

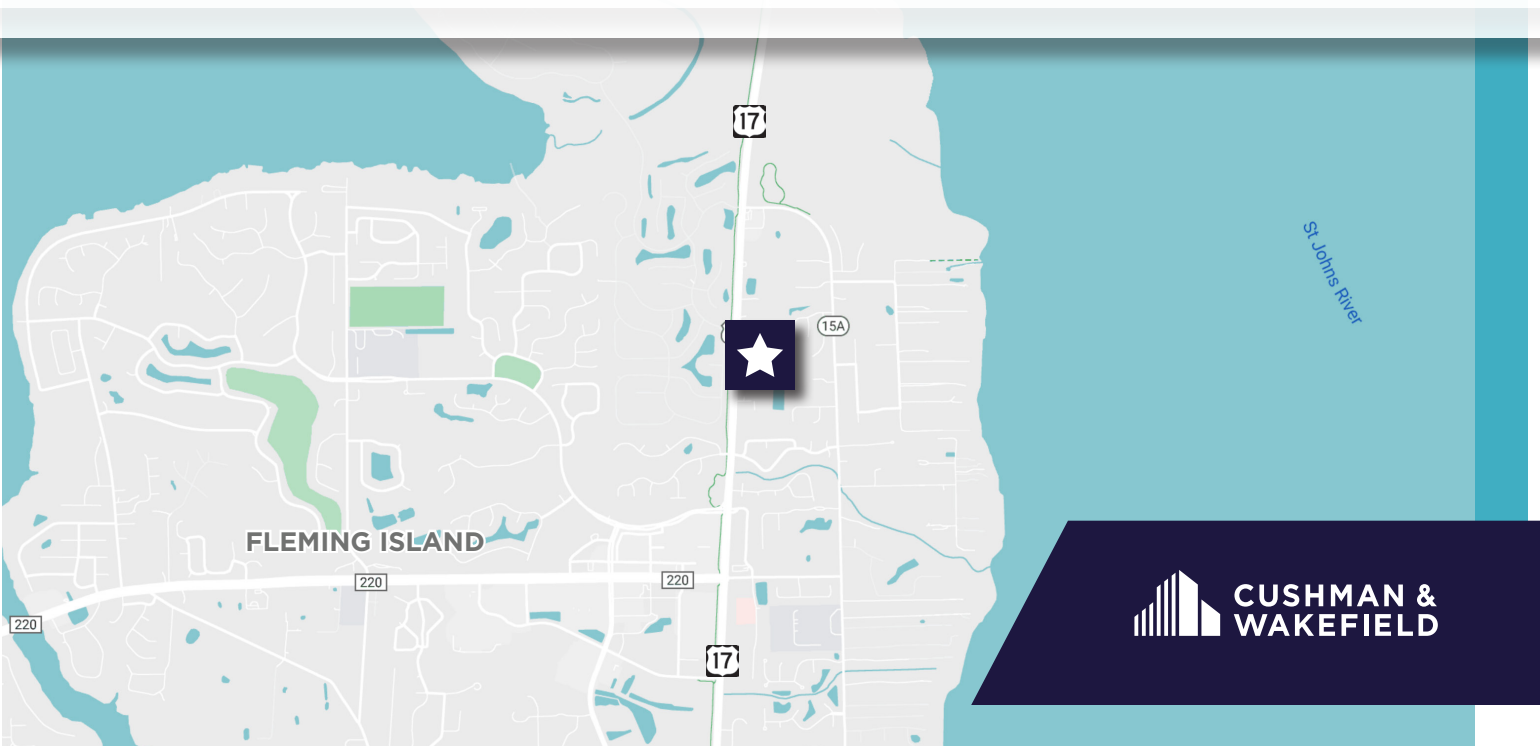


UP TO ±9,086 RSF AVAILABLE FOR SUBLEASE

4565 HWY 17

FLEMING ISLAND, FL 32003

PRICING - CONTACT FOR MORE INFORMATION



**CUSHMAN &
WAKEFIELD**

MOVE-IN READY

URGENT CARE SUITE

AVAILABLE FOR SUBLEASE

Property Highlights

- 8 Exam Rooms - One Featuring a Decontamination Shower
- Lab with Sink, plus an Adjacent Restroom with Pass-Through
- Centralized Nursing Station
- LED In-Direct Lighting & Premium LVT Throughout
- Ample Storage Space
- FF&E In-Place Can be Available
- Fully ADA Compliant
- Co-Tenants Include: Southeastern Orthopedics, Akumin, DaVita, First Coast Heart, Family Care Partners & Brooks Rehab

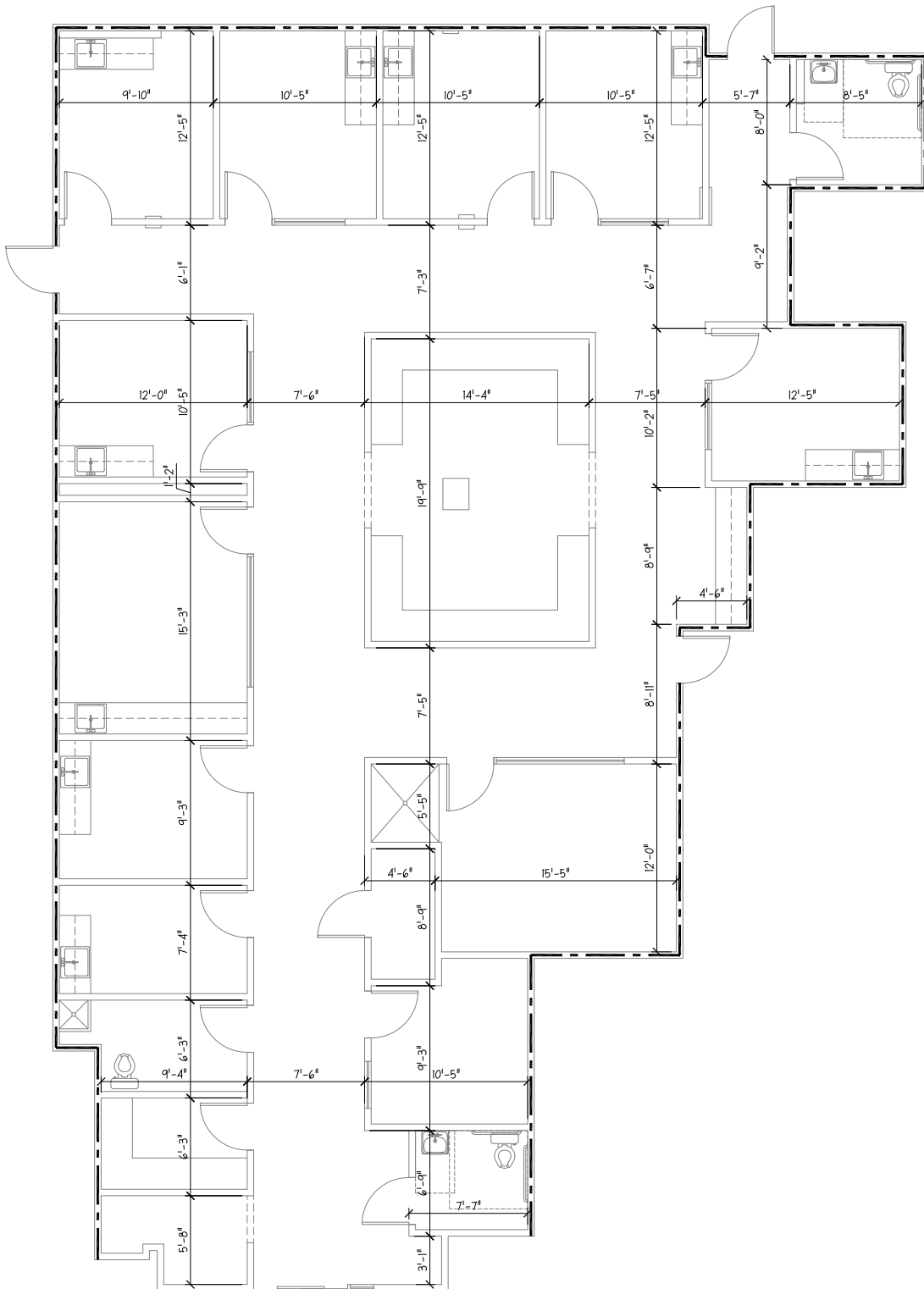


FLOOR PLAN | SUITE 100

3,312 RSF

GROUND FLOOR | URGENT CARE SPACE

EXPIRATION TERM: 6/30/2031



FOR SUBLEASE

4565 HWY 17

FLEMING ISLAND, FL 32003

For more information, please contact:

DAVID J. HILLEGAS
+1 904 380 8343
david.hillegas@cushwake.com

FRANCESCA M. NEUMAN
+1 904 380 4111
francesca.neuman@cushwake.com



121 N Hogan St. | Suite 900
Jacksonville, FL 32202
main +1 904 731 9500
cushmanwakefield.com

©2024 Cushman & Wakefield. All rights reserved. The information contained in this communication is strictly confidential. This information has been obtained from sources believed to be reliable but has not been verified. NO WARRANTY OR REPRESENTATION, EXPRESS OR IMPLIED, IS MADE AS TO THE CONDITION OF THE PROPERTY (OR PROPERTIES) REFERENCED HEREIN OR AS TO THE ACCURACY OR COMPLETENESS OF THE INFORMATION CONTAINED HEREIN, AND SAME IS SUBMITTED SUBJECT TO ERRORS, OMISSIONS, CHANGE OF PRICE, RENTAL OR OTHER CONDITIONS, WITHDRAWAL WITHOUT NOTICE, AND TO ANY SPECIAL LISTING CONDITIONS IMPOSED BY THE PROPERTY OWNER(S). ANY PROJECTIONS, OPINIONS OR ESTIMATES ARE SUBJECT TO UNCERTAINTY AND DO NOT SIGNIFY CURRENT OR FUTURE PROPERTY PERFORMANCE.