

PACKARD LOFTS • TWO BLOCKS FROM LA LIVE

Move-In Ready Retail Space For Lease



1000 S. Hope Street, Los Angeles, CA 90015



JUSTIN WEISS · 310.887.3450 · Justin.Weiss@kwprealestate.com · DRE #01920886

LEE SHAPIRO · 310.887.6226 · Lee.Shapiro@kwprealestate.com · DRE #00961769

Move-In Ready Retail Space For Lease

1000 S. Hope Street, Los Angeles, CA 90015

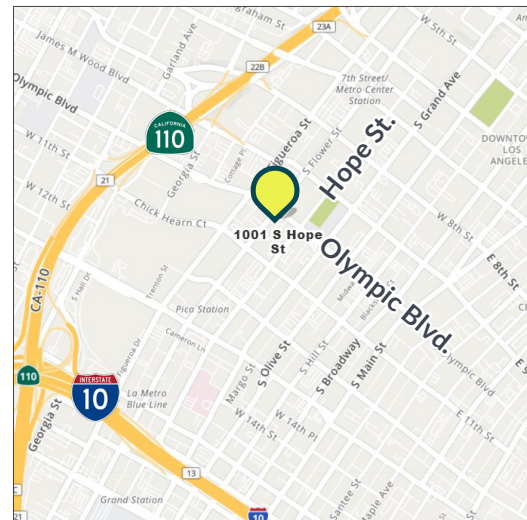
AVAILABLE

- Retail 1: ±5,500
- Retail 2: ±1,000
- Rent: \$3.50 PSF/Mo., NNN
- NNN: ±\$1.00 PSF/Month
- Parking: 40 at-grade parking spaces

PROPERTY HIGHLIGHTS

- Situated in the heart of South Park's Olympic Blvd., corridor surrounded by 5,000 residential units and 2,000 hotel keys within blocks of property
- Permitted for a hybrid medical space
- 40 at-grade parking spaces with direct access to the premises
- Convenient access to the 10 and 110 Freeways
- Two blocks from LA LIVE, Staples Center and the Convention Center
- High vehicular and pedestrian traffic counts along Olympic Blvd.
- Across the street from FIDM (Fashion Institute of Design & Merchandising)

** Prospective tenants are hereby advised that all uses are subject to City approval*



TRADE AREA

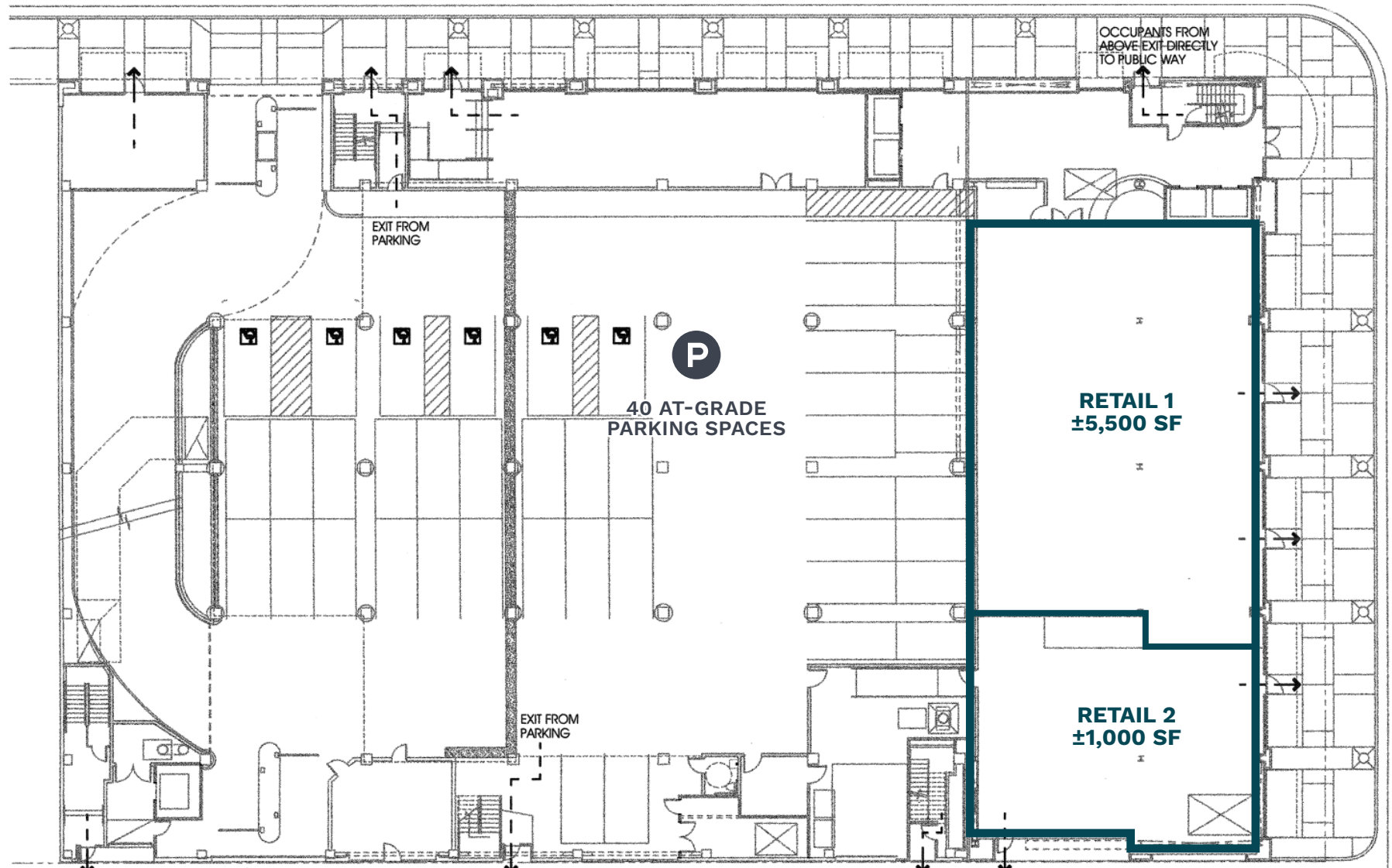


Move-In Ready Retail Space For Lease



1000 S. Hope Street, Los Angeles, CA 90015

Hope St.



Olympic Blvd.



OCCUPANTS FROM ABOVE EXIT DIRECTLY TO PUBLIC WAY

ALLEY

OCCUPANTS FROM ABOVE EXIT DIRECTLY TO PUBLIC WAY

Move-In Ready Retail Space For Lease

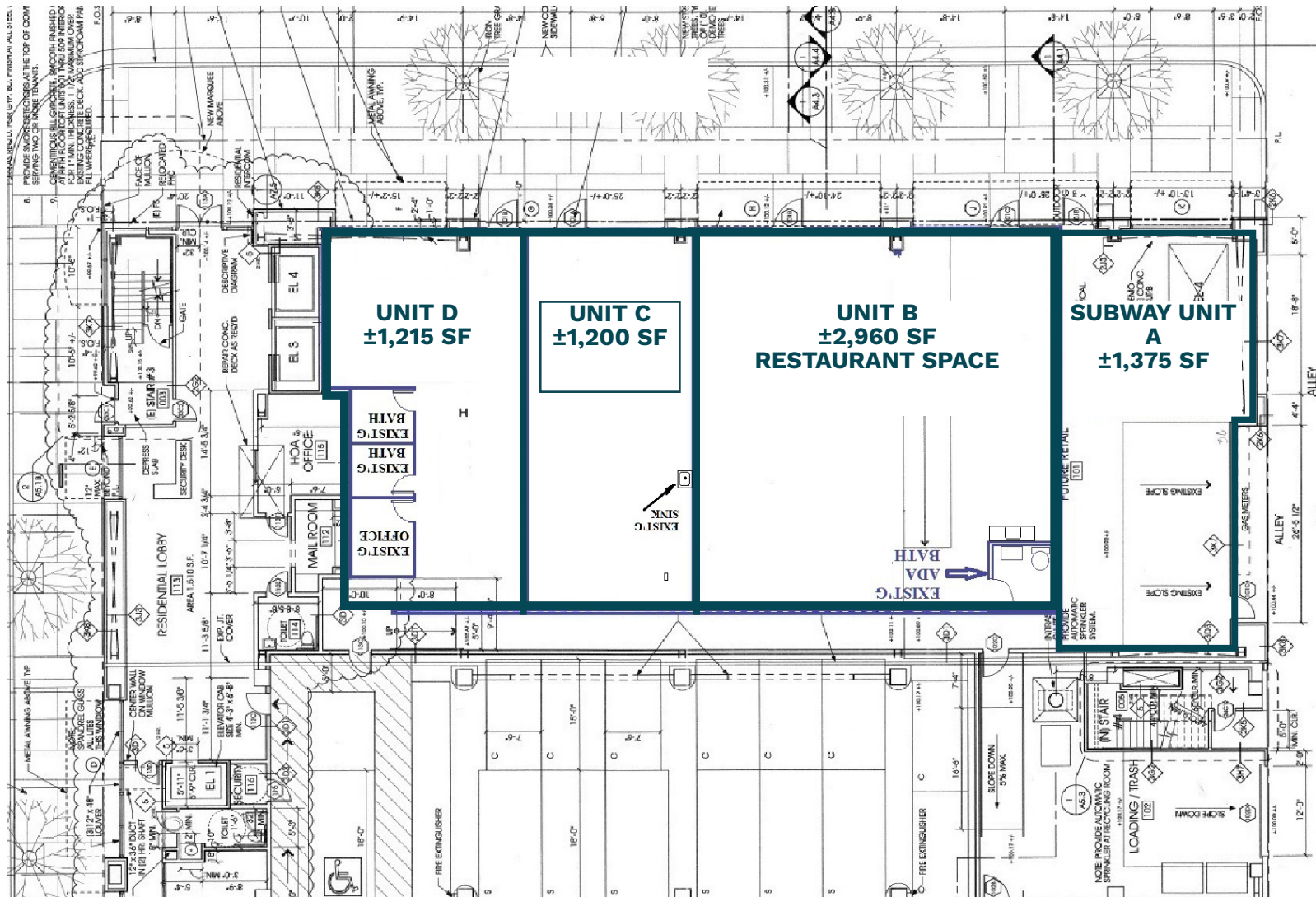


1000 S. Hope Street, Los Angeles, CA 90015

PROPOSED DEMISING PLAN

Olympic Blvd.

Hope St.



PACKARD LOFTS • TWO BLOCKS FROM LA LIVE

Move-In Ready Retail Space For Lease



1000 S. Hope Street, Los Angeles, CA 90015



PACKARD LOFTS • TWO BLOCKS FROM LA LIVE

Move-In Ready Retail Space For Lease



1000 S. Hope Street, Los Angeles, CA 90015

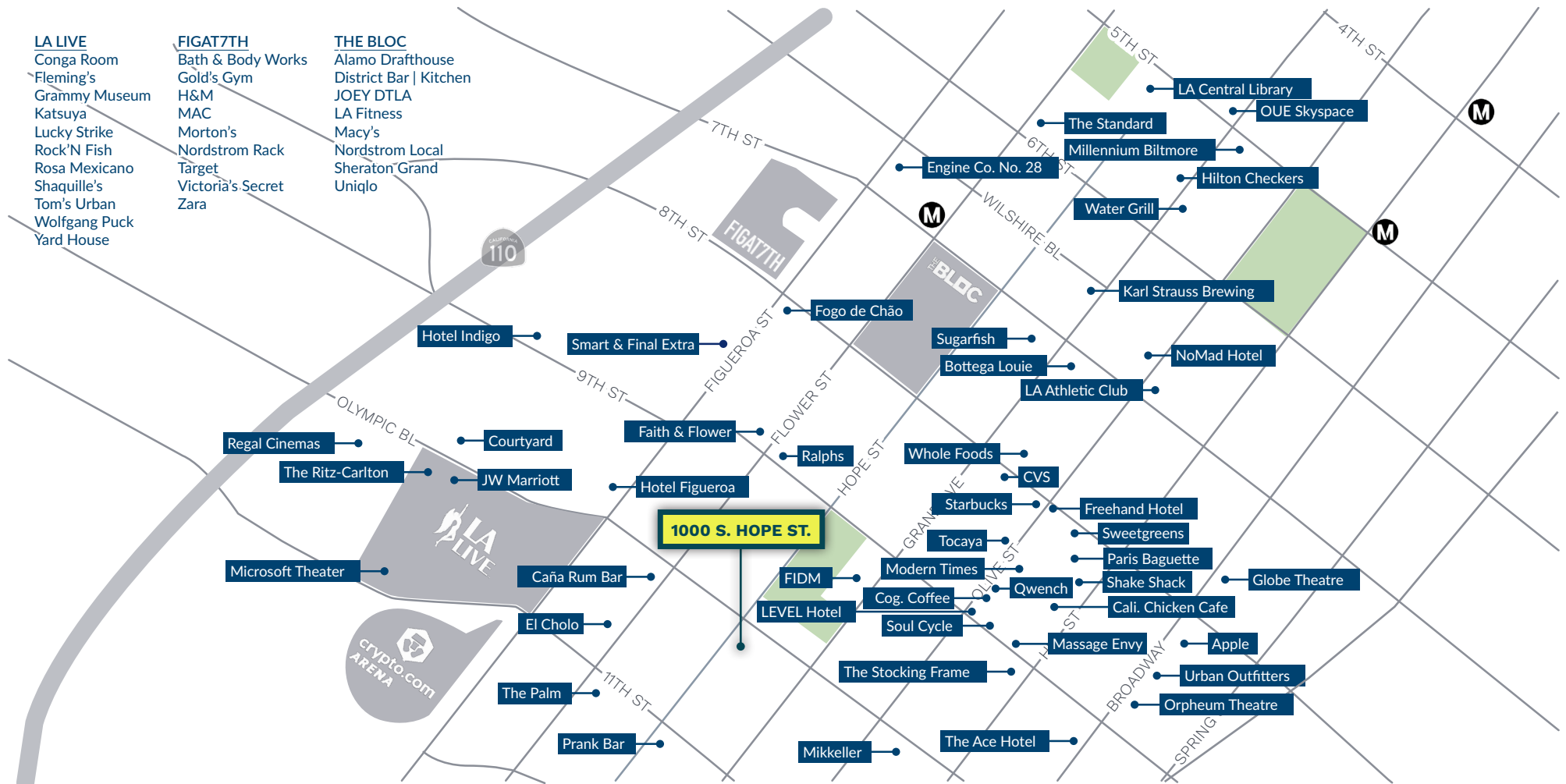


Move-In Ready Retail Space For Lease



1000 S. Hope Street, Los Angeles, CA 90015

TRADE AREA



Move-In Ready Retail Space For Lease

1000 S. Hope Street, Los Angeles, CA 90015

DTLA DEMOGRAPHICS

Live 80,000+ RESIDENTS

\$93,000

AVERAGE HHI

90%

RESIDENTIAL OCCUPANCY

26%

RESIDENTIAL INVENTORY GROWTH SINCE 2010

41%

POPULATION GROWTH 2010-2022

61%

25-54 YEARS OLD

67%

LOVE DTLA



67% POST
SECONDARY EDUCATION



46% WALK, BIKE,
OR TAKE TRANSIT TO
WORK

Work 288,000+ JOBS

\$95,000

AVERAGE HHI

79%

EXPECT TO BE IN THE OFFICE AT LEAST HALF THE TIME

19%

JOB GROWTH IN "KNOWLEDGE INDUSTRIES"

19%

OF CITYWIDE JOBS

61%

30-54 YEARS OLD



57% POST
SECONDARY EDUCATION



57% COMMUTE
LESS THAN 7 MILES
FROM THEIR HOME



Visit 17 MILLION VISITORS IN 2023

\$4.5 Billion

SPENT YEARLY

58%

HAVE VISITED GRAND CENTRAL MARKET

58%

HAVE VISITED ARTS DISTRICT

55%

HAVE VISITED LITTLE TOKYO

745

RETAIL BUSINESSES
PER SQUARE MILE



171 FOOD/BEVERAGE
BUSINESSES PER
SQUARE MILE



93 WALK SCORE



Source: DCBID Demographic Survey 2024



REAL ESTATE

JUSTIN WEISS

310-887-3450

Justin.Weiss@kwprealestate.com

DRE #01920886

LEE SHAPIRO

310-887-6226

Lee.Shapiro@kwprealestate.com

DRE #00961769

KWP Real Estate | 151 S. El Camino Drive, Beverly Hills, CA 90212 | 310-887-6400 | kwprealestate.com

KWP Real Estate (Responsible Broker Identity, DRE #00659610) makes no warranty or representation as to the accuracy of the information contained herein. Terms of sale or lease and availability of the property are subject to change or withdrawal without notice.