



VELOCITY VENTURES

1 BELMONT AVENUE | SUITE 520 | BALA CYNWYD, PA

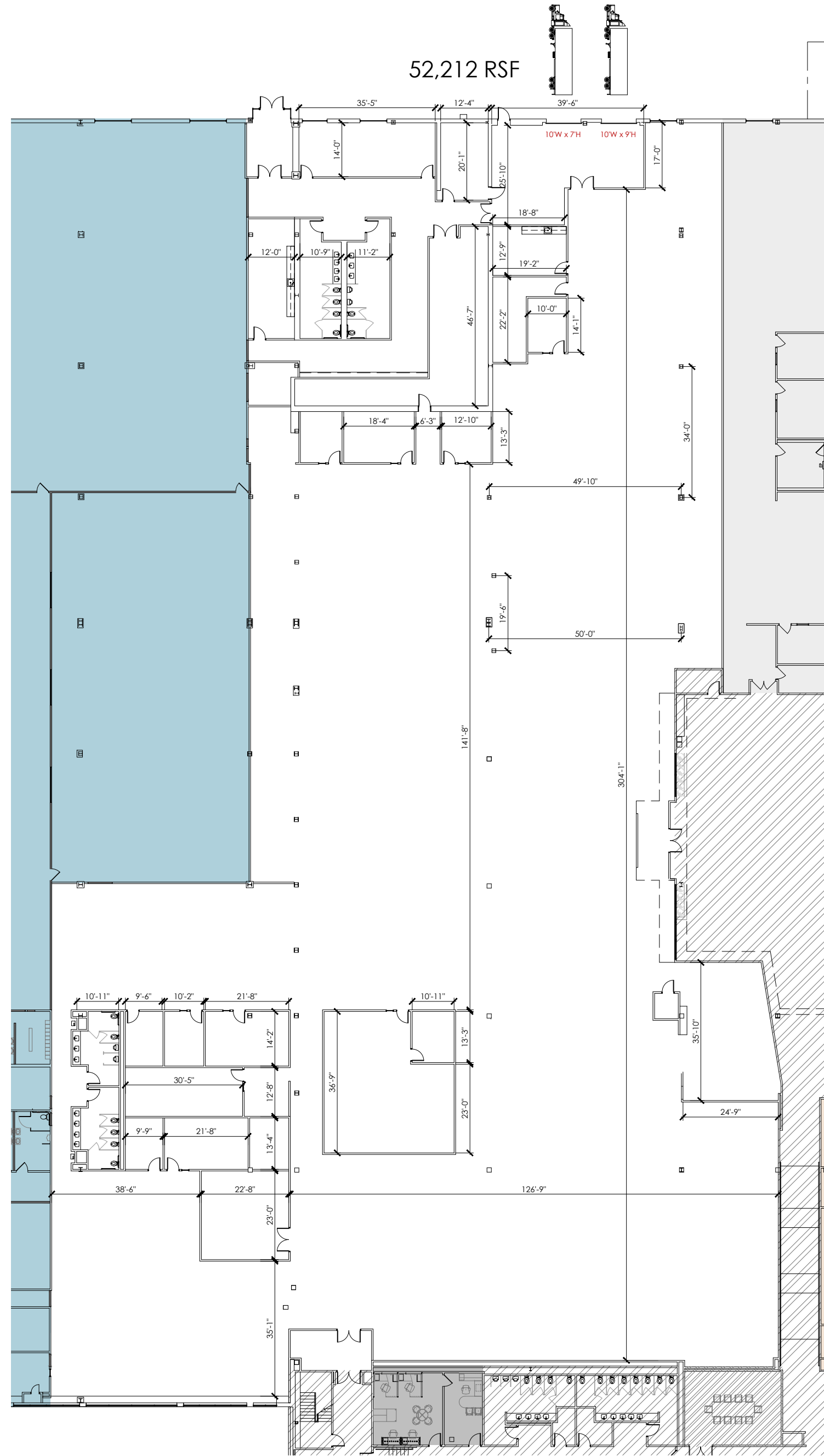
CLIENT

Available 340A

PROJECT ADDRESS

330 S Warminster Rd.
Hatboro | PA

This drawing is intended for marketing purposes only, is not intended to be complete in all respects, and is provided solely as a convenience for the recipient. Any and all information contained herein should be independently verified by any recipient of this drawing wishing to rely on same. Neither Velocity Venture Partners, LLC ("VVP"), nor its owners, principals, officers, members, employees, representatives or agents (collectively, the "VVP Parties") make any claim as to the truth, completeness, and/or accuracy of the contents herein and all VVP Parties hereby expressly disclaim any and all such representations and warranties, both express and implied. The recipient of this drawing waives any and all claims against the VVP Parties arising from and/or relating to this drawing. Any and all intellectual property rights pertaining to this drawing are the sole and exclusive property of VVP. This drawing may not be disclosed, published, sold, and/or distributed without the prior written consent of VVP.

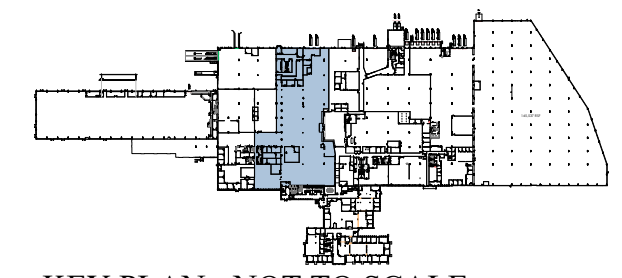


1 PROPOSED FLOOR PLAN
SK SCALE: NTS

SUITE 340A
PROPOSED FLOOR PLAN AREA

REVISIONS

January 20, 2026



KEY PLAN - NOT TO SCALE

MKT-1