

# PENDER VILLAGE CENTER

3903 Fair Ridge Dr  
Fairfax, VA 22033

## Office For Lease

1,032 - 1,574 SF



Leasing Information:  
703.522.4600

**Chris Dyson**     **Jack Redmond**  
703.284.3633     703.284.5880  
cdyson@lpc.com     jredmond@lpc.com

# Lincoln

1530 Wilson Boulevard Suite 200

Arlington, VA 22209

[www.lpc.com](http://www.lpc.com)

# PENDER VILLAGE CENTER

3903 Fair Ridge Dr | Fairfax, VA 22033

Office For Lease

1,032 - 1,574 SF



## Property Highlights

- 140,031 SF Mixed-use center located off Route 50
- Centrally located with easy access to Fairfax County Parkway and I-66
- Exterior signage facing Route 50 available for all tenants
- Recently renovated main entrance, lobby and common areas
- Multiple suites available for both Medical & Office uses
- Instant access to Harris Teeter, UPS Store & Corner Bakery Café, 4-minute drive to Fair Oaks Mall and 8-minute drive to Fair Oaks Hospital
- 4.57/1,000 SF parking ratio

## Availabilities

Availabilities	SF	Lease Rate	Date Available
Suite 210	1,308 SF	Negotiable	Immediately
Suite 211	1,235 SF	Negotiable	Immediately
Suite 217	1,574 SF	Negotiable	Immediately
Suite 221	1,032 SF	Negotiable	Immediately



Chris Dyson

Jack Redmond

703.284.3633

703.284.5880

cdyson@lpc.com

jredmond@lpc.com

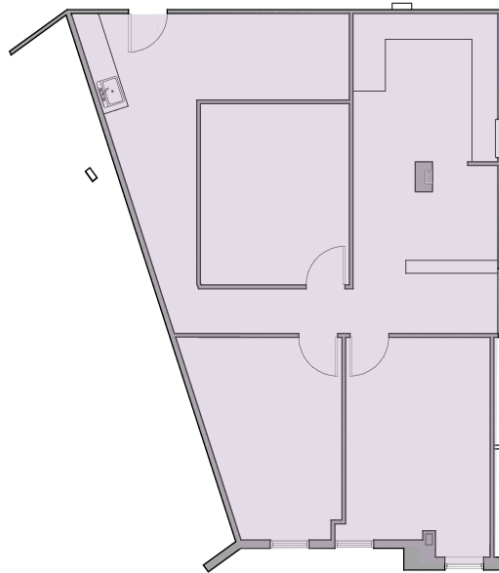
Lincoln

# PENDER VILLAGE CENTER

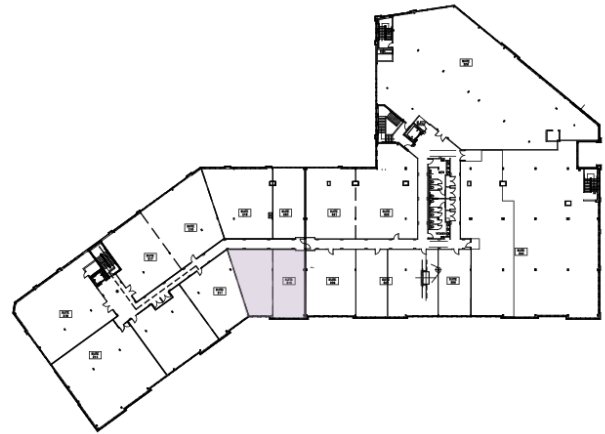
3903 Fair Ridge Dr | Fairfax, VA 22033

Suite 210

1,308 SF



Suite 210



Suite	Size	Description
■ Suite 210	1,308 SF	Office Space Available Immediately

**Chris Dyson**

703.284.3633  
cdyson@lpc.com

**Jack Redmond**

703.284.5880  
jredmond@lpc.com

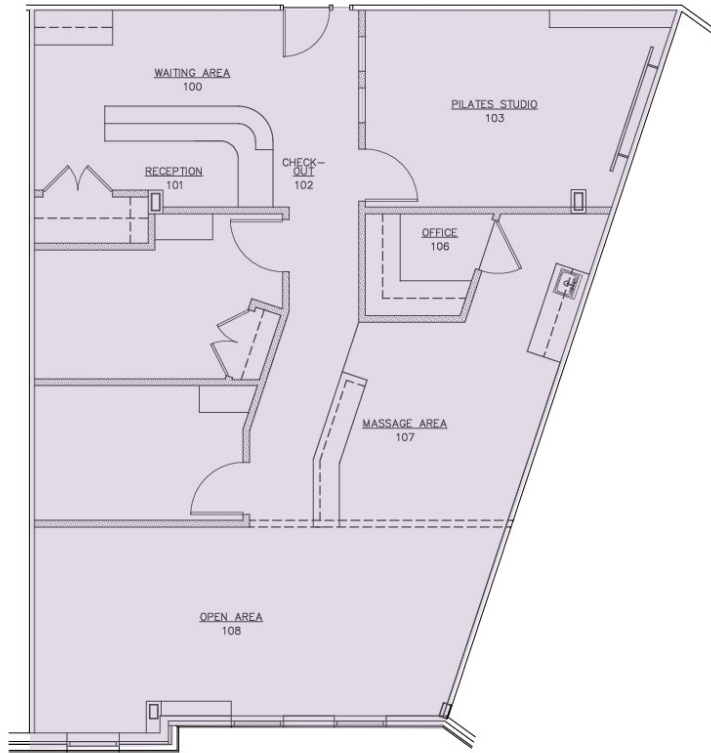
**Lincoln**

# PENDER VILLAGE CENTER

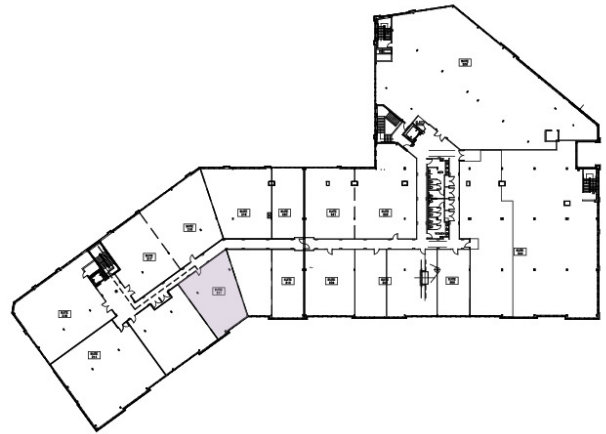
3903 Fair Ridge Dr | Fairfax, VA 22033

Suite 211

1,235 SF



Suite 211



Suite	Size	Description
■ Suite 211	1,235 SF	Available Immediately

Chris Dyson

703.284.3633  
cdyson@lpc.com

Jack Redmond

703.284.5880  
jredmond@lpc.com

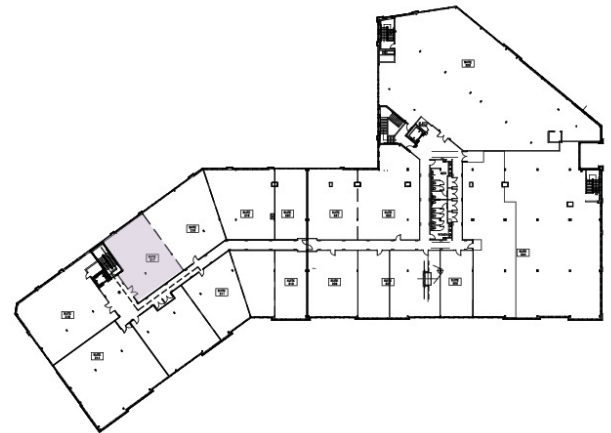
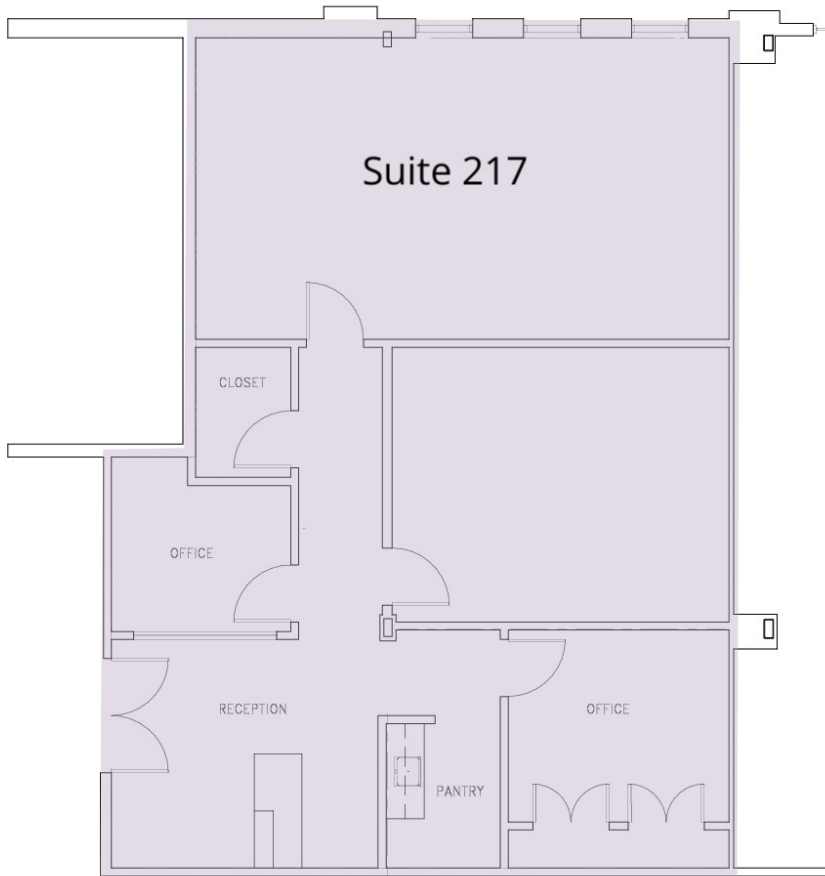
Lincoln

# PENDER VILLAGE CENTER

3903 Fair Ridge Dr | Fairfax, VA 22033

Suite 217

1,574 SF



Suite	Size	Description
■ Suite 217	1,574 SF	Ideal space for Medical tenants, directly off elevator lobby. Available immediately.

**Chris Dyson**

703.284.3633  
cdyson@lpc.com

**Jack Redmond**

703.284.5880  
jredmond@lpc.com

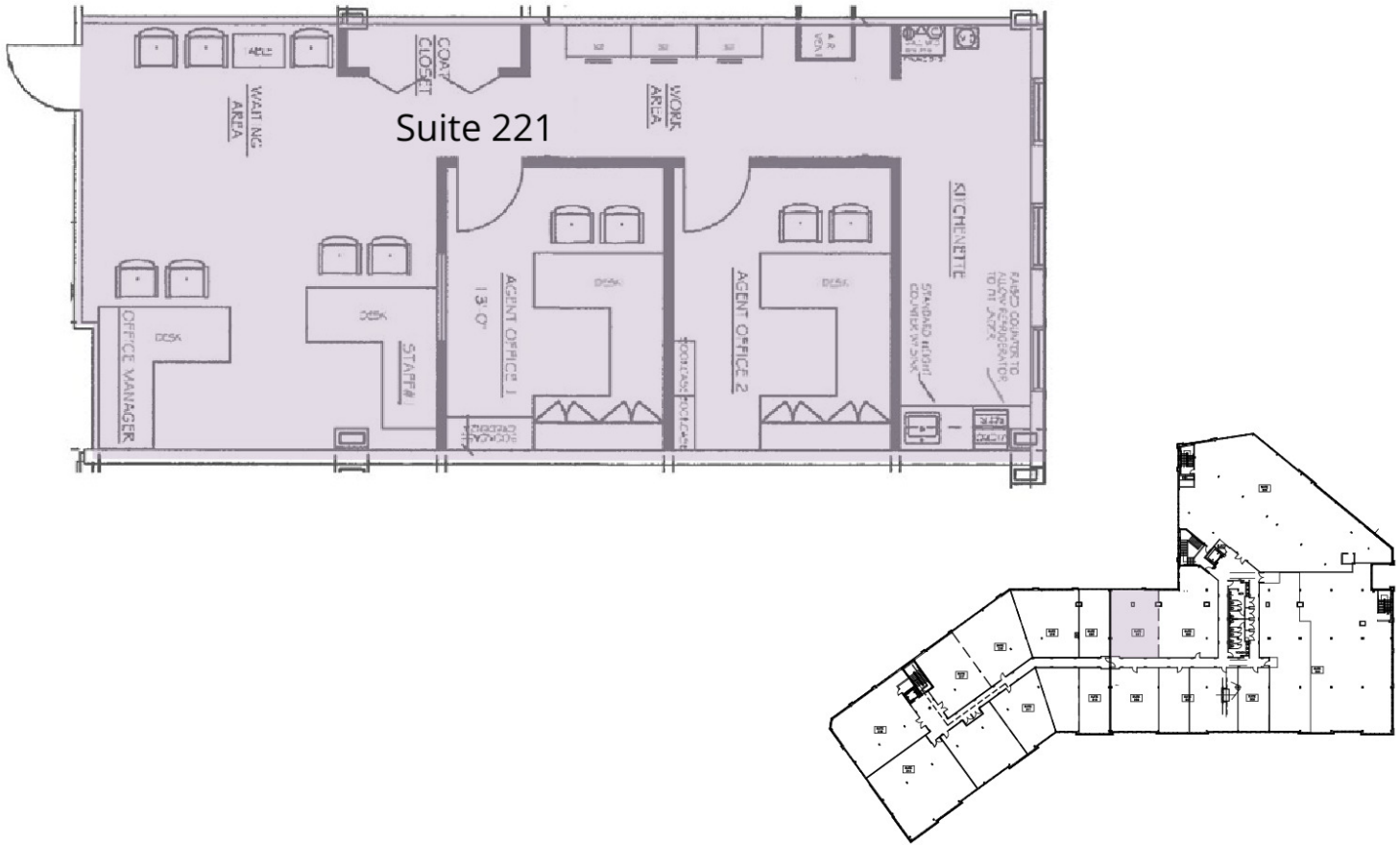
**Lincoln**

# PENDER VILLAGE CENTER

3903 Fair Ridge Dr | Fairfax, VA 22033

Suite 221

1,032 SF



Suite	Size	Description
■ Suite 221	1,032 SF	Office Space Available Immediately

Chris Dyson

Jack Redmond

703.284.3633

703.284.5880

cdyson@lpc.com

jredmond@lpc.com

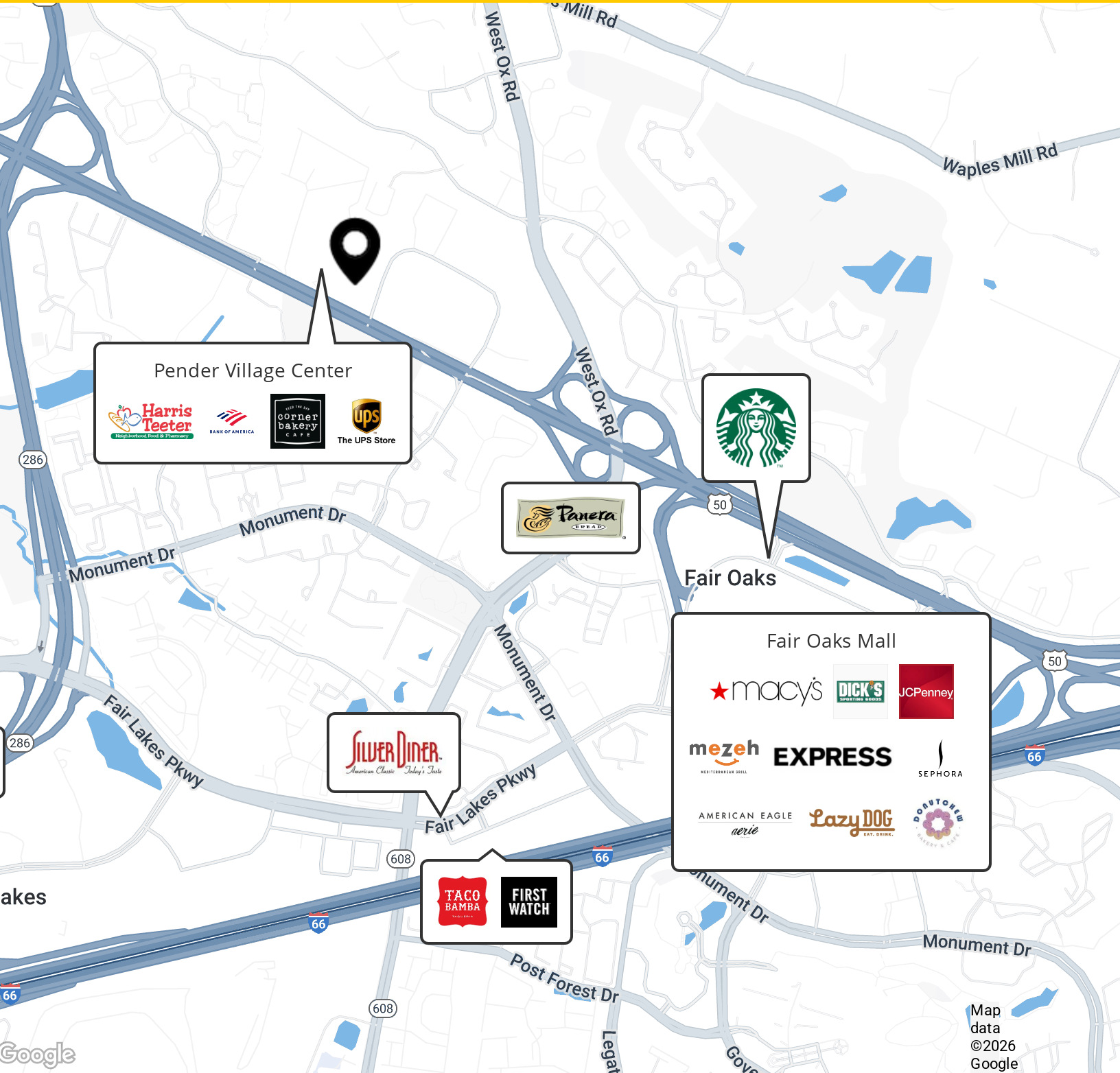
Lincoln

# PENDER VILLAGE CENTER

3903 Fair Ridge Dr | Fairfax, VA 22033

Nearby Amenities

1,032 - 1,574 SF



Chris Dyson

703.284.3633  
cdyson@lpc.com

Jack Redmond

703.284.5880  
jredmond@lpc.com

# Lincoln



# PENDER VILLAGE CENTER

3903 Fair Ridge Dr  
Fairfax, VA 22033

Leasing Information:  
703.522.4600

**Chris Dyson**  
703.284.3633  
cdyson@lpc.com

**Jack Redmond**  
703.284.5880  
jredmond@lpc.com

# Lincoln

1530 Wilson Boulevard Suite 200

Arlington, VA 22209

[www.lpc.com](http://www.lpc.com)