

Goswell Road



Proudly home of...

 **AI/HUB**
LONDON



Rooftop Café

Located on the top floor members will be able to order barista-made coffee on-site



Event Space

Offsites you can have, on-site... host your team meetings and company events



Dog Friendly

We love our furry friends. Well behaved dogs are welcomed across all our locations.



Meeting Spaces

A variety of fully-spec'd meeting rooms and phone booths are available.



Bike Storage

Right next to the entrance, members will be able to securely stow their 2-wheels on-site



Production Room

Studio room designed specifically for recording podcasts and video content.



Wellness Space

A lockable space for spending time alone. Perfect for prayer, meditation or breast feeding



Showers

For those early-risers and gym-goers, we've got you covered in the morning

Map



Techspace Goswell Road

140 Goswell Rd, London EC1V 7DY

- <8 mins walk to Barbican underground (Metropolitan, Circle, Hammersmith & City Lines)
- <10 mins walk to Farringdon underground (Metropolitan, Circle, Hammersmith & City Lines)
- <13 mins walk to Old St underground (Northern Line)
- Mainline links from Farringdon
- Elizabeth Line (East <> West: Reading to Shenfield)
- Thameslink (North <> South: Bedford to Brighton)

Food spots

- 01 Goswell Best Charcoal Grill
- 02 Kennedy's of Goswell Rd
- 03 Chicken Diner
- 04 Greek Grill Point
- 05 Nón Express
- 06 Fresh Fusion Food
- 07 Briyani Guys
- 08 Old St Burrito Cafe
- 09 Pret A Manger
- 10 Pizza Express
- 11 Katsuma premium Japanese
- 12 Banh Mi Aha!
- 13 King Of Wings
- 14 The Clerkenwell Kitchen
- 15 Fare
- 16 Granger & Co

After work

- 01 Slaughtered Lamb
- 02 1920 Bar
- 03 Clerkenwell & Social
- 04 Sports Bar & Grill
- 05 Simmons Bar
- 06 Be At One Bar
- 07 The Piano Works
- 08 Martini Bar
- 09 Wood Street Bar
- 10 Sports Bar & Grill
- 11 The Fence
- 12 The Masque Haunt
- 13 BrewDog Bar
- 14 The Corner Bar
- 15 Piano Smithfield
- 16 The Sekforde





Top floor members' lounge



THE KINFOLK HOME
THE KINFOLK HOME
INTERIORS OF SLOW LIVING
NATHAN WILLIAMS



In-office breakout interiors



6-8 person bookable Meeting Room



12-14 person Premium Boardroom



Top floor roof terrace

Specifications



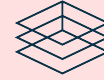
Brand new offices in London's most exciting creative location, Farringdon



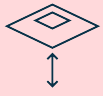
Designed by Formafantasma. Developed by General Projects



BREEAM 'Excellent'



Raised access flooring 150mm



3-3.3m floor to ceiling height



Crafted from whitewashed cross laminated timber. Sourced from sustainable forests



Top floor café with breakout and outdoor terrace



3x new passenger lifts and wheelchair compliant



Exposed loft services with hybrid raft ceilings



New openable windows throughout for natural ventilation.



Cycle parking, showers, and lockers for up to 110 users

Green thinking

Thoughtfully and meticulously designed with a focus on environmental impact and the well-being of its occupants.

- BREEAM* 'Excellent', Wiredscore Platinum, EPC A
- 2,560 tonnes of waste diverted from landfills
- High quality handmade bricks from recycled waste
- Terrace space totalling 2275 sq ft
- Green planting improves local ecology and habitat
- New mechanical, electrical and plumbing throughout
- CAT A heating and cooling, G and LG A/C by variable refrigerant flow (VRF) fan coil system
- CAM-C underfloor heating and cooling on upper levels allows clean soffits and maximum flexibility
- High performance glazing to reduce cooling energy

*BREEAM is a leading sustainability assessment method for buildings, evaluating their environmental performance and promoting eco-friendly design and construction.



Elevation

Café and terrace	4
Private Offices and terrace	3
Private Offices	2
Private Offices, Event Space & terrace	1
Reception	G
Private Offices	LG

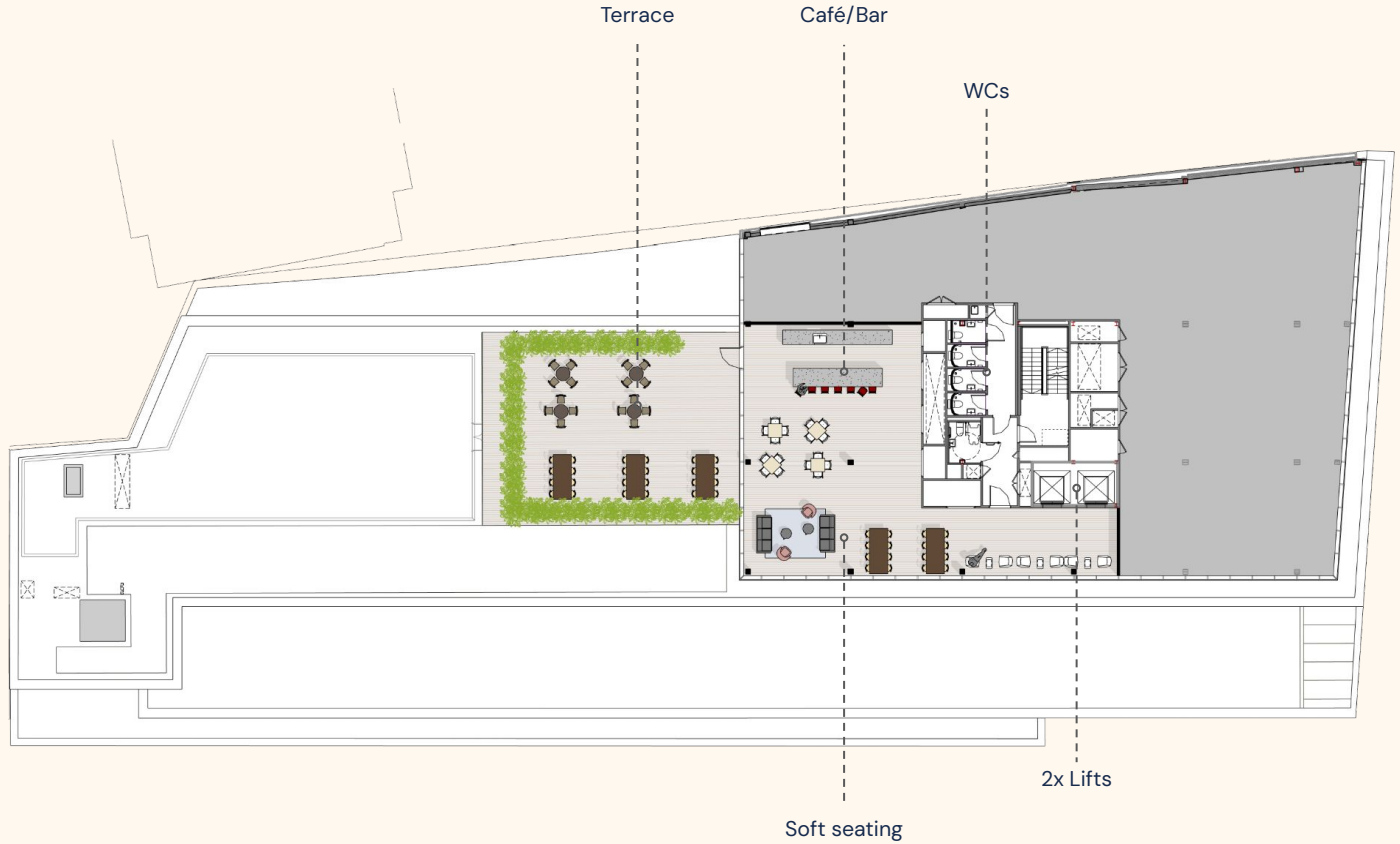


Floor 4

Shared Floor

Amenities

- 1x Café/ Bar
- 1x Breakout
- 2x Lifts
- 5x WCs

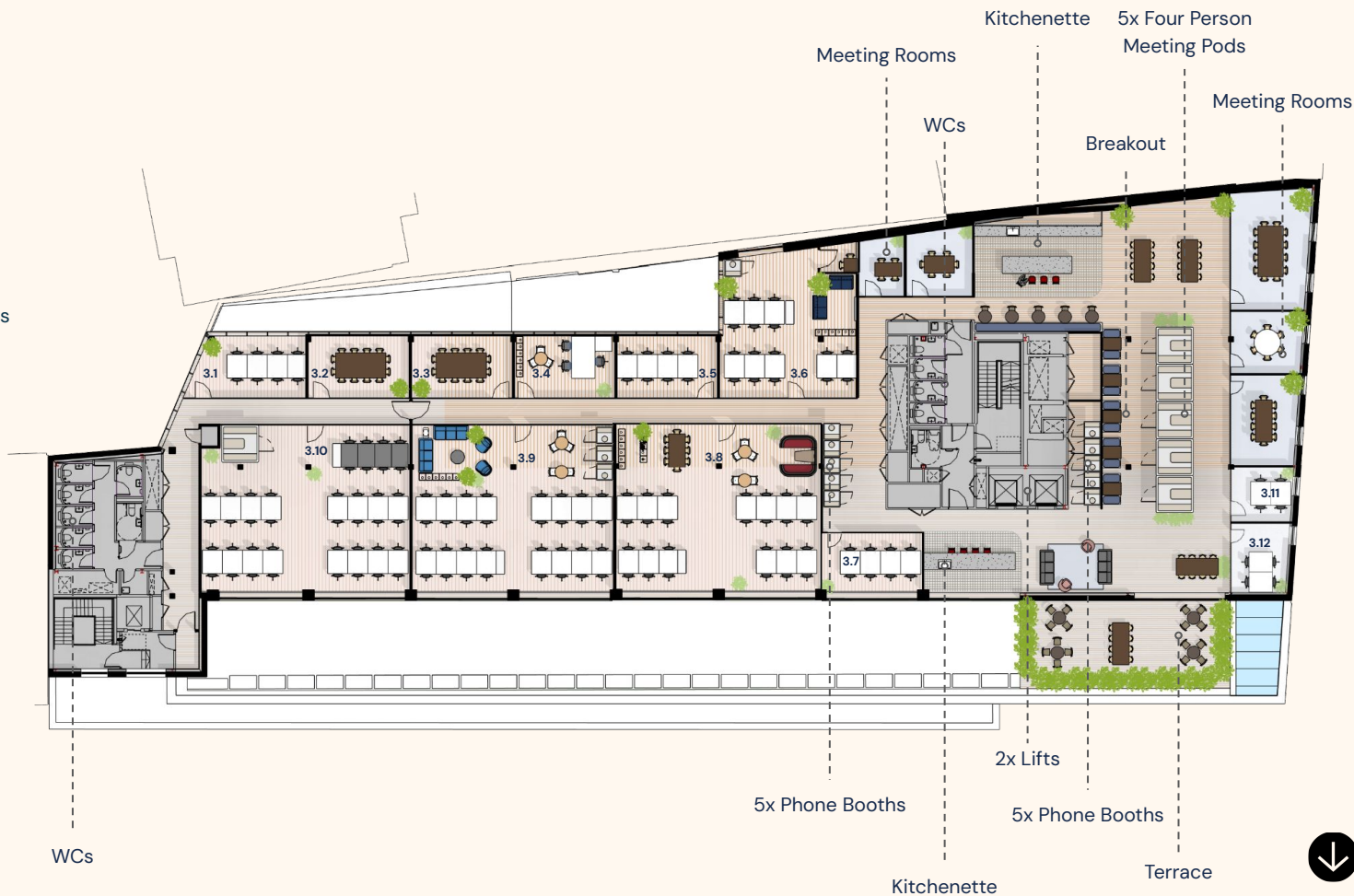


Floor 3

Shared Floor

Amenities

- 7x Meeting rooms
- 5x Four person meeting pods
- 10x Phone booths
- 2x Kitchenette
- 1x Breakout
- 2x Lifts
- 12x WCs
- 1x Rooftop café



Floor 2

Shared Floor

Amenities

- 12x Meeting rooms
- 6x Phone booths
- 2x Kitchenette
- 1x Breakout
- 2x Lifts
- 12x WCs
- 1x Rooftop café



Floor 1

Shared Floor

Amenities

- 11x Meeting rooms
- 10x Phone booths
- 3x Kitchenette
- 1x Terrace
- 1x Breakout
- 1x Event Space
- 2x Lifts
- 12x WCs
- 1x Rooftop café



Floor LG

Shared Floor

Amenities

- 1x Kitchenette
- 1x Private terrace
- 1x Breakout
- 1x Event Space
- 2x Lifts
- 6x WCs
- 1x Rooftop café



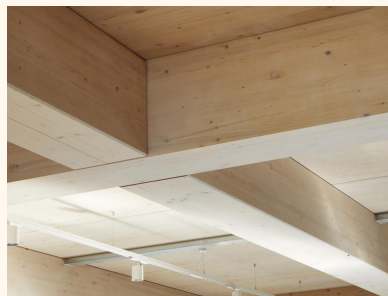
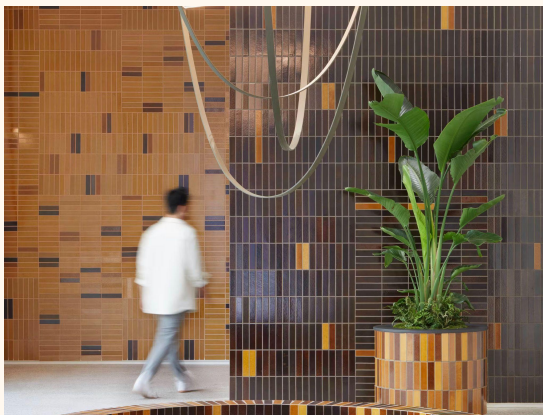
Premium workspace

Easy on the eye, with a functional design

Bask in abundant natural light throughout the building, complemented by premium concrete and wood textures that create a sophisticated yet industrial feel.

Choose from Private Offices accommodating 4 to 80 desks, with the flexibility to customise each unit to your preferences.

Enjoy access to fully-equipped meeting rooms, kitchens, phone booths, and terraces, ensuring your team has everything they need to work at their best.



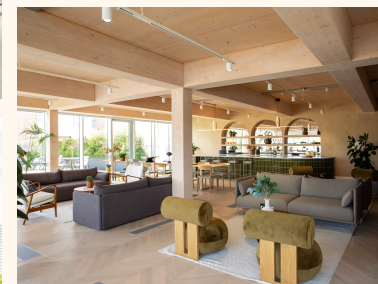
Members bar & café

A strikingly beautiful top floor café and bar with outdoor terrace.

With views over Clerkenwell and Farringdon our top floor members' lounge doubles as your morning coffee stop, and your evening tippie.

Want a change of scenery during the day? Work from the lounge or sunbathe on the rooftop.

Just remember to pack your sunnies on your way to work.





Production room

Venues to impress



Events at The Gallery (80-150 pax)

London AI Hub

Techspace is proudly Home of The London AI Hub.

Working in tandem with Merantix Group, Husayn Kassai (founder of Onfido), and Tech Nation (part of Founders Forum Group), Techspace is now home to the UK's first physical nucleus for AI innovation, designed to bring together the brightest minds in AI.

The UK's premier neutral and multi-stakeholder hub for AI-first teams, who lead and shape AI adoption across industries.

--

AI-native companies are welcome to apply for membership of AI Hub.

→ Fixed Desks and Private Offices available.



 AI/HUB
LONDON

Spoilt for choice

Nestled between the West End, the City, King's Cross, and Old Street, Goswell Road stands out as one of London's most vibrant and creative neighborhoods. With its unparalleled connectivity via the Elizabeth line, Thameslink, and multiple tube lines, it offers the perfect blend of urban excitement and green tranquility.

Explore a diverse array of independent restaurants, boutiques, and the famous Exmouth Market. Discover new favorite spots to eat, shop, and unwind in this bustling area that combines a lively urban environment with a friendly, village-like feel.

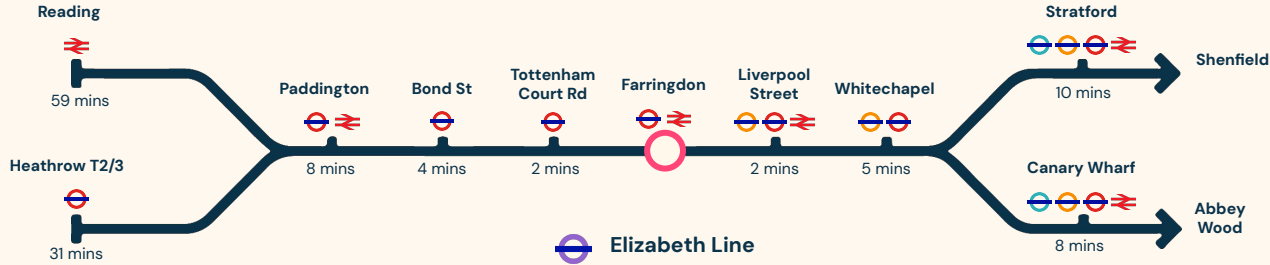
Uncover the hidden gems of Clerkenwell and Farringdon and be part of one of London's most thriving communities.



Transport links

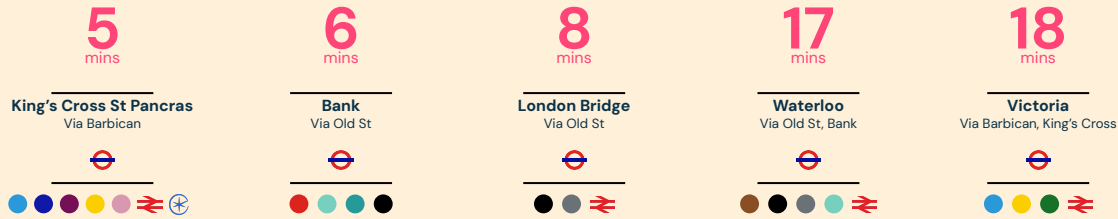
Travel times from Farringdon 

9 minute walk - National Rail / Elizabeth line / Underground



Travel times via Barbican or Old Street.

Barbican being a 6 minutes walk, and Old Street a 10 minute walk.



Where the status quo don't go

Our members are forward thinking, innovative teams with technology at their core.

As a result, we have a rich community where members can build connections, join educational talks and rub shoulders with peers who've walked in their shoes.

The logo for PEO, featuring the letters 'PEO' in a bold, sans-serif font.The logo for AGICAP, featuring a circular icon with a stylized globe or wave pattern above the text 'AGICAP'.The logo for PLAID, featuring a grid of small squares forming a larger square shape above the text 'PLAID'.The logo for TESLA, featuring the Tesla logo symbol (a stylized 'T' with a lightning bolt) followed by the word 'TESLA'.The logo for zoominfo, featuring a stylized 'Z' icon followed by the text 'zoominfo'.The logo for databricks, featuring a stack of three horizontal bars above the text 'databricks'.The logo for TOKEN, featuring the word 'TOKEN' in a bold, sans-serif font.The logo for zoa, featuring the word 'zoa' in a bold, lowercase, sans-serif font.The logo for WORLD COIN, featuring a stylized flower or star icon followed by the text 'WORLD COIN'.The logo for LILT, featuring a square icon with a stylized 'L' inside followed by the text 'LILT'.The logo for ANTLER, featuring a square icon with a stylized 'A' inside followed by the text 'ANTLER'.The logo for Unity, featuring a 3D cube icon followed by the text 'Unity'.The logo for MR YUM, featuring the text 'MR YUM' in a stylized, bold font.The logo for Lendico, featuring a diamond-shaped icon with a stylized 'L' inside followed by the text 'Lendico'.The logo for Dext, featuring the word 'Dext' in a bold, sans-serif font.The logo for ama, featuring a grid of small squares followed by the text 'ama'.

Some of our alumni

The logo for GoStudent, featuring a stylized 'G' icon followed by the text 'GoStudent'.The logo for Freetrade, featuring a stylized 'F' icon followed by the text 'Freetrade'.The logo for silverfin, featuring a stylized 'S' icon followed by the text 'silverfin'.The logo for samsara, featuring a circular icon with a stylized 'S' inside followed by the text 'samsara'.

A community where the status quo don't go

Since 2012, we've made it our business to know tech-driven businesses. And it's our tech-only membership that separates us from the rest.

- Build valuable connections with members across Europe who've been where you are now, and walked in your shoes
- Leadership courses and programmes to inspire your rising stars and spark passion in your teams
- Rub shoulders with fellow change-makers at our events, breakfasts, socials and dinners



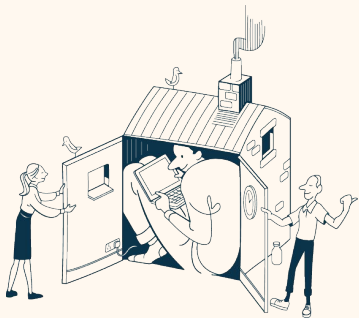
Community Partners:



Space that adapts to your needs

You need a flexible offering that adapts to your needs, not the other way around.

- Memberships designed to adapt to your future needs
- Clever workplace insights and design services to help you get the most from your space
- Bookable spaces for away days and investor meets or bookable hotdesks for when you're on the move



Supported by:

BUREAU

MODUS

mute_labs

Everything you need and nothing you don't

Working hard needn't be hard work. While you focus on the things that matter most, we'll take care of the rest.

- Ultra fast Wi-Fi, meeting room AV, configurable A/C. We've got all the basics taken care of
- Generous desks and shared areas that give you room to think and space to breathe
- Get your kicks without leaving the building with unlimited fresh, barista coffee



Interested? Get in touch to speak to our team about pricing and availability.

enquiries@techspace.co

+44 (0)20 3326 7249



thank you