



STONE INDUSTRIAL PARK

STONE RD

NORTH



SOUTH

FOR LEASE – STONE INDUSTRIAL PARK

6230-6232 Stone Rd, Port Richey, FL 34668

Small Bay Warehouse Space! | 1,200 – 4,800 SF Units | Available Now!

Alec Seow
Associate
865.863.0399
Alec@LoberRealEstate.com

Robbie Lober, SIOR
Managing Member
727.999.1806
Robbie@LoberRealEstate.com

Jason McCormick
Senior Associate
561.613.5293
Jason@LoberRealEstate.com



Property Overview

Google Maps Link: [Click Link Here!](#)

Address: 6230-6232 Stone Rd, Port Richey, FL 34668

Available Sizes: 1,200 SF – Available Now!
2,400 SF – Available Now!
4,800 SF – Available Now!

Office Space: All units come with one rollup door, AC'd office space, and a private restroom

Loading: Oversized grade level roll up doors (12'x14') for each unit

Power: 120 amps, 240 volts, single phase (can be upgraded as part of a deal)

Clear Heights: 16 - 20 ft

Zoning: "I-1" – Light Industrial

County / City: Pasco / Port Richey

Outdoor Storage: Approximately 0.20 acres of outdoor storage available!

Contact us below for rates and more info.
Same day showings available!

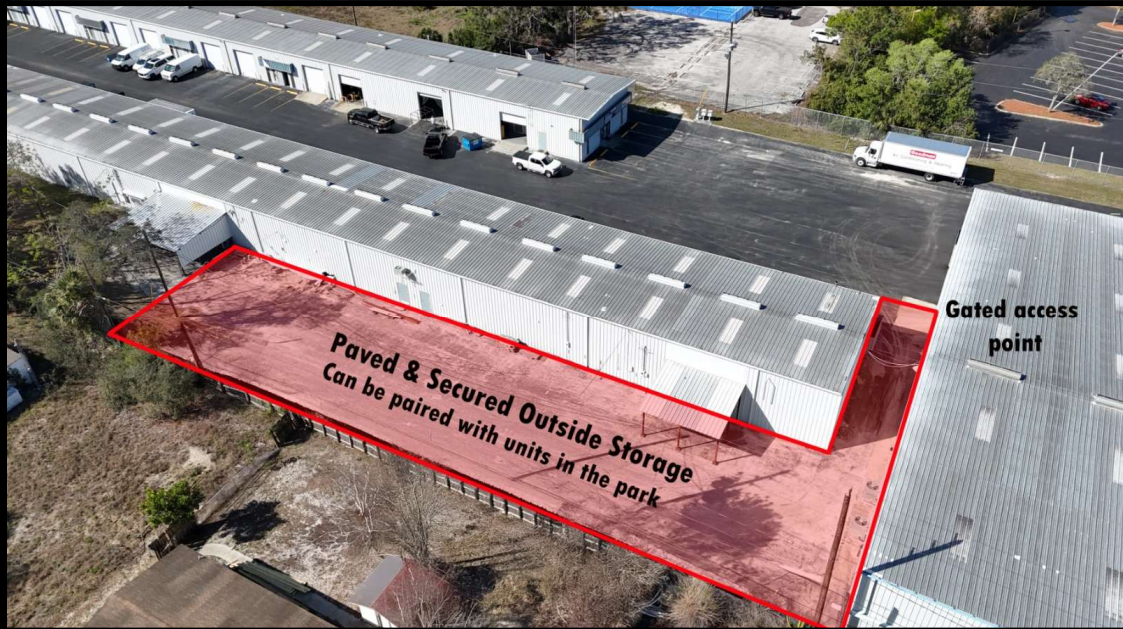
Alec Seow (865) - 863 - 0399

Robbie Lober (727) - 999 - 1806

Jason McCormick (561) - 613 - 5293



LEGACY CAPITAL
PARTNERS



Property Photos

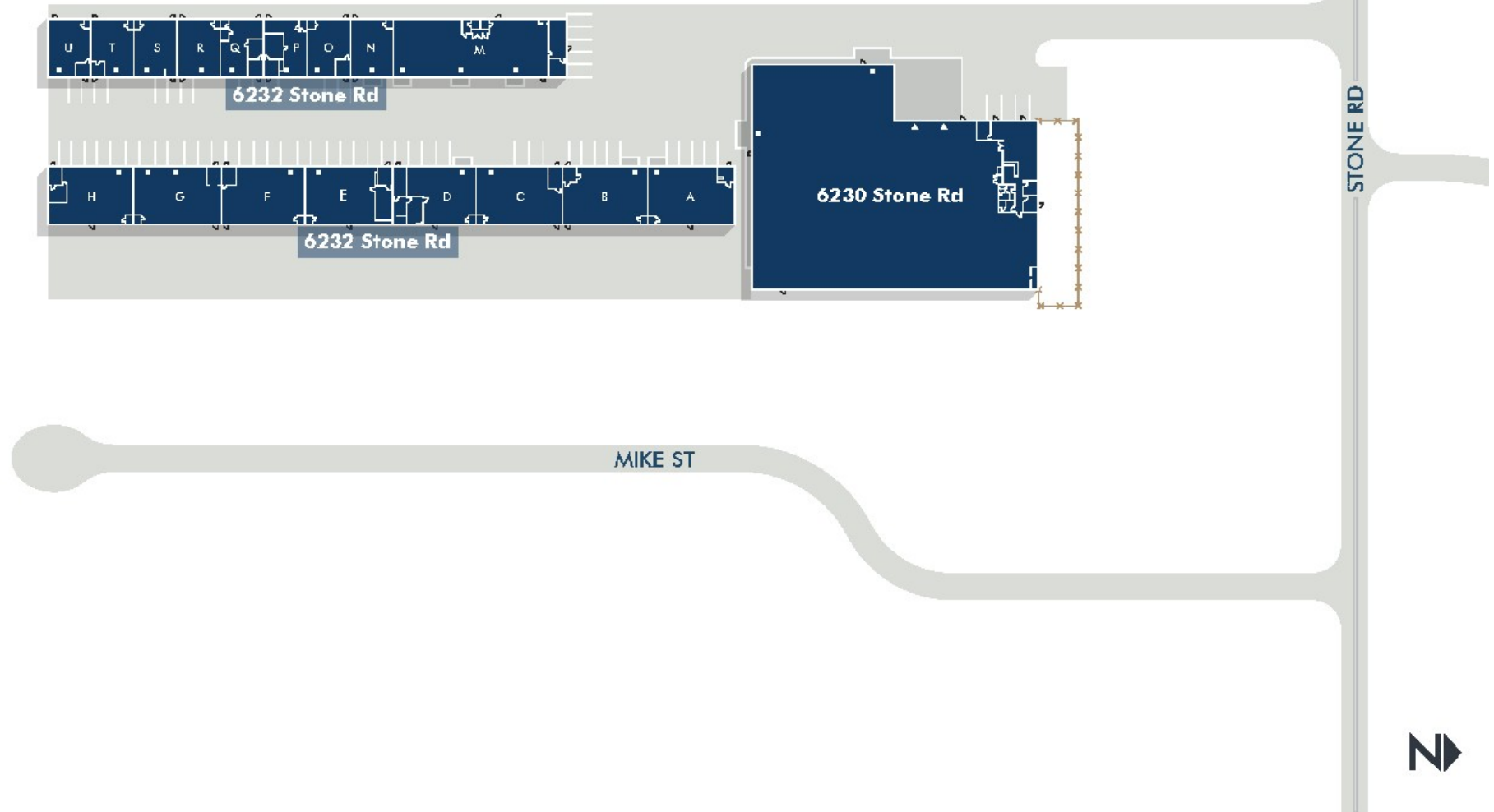


Interior Unit Photos

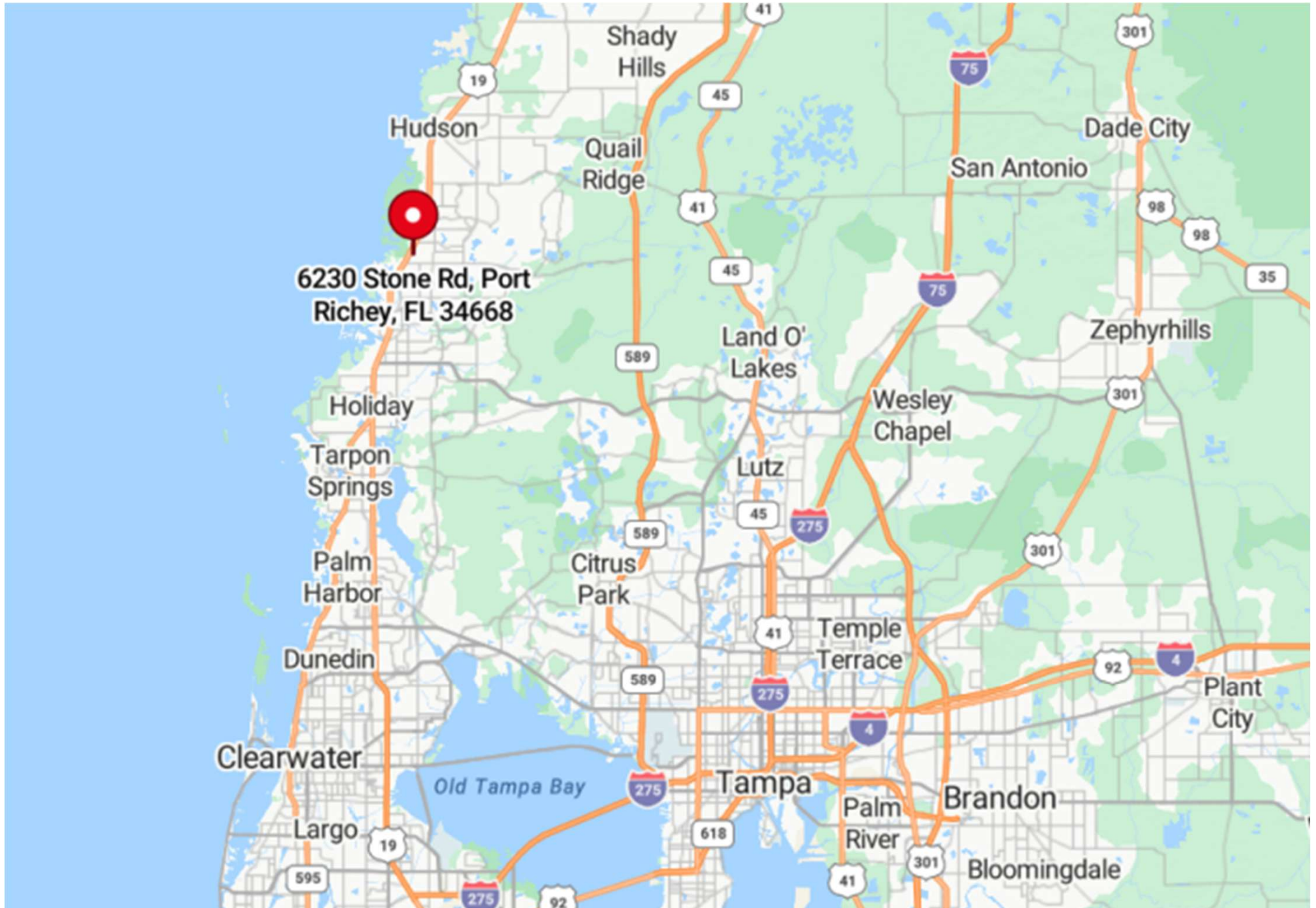


Site Plan

- ▲ Dock High Door
- Overhead Door
- ✂ Fenced Area



Close proximity to US HWY 19 providing easy access to Pinellas, Pasco, Hernando, and Hillsborough Counties.





Contact for pricing and more info:

Alec Seow
Associate
865.863.0399
Alec@LoberRealEstate.com

Robbie Lober, SIOR
Managing Member
727.999.1806
Robbie@LoberRealEstate.com

Jason McCormick
Senior Associate
561.613.5293
Jason@LoberRealEstate.com

LOBER
REAL ESTATE INVESTMENTS AND LEASING

The information contained in this document has been obtained from sources believed reliable. While Lober Real Estate LLC does not doubt its accuracy, Lober Real Estate LLC has not verified it and makes no guarantee, warranty, or representation about it. It is your responsibility to independently confirm its accuracy and completeness. Any projections, opinions, assumptions, or estimates used are for example only and do not represent the current or future performance of the property. The value of this transaction to you depends on tax and other factors which should be evaluated by your tax, financial, and legal advisors. You and your advisors should conduct a careful, independent investigation of the property to determine to your satisfaction the suitability of the property for your needs.