

Updated: 2021

# FOR LEASE

## COMMERCE PLACE

10155 102nd Street NW  
Edmonton, AB | [www.commerceplacedm.com](http://www.commerceplacedm.com)



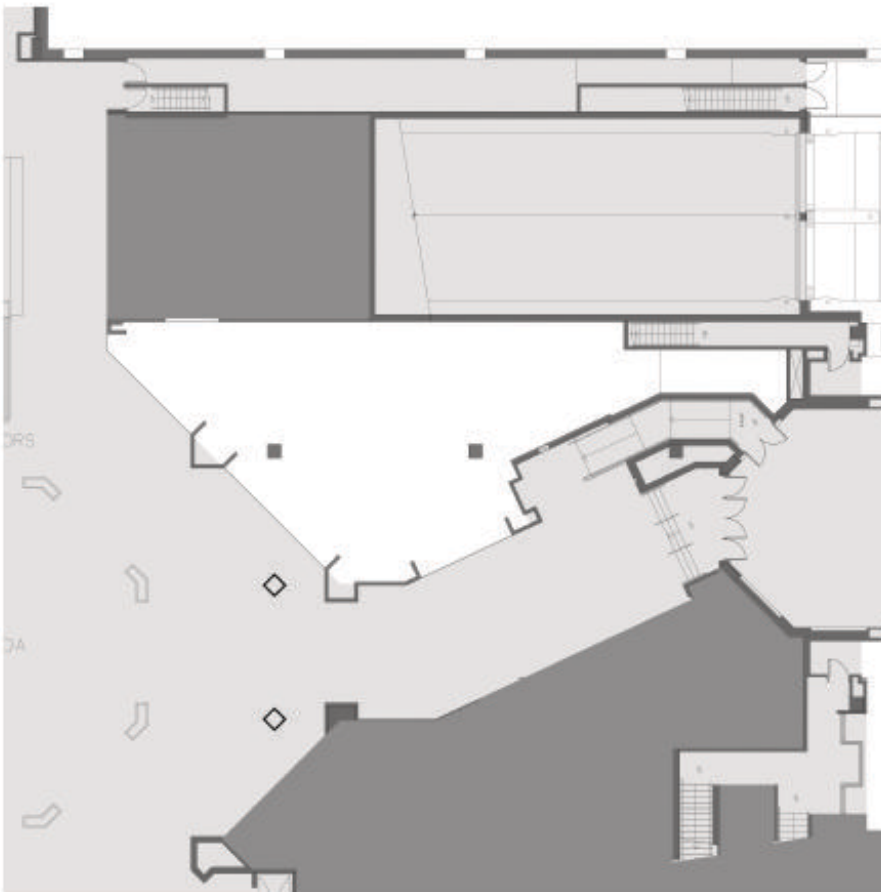
## Suite 195

**Total Square Feet**  
2,184 sq. ft.

**Availability:** Immediate

### Key features:

- Commerce Place can provide tenants with the opportunity to join the downtown marketplace in a superior site in terms of design, building materials, and street exposure.



KEY PLAN

**Meghan J. Kinney, B. Com.**  
Vice President, Leasing  
QuadReal Property Group Brokerage

**T** 780-701-1104  
**E** [meghan.kinney@quadreal.com](mailto:meghan.kinney@quadreal.com)  
**W** [www.quadreal.com](http://www.quadreal.com)

