

## Commercial for Rent - £2,017 per month

Manor Road, Wallington, SM6 0BW



### KEY FEATURES:

- EXCELLENT LOCATION • WELL EQUIPPED • THREE PHASE ELECTRIC • PREMIUM/GOODWILL £65,000 • GOING CONCERN

## Description

Premium/Goodwill: £65,000 Residenza proudly offers a stunning refurbished CLASS E currently operating as an Italian Restaurant with an Alcohol Licence and takeaway business in Wallington.

Postcode: SM6 0BW

Rent: £24,200 P/A

Premium/Goodwill: £65,000

Size Total: 1040 Sq/Ft

Ground: 650.9 Sq/Ft

Basement: 423.2 Sq/Ft

Rates: TBC with local authority

Lease: Approx 10 years unexpired with open to renew

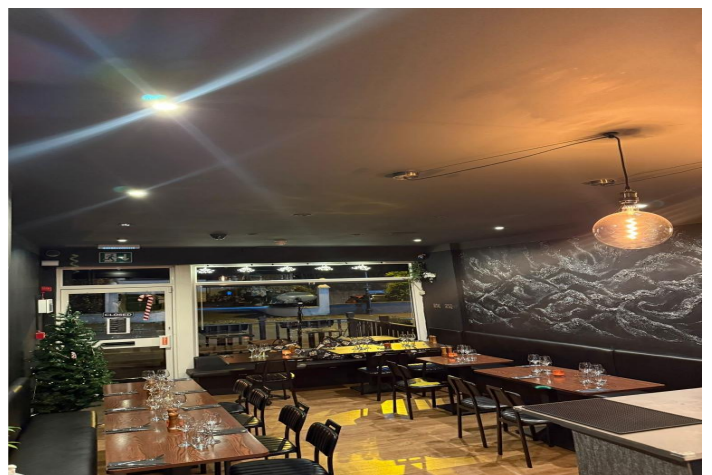
Insurance: 60% payable by commercial tenant

Legal costs: Incoming tenant liable for own and freeholder costs

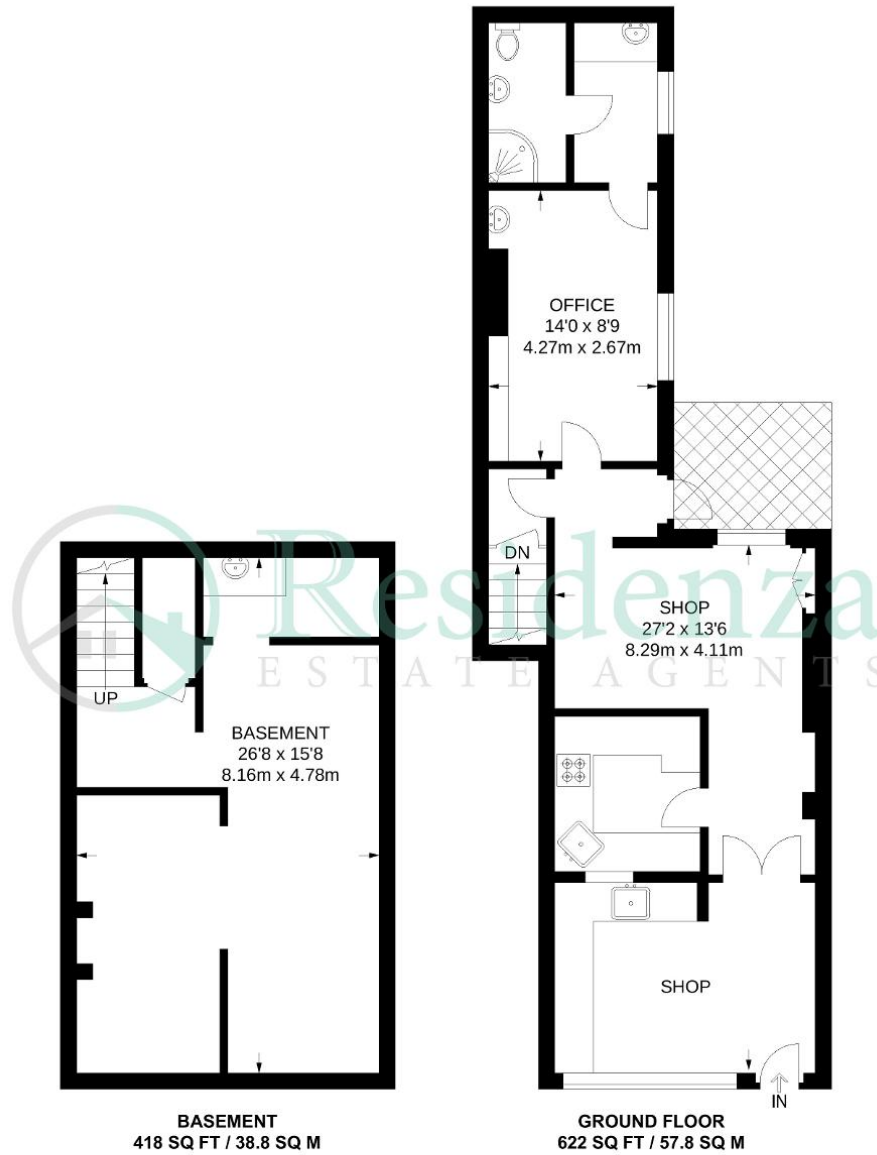
To view this property, please get in touch with our Tooting or Battersea branch. Alternatively, visit our website to view a range of available properties.

## Location

Conveniently located within a mile from Wallington town centre which offers a wide range of shopping, leisure and transport facilities including various bus routes along Manor Road and Wallington mainline train stations giving access to central London and the neighbouring towns. Viewing Highly Recommended.



Floorplan(s)



**APPROXIMATE GROSS INTERNAL AREA**  
1040 SQ FT / 96.6 SQ M