

# GLEMKA BUSINESS PARK

43264 BUSINESS PARK DRIVE, TEMECULA, CA 92590

PROFESSIONAL OFFICE  
SPACE FOR LEASE



FOR MORE INFORMATION, PLEASE CONTACT:

**CAREY PASTOR** | Senior Vice President

(951) 297-7434 | [cpastor@cbcsocalgroup.com](mailto:cpastor@cbcsocalgroup.com)

CalDRE License # 01403298



**COLDWELL BANKER  
COMMERCIAL**  
SC

# GLEMKA BUSINESS PARK

43264 BUSINESS PARK DRIVE, TEMECULA, CA 92590

PROFESSIONAL OFFICE  
SPACE FOR LEASE

## PROJECT HIGHLIGHTS

- The Glemka Business Park is located on Business Park Drive in Temecula, CA
- Easy access to the I-15 freeway via Rancho California Rd.
- Ample parking
- +/- 1,700 - 2,575 SF available. Can be combined for up to +/- 4,275 SF
- Multiple office configurations available
- Immediate availability
- FiOS enabled



# GLEMKA BUSINESS PARK

43264 BUSINESS PARK DRIVE, TEMECULA, CA 92590

PROFESSIONAL OFFICE  
SPACE FOR LEASE

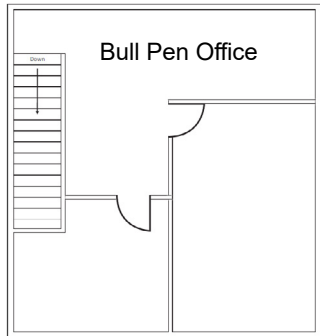
## AVAILABILITY

43264 Business Park Drive

SUITE	SIZE	MONTHLY BASE RENT	EST. MONTHLY CAOAE	SPACE DESCRIPTION
105	±2,575 SF	\$3,065.00	\$541.00	1st floor: reception area, 2 private offices, 1 restroom, wetbar 2nd floor: 1 private office and 2 open bull-pen offices
106	±1,700 SF	\$2,023.00	\$357.00	1st floor: reception area, 2 private offices, 1 restroom, wetbar 2nd floor: 2 private offices and open bull-pen office

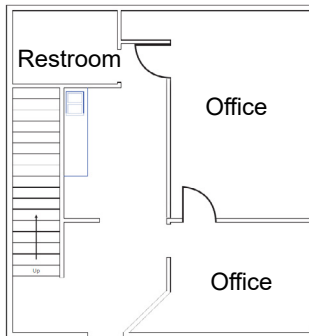
CAOE = Common Area Operating Expenses

**SUITE 106  
2ND FLOOR**

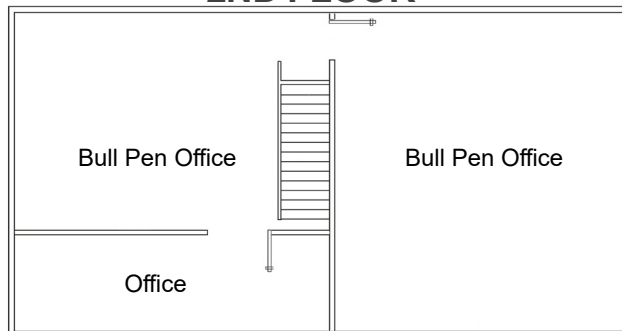


\* Not to scale

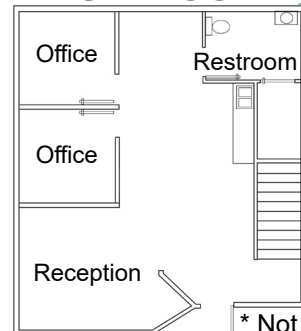
**SUITE 106  
1ST FLOOR**



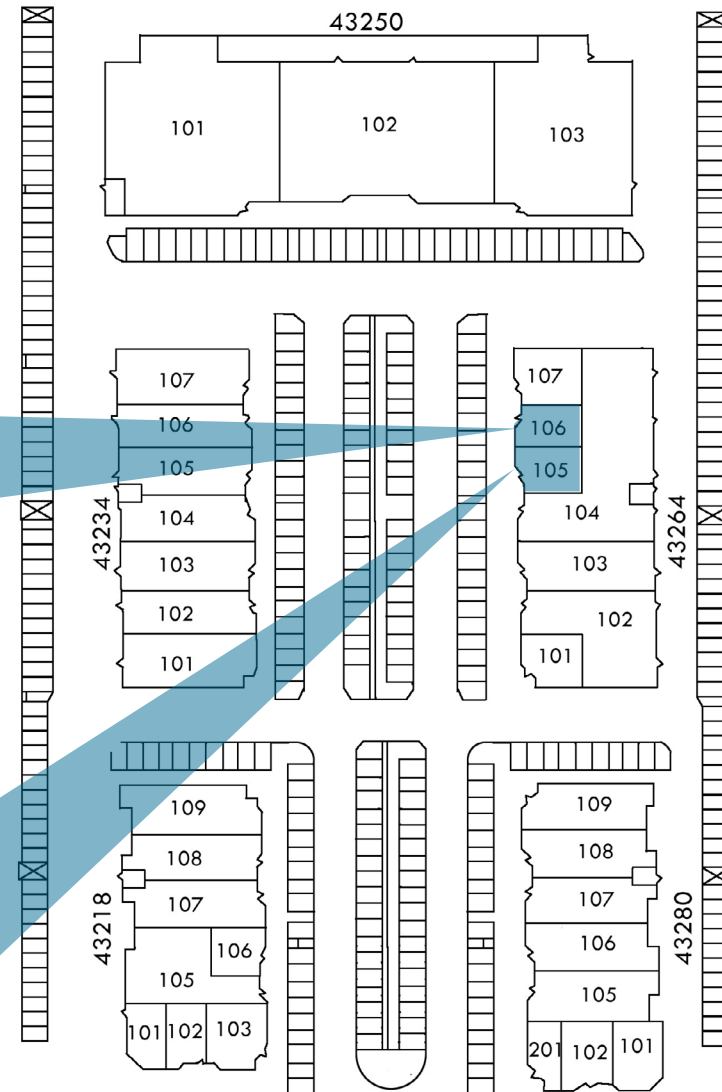
**SUITE 105  
2ND FLOOR**



**SUITE 105  
1ST FLOOR**



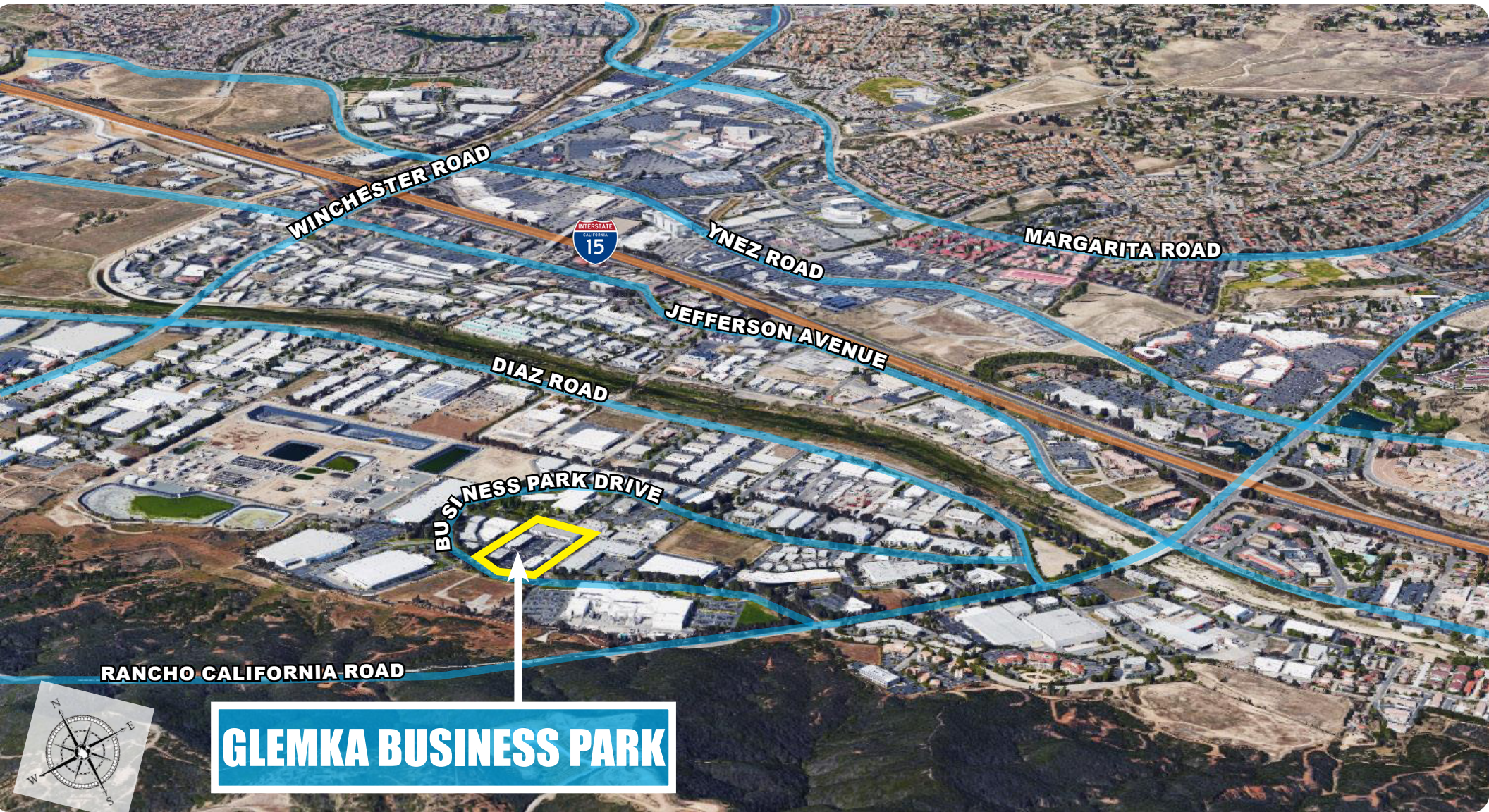
\* Not to scale



# GLEMKA BUSINESS PARK

43264 BUSINESS PARK DRIVE, TEMECULA, CA 92590

PROFESSIONAL OFFICE  
SPACE FOR LEASE

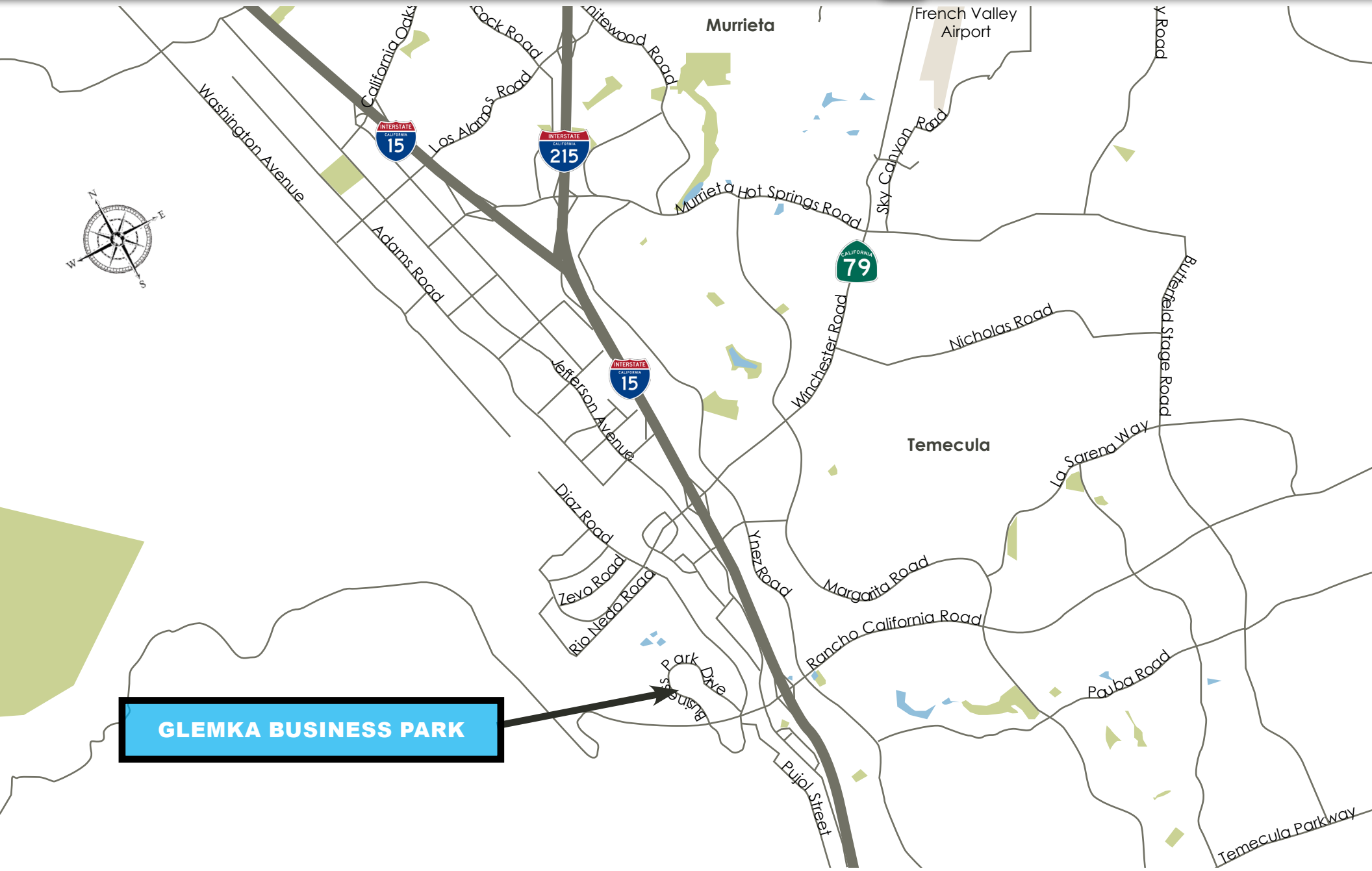


**GLEMKA BUSINESS PARK**

# GLEMKA BUSINESS PARK

43264 BUSINESS PARK DRIVE, TEMECULA, CA 92590

PROFESSIONAL OFFICE  
SPACE FOR LEASE



# GLEMKA BUSINESS PARK

43264 BUSINESS PARK DRIVE, TEMECULA, CA 92590

PROFESSIONAL OFFICE  
SPACE FOR LEASE



FOR MORE INFORMATION, PLEASE CONTACT:

**CAREY PASTOR**

Senior Vice President

951.297.7434

[cpastor@cbsocalgroup.com](mailto:cpastor@cbsocalgroup.com)

CalDRE # 01403298

27368 Via Industria | Suite 102

Temecula | California | 92590

t 951.200.7683 | f 951.239.3147

[cbsocalgroup.com](http://cbsocalgroup.com)



**COLDWELL BANKER  
COMMERCIAL**

SC