

ONE
PARK
SQUARE

ONE STOP. ONE
PARK SQUARE.

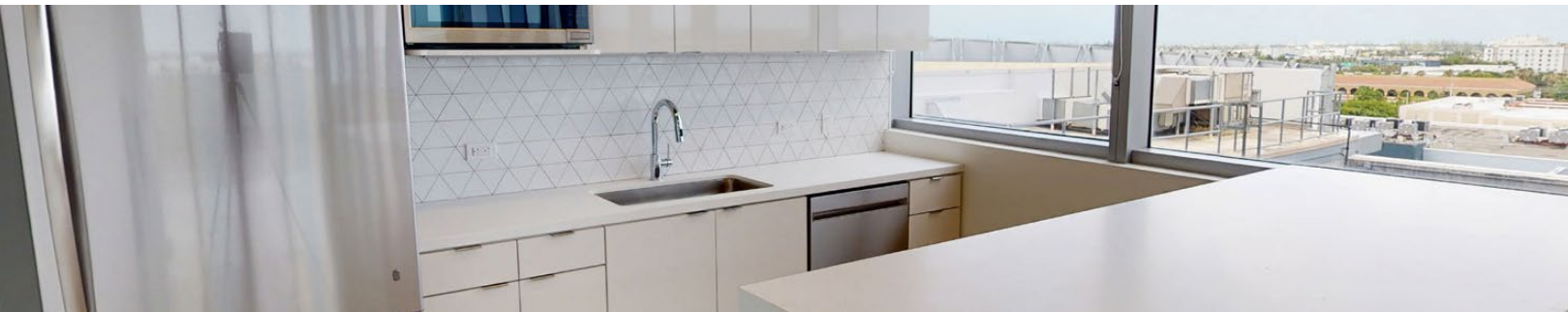
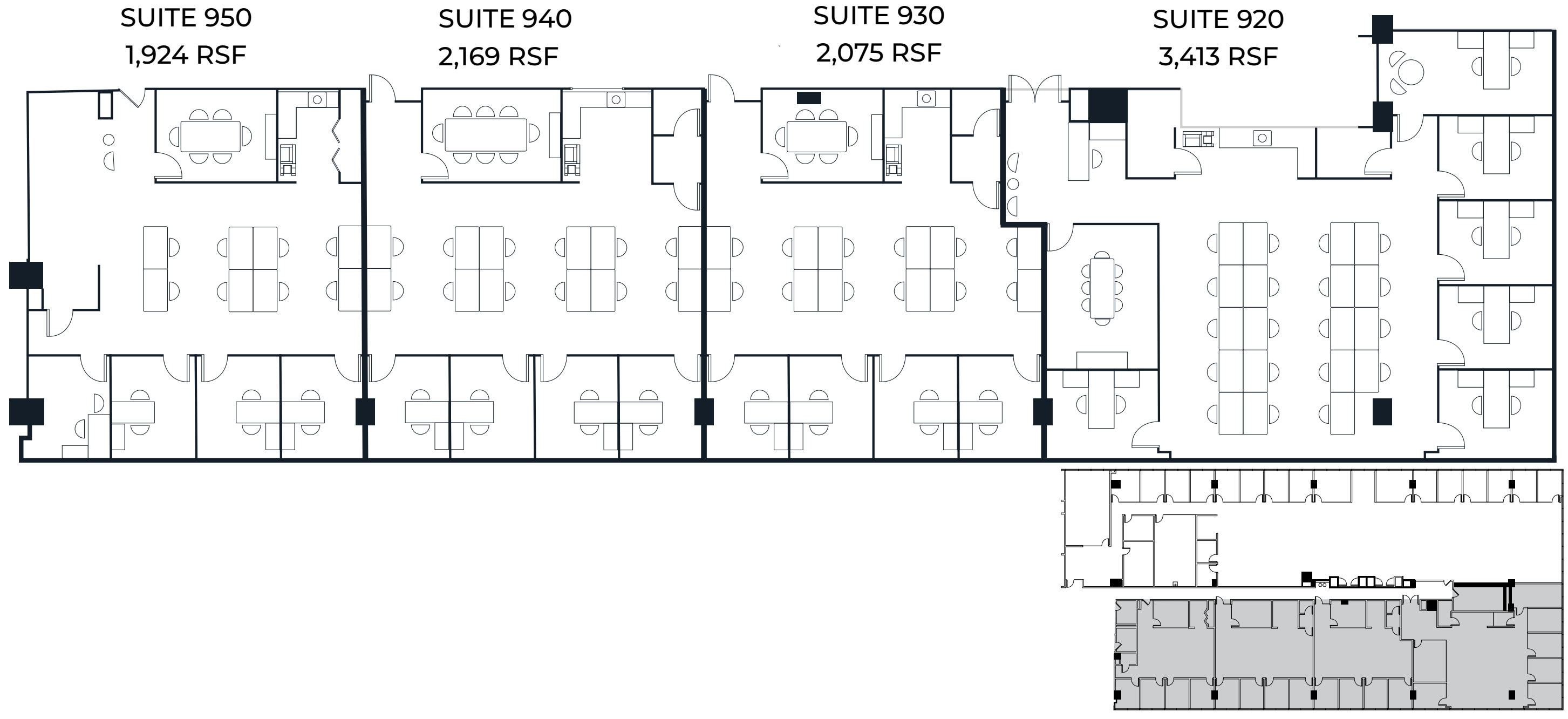
CLASS A NEW OFFICE SPACE
IN THE HEART OF DORAL, FL

3470 NW 82nd Avenue, Doral, FL 33122



FLOOR PLAN

9TH FLOOR SPEC SUITES - 1,924 RSF - 3,413 RSF



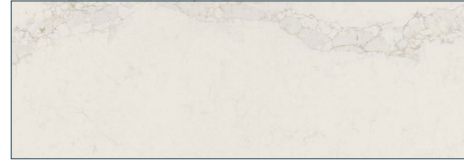
FINISH BOARD



CARPET
SHAW CONTRACT
DISCONNECT TILE
5T663 | STONE 62530



BACKSPLASH TILE
TILEBAR PARADISE 2.0
GRIS | POLISHED 1"



COUNTERTOP STONE
CAESARSTONE 5115 CALA-
CATTÀ STILLSTORM



LUXURY VINYL TILE
SHAW CONTRACT
TERRAIN II | 0454V
BUTTERNUT 00210



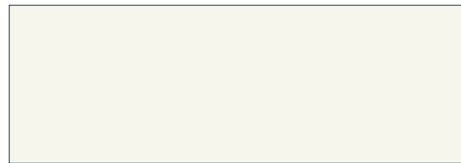
CABINET LAMINATE
FORMICA | 7197-58 DO-
VER WHITE



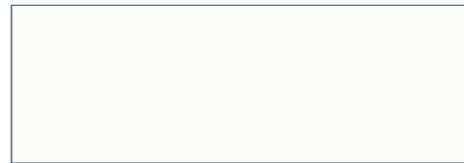
VINYL COMPOSITION TILE
ARMSTRONG | 51861 SOFT WARM
GRAY



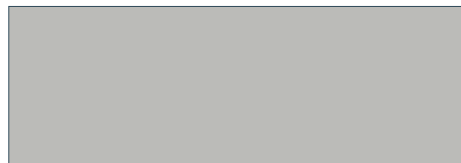
COUNTERTOP LAMINATE
FORMICA 912C-90 STORM
MATTE



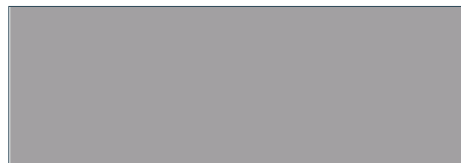
GENERAL PAINT
BM | OC-66
SNOW WHITE



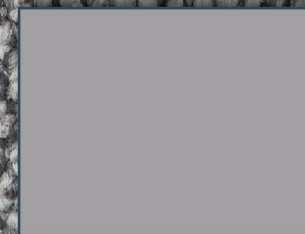
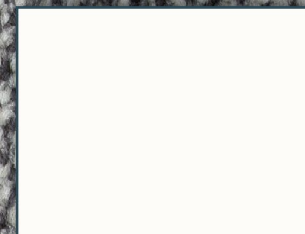
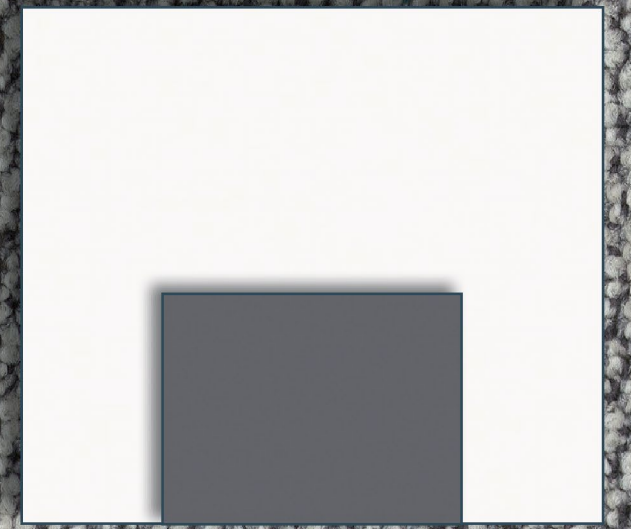
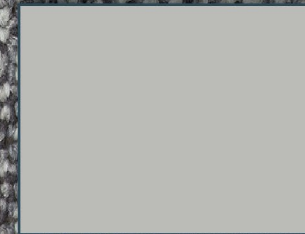
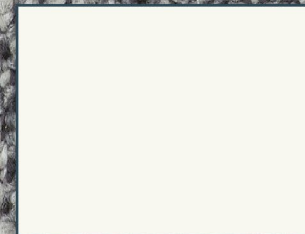
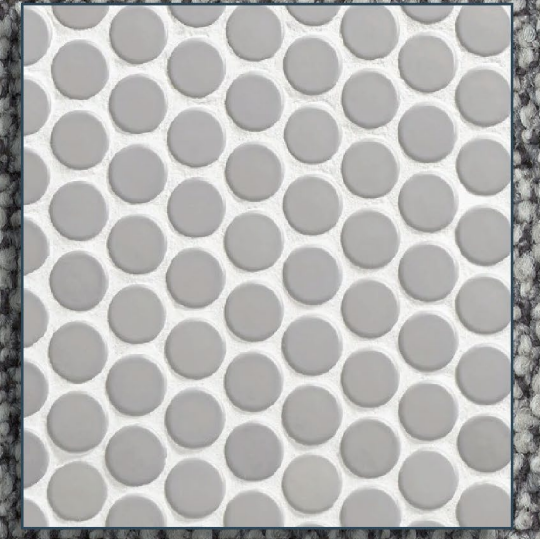
RUBBER BASE
TARKETT | MW-4" H
50 WHITE W



ACCENT PAINT
BM | HC-169
COVENTRY GRAY



RUBBER BASE
TARKETT | MW-4" H
TA5 COLONIAL GREY



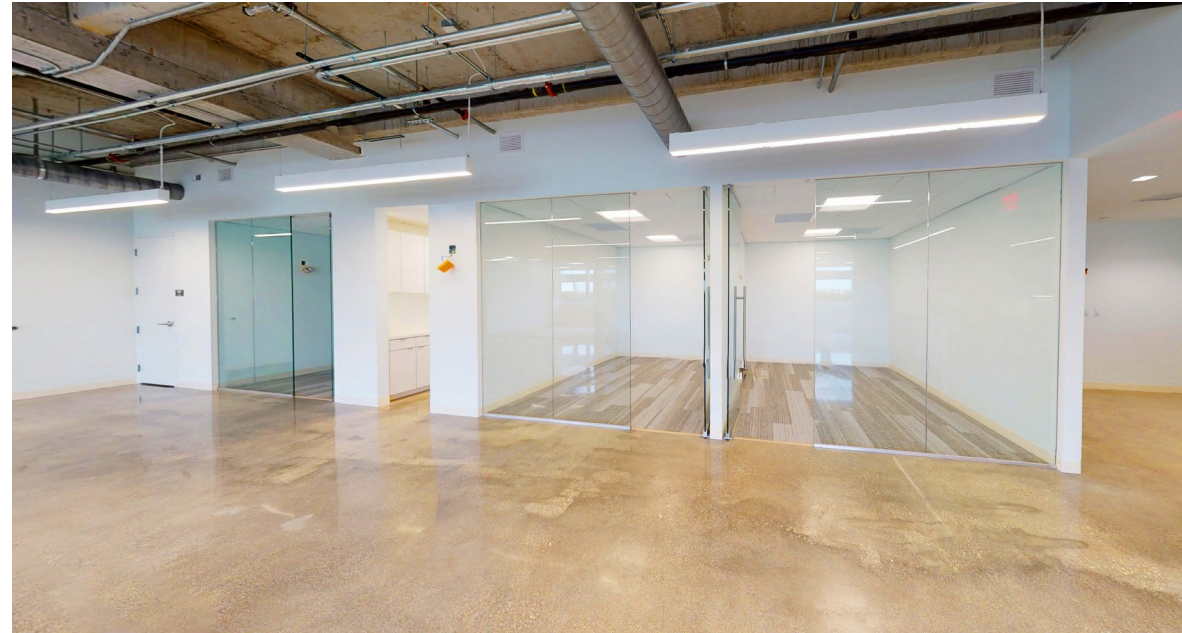
LOOK AND FEEL

This office space combines a raw, industrial feel with refined, modern finishes for a distinctly professional atmosphere. Its design is defined by a sophisticated neutral palette, featuring crisp Snow White and Coventry Gray paints alongside the organic warmth of Butternut luxury vinyl tile. Extensive glass partitions and exposed ceilings enhance the sense of volume and light, promoting a transparent and open work culture. Finishes such as textured Disconnect carpet tiles, sleek Formica laminates, and elegant Calacatta Still-storm countertops provide tactile contrast and functional sophistication throughout the space.



LOOK AND FEEL

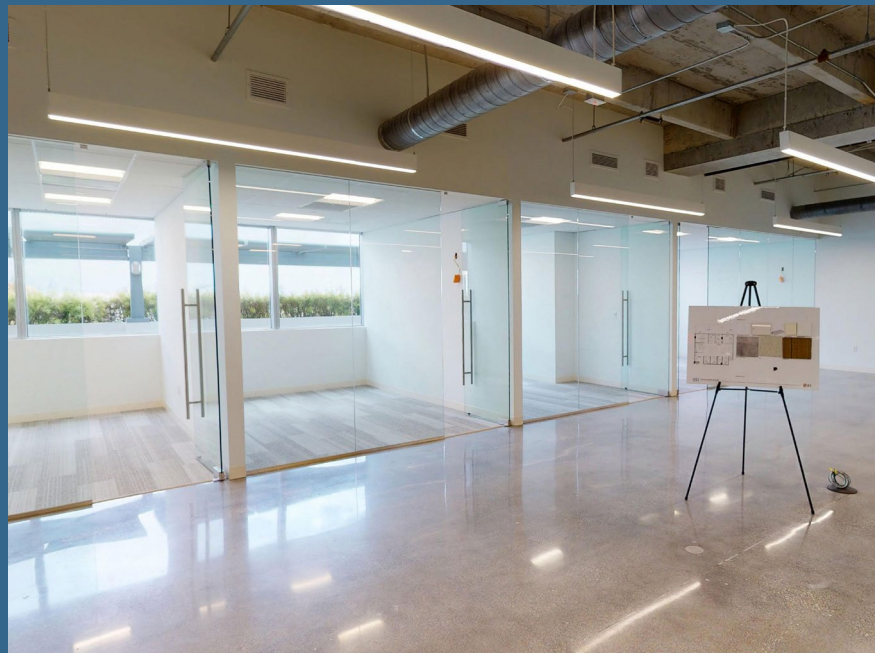
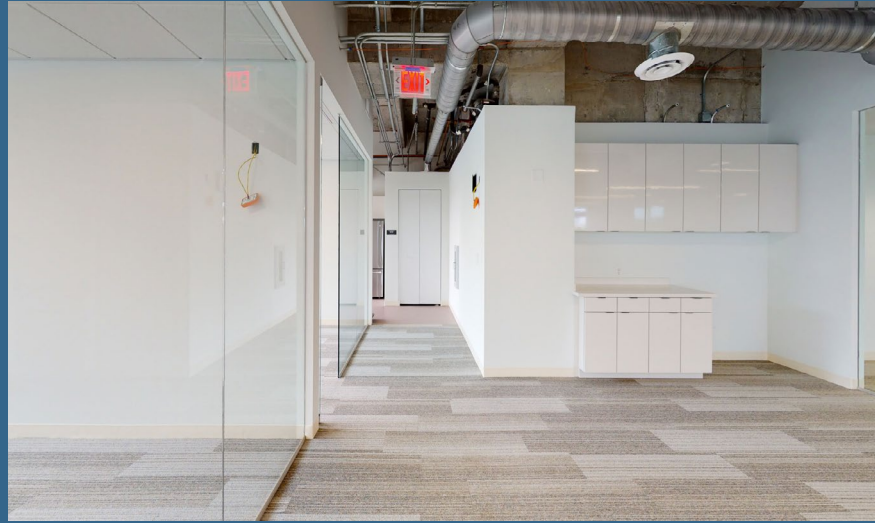
This office space combines a raw, industrial feel with refined, modern finishes for a distinctly professional atmosphere. Its design is defined by a sophisticated neutral palette, featuring crisp Snow White and Coventry Gray paints alongside the organic warmth of Butternut luxury vinyl tile. Extensive glass partitions and exposed ceilings enhance the sense of volume and light, promoting a transparent and open work culture. Finishes such as textured Disconnect carpet tiles, sleek Formica laminates, and elegant Calacatta Still-storm countertops provide tactile contrast and functional sophistication throughout the space.



LOOK AND FEEL

OPTION - 3

This office space combines a raw, industrial feel with refined, modern finishes for a distinctly professional atmosphere. Its design is defined by a sophisticated neutral palette, featuring crisp Snow White and Coventry Gray paints alongside the organic warmth of Butternut luxury vinyl tile. Extensive glass partitions and exposed ceilings enhance the sense of volume and light, promoting a transparent and open work culture. Finishes such as textured Disconnect carpet tiles, sleek Formica laminates, and elegant Calacatta Still-storm countertops provide tactile contrast and functional sophistication throughout the space.



ONEPARKSQUARE.COM

**ONE
PARK
SQUARE**



QUESTIONS? LET'S CHAT.

Doug Okun
Senior Managing Director
+1 (305) 960-8444
doug.okun@jll.com

Steven Hurwitz
Executive Managing Director
+1 (305) 960-8441
steven.hurwitz@jll.com

Joseph Pereia
Brokerage Associate
+1 (786) 626 6290
joseph.pereia@jll.com

ONE PARK SQUARE
3470 NW 82nd Avenue
Doral, FL 33122

Although information has been obtained from sources deemed reliable, JLL does not make any guarantees, warranties or representations, express or implied, as to the completeness or accuracy as to the information contained herein. Any projections, opinions, assumptions or estimates used are for example only. There may be differences between projected and actual results, and those differences may be material. JLL does not accept any liability for any loss or damage suffered by any party resulting from reliance on this information. If the recipient of this information has signed a confidentiality agreement with JLL regarding this matter, this information is subject to the terms of that agreement. ©2025 Jones Lang LaSalle Brokerage, Inc. All rights reserved.