

Industrial/Flex | For Lease

CBRE

# Silver Star Business Center

3,960 to 8,020 SF Available

4026 & 4100 Silver Star Rd  
Orlando, FL 32808

Grade Level Loading | 0.17 Acre Yard | NW Orange/Silver Star Submarket

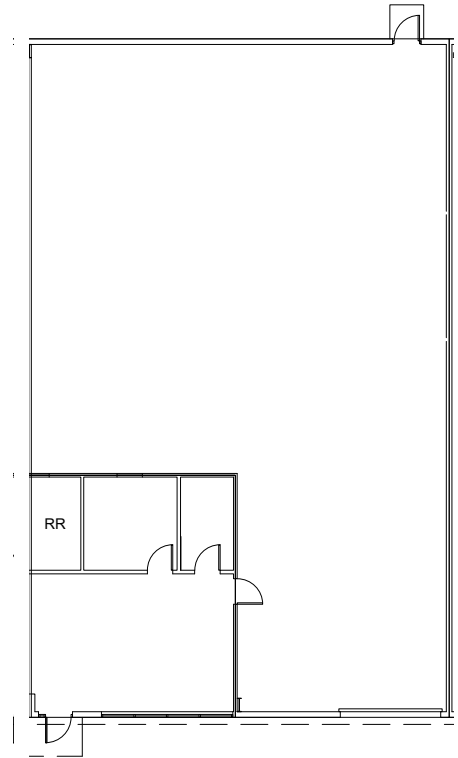


## 4026 Building - Suite A2

### SUITE HIGHLIGHTS

- + 3,960 SF Total
- + 693 SF Office Total
- + 3,267 SF Warehouse
- + 20'-24' Clear Height
- + 2.0/1000 SF Parking Ratio
- + One 12'x12' Grade Level Door
- + 3 Phase Power - 120/208V

Asking Rate: \$16.50 | Opex: \$4.25 = \$6,847.50/Month | Available 4/1/2026

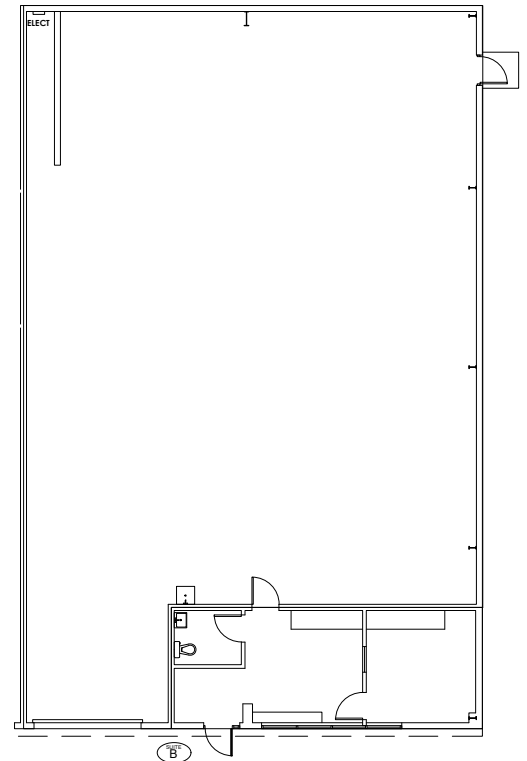


## 4026 Building - Suite B

### SUITE HIGHLIGHTS

- + 4,060 SF Total
- + 462 SF Office
- + 3,598 SF Warehouse
- + 20'-24' Clear Height
- + 2.0/1000 SF Parking Ratio
- + One 12'x12' Grade Level Door
- + 3 Phase Power - 120/208V
- + 200 Amps

Asking Rate: \$16.50 | Opex: \$4.25 = \$6,935.69/Month | Available 4/1/2026



### CONTACT US

Alex Eastwood  
850 356 8231

Cameron Thomas  
407 404 5078

Jose Rivera (Español)  
407 404 5067

## 4026 Building - Suites A2 & B

### SUITE HIGHLIGHTS

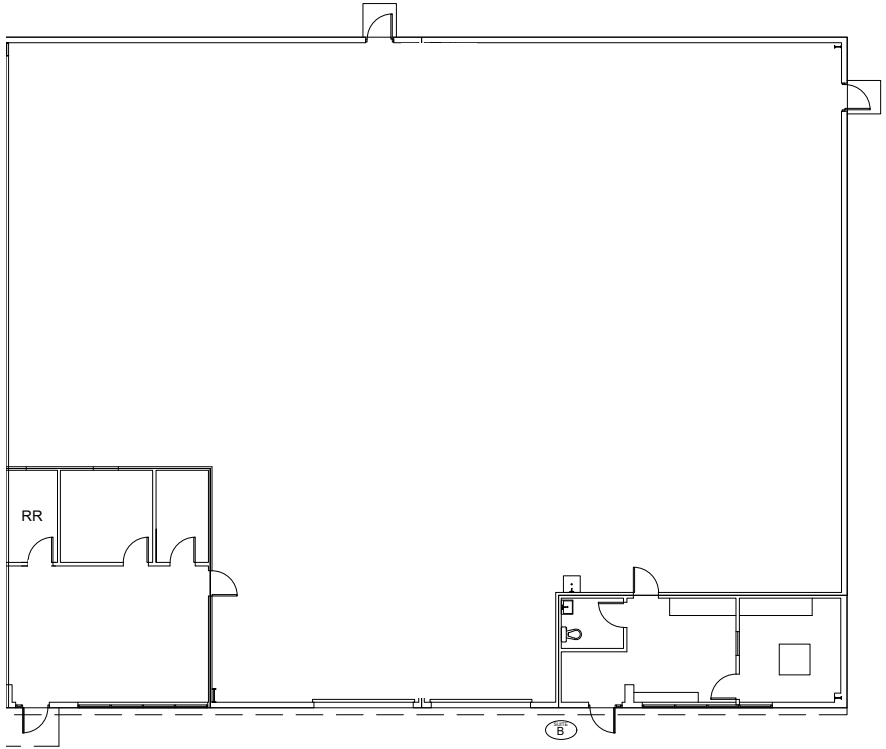
- + 8,020 SF Total
- + 1,155 SF Office Total
- + 6,865 SF Warehouse
- + 20'-24' Clear Height
- + 2.0/1000 SF Parking Ratio
- + Two 12'x12' Grade Level Doors
- + 3 Phase Power - 120/208V

Asking Rate: \$15.75

Opex: \$4.25

\$13,366.67/Month

Available 4/1/2026



**±0.17 Acre Secure Laydown Yard**  
*Can be combined with any suite.*  
*Please inquire for pricing.*



### CONTACT US

Alex Eastwood  
850 356 8231

Cameron Thomas  
407 404 5078

Jose Rivera (Español)  
407 404 5067

## Location & Park Plan



### CONTACT US

Alex Eastwood  
850 356 8231

Cameron Thomas  
407 404 5078

Jose Rivera (Español)  
407 404 5067

## Silver Star Business Center

4026 & 4100 Silver Star Rd | Orlando, FL 32808

For Lease

# Packing District

Silver Star Business Center consists of 32,000 square feet across two grade level buildings, complete with a small IOS yard. The facility features 12' x 12' grade-level loading doors, spacious offices, and is conveniently location near major highways, restaurants, recreation options, and both labor and decision maker housing.

## Property Highlights

- + NW Orange County Submarket
- + 32,000 SF Total
- + 2.65 Acre Site
- + 2.0/1000 SF Parking Ratio
- + 20' - 24' Clear Height
- + 12' x 12' Grade Level Doors
- + Zoning: I-G
- + 0.17 & 0.06 Acres IOS Available
- + Near the "Contractor District"
- + Proximity to Dining Amenities

## Location Highlights

Silver Star Business Center offers flex/ industrial occupiers a significant advantage as it's located in the dynamic NW Orange County Submarket, close to major highways, near the "contractor district", and in the path of

progress for the Orlando MSA's NW expansion. Within twelve (12) minutes of Interstate-4 and nine (9) minutes from SR-408 (our East/West Expressway), Silver Star Business Center is perfectly positioned to accommodate a host

of users. The area also offers numerous dining and recreation amenities, such as the brand new Leonard & Marjorie Williams Family YMCA. The Packing District and College Park offer a wide variety of lunch options.

## Contact Us

### Alex Eastwood

Senior Associate  
850 356 8231  
alex.eastwood@cbre.com

### Cameron Thomas

Senior Associate  
407 404 5078  
cameron.thomas@cbre.com

### Jose Rivera

Associate  
407 404 5067  
jose.rivera1@cbre.com



© 2025 CBRE, Inc. All rights reserved. This information has been obtained from sources believed reliable, but has not been verified for accuracy or completeness. You should conduct a careful, independent investigation of the property and verify all information. Any reliance on this information is solely at your own risk. CBRE and the CBRE logo are service marks of CBRE, Inc. All other marks displayed on this document are the property of their respective owners, and the use of such logos does not imply any affiliation with or endorsement of CBRE. Photos herein are the property of their respective owners. Use of these images without the express written consent of the owner is prohibited.

**CBRE**