

UNITS FOR LEASE

# YORBA LINDA COMMERCE CENTER

3700 - 3960 Prospect Ave, Yorba Linda, CA 92886



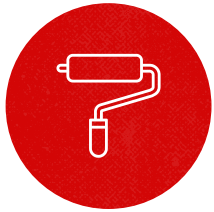
EXCLUSIVELY LISTED BY:



Gary Martinez, CCIM, SIOR  
**(714) 905-9393**  
gary@ashwillassociates.com  
DRE Lic #01318932

**Ashwill**  
**Associates**  
COMMERCIAL REAL ESTATE

# PROPERTY FEATURES



Refurbished Units  
Move-in Ready



Ground Level  
Doors



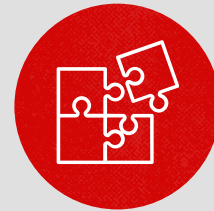
Space to Grow  
Your Business



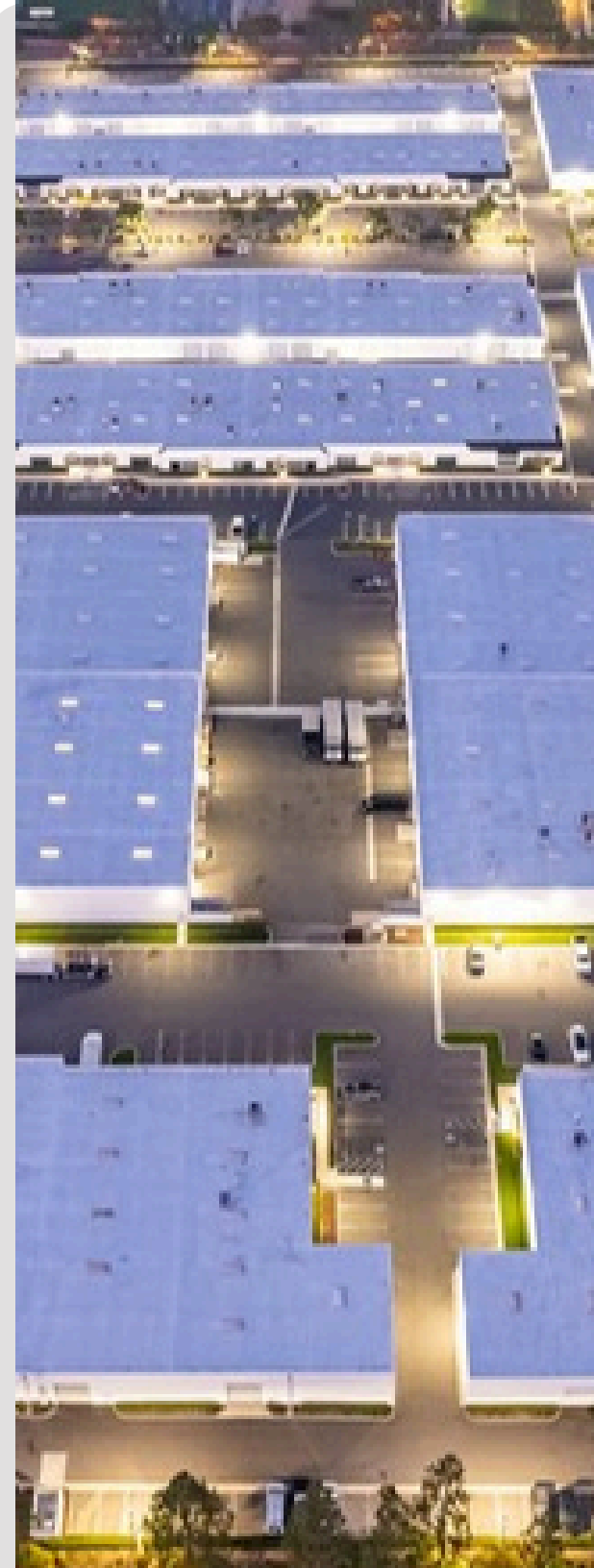
Professional  
On-Site Management



Ample  
Parking



Multiple Space  
Configurations



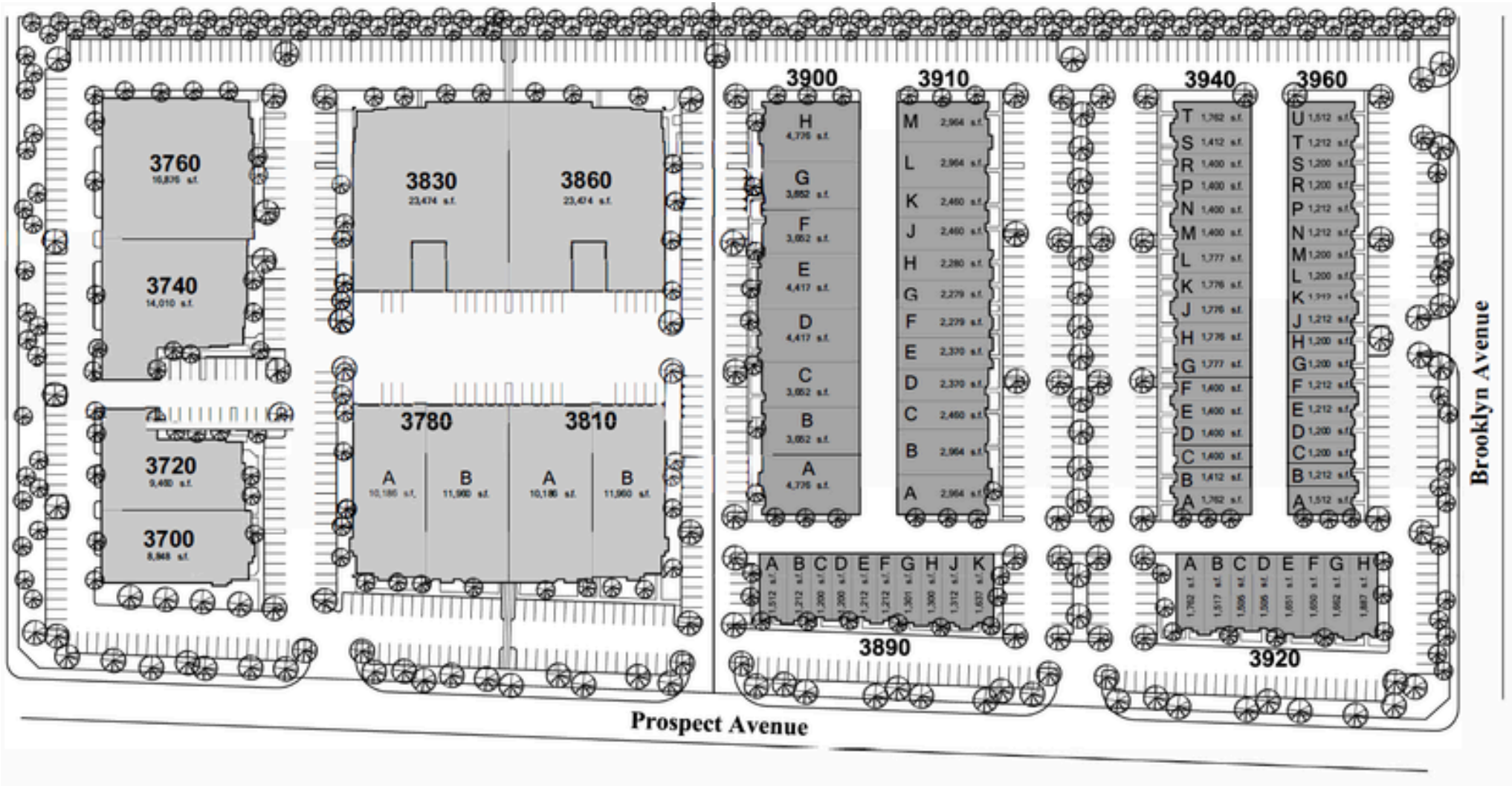


EXCLUSIVELY LISTED BY:



Gary Martinez, CCIM, SIOR  
**(714) 905-9393**  
gary@ashwillassociates.com  
DRE Lic #01318932

**Ashwill**  
**Associates**  
COMMERCIAL REAL ESTATE



## SITE PLAN



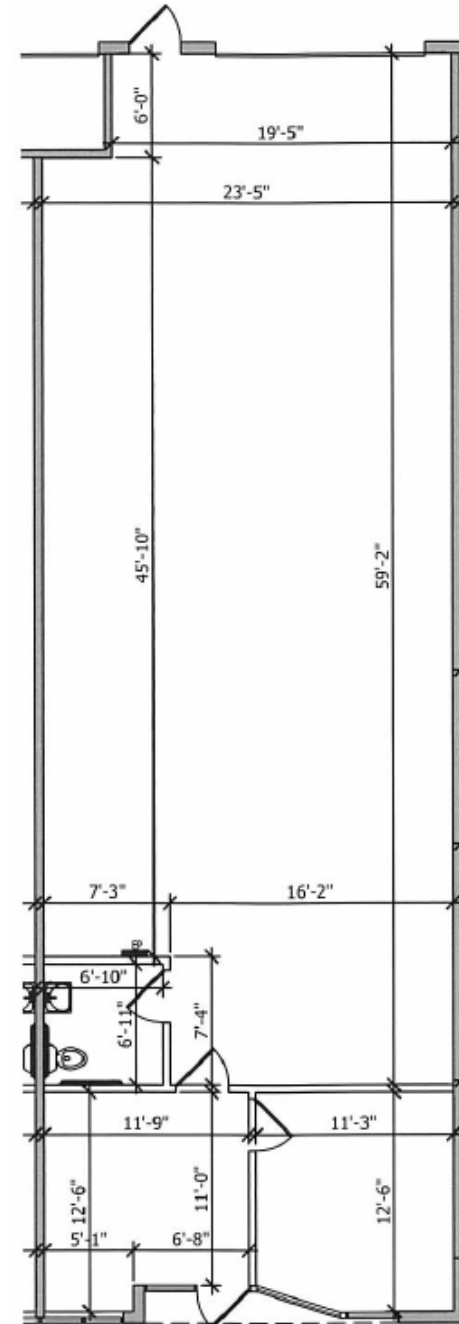
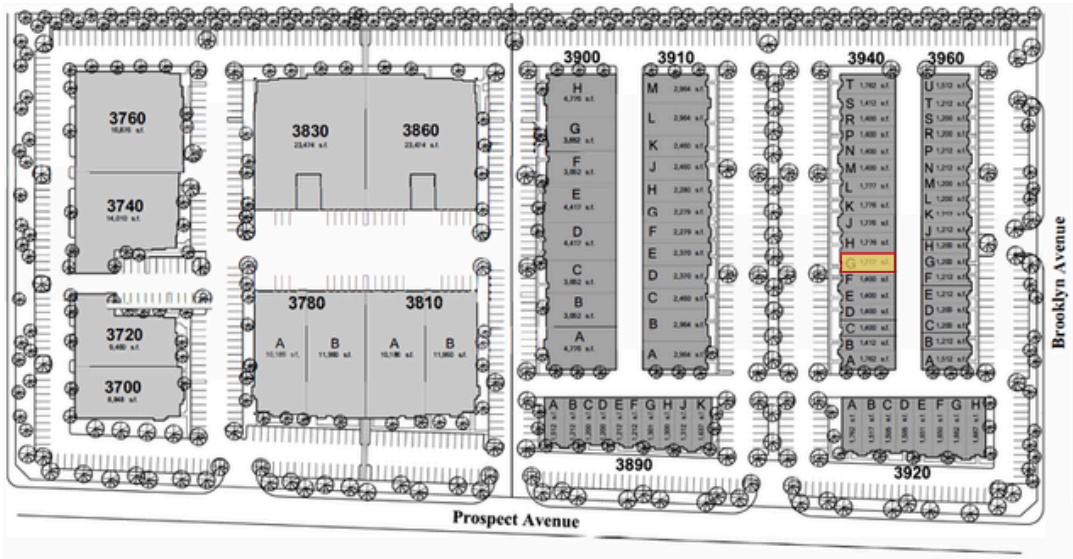
Gary Martinez, CCIM, SIOR  
**(714) 905-9393**  
 gary@ashwillassociates.com  
 DRE Lic #01318932

**Ashwill**  
**Associates**  
 COMMERCIAL REAL ESTATE

## SUITE 3940-G

± 1,777 Total SF

± 322 Office SF



\*Floor Plans Not to Scale



UNITS FOR LEASE

# YORBA LINDA COMMERCE CENTER

3700 - 3960 Prospect Ave, Yorba Linda, CA 92886



**Ashwill**  
**Associates**  
COMMERCIAL REAL ESTATE

**Disclaimer:** All information contained herein is deemed reliable but not guaranteed. Prospective tenants should independently verify all measurements, features, and zoning regulations. Availability, pricing, and terms are subject to change without notice. This is a marketing brochure and not a legally binding offer.

For more information:



Gary Martinez, CCIM, SIOR  
**(714) 905-9393**  
gary@ashwillassociates.com  
DRE Lic #01318932