

A graphic design for Waterfront Plaza in San Francisco. The background is a photograph of a modern brick building with large windows, surrounded by lush green trees. In the distance, the San Francisco skyline is visible, including the Transamerica Pyramid. The image is overlaid with several large, colorful, semi-transparent geometric shapes: a dark blue triangle on the left, an orange triangle pointing down in the center, a green triangle pointing up in the center, a light green triangle pointing down on the right, and a blue triangle on the right. The text 'WATERFRONT PLAZA' is written in large, white, bold, sans-serif capital letters across the middle of the image. Below it, 'SAN FRANCISCO' is written in smaller, white, bold, sans-serif capital letters.

WATERFRONT PLAZA

SAN FRANCISCO

FAR FROM ORDINARY

Located in San Francisco's Northern Waterfront just minutes from downtown, Waterfront Plaza offers a green campus environment, modern office spaces, abundant parking, and growing amenities as part of Jamestown's extensive multi-property Northern Waterfront Portfolio.



3 ACRES
OF GREEN SPACE



ONE OF THE LARGEST
OFFICE CAMPUSES IN
SAN FRANCISCO



**ON-SITE
PRESCHOOL/DAYCARE**



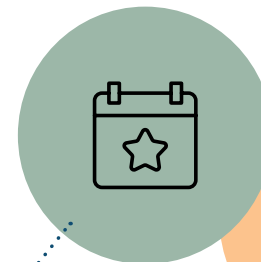
**MULTIPLE
ON-SITE
RESTAURANTS**



**STUNNING
BAY VIEWS**



**FREE EVENTS
& FITNESS CLASSES**

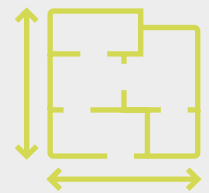


**5-MINUTE
SHUTTLE TO
DOWNTOWN BART**



FIND YOUR PERFECT FIT AT WATERFRONT PLAZA

Set along San Francisco's Northern Waterfront, Waterfront Plaza offers a peaceful, connected campus where work and lifestyle naturally intersect. With flexible office sizes, modern conveniences, and a location that continues to attract leading tech and AI tenants, the office campus is a destination designed to support growth and innovation.



1K - 20K SF AVAILABLE

Waterfront Plaza offers flexible suites of all sizes to support growth at every stage, from startup to scale-up

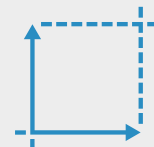


SECURE PARKING WITH IMMEDIATE GARAGE ACCESS



17 TECH & AI TENANTS

have recently moved to Jamestown's Northern Waterfront portfolio, including 15 AI tenants in the last 12 months totaling over 120K SF



1.6M SF

AI & tech firms leased 1.6 million SF in San Francisco last year, heavily focused along the Northern Waterfront

Join Industry Leaders at Waterfront Plaza:

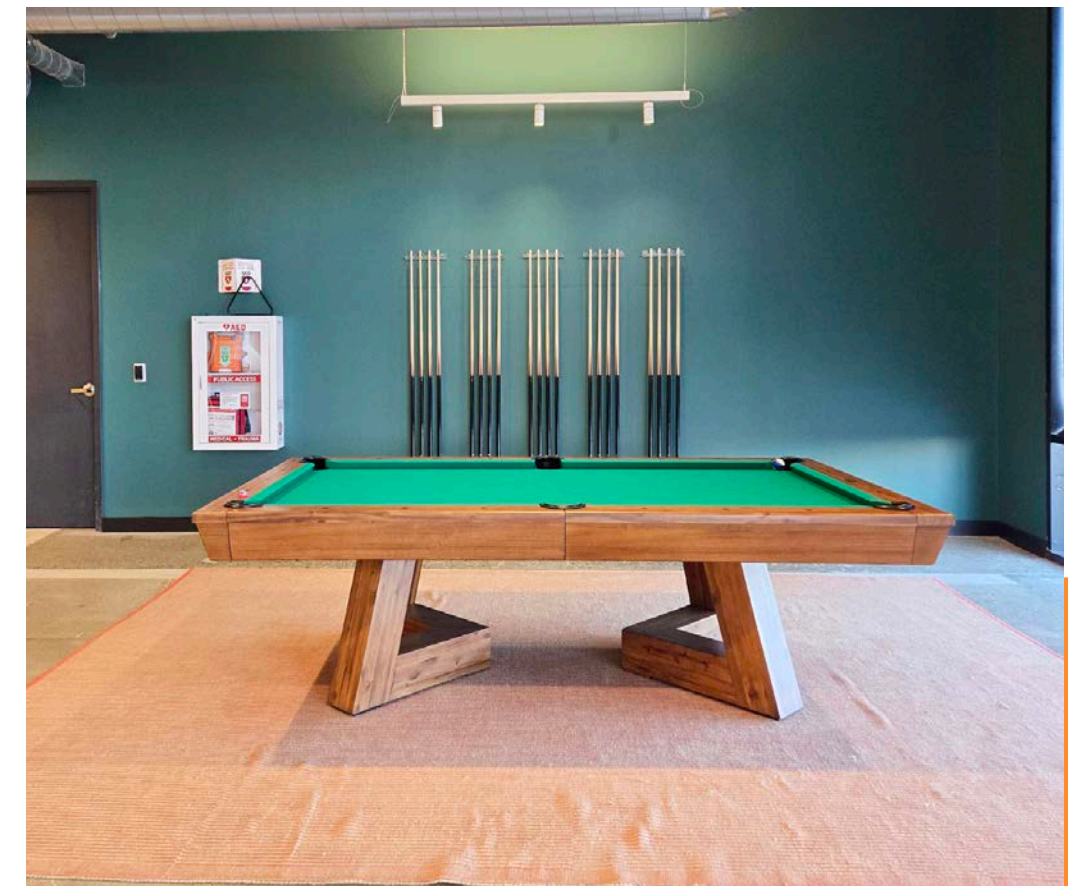
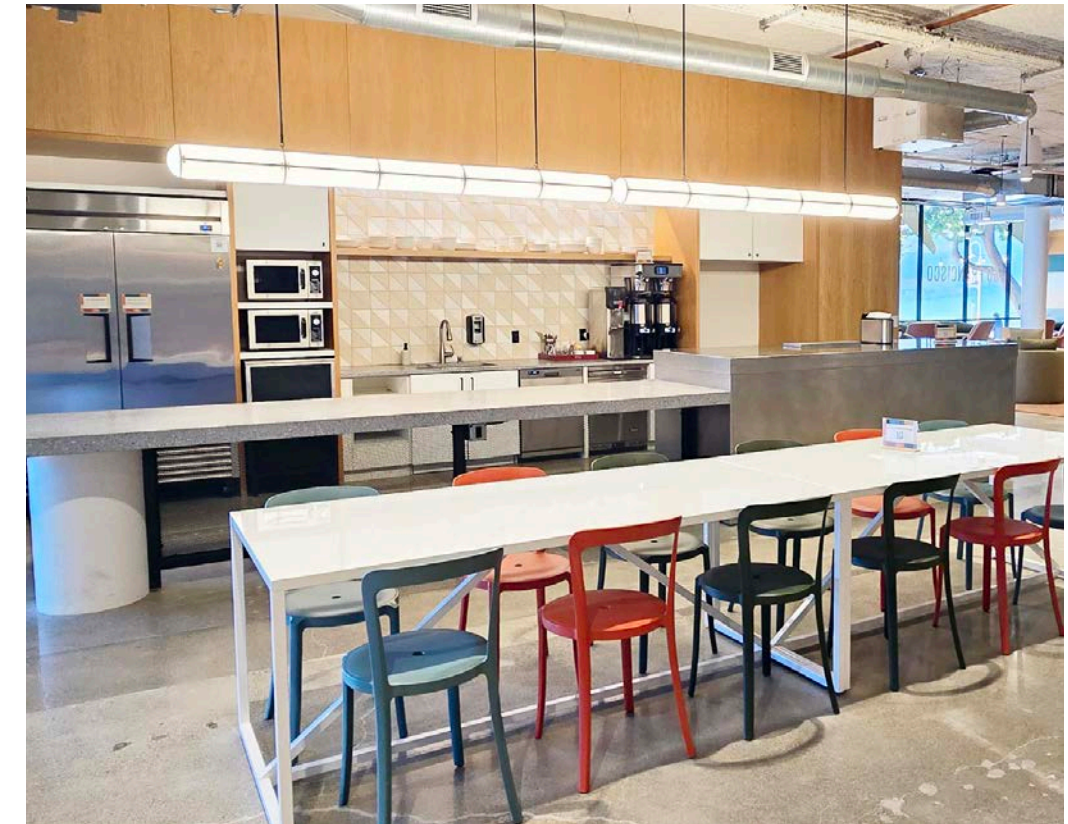
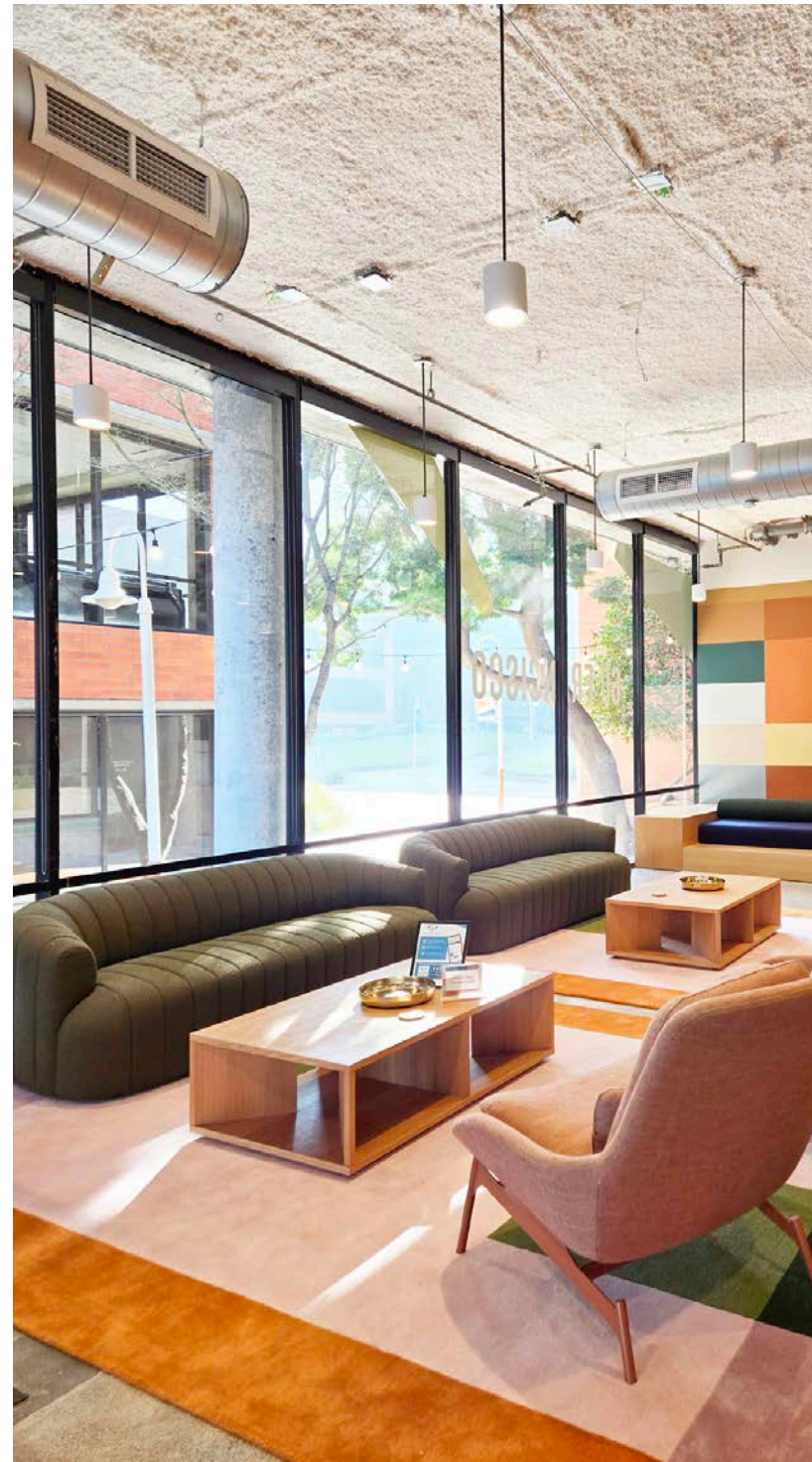


AMENITIES THAT ENERGIZE

Functioning as the amenity and event center for Waterfront Plaza, 60 Francisco connects tenants to curated experiences, shared spaces, and the larger Jamestown Northern Waterfront Portfolio.



Bookable event space

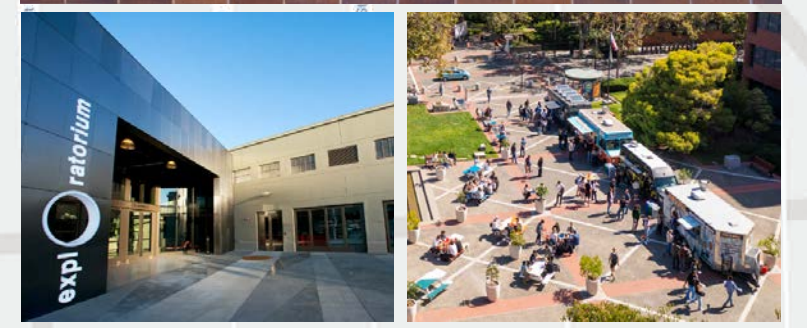


- LEVI'S PLAZA
- WATERFRONT PLAZA

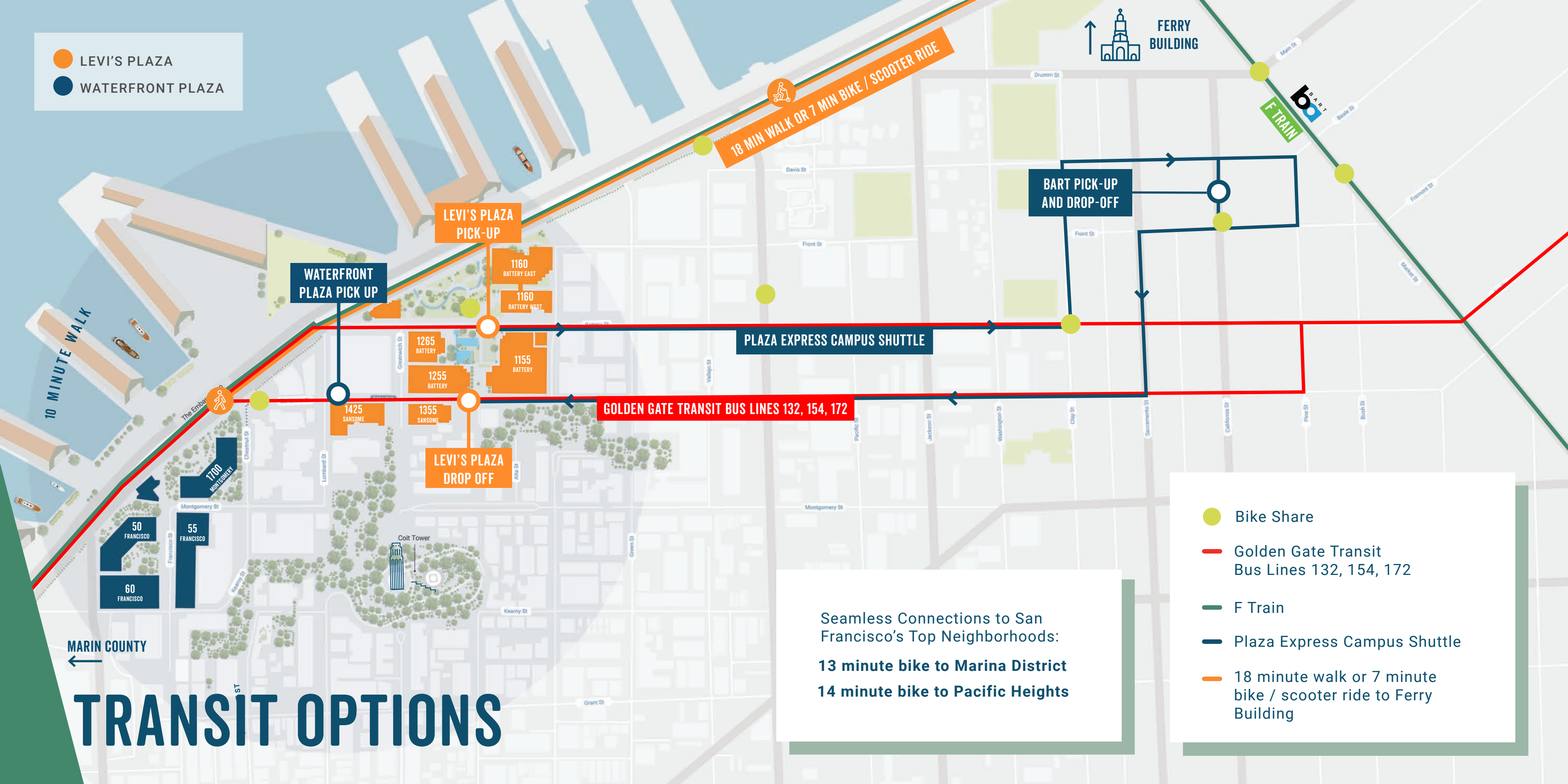


**EASILY ACCESSIBLE TO DINING,
WELLNESS, CULTURE, & SERVICES**

AMENITIES	
1	LULU FRESH CAFÉ AND PROVISIONS
2	SWEETGREEN OUTPOST
3	HILLSTONE
4	SF COSMETIC DENTAL GROUP
5	RJ'S MARKET
6	THE POP UP BY PORTER CAFE
7	HUCKLEBERRY BICYCLES
8	OFF THE GRID FOOD TRUCKS
9	COIT TOWER CAFE
10	XICA MEXICAN CUISINE
11	NEW RESTAURANT COMING SOON
12	THE BAY CLUB FITNESS
13	PIER 23 CAFE RESTAURANT & BAR
14	SEAGLASS RESTAURANT
15	THE EXPLORATORIUM
16	INDIE BEER & WINE BAR
17	MUSEO ITALO AMERICANO
18	GRUMPY'S
19	SUBWAY
20	THE WATERFRONT RESTAURANT
21	THE BATTERY
22	OLD SHIP SALON
23	KOKKARI ESTIATORIO GREEK RESTAURANT
24	ANDYTOWN COFFEE
25	SCULLERY CAFE



- LEVI'S PLAZA
- WATERFRONT PLAZA



TRANSIT OPTIONS

Seamless Connections to San Francisco's Top Neighborhoods:
13 minute bike to Marina District
14 minute bike to Pacific Heights

- Bike Share
- Golden Gate Transit Bus Lines 132, 154, 172
- F Train
- Plaza Express Campus Shuttle
- 18 minute walk or 7 minute bike / scooter ride to Ferry Building

ABOUT JAMESTOWN



Jamestown is a global real estate investment and management company with over 40 years of experience creating places that foster innovation and build community. As of June 30, 2025, Jamestown manages \$14.4 billion in assets across the U.S., Europe, and Latin America. Jamestown employs more than 600 people globally across 11 offices, including headquarters in Atlanta and Cologne. Through its vertically integrated platform, Jamestown brings a design-focused, hospitality approach to diverse product types, including retail, office, residential, mixed-use, and grocery-anchored shopping centers. Jamestown's current and previous projects include One Times Square and Chelsea Market in New York, Industry City in Brooklyn, Ponce City Market in Atlanta, and Groot Handelsgebouw in Rotterdam.



**JAMESTOWN OWNS
8 BAY AREA PROPERTIES
TOTALING 2.5M SF**

For more information, visit www.jamestownlp.com



WATERFRONT PLAZA

SAN FRANCISCO

WATERPLAZA.NET



Ross Robinson

Ross.Robinson@AvisonYoung.com
415.301.3184
CA License No. 01414104

Mark McGranahan

Mark.McGranahan@AvisonYoung.com
415.301.3167
CA License No. 01176912

Colton Hanley

Colton.Hanley@AvisonYoung.com
415.301.3181
CA License No. 02089768

Mark Anderson

Mark.Anderson@Cushwake.com
415.713.1014
CA License No. 01325399