



Keegan & Coppin
COMPANY, INC.

FOR LEASE

1101 COLLEGE AVENUE
SANTA ROSA, CA

OFFICE SPACE AVAILABLE

Go beyond broker.

PRESENTED BY:

BRIAN KEEGAN, PARTNER
LIC # 01809537 P: (707) 528-1400, EXT 249
BKEEGAN@KEEGANCOPPIN.COM

JUSTIN LAWSON, AGENT
LIC # 02409058 P: (707) 528-1400, EXT. 204
JLAWSON@KEEGANCOPPIN.COM



PROPERTY DETAILS



1101 COLLEGE AVENUE
SANTA ROSA, CA

**OFFICE SPACE
FOR LEASE**

PROPERTY INFORMATION

- Located on a prominent corner of College Avenue
- Elevator Served
- Good Natural Light
- Strategic Location
- Easy Freeway Access
- On-site parking available

LEASE TERMS

Rate

Negotiable

Terms

3 - 5 year lease term preferred

OFFICE SPACE	DESCRIPTION
Suite 110: 868+/- sq ft	1 Private office, large open space.
Suite 215: 1,208+/- sq ft	2nd floor, two private office, kitchen, storage area.



PRESENTED BY:

BRIAN KEEGAN, PARTNER
KEEGAN & COPPIN CO., INC.
LIC # 01809537 (707) 528-1400, EXT 249
BKEEGAN@KEEGANCOPPIN.COM

JUSTIN LAWSON, AGENT
KEEGAN & COPPIN CO., INC.
LIC # 02409058 P: (707) 528-1400, EXT. 204
JLAWSON@KEEGANCOPPIN.COM

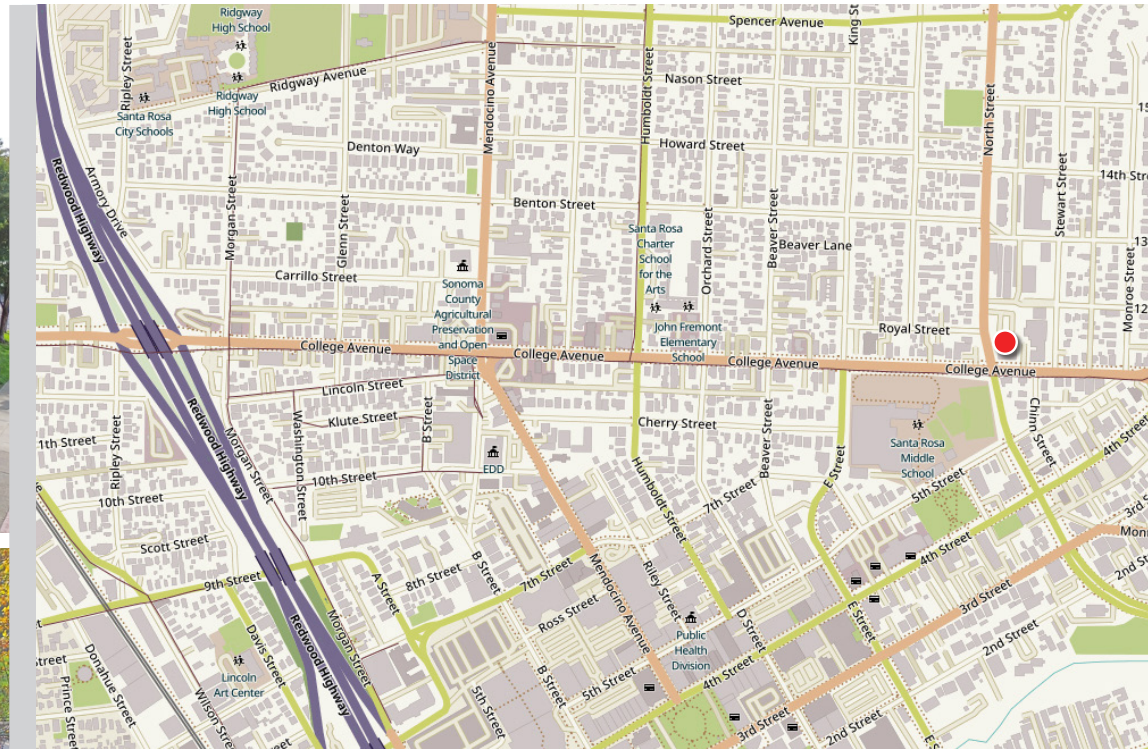


AREA DESCRIPTION



1101 COLLEGE AVENUE
SANTA ROSA, CA

OFFICE SPACE FOR LEASE



DESCRIPTION OF AREA

Midtown Santa Rosa, situated close to the intersection of Fourth Street and College Avenue. High traffic count.

NEARBY AMENITIES

- Restaurants
- Shopping
- Close to Downtown Santa Rosa

TRANSPORTATION ACCESS

- Easy access to Highway 101
- Public transportation

PRESENTED BY:

BRIAN KEEGAN, PARTNER
KEEGAN & COPPIN CO., INC.
LIC # 01809537 (707) 528-1400, EXT 249
BKEEGAN@KEEGANCOPPIN.COM

JUSTIN LAWSON, AGENT
KEEGAN & COPPIN CO., INC.
LIC # 02409058 P: (707) 528-1400, EXT. 204
JLAWSON@KEEGANCOPPIN.COM



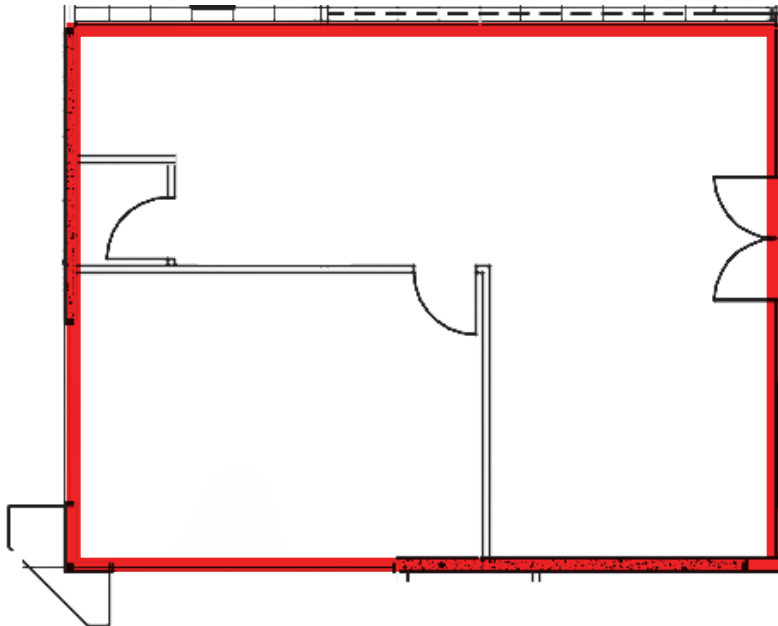
SUITE 110 FLOOR PLAN



1101 COLLEGE AVENUE
SANTA ROSA, CA

**OFFICE SPACE
FOR LEASE**

SUITE 110
868+/- SF



PRESENTED BY:

BRIAN KEEGAN, PARTNER
KEEGAN & COPPIN CO., INC.
LIC # 01809537 (707) 528-1400, EXT 249
BKEEGAN@KEEGANCOPPIN.COM

JUSTIN LAWSON, AGENT
KEEGAN & COPPIN CO., INC.
LIC # 02409058 P: (707) 528-1400, EXT. 204
JLAWSON@KEEGANCOPPIN.COM



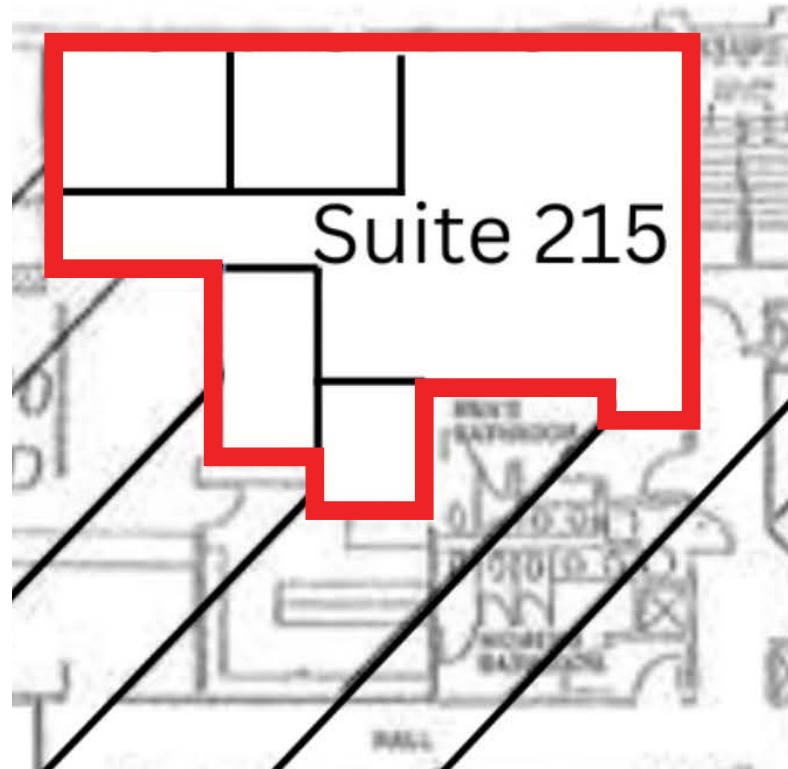
SUITE 215 FLOOR PLAN



1101 COLLEGE AVENUE
SANTA ROSA, CA

OFFICE SPACE
FOR LEASE

SUITE 215
1,208+/- SF



PRESENTED BY:

BRIAN KEEGAN, PARTNER
KEEGAN & COPPIN CO., INC.
LIC # 01809537 (707) 528-1400, EXT 249
BKEEGAN@KEEGANCOPPIN.COM

JUSTIN LAWSON, AGENT
KEEGAN & COPPIN CO., INC.
LIC # 02409058 P: (707) 528-1400, EXT. 204
JLAWSON@KEEGANCOPPIN.COM

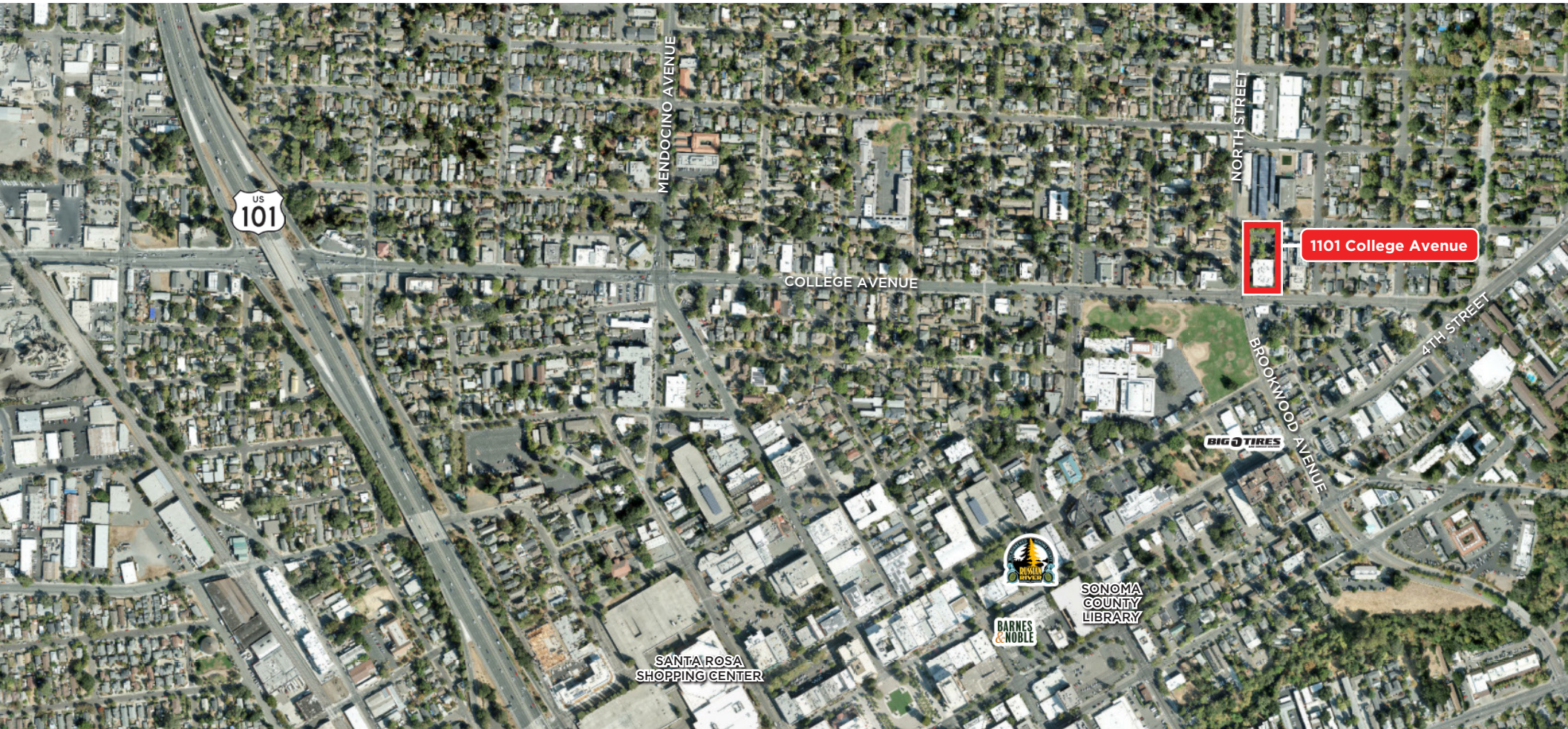


LOCATION MAP



1101 COLLEGE AVENUE
SANTA ROSA, CA

**OFFICE SPACE
FOR LEASE**



Keegan & Coppin Co., Inc.
1355 North Dutton Avenue
Santa Rosa, CA 95401
www.keegancoppin.com
(707) 528-1400

The above information, while not guaranteed, has been secured from sources we believe to be reliable. Submitted subject to error, change or withdrawal. An interested party should verify the status of the property and the information herein.

REPRESENTED BY:

BRIAN KEEGAN, PARTNER
LIC # 01809537 (707) 528-1400, EXT 249
BKEEGAN@KEEGANCOPPIN.COM

JUSTIN LAWSON, AGENT
LIC # 02409058 P: (707) 528-1400, EXT. 204
JLAWSON@KEEGANCOPPIN.COM