



Prime Upper West Side Retail Opportunity

Available Immediately
3,650 SF Ground Floor Retail
All Uses Considered
Divisions of 1,000 SF and Greater Accepted
(See Floorplans Below)

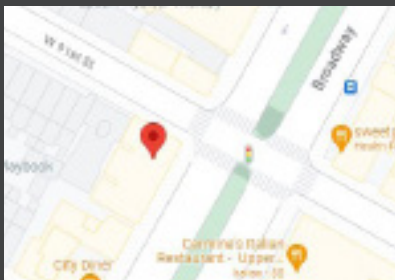
RENT:
Upon Request

APPROXIMATE SIZE:
3,650 SF - Ground Floor
3,650 SF - Basement

FRONTAGE:
80' on Broadway

CEILING HEIGHT:
10'

POSSESSION:
Arranged



Notable Neighbors:

Gyu Kaku

Blank Street Coffee

Sweetgreen

Petco

City Diner

Ollie's To Go

Key Food

Murray's Sturgeon

Joe and the Juice

Blue Bottle Coffee

Dagon

Carmine's

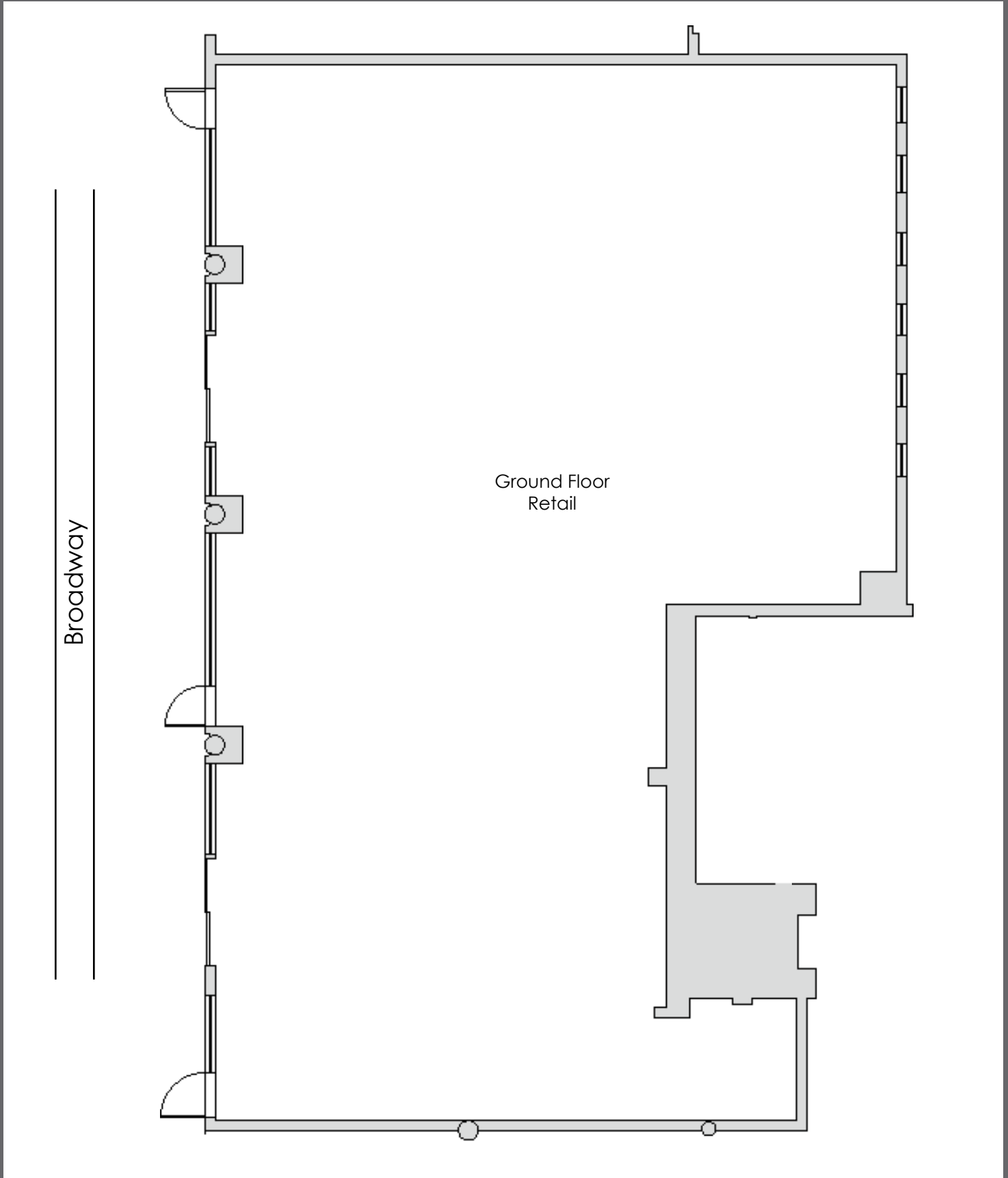
Chase Bank

Frame Cafe

By the Way Bakery

Starbucks

For inquiries contact Zach Levine: 646.943.3125 / Zach@iconrealtymgmt.com



Divisions of 1,000 SF and Greater Accepted

