

# LEASE BROCHURE

## 2300 CARLING AVENUE MINI SUITES



# 2300 CARLING AVENUE

Ottawa, ON, K2B 7G1

## EXECUTIVE SUMMARY



### PROPERTY OVERVIEW

Medical/office mini suites for lease ranging from 540 SF up to 1,444 SF with flexible lease terms available. Ideal for single practitioners or a satellite west-end location. Located just off the intersection of Carling and Woodroffe Avenue, each suite offers a flexible layout with configurations that include private offices, open work areas, or a combination of both. This unique and iconic building provides a bright, welcoming reception area and a shared kitchen ideal for tenant collaboration. Accessible site with elevator access to the second floor. 3 PHASE / 600 AMP / 600 VOLT electrical power, and free onsite parking. Across from Carlingwood Shopping Centre, with great access to Highway 417 and public transit, including the future Lincoln Fields LRT station. Ideal users include medical practitioners, health professionals, beauty and wellness users, physiotherapy or psychology practices, and other specialized service-based or office businesses seeking high-quality, professional space with flexible lease terms.

### PROPERTY HIGHLIGHTS

- Highly accessible by transit
- Available Immediately
- Ideally situated 7.1km from Queensway Carleton Hospital and 6.5km from the Ottawa Hospital Civic Campus.
- Many walkable amenities
- Ample onsite parking

### OFFERING SUMMARY

Available SF:	11,600 SF (Approximately)
Net Rent:	\$17.00 SF/yr (NNN)
Additional Rent:	\$14 SF/yr (Approximately)
Zoning:	AM10



[www.ZinatiRealty.com](http://www.ZinatiRealty.com)



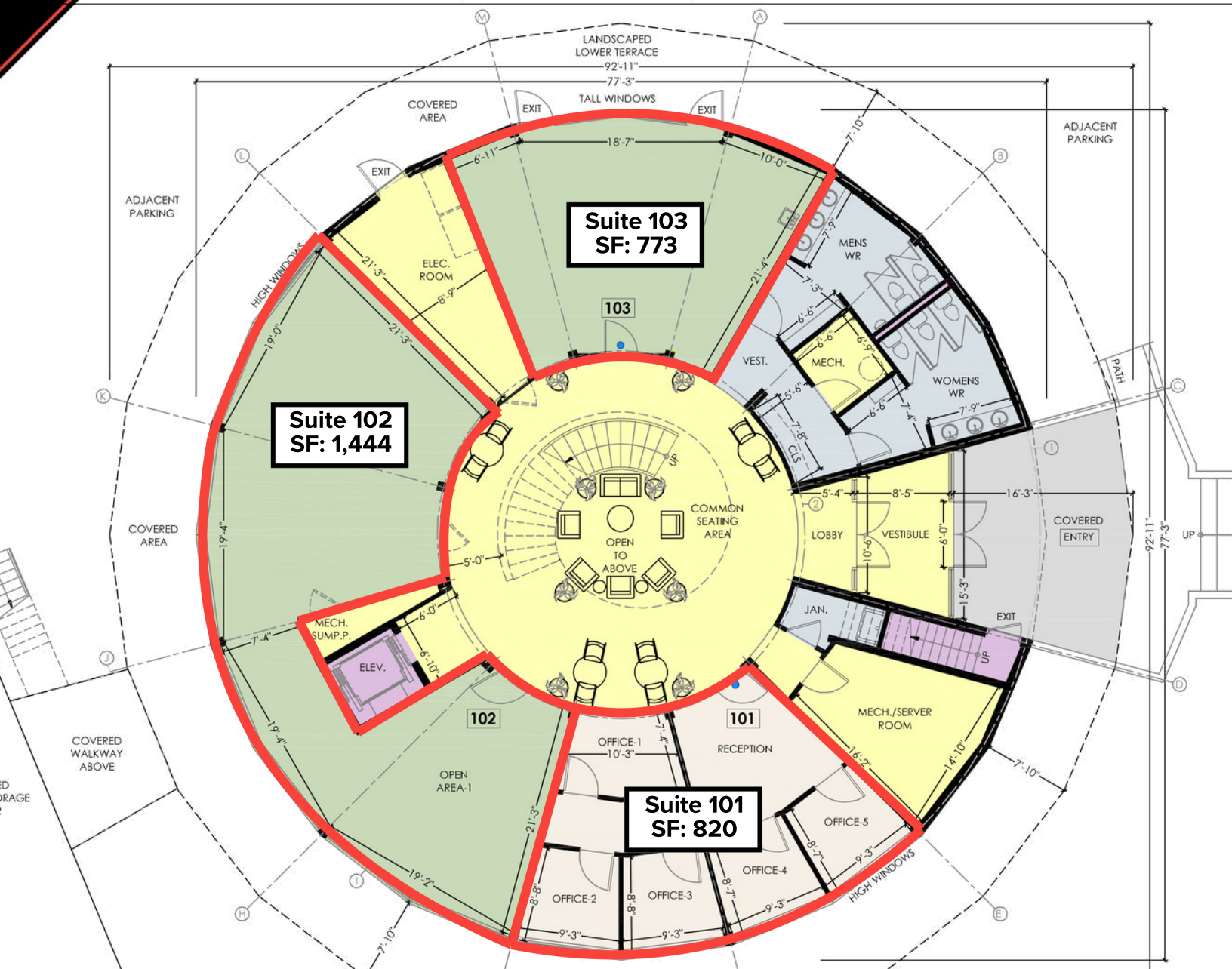
[info@zinatirealty.com](mailto:info@zinatirealty.com)



613-853-4106

## FLOOR PLANS

### 2300 CARLING AVENUE FIRST FLOOR



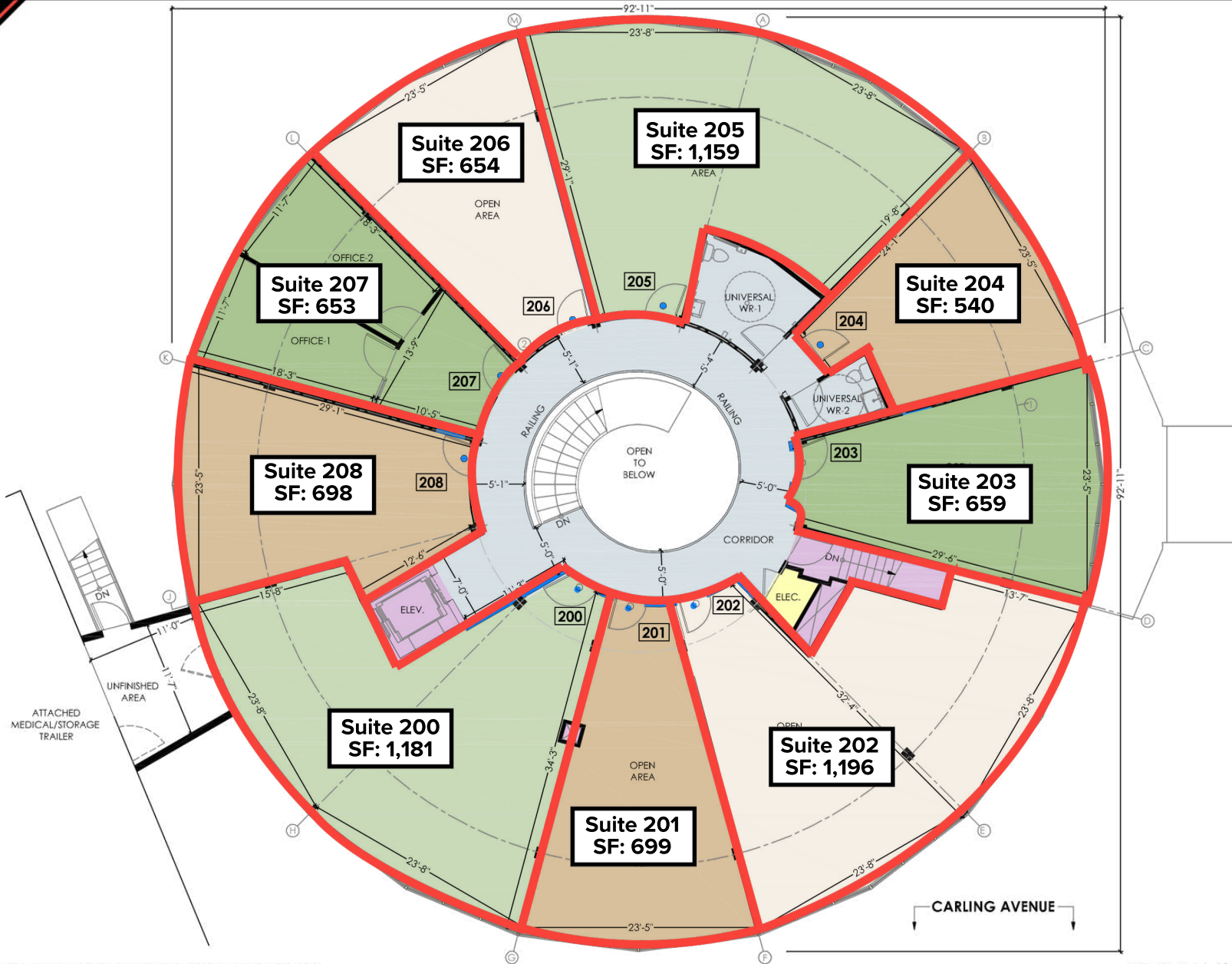
# 2300 CARLING AVENUE

Ottawa, ON, K2B 7G1

## FLOOR PLANS

### 2300 CARLING AVENUE SECOND FLOOR

2300 CARLING AVENUE, OTTAWA, ON  
(PROPOSED AREA ANALYSIS PLAN)



PROVIDED BY OWNER/SHADED AREAS ARE PROPOSED LEASING AREAS ONLY

PREPARED BY: Echo3G



[www.ZinatiRealty.com](http://www.ZinatiRealty.com)



[info@zinatirealty.com](mailto:info@zinatirealty.com)

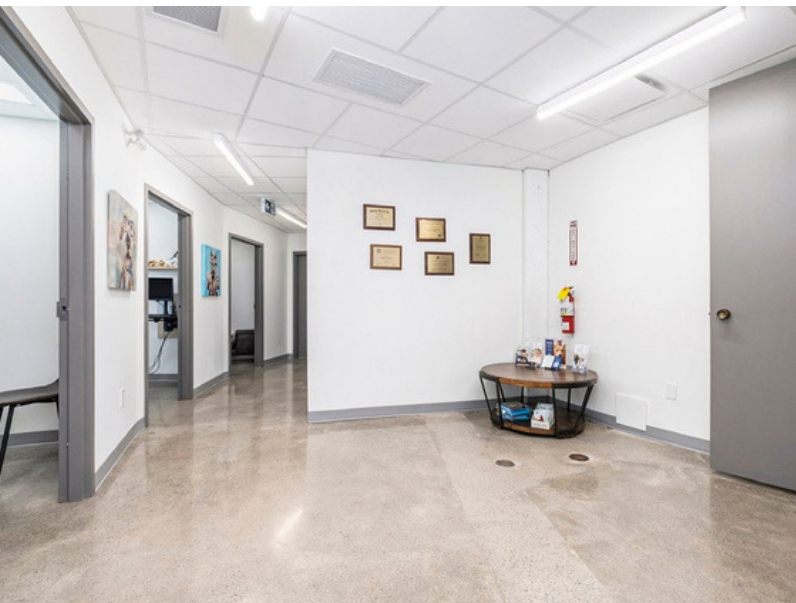
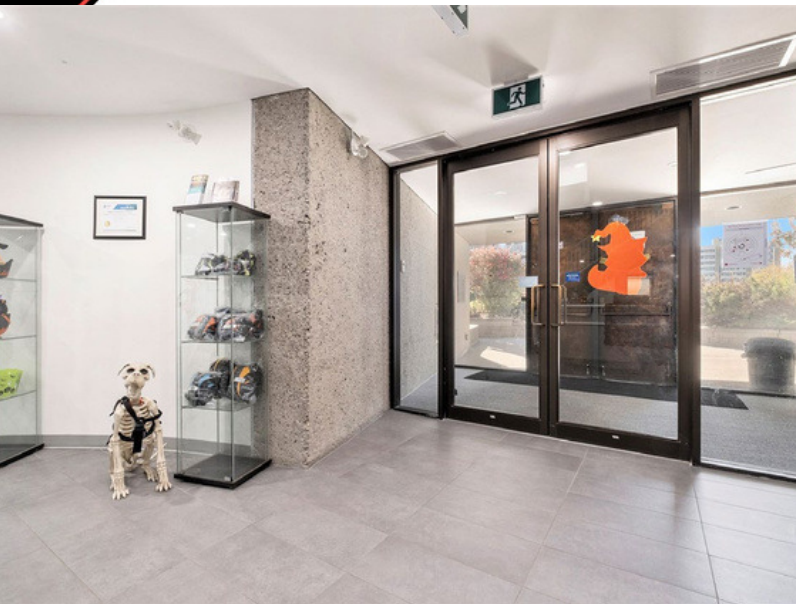


613-853-4106

**2300 CARLING AVENUE**

Ottawa, ON, K2B 7G1

## PHOTOS



[www.ZinatiRealty.com](http://www.ZinatiRealty.com)



[info@zinatirealty.com](mailto:info@zinatirealty.com)

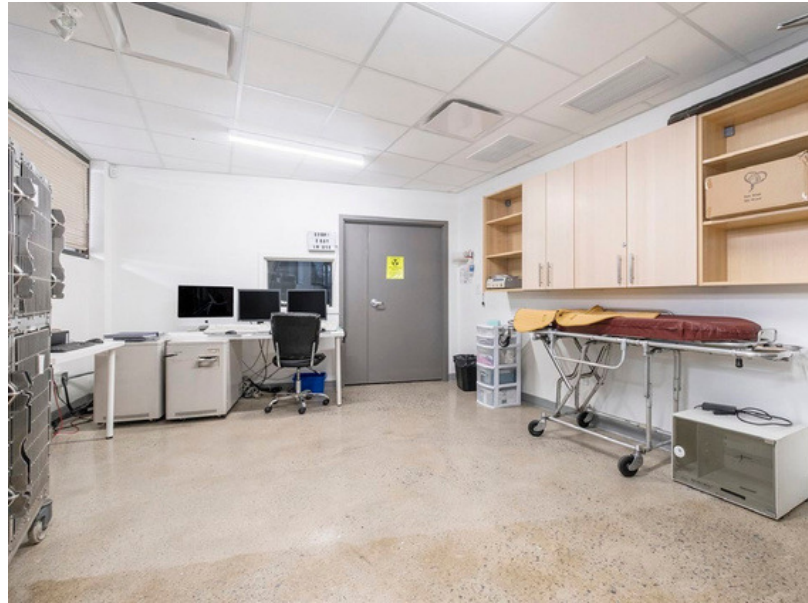


613-853-4106

**2300 CARLING AVENUE**

Ottawa, ON, K2B 7G1

**PHOTOS**



[www.ZinatiRealty.com](http://www.ZinatiRealty.com)



[info@zinatirealty.com](mailto:info@zinatirealty.com)



613-853-4106

**2300 CARLING AVENUE**

Ottawa, ON, K2B 7G1

**PHOTOS**



[www.ZinatiRealty.com](http://www.ZinatiRealty.com)



[info@zinatirealty.com](mailto:info@zinatirealty.com)

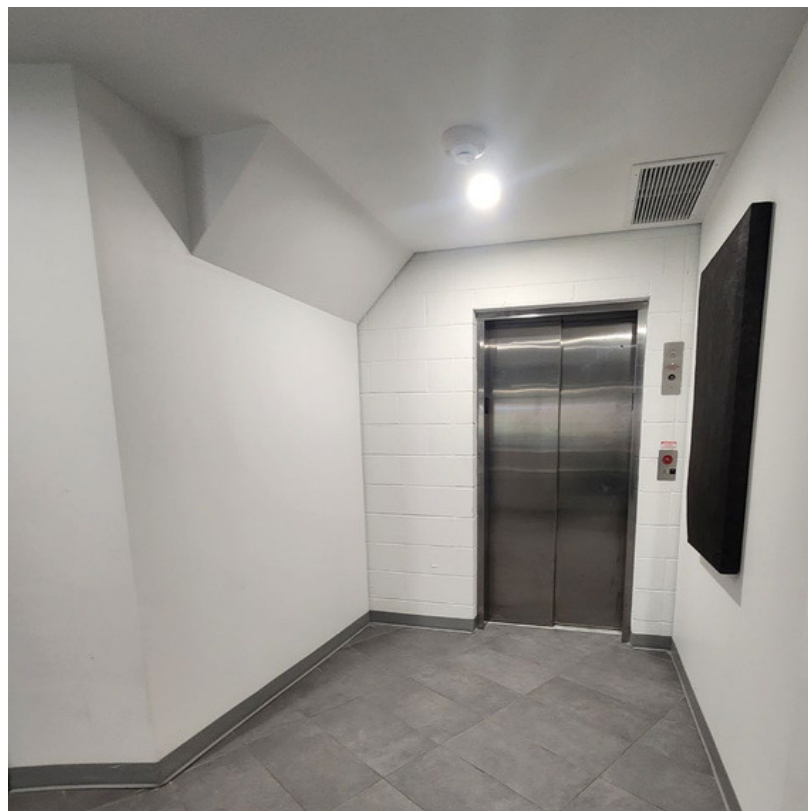


613-853-4106

**2300 CARLING AVENUE**

Ottawa, ON, K2B 7G1

**PHOTOS**



[www.ZinatiRealty.com](http://www.ZinatiRealty.com)



[info@zinatirealty.com](mailto:info@zinatirealty.com)



613-853-4106

# 2300 CARLING AVENUE

Ottawa, ON, K2B 7G1

## RETAILER MAP



[www.ZinatiRealty.com](http://www.ZinatiRealty.com)



[info@zinatirealty.com](mailto:info@zinatirealty.com)



613-853-4106

# TRUST ZINATI REALTY

For more information or to book a tour,  
please contact one of the representatives below.

## **JOHN ZINATI**

613-880-4106

[john@zinatirealty.com](mailto:john@zinatirealty.com)

## **LIZ POWELL**

613-915-5496

[liz@zinatirealty.com](mailto:liz@zinatirealty.com)

## **Zinati Realty Commercial Brokerage**

92 CentrepoinTE Drive

Ottawa, ON, K2G 6B1

613-853-4106

[info@zinatirealty.com](mailto:info@zinatirealty.com)