

Charming Downtown Commercial Office Building For Lease

-- -- **\$0.00**
SQUARE FEET RENT / SF RENT

(707) 939-2024



PROPERTY ADDRESS

445 2nd Street West
Sonoma, CA 95476

COMMERCIAL TYPE: **Office** AVAILABLE: **3/1/26**

DESCRIPTION

Located just minutes from downtown Sonoma, this well-appointed three-room office suite offers an ideal setting for a variety of professional uses. The layout provides flexibility for private offices, treatment rooms, meeting space, or collaborative work areas.

The space includes:

- Three separate office rooms
- Private bathroom
- Dedicated sink area
- Additional storage space
- Private outdoor patio area
- Three on-site parking spaces

With close proximity to downtown Sonoma, the Plaza, restaurants, and local businesses, this location offers both convenience and accessibility for clients and staff alike. The private patio adds a rare touch of outdoor space—perfect for breaks or informal meetings.

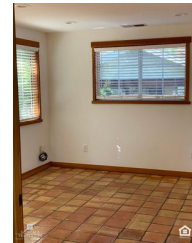
For more information, please call Sonoma Properties at (707) 939-2024.

Sonoma Properties
DRE License #01931046

*All digitally altered photos are marked as being digitally altered. Any others are the original, unaltered photos.

RENTAL TERMS

Rent	\$0
Security Deposit	\$2,300
Application Fee	\$35



View this listing online:

