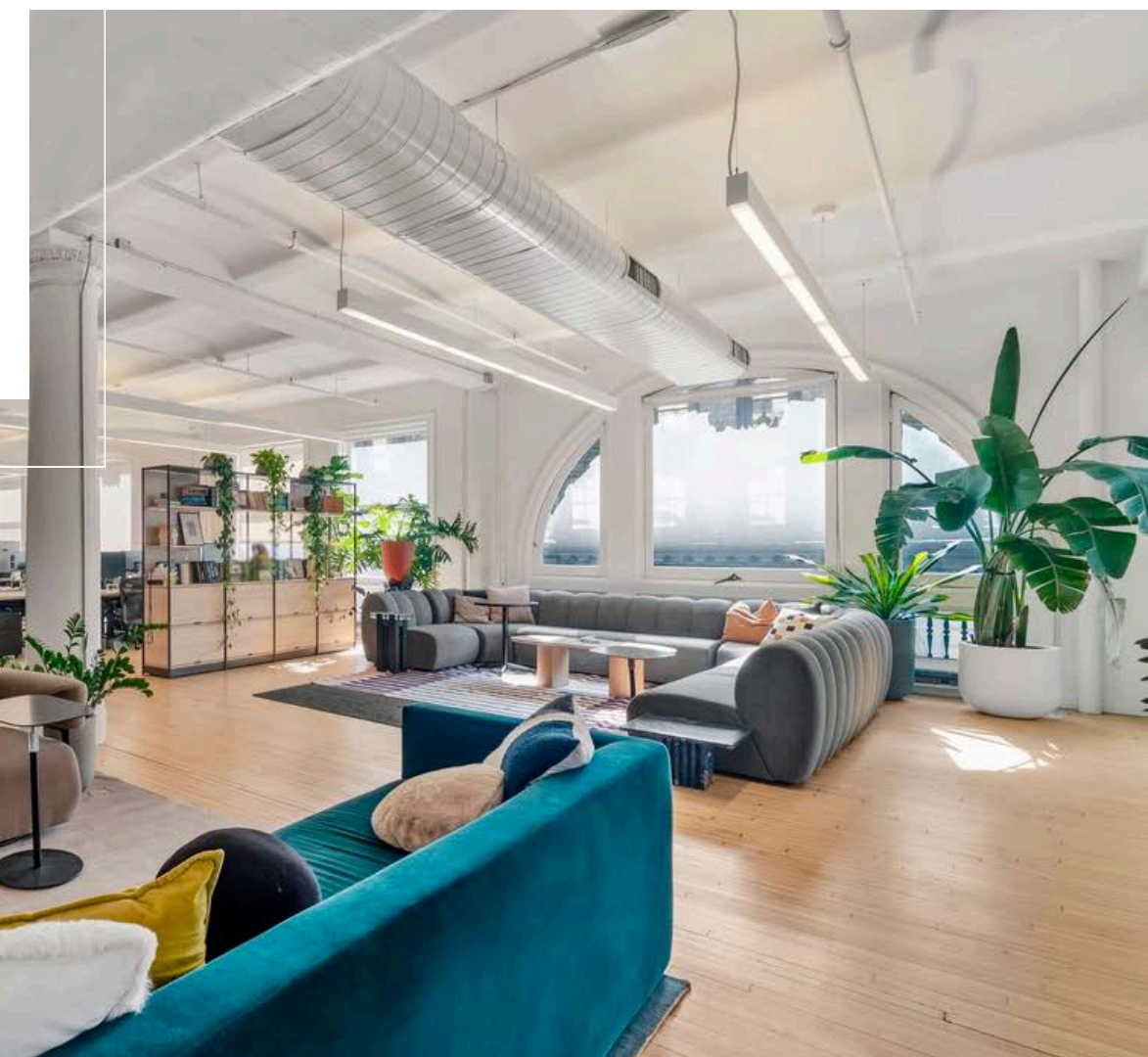
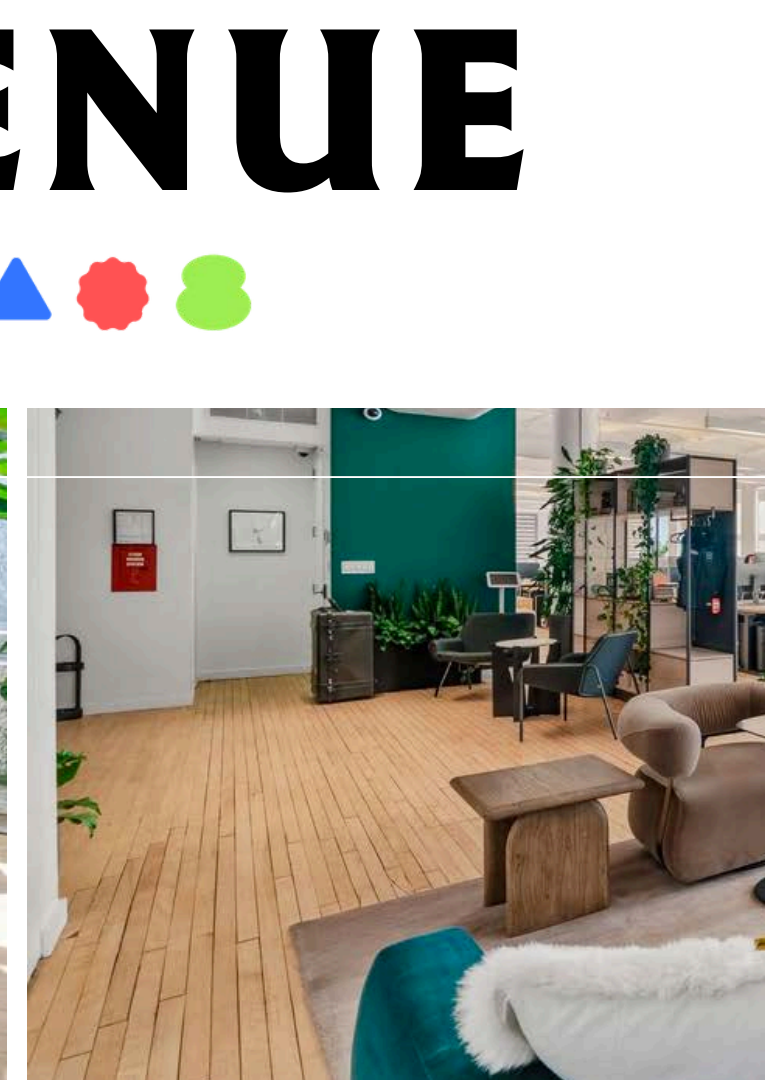
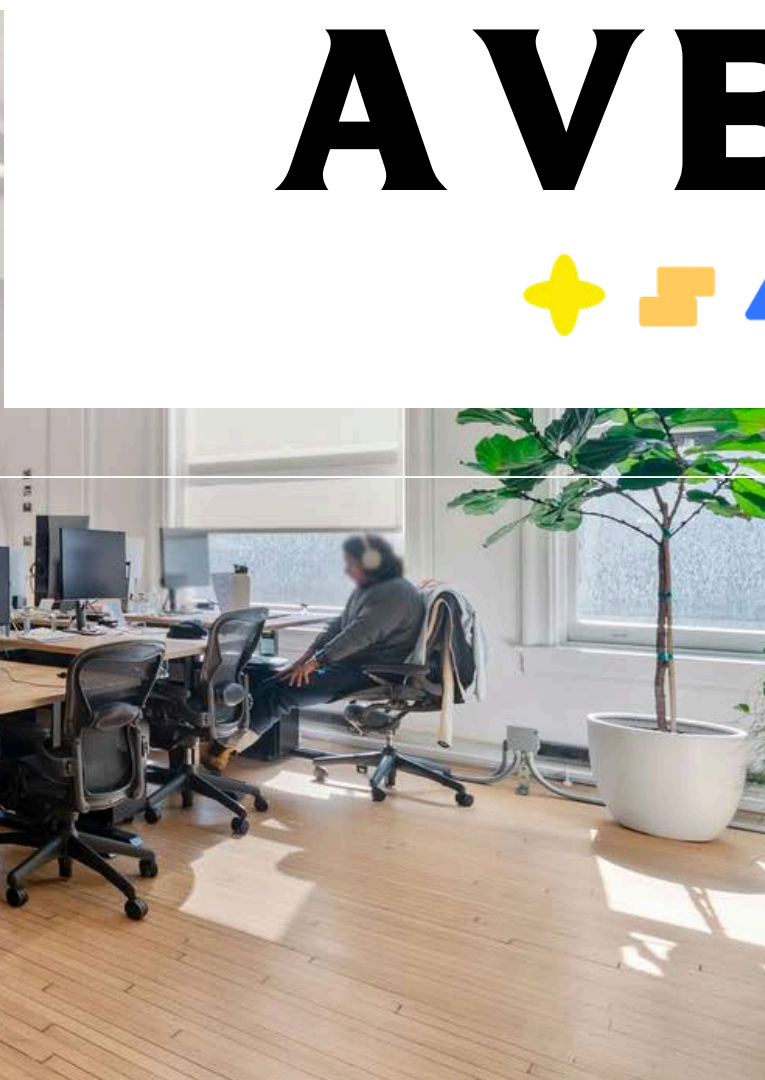
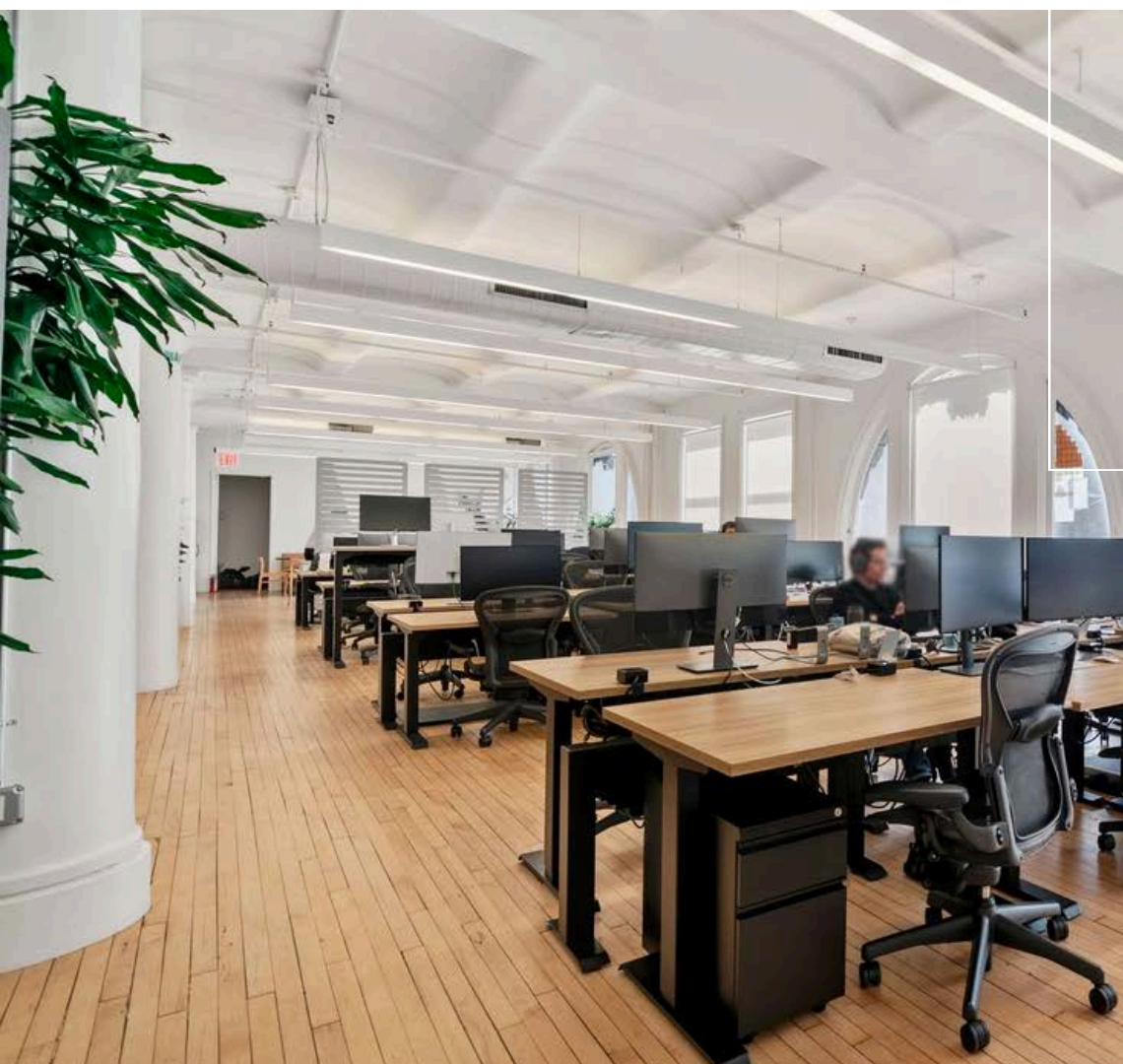
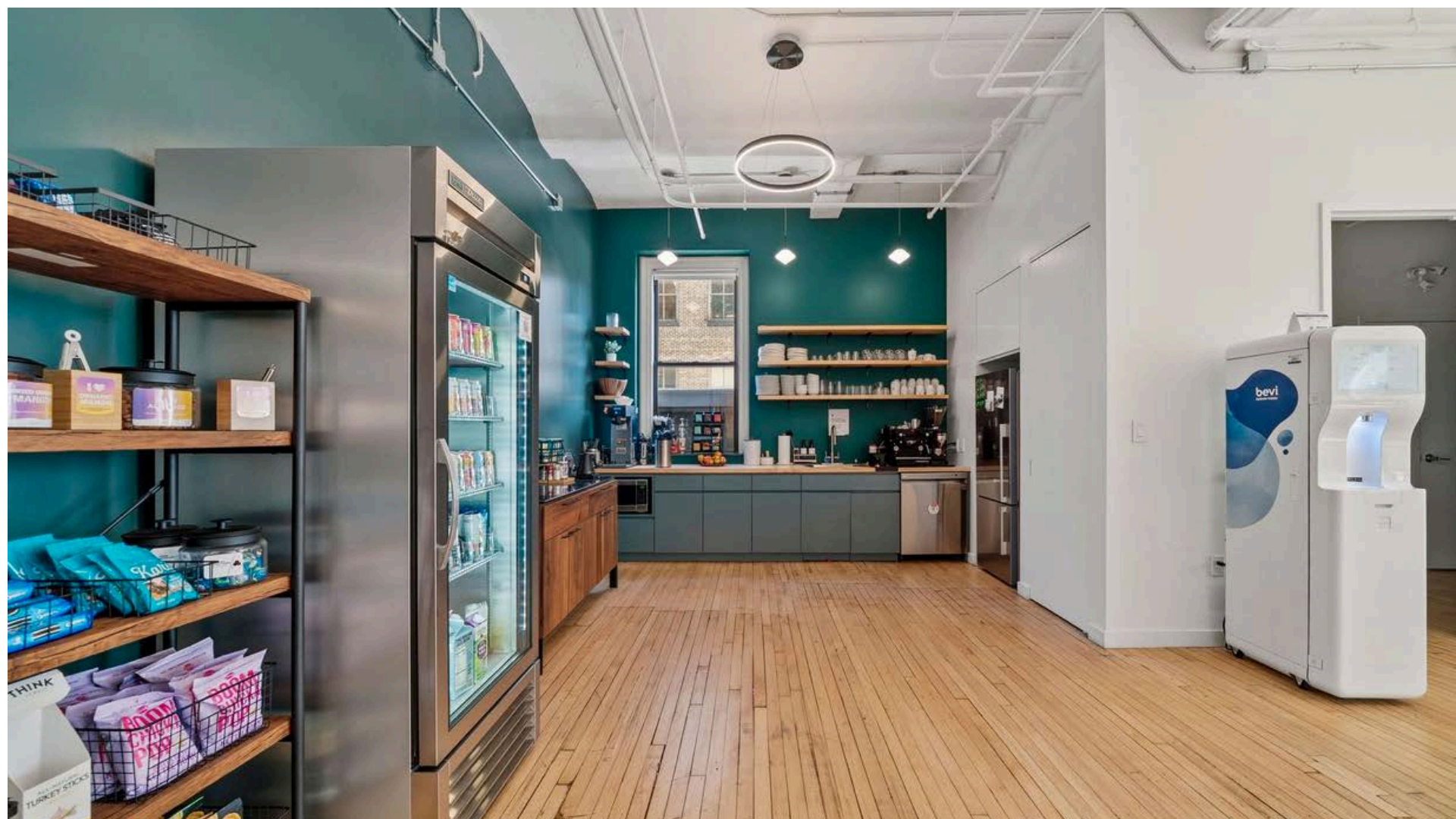


nomad
**119 FIFTH
AVENUE**





FLOOR PLAN

119 FIFTH AVENUE

BETWEEN 19TH & 20TH STREETS

ENTIRE 6TH FLOOR

8,750 SF

OPEN SEATING

WORKSTATIONS: ~50
RECEPTION AREA: 1

SUPPORT

WET PANTRY: 1
LOUNGE: 2
PHONEBOOTHS: 3

DESCRIPTION

- Steps from Union Square
- Open Layout
- Arched Windows throughout the space
- Hardwood Flooring
- Rounded Columns

COLLABORATION SPACE

OFFICE/MEETING ROOMS: 6
CONFERENCE ROOMS: 1

\$68,500 / MONTH





119 FIFTH AVENUE

119 Fifth Avenue is a historic eight-story office building in the heart of the Flatiron District, originally constructed in 1906 with elegant neo-Renaissance architecture. It offers approximately 56,700 square feet of boutique office space, featuring upgraded interiors, a modernized lobby, and efficient full-floor layouts. Tenants benefit from high ceilings, excellent natural light, and a prime location just steps from Madison Square Park and Union Square. Nearby subway access includes the 4/5/6/L/N/Q/R/W lines at Union Square and the N/R at 23rd Street.

