

CENTRAL SAN JOSE, CA

INDUSTRIAL SPACE FOR LEASE

394 UMBARGER RD, SAN JOSE, CA



Central San Jose Industrial Space for Lease

±6,280 SF, divisible to ±2,890 SF

Nicely appointed end-cap industrial design and fabrication facility

Large fully conditioned manufacturing & assembly area

Parking ratio 1.84/1,000

200 amps at 120/208 volts

Fully sprinklered

Two (2) grade level 12'x14' doors

±13'9" - ±16' clear height

Call agents for pricing

JOHN KOVALESKI
408.588.2370
john.kovaleski@kidder.com
LIC N° 00828965

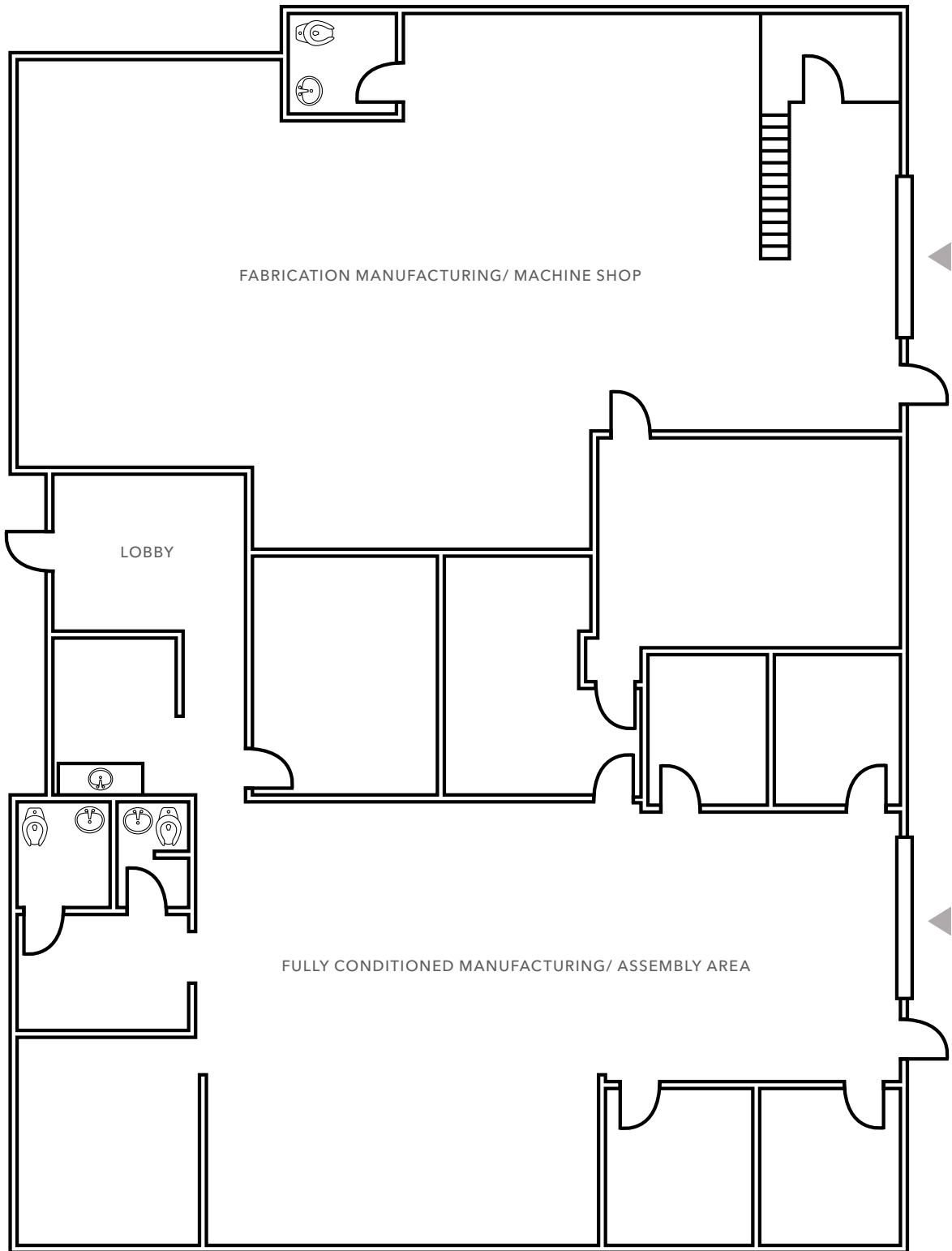
DAVID BUCHHOLZ, SIOR
408.588.2372
david.buchholz@kidder.com
LIC N° 01100075

ALEX KOVALESKI
408.588.2371
alex.kovaleski@kidder.com
LIC N° 02081540

KIDDER.COM

This information supplied herein is from sources we deem reliable. It is provided without any representation, warranty, or guarantee, expressed or implied as to its accuracy. Prospective Buyer or Tenant should conduct an independent investigation and verification of all matters deemed to be material, including, but not limited to, statements of income and expenses. Consult your attorney, accountant, or other professional advisor.





▲ Roll-Up Door

FLOOR PLAN NOT TO SCALE

KIDDER.COM

This information supplied herein is from sources we deem reliable. It is provided without any representation, warranty, or guarantee, expressed or implied as to its accuracy. Prospective Buyer or Tenant should conduct an independent investigation and verification of all matters deemed to be material, including, but not limited to, statements of income and expenses. Consult your attorney, accountant, or other professional advisor.

