

405

405 NORTH N ST.
LOMPOC, CA

FOR LEASE



TOM DAVIDSON

tdavidson@lee-associates.com

D 805.588.7777

CalDRE: #0595846

LEE & ASSOCIATES

COMMERCIAL REAL ESTATE SERVICES
CENTRAL CALIFORNIA

All information furnished regarding property for sale, rental or financing is from sources deemed reliable, but no warranty or representation is made to the accuracy thereof and same is submitted to errors, omissions, change of price, rental or other conditions prior to sale, lease or financing or withdrawal without notice. No liability of any kind is to be imposed on the broker herein.

PROPERTY OVERVIEW

Nice, clean, recently refurbished industrial unit conveniently located just off Laurel Avenue. It has a roll-up door and a single restroom. Also has a secure, fenced yard/parking area.

Lease Rate: \$3,000/Mo. Gross

Available SF: 2,100

Lot Size: 6,969 SF

Term: Negotiable

Roll Up Doors: 1 @ 8'x10'

Power: 200 amps,
3 Phase

Ceiling Height: 10 ft.

Restrooms: 1

Zoning: M

APN: 089-221-008



TOM DAVIDSON

tdavidson@lee-associates.com

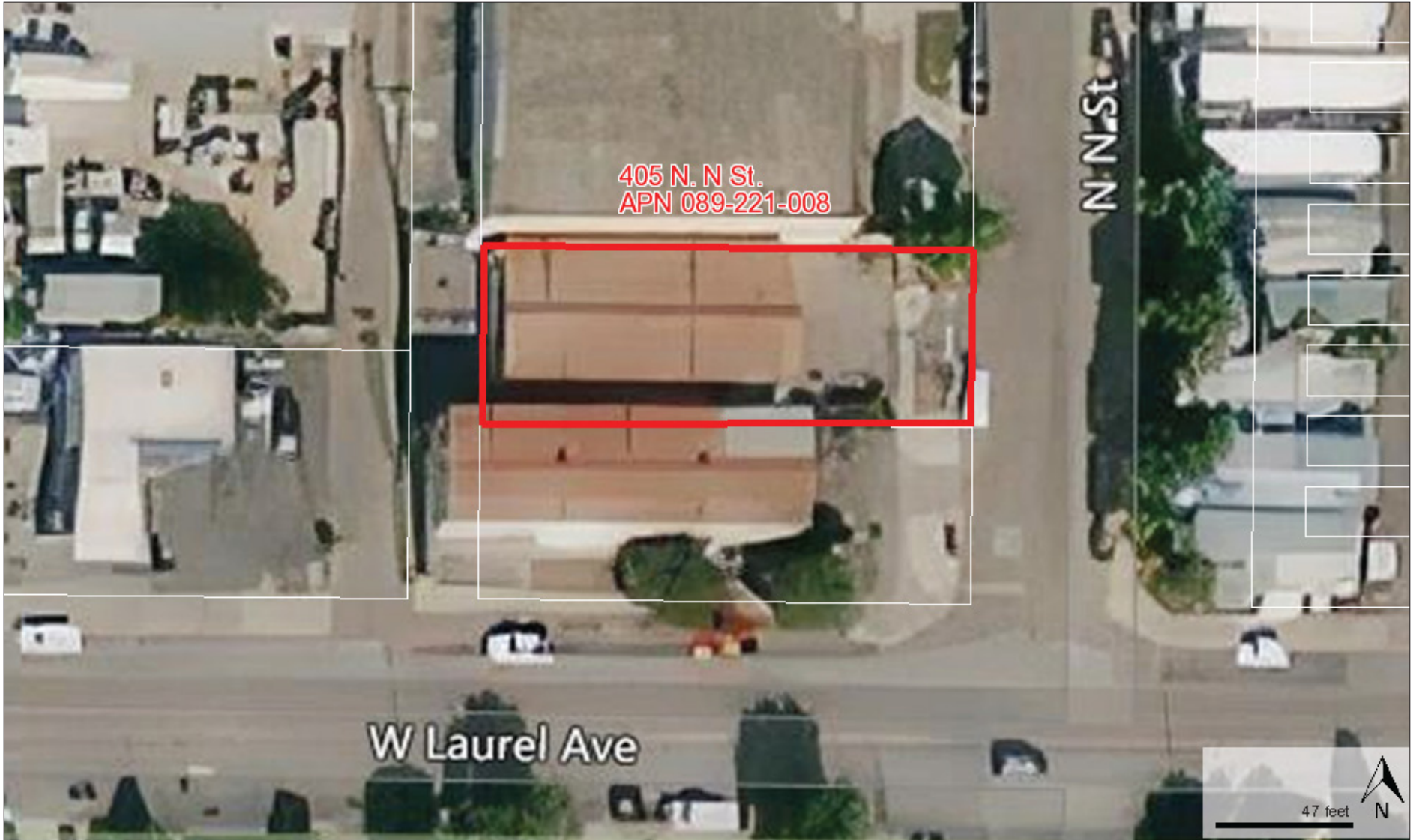
D 805.588.7777

CalDRE: #0595846

All information furnished regarding property for sale, rental or financing is from sources deemed reliable, but no warranty or representation is made to the accuracy thereof and same is submitted to errors, omissions, change of price, rental or other conditions prior to sale, lease or financing or withdrawal without notice. No liability of any kind is to be imposed on the broker herein.

LEE & ASSOCIATES
COMMERCIAL REAL ESTATE SERVICES
CENTRAL CALIFORNIA

AERIAL



All information furnished regarding property for sale, rental or financing is from sources deemed reliable, but no warranty or representation is made to the accuracy thereof and same is submitted to errors, omissions, change of price, rental or other conditions prior to sale, lease or financing or withdrawal without notice. No liability of any kind is to be imposed on the broker herein.



COMMERCIAL REAL ESTATE SERVICES

LOCAL EXPERTISE. INTERNATIONAL REACH. WORLD CLASS.

Lee & Associates, the largest broker-owned firm in North America, has been providing seamless, consistent execution and value-driven market-to-market services for our clients since 1979.

Our real estate services are tailored to exceed the needs of our local, national, and international clients by combining the latest technology, resources, and market intelligence with over 40 years of expertise to optimize results.

TOM DAVIDSON

805.588.7777

tdavidson@lee-associates.com

License ID# 0595846

Central California, Inc. -
Lee & Associates
Corporate ID #02215506
A Member of the Lee & Associates
Group of Companies
5401 Business Park South, Suite 122 & 123
Bakersfield, CA 93309

All information furnished regarding property for sale, rental or financing is from sources deemed reliable, but no warranty or representation is made to the accuracy thereof and same is submitted to errors, omissions, change of price, rental or other conditions prior to sale, lease or financing or withdrawal without notice. No liability of any kind is to be imposed on the broker herein.

2990 Grand Avenue, Suite D | Los Olivos, CA 93441 | 805.962.6700 | lee-associates.com/centralca

