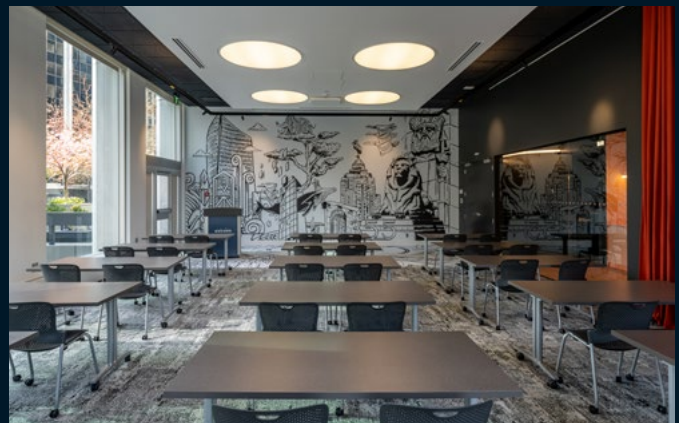
 **JLL** SEE A BRIGHTER WAY

For Sublease

Guinness Tower
1055 West Hastings Street
Suite 2150 - 5,808 s.f.

BUILDING & AMENITIES

Guinness Tower is prominently located in the heart of the Downtown Core and benefits from unparalleled amenities as part of the Oxford Place complex, including a fitness facility with change rooms that include lockers, laundry service and saunas, multiple bike storage facilities with laundry, conference rooms, a climbing wall, a corporate concierge and an abundance of on-site food and beverage options. The building is also a short walk from the Seawall, Burrard SkyTrain Station and Waterfront Station.



SALIENT DETAILS



SUITE 2150
5,808 s.f.



AVAILABILITY
Immediately



SUBLEASE TERM
May 30, 2028



BASIC RENT
Contact listing agents



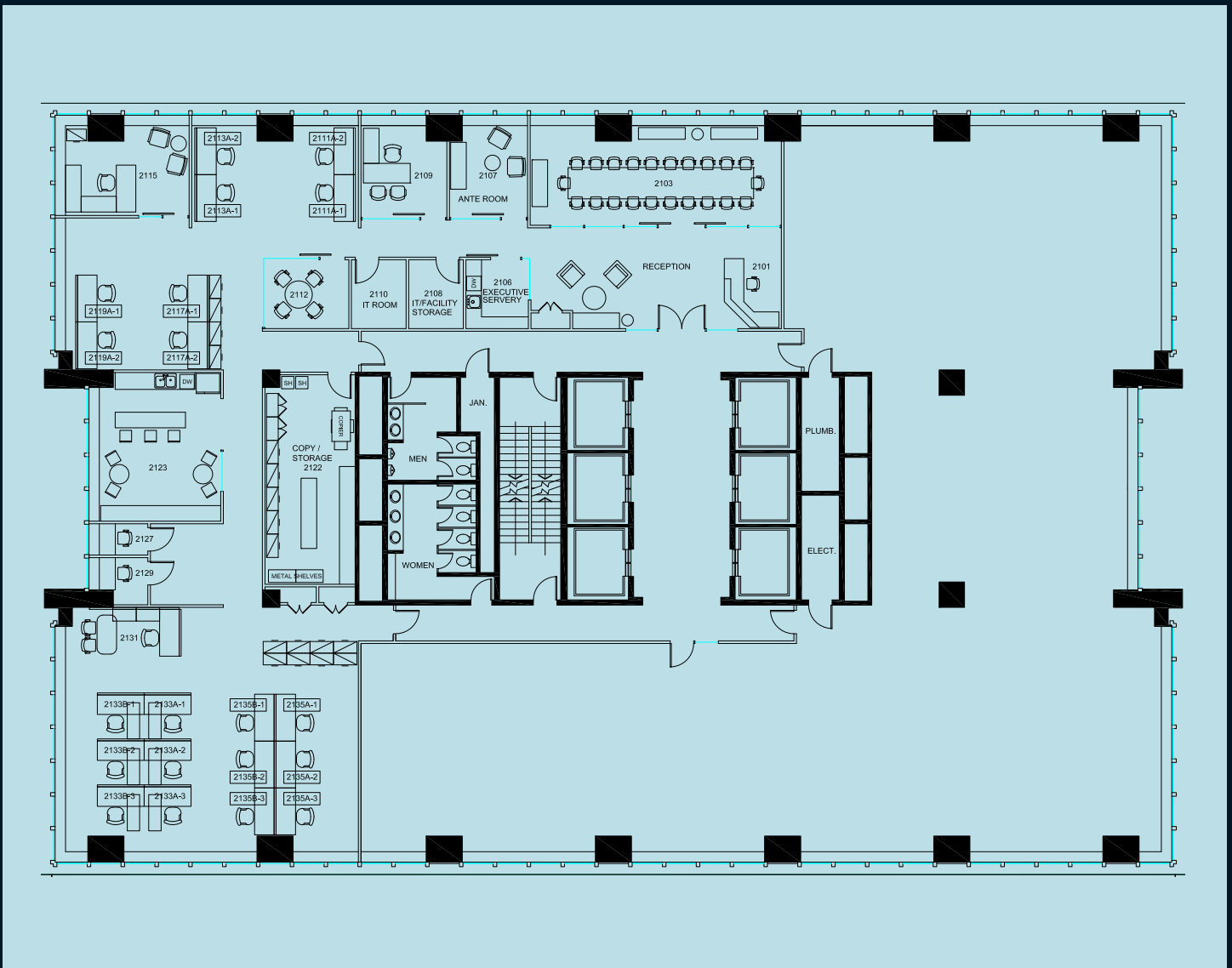
ADDITIONAL RENT
\$28.20 psf/pa (2026)



FURNITURE
Available


THE SUITE

Very nicely improved northwest corner suite with elevator exposure and great views. The layout consists of a reception, large boardroom with server, 3 north-facing offices (including a NW corner executive office), a meeting room, open working areas currently configured with 21 workstations, 2 call rooms, kitchen, servery room and copy/storage room.







 **JLL** SEE A BRIGHTER WAY

Scott MacDonald*

Executive Vice President
scott.macdonald@jll.com
+1 604 998 6020

Gavin Reynolds*

Executive Vice President
gavin.reynolds@jll.com
+1 604 998 6015

Although information contained herein has been obtained from sources deemed reliable, the owner, Jones Lang LaSalle Real Estate Services, Inc. ("JLL Canada"), and/or their representatives, brokers or agents make no guarantees as to the accuracy of the information contained herein, and offer the property/portfolio without express or implied warranties of any kind. The property/portfolio may be withdrawn without notice. If the recipient of this information has signed a confidentiality agreement regarding this matter, this information is subject to the terms of that agreement.