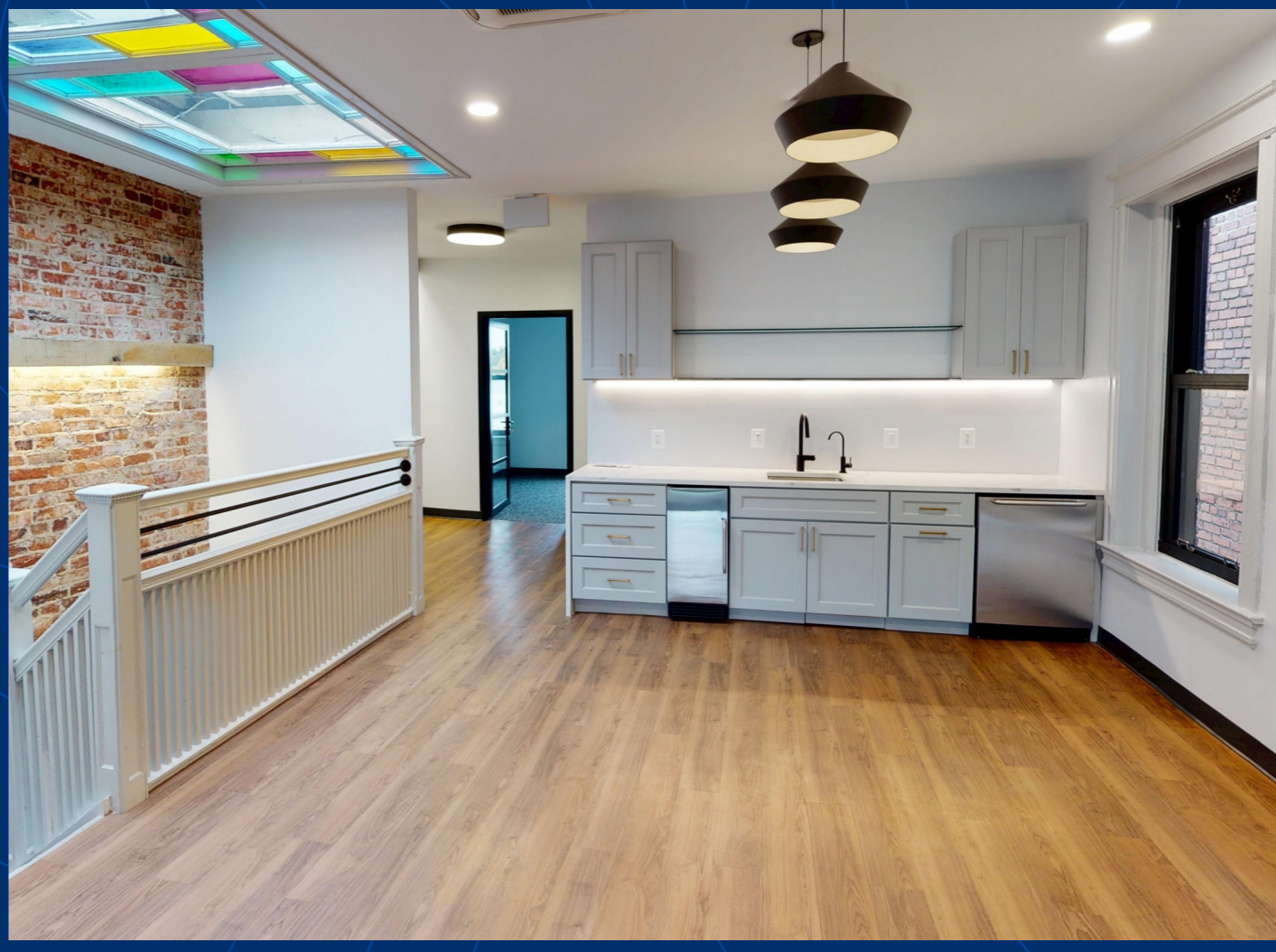


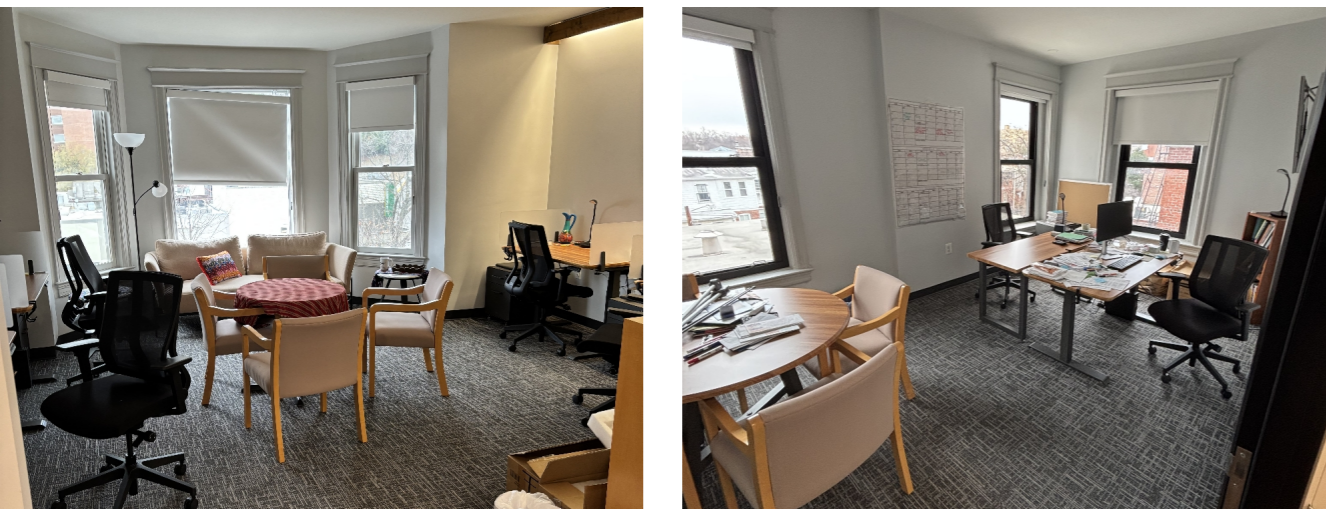


Sublease Opportunity

Move-In-Ready Office
at Woodley Park Metro



2629 Connecticut Avenue NW | Washington, DC 20008



Property Highlights

Size 2,062 SF (Floors 2 & 3)

Rent \$40.00/SF Full Service

Term Flexible, short-term

Condition Plug-and-play, furnished

Location Woodley Park / Conn. Ave

Availability Within 30 days

Furniture Included



Two-level suite



Ample natural light



Wired & furnished



Steps from Metro

[VIEW BROCHURE](#)

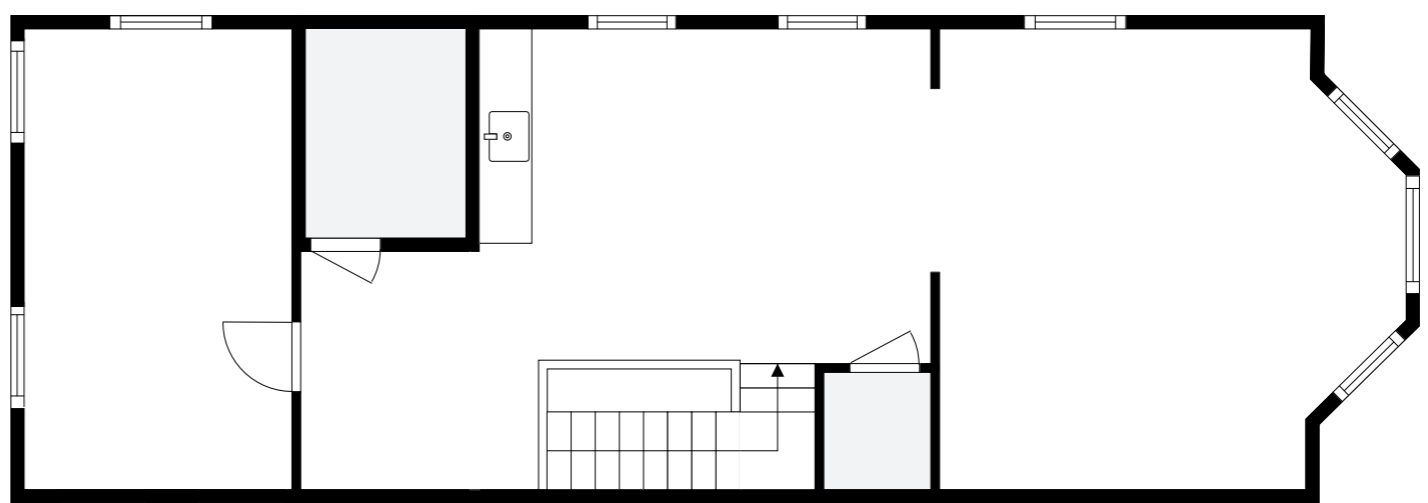
[VIRTUAL TOUR](#)

Floor Plans

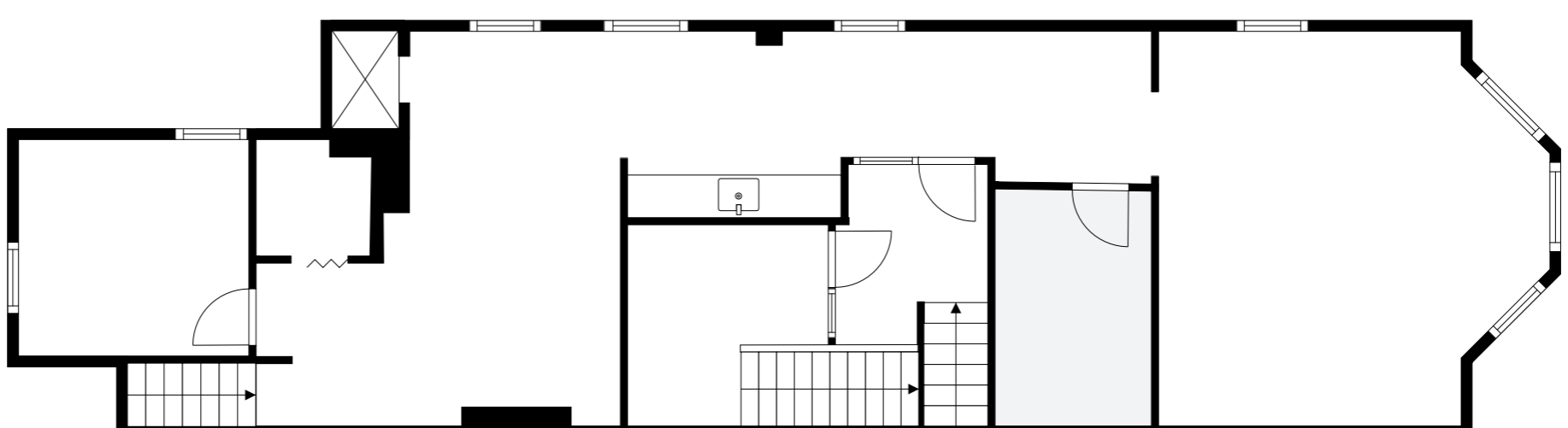
2,062 SF (combined)

Two full floors with frontage along Connecticut Ave

Third Floor



Second Floor



Please direct inquiries to:

Lukas Stanat
585.770.4550
lukas.stanat@streamrealty.com

Matt Pacinelli
202.271.0526
matt.pacinelli@streamrealty.com

Charlie Smiroldo
703.498.0178
charlie.smiroldo@streamrealty.com