



For Lease

CONTACT US:

Rico Cheung

Executive Vice President
+1 415.519.1749
rico.cheung@colliers.com
License # 01067557

Kyle Hipple

Vice President
+1 415.259.7928
kyle.hipple@colliers.com
License # 02032124

Alfonso Pintor

Associate
+1 650.486.2229
alfonso.pintor@colliers.com
License # 02241623

Colliers

203 Redwood Shores Pkwy, Suite 125
Redwood City, CA 94065
P: +1 650 486 2200
colliers.com/sanfranciscobayarea

2528 Qume Drive, Suite 12
San Jose, CA

Fully Built Out Wet Lab/Office Space

Property Highlights

- 5,376 SF
- Large open wet lab
- Four (4) support labs
- Warehouse with grade level door
- Three (3) private offices
- One (1) conference room
- Breakroom

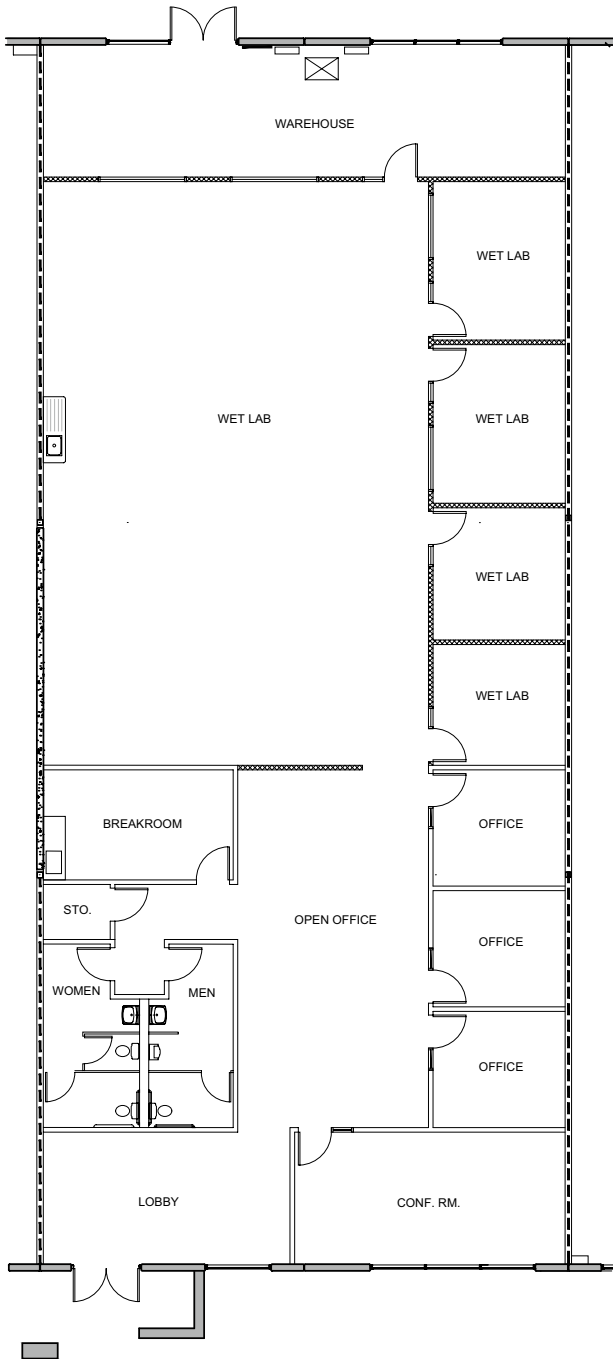
FOR LEASE

2528 Qume Drive | Suite 12

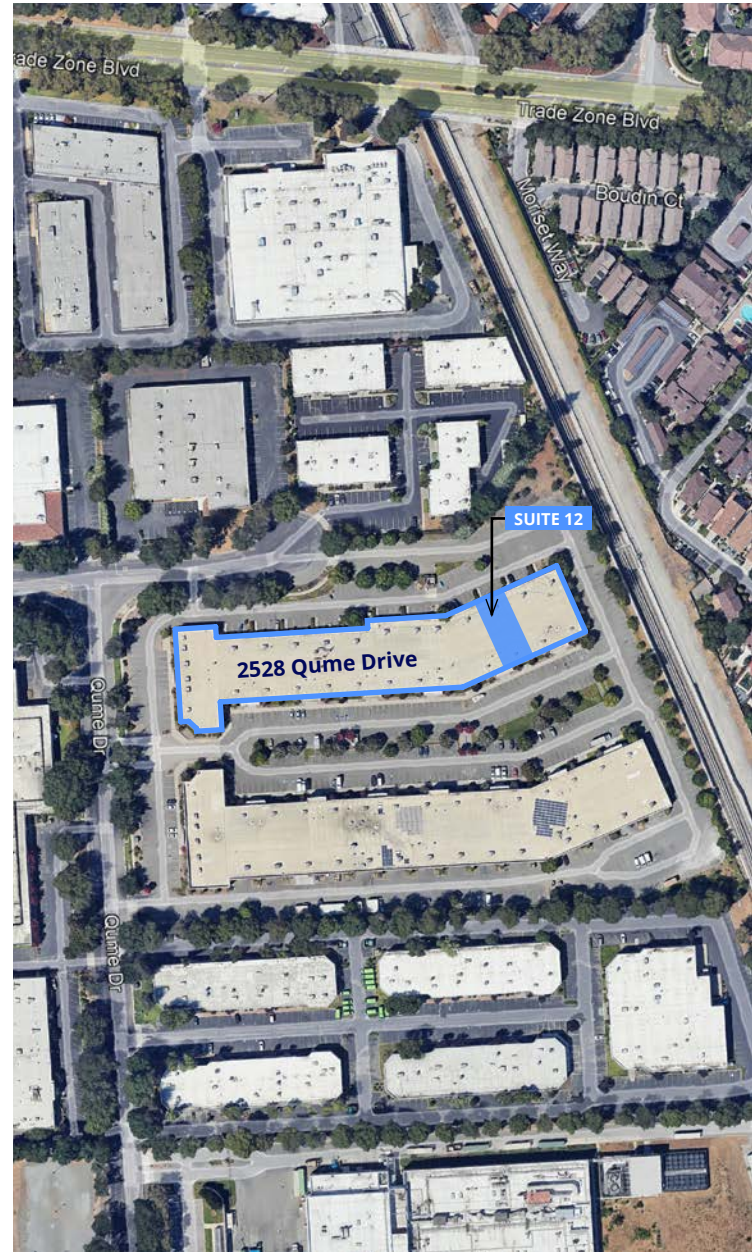
San Jose, CA



Floorplan



Site Aerial



FOR LEASE

2528 Qume Drive | Suite 12
San Jose, CA

Colliers

Gallery

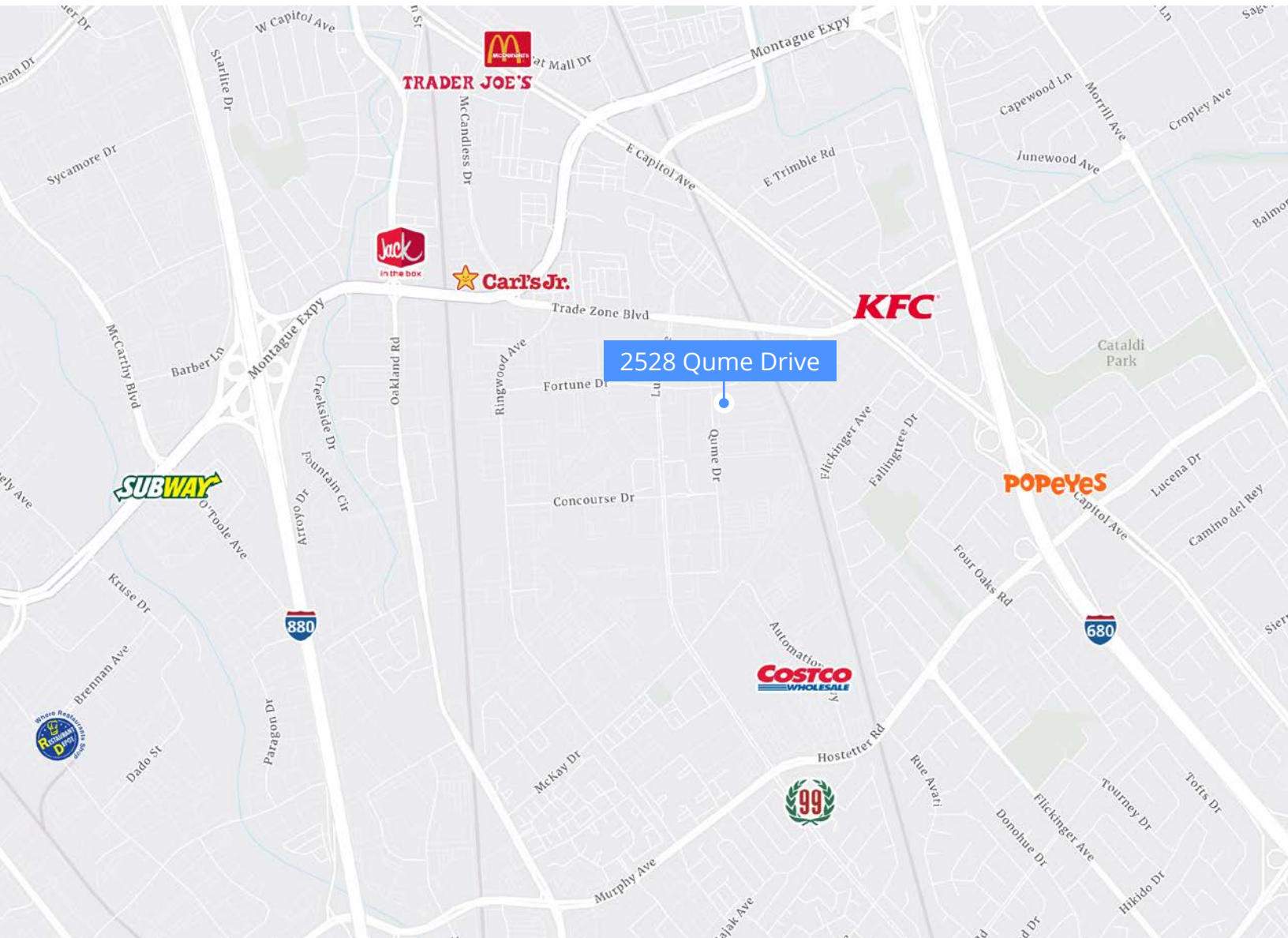


This document/email has been prepared by Colliers for advertising and general information only. Colliers makes no guarantees, representations or warranties of any kind, expressed or implied, regarding the information including, but not limited to, warranties of content, accuracy and reliability. Any interested party should undertake their own inquiries as to the accuracy of the information. Colliers excludes unequivocally all inferred or implied terms, conditions and warranties arising out of this document and excludes all liability for loss and damages arising there from. This publication is the copyrighted property of Colliers and /or its licensor(s). © 2024. All rights reserved. This communication is not intended to cause or induce breach of an existing listing agreement. Colliers International.

FOR LEASE

2528 Qume Drive | Suite 12 | San Jose, CA

Area Map



CONTACT US:



Rico Cheung
Executive Vice President
+1 415.519.1749
rico.cheung@colliers.com
License # 01067557

Kyle Hipple
Vice President
+1 415.259.7928
kyle.hipple@colliers.com
License # 02032124

Alfonso Pintor
Associate
+1 650.486.2229
alfonso.pintor@colliers.com
License # 02241623