



# STEPHEN AVENUE PLACE

700 2ND STREET SW | DOWNTOWN SUBLEASE

Willem Thoma  
Associate Vice President  
403 512 8812

Adam Hayes  
Principal  
403 612 6134

John Engbloom  
Principal  
403 617 3029



# ELEVATE YOUR WORKDAY

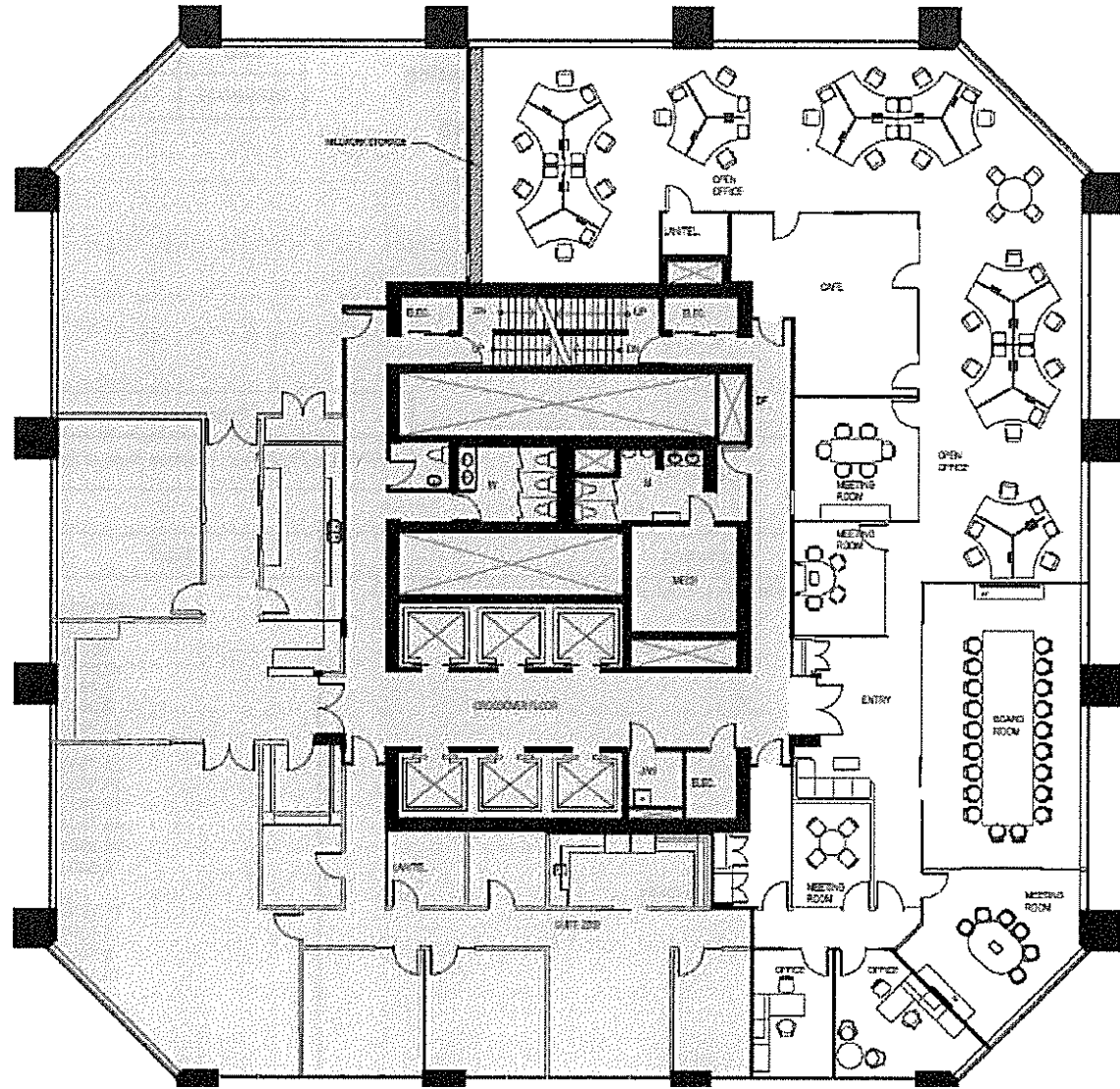
- PRIME LOCATION:** +15 Connected to Brookfield Place, Bow Parkade, and the CORE Shopping Centre.
- CITYSCAPE VIEWS:** Panoramic views of Calgary from upper floors.
- FLEXIBLE SPACES:** Open floor plans with optimal column placement, offering versatile layout options.
- BUSINESS ESSENTIALS:** Complimentary conference facilities, premium fitness centre, tenant lounge, and games room available for tenant's exclusive use.

# YOUR NEXT OFFICE

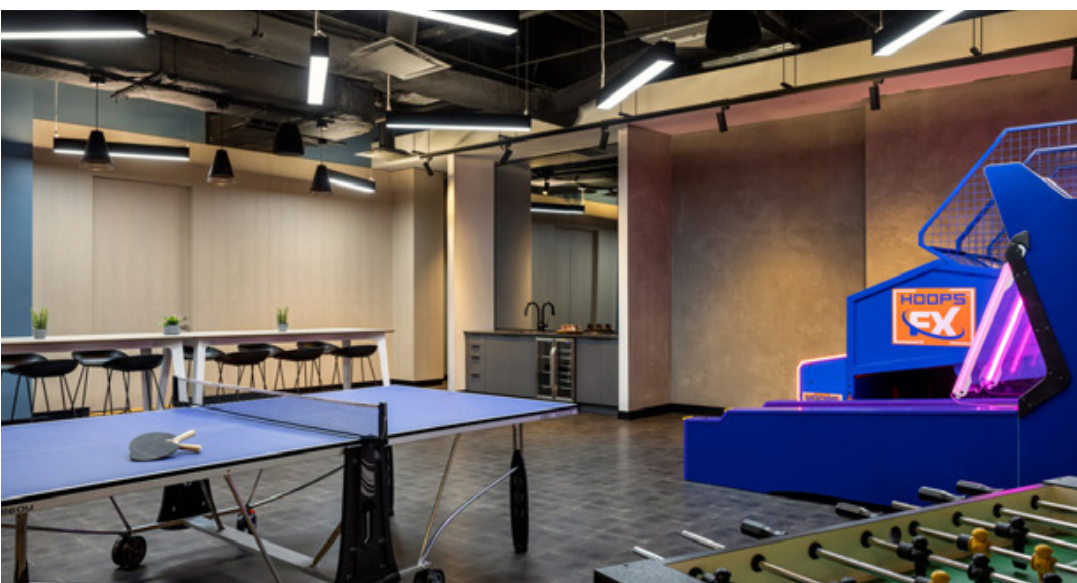
- YEAR BUILT:** 1977 / 2024 (renov.)
- BUILDING AREA:** 646,169 sf
- OP. COSTS:** \$20.18/sf (est. 2026)
- LANDLORD:** MNP Ltd. In its capacity as receiver of Stephen Avenue Place and not in its personal or corporate capacity
- AVAILABLE:** Immediately
- SUBPREMISES:** Suite 2250: 6,855 sf
- RATES:** Market Sublease Rates
- AVG FLOORPLATE:** 14,800 sf
- HVAC:** Mon-Fri: 6:00 am-6:00 pm  
Sat: 10:00 am - 3:00 pm
- SUBLEASE EXPIRY:** September 29, 2028
- PARKING:** 1:3,600 sf (includes building parkade and Bow Parkade) availability



# SUITE 2250 | 6,855 SF



- |                 |             |               |                     |
|-----------------|-------------|---------------|---------------------|
| 3 Offices       | Boardroom   | Electric Room | Show suite standard |
| 4 Meeting rooms | Kitchen     | IT Room       | Elevator access     |
| 24 Workstations | Lounge area | Furnished     | Locker room         |



# COMMUNITY HIGHLIGHTS

## Building Amenities

- FITNESS & WELLNESS:** Club-quality fitness facility for exclusive use by building tenants at no additional charge.
- PARKING & TRANSIT:** Steps from LRT and close proximity to bus stops. +15 connections to Brookfield Place, Bow Parkade, and CORE shopping centre.
- DINING:** In-building dining options including Pineapple Hall, Pigeonhole, Goro + Gun, Phil & Sebastian, Barbarella and Major Tom.

## Neighbourhood Highlights

- OUTDOOR ACCESS:** Proximity to pathways, Prince's Island Park & Peace Bridge.
- STEPHEN AVE WALK:** A pedestrian friendly corridor lined with heritage architecture, boutique shops, patios, and public art installations.
- HOTELS & SHOPPING:** Eau Claire Sheraton, Westin, The Dorian & CORE Shopping.

# THE HEART OF STEPHEN AVENUE



## Legend

### PARKS & LANDMARKS

- 1 Calgary Tower
- 2 Devonian Gardens

### CHILDCARE

- 1 Bow Valley Child Care Centre

### HOTELS

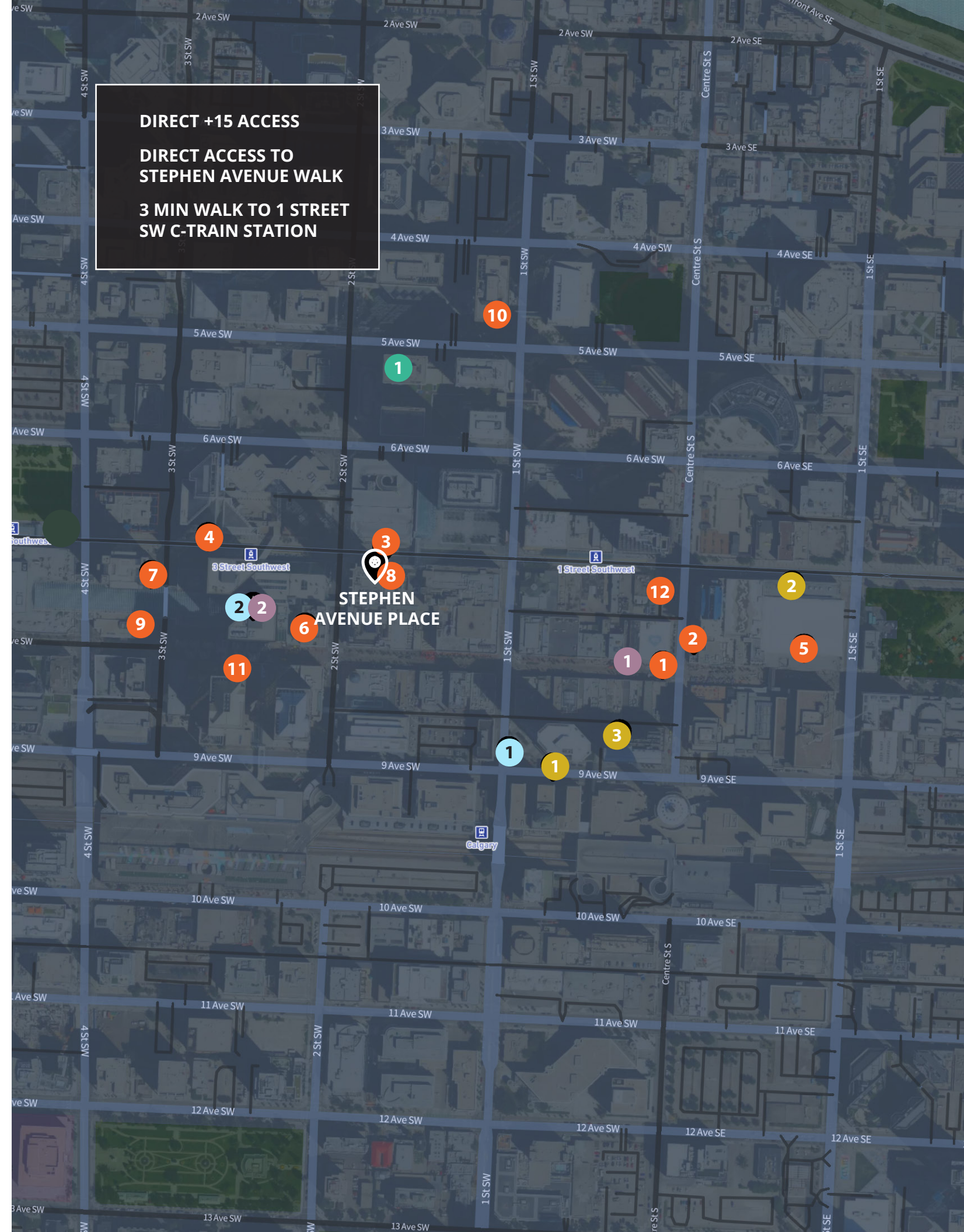
- 1 Fairmont Palliser Hotel
- 2 Hyatt Regency Hotel
- 3 Le Germain Calgary

### RECREATION

- 1 HotShop Wellness
- 2 The CORE Shopping Centre

### DINING & COFFEE

- 1 Saltlik
- 2 Modern Steak
- 3 Goro + Gun
- 4 Cactus Club Cafe
- 5 Rosso Coffee Roasters
- 6 Local Public Eatery
- 7 Deville Coffee
- 8 Barbarella
- 9 Hy's Steakhouse
- 10 OEB Breakfast Co.
- 11 Earls Kitchen + Bar
- 12 Palomino Smokehouse



# LET'S CONNECT

## **Willem Thoma**

Associate Vice President  
403 512 8812  
willem.thoma@avisonyoung.com

## **John Engbloom**

Principal  
403 617 3029  
john.Engbloom@avisonyoung.com

## **Adam Hayes**

Principal  
403 612 6134  
adam.hayes@avisonyoung.com



© 2025. Avison Young. Information contained herein was obtained from sources deemed reliable and, while thought to be correct, have not been verified. Avison Young does not guarantee the accuracy or completeness of the information presented, nor assumes any responsibility or liability for any errors or omissions therein.

Eighth Avenue Place, 4300, 525 - 8th Avenue SW | Calgary, AB T2P 1G1 | +1 403 262 3082

**AVISON  
YOUNG**