



FOR LEASE

John Bucher Paulina Salazar
Partner Senior Associate
T 949.468.2246 T 714.244.7310
C 949.463.5672 C 714.244.7310



13420

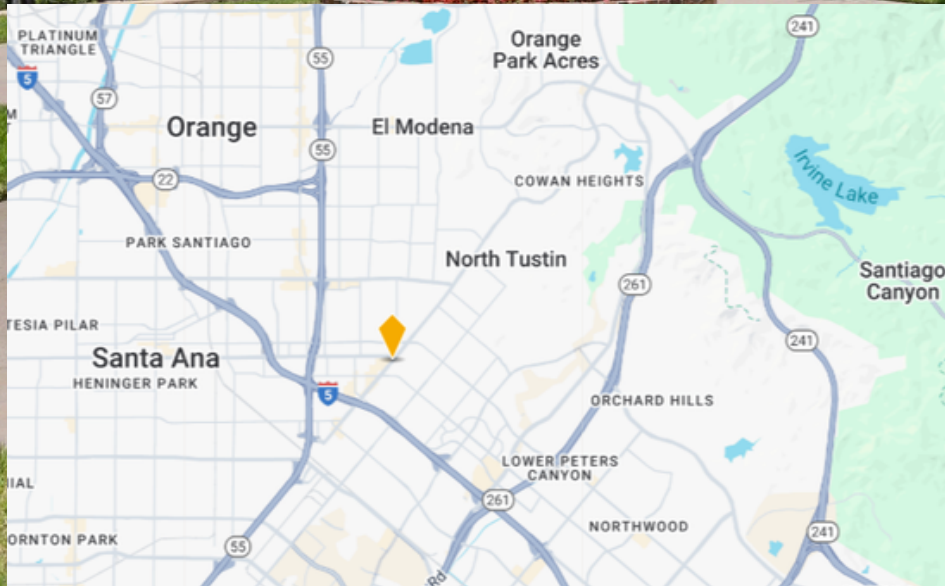
NEWPORT AVE
TUSTIN, CA 92780

13420 NEWPORT AVE

Suite F/G
(2,011 SF) Dermatology Build out

PROPERTY FEATURES

- Prime ground floor medical suite with easy patient access
- Abundant on-site parking for patients and staff convenience
- High-visibility Newport Avenue location
- Actively managed property with a responsive, engaged landlord
- Medical-ready infrastructure with plumbing, accessibility, and flexible layouts



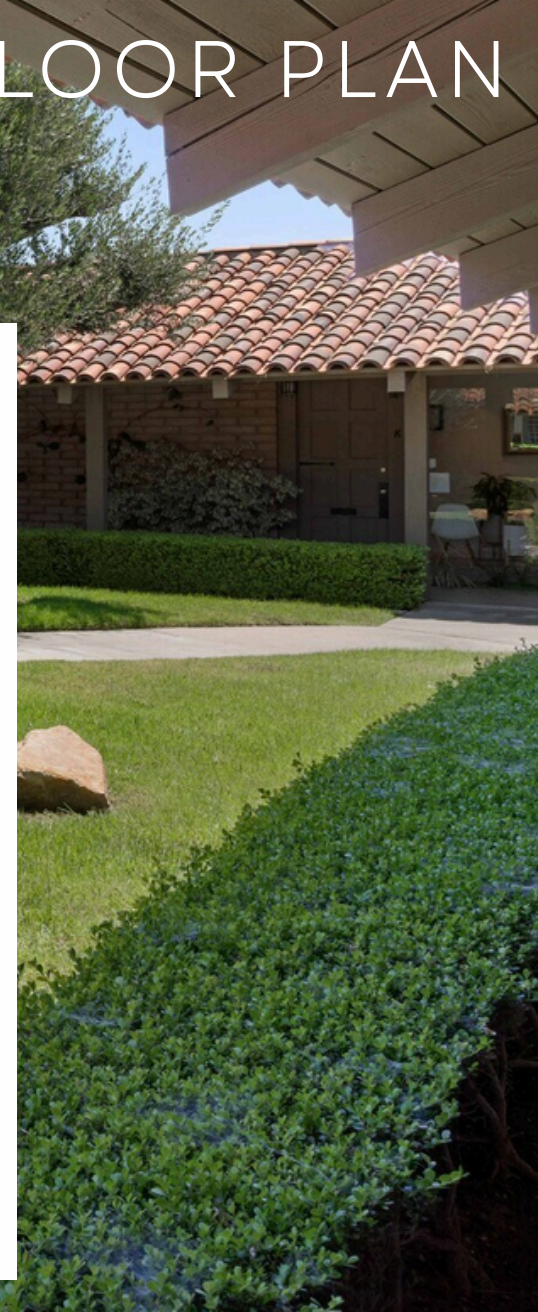
John Bucher
Partner
T 949.468.2246
C 949.463.5672

Paulina Salazar
Senior Associate
T 714.244.7310
C 714.244.7310



13420 NEWPORT AVE

FLOOR PLAN



John Bucher
Partner
T 949.468.2246
C 949.463.5672

Paulina Salazar
Senior Associate
T 714.244.7310
C 714.244.7310

