

DOWNTOWN PLEASANTON OFFICE AND MIXED USE SPACE AVAILABLE

511 MAIN STREET

SUITE 507 AND 509 | PLEASANTON, CA

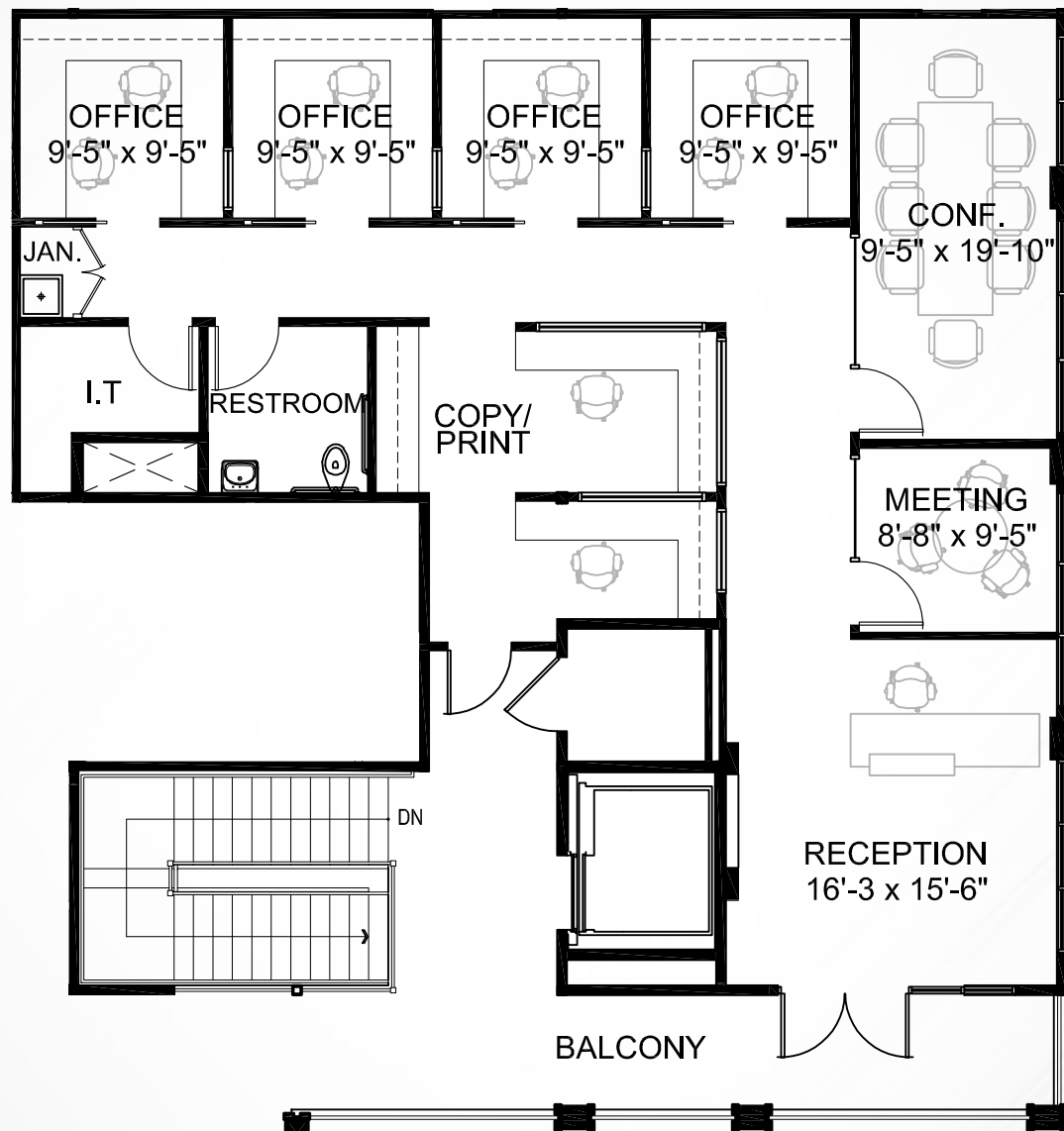


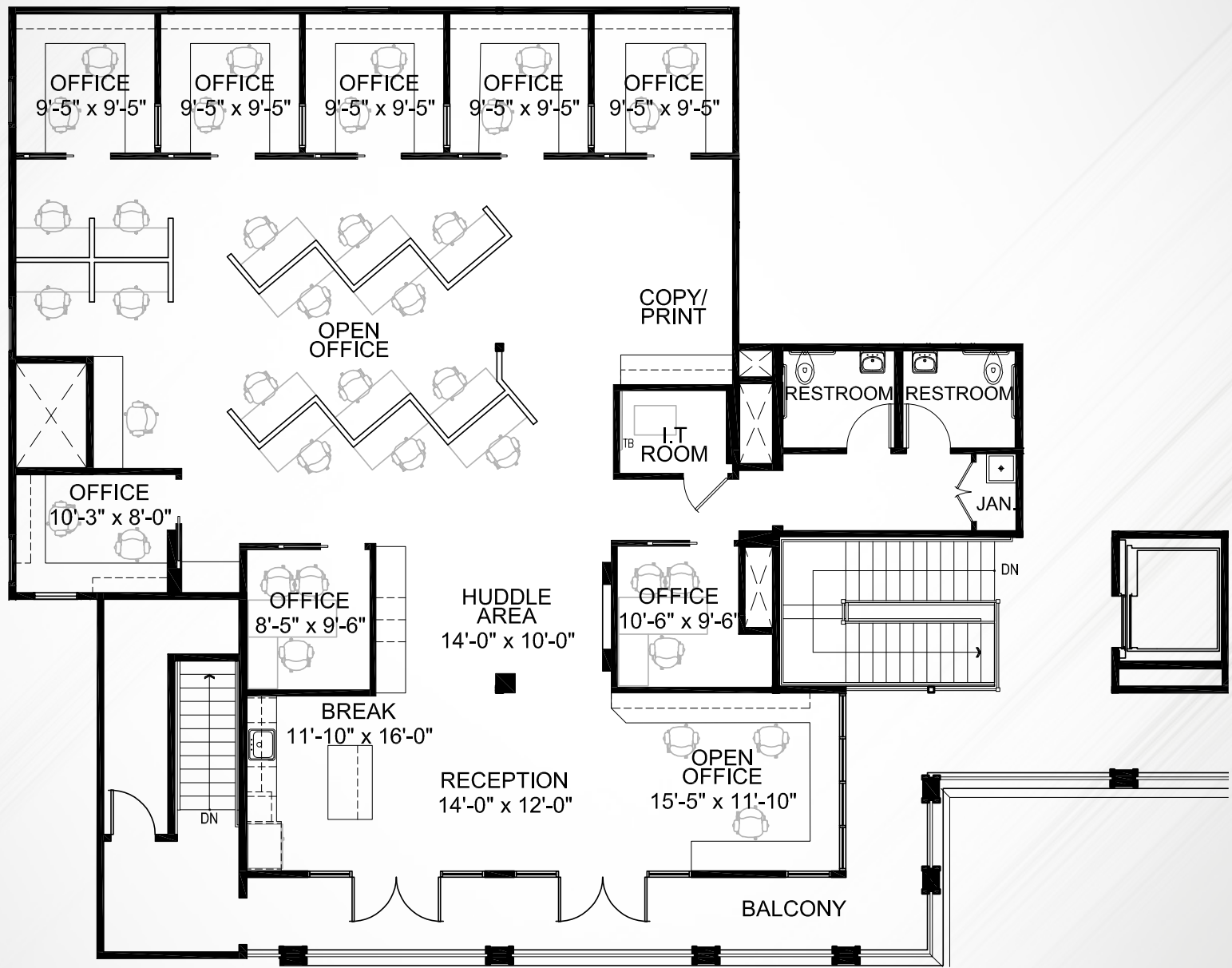
SPACES FROM ±1,810 – ±5,086 RSF AVAILABLE

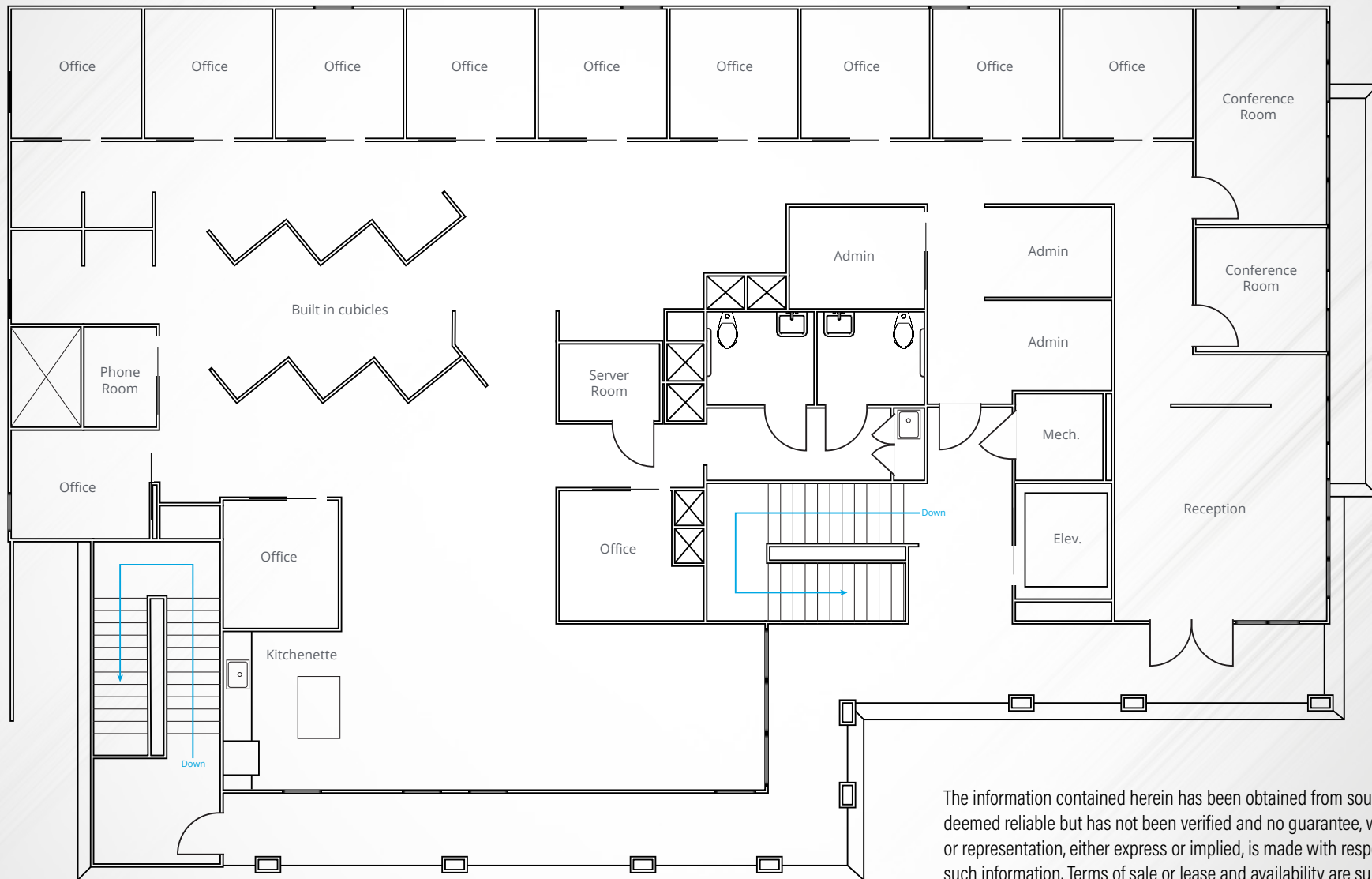
NEWMARK

DAN WATSON 925.200.6862
Dan.Watson@nmrk.com // CA RE LIC #1438710

JEFF MORGENSTERN 925.467.0905
Jeff.Morgenstern@nmrk.com // CA RE License #01275910







The information contained herein has been obtained from sources deemed reliable but has not been verified and no guarantee, warranty or representation, either express or implied, is made with respect to such information. Terms of sale or lease and availability are subject to change or withdrawal without notice. 8042936820

PROPERTY OVERVIEW



PROPERTY HIGHLIGHTS

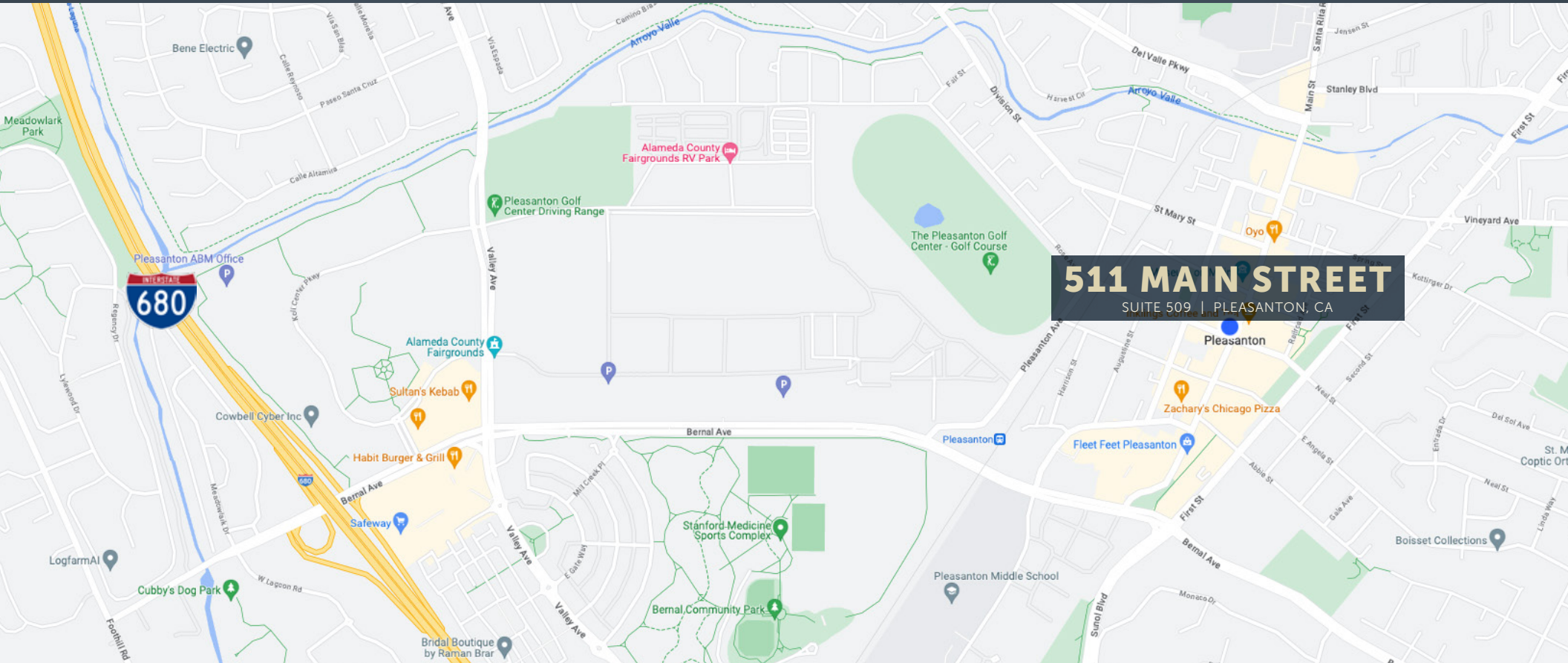
- Located on Main Street in Downtown Pleasanton
- Available Now
- Walking Distance to Shops and Restaurants
- Parking available on street or in downtown parking lots
- Pleasanton is ranked #885 of 18,157 Best Places to Live in America

NEWMARK

DAN WATSON 925.200.6862
Dan.Watson@nrmk.com // CA RE LIC #1438710

JEFF MORGENSTERN 925.467.0905
Jeff.Morgenstern@nrmk.com // CA RE License #01275910

LOCATION OVERVIEW



DEMOGRAPHICS



74,012
Total
Population



83,753
Daytime
Population



4,446
Total
Businesses



\$127,309
Median Disposable
Income



\$174,790
Median HH
Income



68%
Bachelor's/graduate
Degrees

NEWMARK

DAN WATSON 925.200.6862
Dan.Watson@nrmk.com // CA RE LIC #1438710

JEFF MORGENSTERN 925.467.0905
Jeff.Morgenstern@nrmk.com // CA RE License #01275910