

790 MADISON AVENUE

Southwest Corner of Madison Avenue and East 67th Street

SECOND FLOOR GALLERY/OFFICE SPACE FOR LEASE



- Rare Office Opportunity with Madison Ave. show window
- Building entrance on Madison Avenue
- Full Service office building w/ Full-Time Guard/Doorman
- Dry use only—No Medical or Spa
- Excellent for Showroom, Fashion, Gallery, or Offices— join Jacob Cohen (coming soon), Antiquarium, Cullman and Kravis, Willem deKooning
- Windows face Madison Ave. above Robert Marc Optician

ASKING RENT:

\$8,250 Per Month

Exclusively represented by:

THE **DANA** COMMERCIAL TEAM

AT DOUGLAS ELLIMAN REAL ESTATE

GARY DANA	212.692.6183	gdana@elliman.com
RICK DANA	212.692.6182	rdana@elliman.com
CHRIS DANA	212.455.4721	cdana@elliman.com

SIZE

Suite 200 1000 square feet

TERM

Short Term or Long Term

POSSESSION

Arranged

TENANT

67 Madison Partners LLC

ELECTRIC

\$325 per mo.

DOORMAN

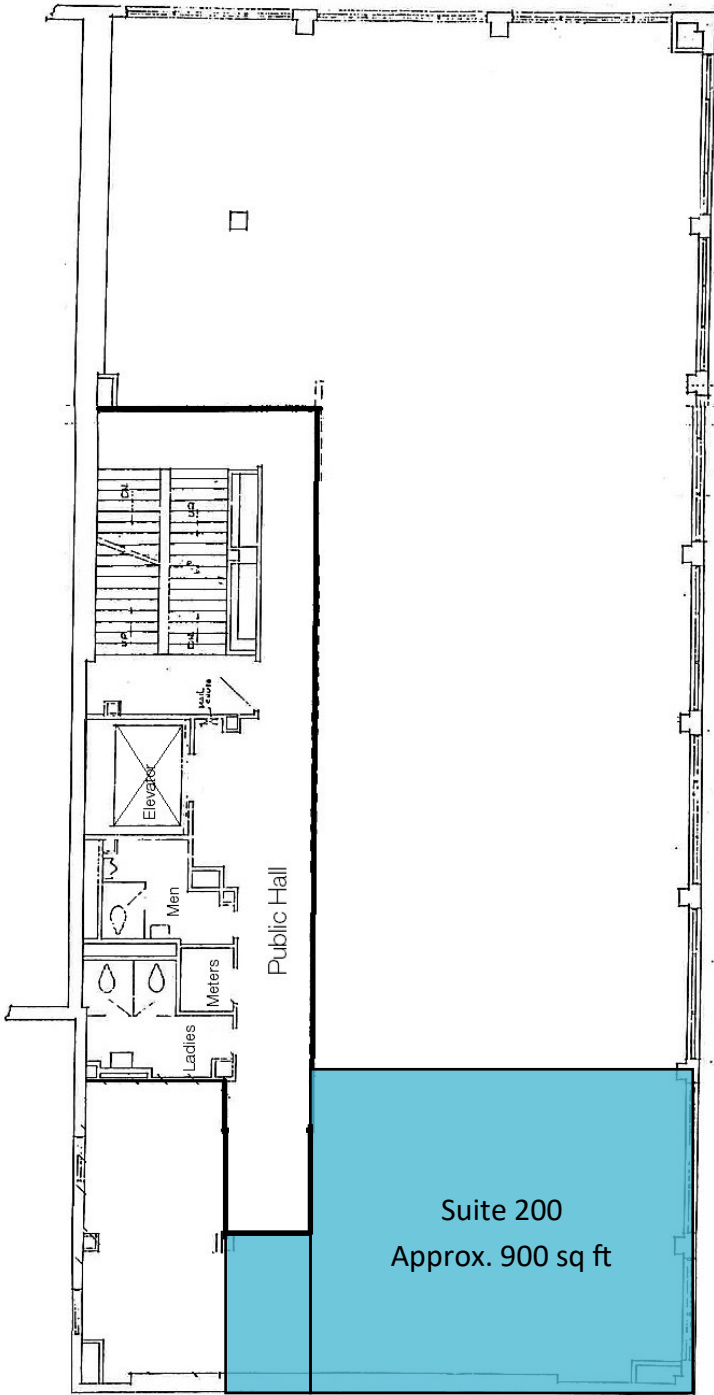
\$195 per mo.

EXPOSURE

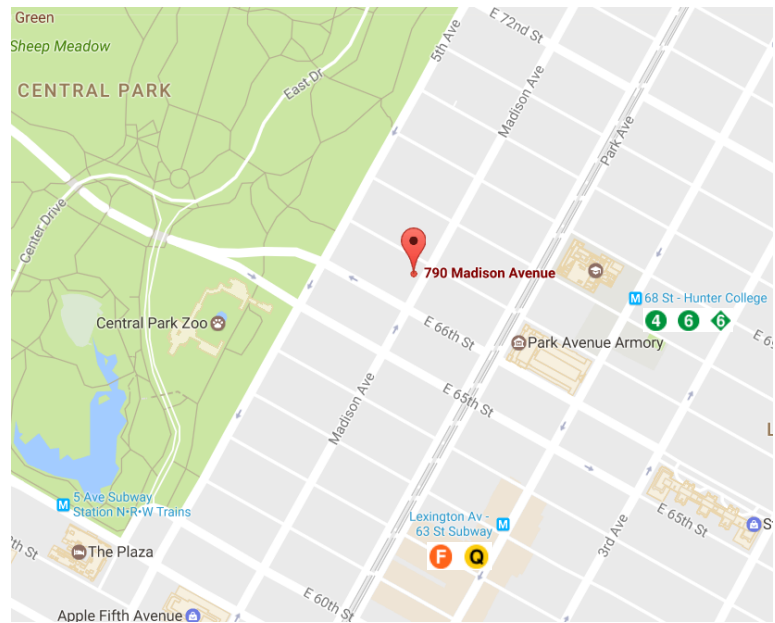
2nd Floor Show Window

790 Madison Avenue

East 67th Street



—Madison Avenue—



THE DANA COMMERCIAL TEAM

AT DOUGLAS ELLIMAN REAL ESTATE

GARY DANA	212.692.6183	gdana@elliman.com
RICK DANA	212.692.6182	rdana@elliman.com
CHRIS DANA	212.455.4721	cdana@elliman.com

© 2017 DOUGLAS ELLIMAN REAL ESTATE. ALL MATERIAL PRESENTED HEREIN IS INTENDED FOR INFORMATION PURPOSES ONLY. WHILE THIS INFORMATION IS BELIEVED TO BE CORRECT, IT IS REPRESENTED SUBJECT TO ERRORS, OMISSIONS, CHANGES OR WITHDRAWAL WITHOUT NOTICE. ALL PROPERTY INFORMATION, INCLUDING, BUT NOT LIMITED TO SQUARE FOOTAGE, ROOM COUNT, NUMBER OF BEDROOMS AND THE SCHOOL DISTRICT IN PROPERTY LISTINGS SHOULD BE VERIFIED BY YOUR OWN ATTORNEY, ARCHITECT OR ZONING EXPERT. IF YOUR PROPERTY IS CURRENTLY LISTED WITH ANOTHER REAL ESTATE BROKER, PLEASE DISREGARD THIS OFFER. IT IS NOT OUR INTENTION TO SOLICIT THE OFFERINGS OF OTHER REAL ESTATE BROKERS. WE COOPERATE WITH THEM FULLY. EQUAL HOUSING OPPORTUNITY.



THE DANA COMMERCIAL TEAM
Douglas Elliman
REAL ESTATE EST. 1911