



## W10 Studios

2-4 Exmoor Street, London, W10 6BD

**small self contained studios  
with their own tea points,  
fully inclusive rents and  
access to a courtyard**

**93 to 1,990 sq ft**  
(8.64 to 184.88 sq m)

- self contained
- fully inclusive monthly costs
- small tea points in each unit
- access to a communal courtyard
- wooden floors in most of the units

# W10 Studios, 2-4 Exmoor Street, London, W10 6BD

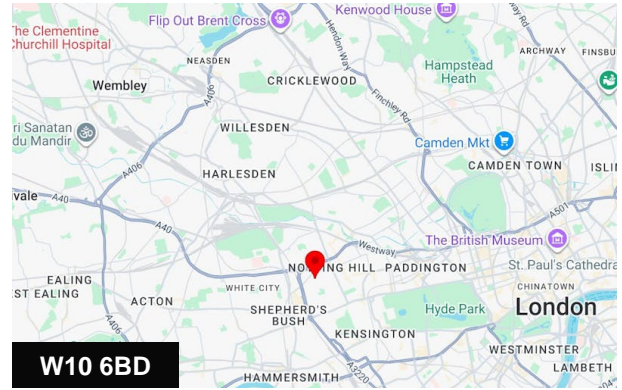
## Summary

<b>Available Size</b>	93 to 1,990 sq ft
<b>Rent</b>	£315 - £6,250 per month the monthly costs is fully inclusive of rent, rates, service charge and electricity
<b>Business Rates</b>	N/A
<b>Service Charge</b>	N/A
<b>Estate Charge</b>	N/A
<b>EPC Rating</b>	Upon enquiry

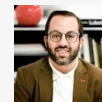
## Accommodation

The accommodation comprises the following areas:

Name	sq ft	sq m	Availability
Ground - Unit 6	105	9.75	Available
Ground - Unit 9	93	8.64	Available
Ground - unit 10	106	9.85	Available
1st	1,990	184.88	Available
1st - Unit 21	113	10.50	Available
1st - unit 22	108	10.03	Available
2nd - Loft Unit 11.6	160	14.86	Available
2nd - Unit 27	322	29.91	Available
<b>Total</b>	<b>2,997</b>	<b>278.42</b>	

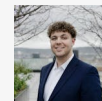


## Viewing & Further Information



**Simon Rinder**

020 7399 8611 | 07734 488 286  
simonrinder@pilcher.london



**Taylor Rosen**

020 7399 8610 | 07834 789 346  
taylorrosen@pilcher.london