

30 HAYMARKET,  
LONDON  
SW1



## 30 Haymarket, London, SW1

### 2,266 sq ft to 8,324 sq ft To LET

1<sup>st</sup>, 4<sup>th</sup> & 6<sup>th</sup> Floors



For further information please contact:

Rob Skioldebrand  
robertskioldebrand@brayfoxsmith.com  
07769 725 412

[brayfoxsmith.com](http://brayfoxsmith.com)

### Location

The property is situated on the east side of Haymarket within the district of St James', just south of Piccadilly Circus. The property benefits from a significant number of local amenities that can be found in Leicester Square, Soho, and Covent Garden.

Piccadilly Circus Underground (Piccadilly line) is located under 0.1 miles from the subject property, with an estimated walk time of under 2 mins.

### Description

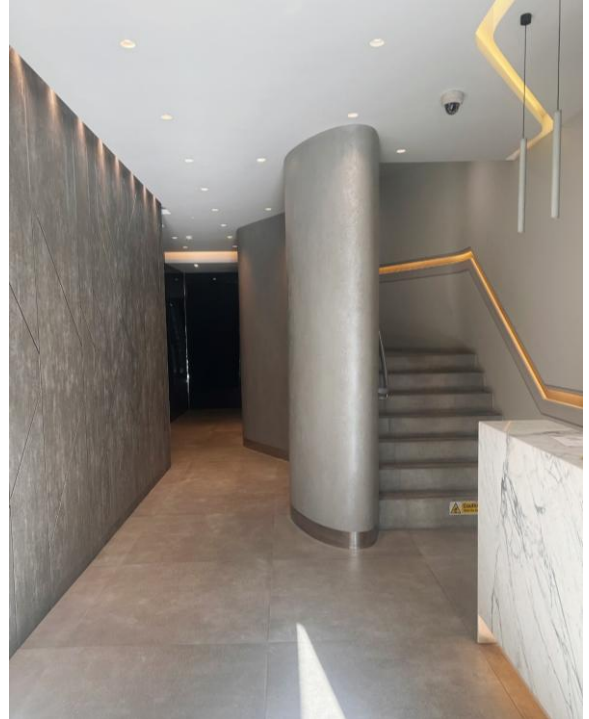
The available floors provide part fitted office accommodation

### Specification

- Newly refurbished reception area
- Part fitted with 10-person boardroom and kitchen
- Air conditioning
- Raised Floors
- 2 x 8-person passenger lift
- 24-hour access with commissionaire
- Pre-installed fibre connectivity
- Shower and bike facilities

### Terms

A new lease available direct from the Landlord for a term until 30<sup>th</sup> June 2026.



### Accommodation Available

6 <sup>th</sup> Floor	2,266 sq ft
4 <sup>th</sup> Floor	2,988 sq ft
1 <sup>st</sup> Floor	3,070 sq ft

### Rent

£10.00 psf

### Service Charge

c.£15.00 psf

### Business Rates

c.£30.00



For further information please contact:

Rob Skioldebrand  
robertskioldebrand@brayfoxsmith.com  
07769 725 412

brayfoxsmith.com

30 HAYMARKET,  
LONDON  
SW1

bray  
fox  
smith



For further information please contact:

Rob Skioldebrand  
robertskioldebrand@brayfoxsmith.com  
07769 725 412

brayfoxsmith.com