



Office lease opportunity

- Five minutes to Highway 401
- 2,800 sf available in new 22,750 sf office building
- Located on Laird Road between Highway 6 and Clair / Gordon amenities
- Great exposure on Guelph's south end commuter route to Highway 401



B-2 zoning



Minutes to amenities



Accessible by public transit

Chris Valeriote

Sales Representative, Principal
+1 226 366 9014

Mason Sinkeldam

Sales Representative
+1 226 366 9070

avisonyoung.ca



Platinum member

Property details

New class A office development under construction totaling approximately 22,750 sf with 2,800 sf first floor space available. Ideally situated along Laird Road in the south end of Guelph with quick access to Highway 401. Excellent signage opportunities and close proximity to Gordon / Clair Amenities. Ideal location for a head office. Floor layout can be adjusted to suit a tenants needs.



Available area
2,800 sf



Zoning
B-2



Parking
Common



Public transit
On route(s)



Signage
Available

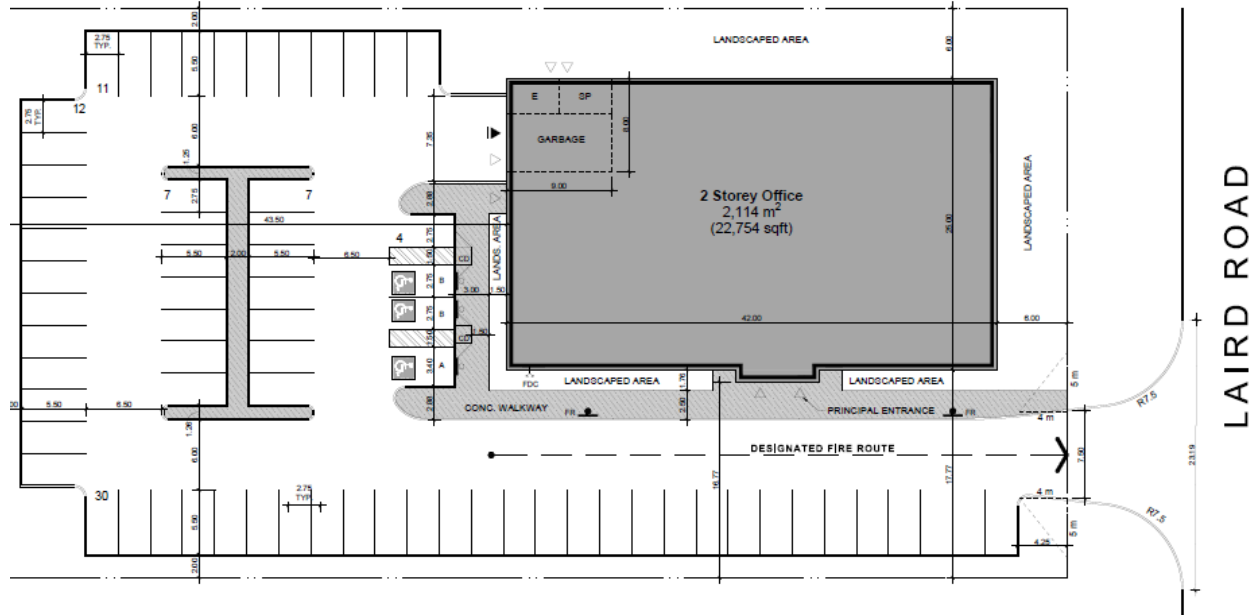


Asking net rate
\$22.95 psf

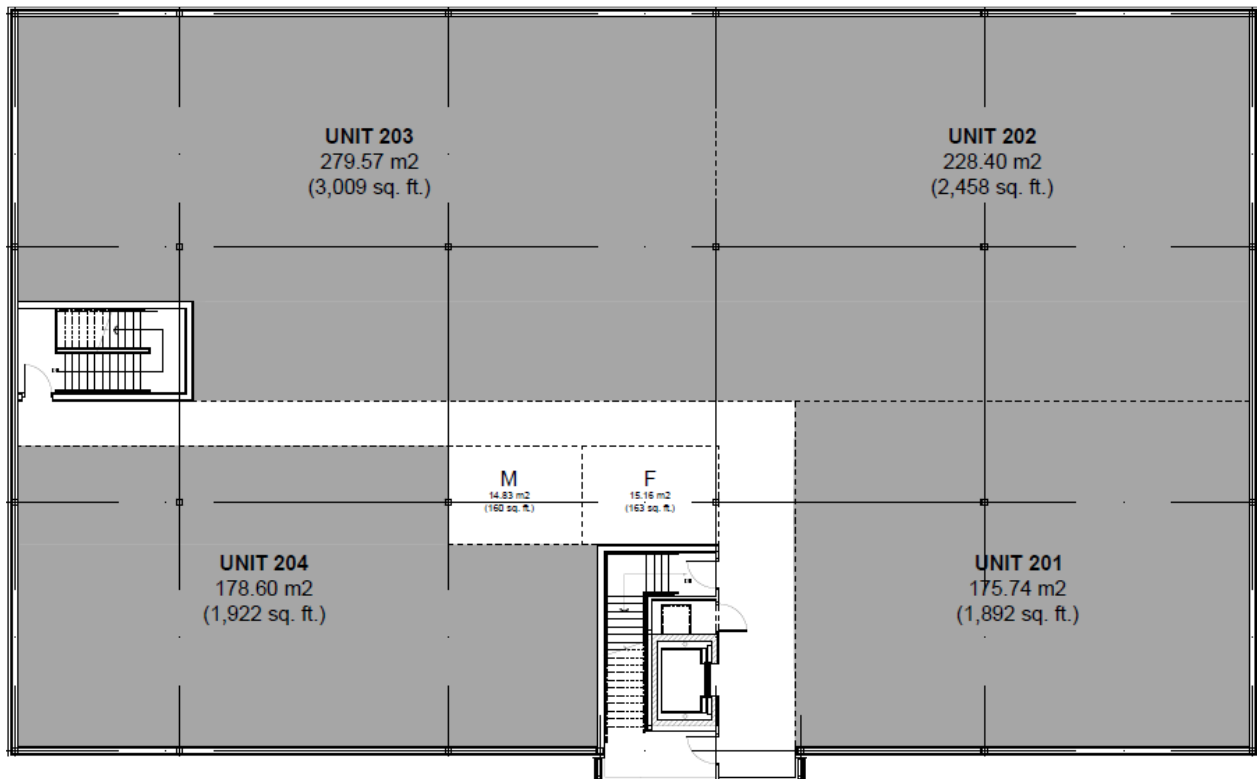
Additional rent
\$9.12 psf

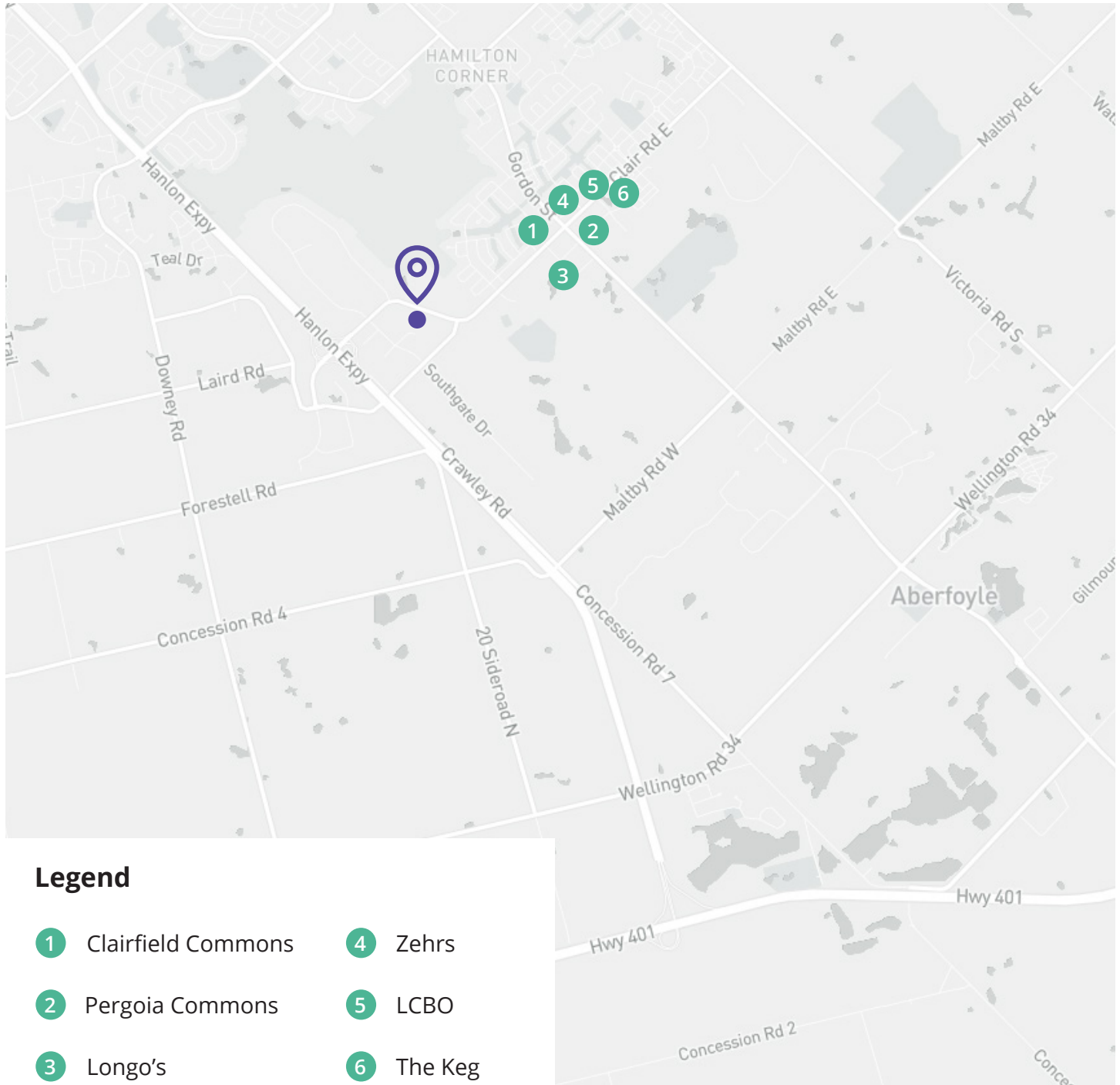


Site plans



Second level floor plan





Legend

- 1 Clairfield Commons
- 2 Pergoia Commons
- 3 Longo's
- 4 Zehrs
- 5 LCBO
- 6 The Keg

Get more information

Chris Valeriote
Sales Representative, Principal
+1 226 366 9014
chris.valeriote@avisonyoung.com

Mason Sinkeldam
Sales Representative
+1 226 366 9070
mason.sinkeldam@avisonyoung.com

Avison Young Commercial Real Estate Services, LP, Brokerage
231 Shearson Crescent, Suite 210
Cambridge ON N1T 1J5
T +1 226 366 9090 F +1 866 541 9755

