

# For Lease

**NAIDESCO**

## The Dorchester

665 S Skinker Blvd, St. Louis, MO 63105



## Property Highlights



**For Lease**  
1,405 SF & 1,933 SF



**First-Floor Retail in**  
Luxury Apartments



**Strong Area Traffic**  
Generators



**Contact Broker**  
for Pricing

For more information, please contact:



**William Barnes**

d (314) 994 - 4401  
c (314) 578 - 1708  
wbarnes@naidesco.com



**Michelle Goodwin, CCIM**

d (314) 994 - 4944  
c (636) 236 - 9802  
mgoodwin@naidesco.com

**NAIDESCO**

8112 Maryland Ave, Suite 300  
St. Louis, MO 63105  
(314) 994 - 4800  
[naidesco.com](http://naidesco.com)

## Property Features

- 1,405 SF former dental office
- 1,933 SF retail / gallery space
- Located on the first floor of The Dorchester, a 23-story luxury apartment community between Forest Park and the DeMun neighborhood
- Off-street customer and employee parking available
- Excellent proximity to I-64
- Strong area traffic generators including Forest Park, the DeMun neighborhood, SSM St. Mary's Hospital, the Delmar Loop, and Washington University

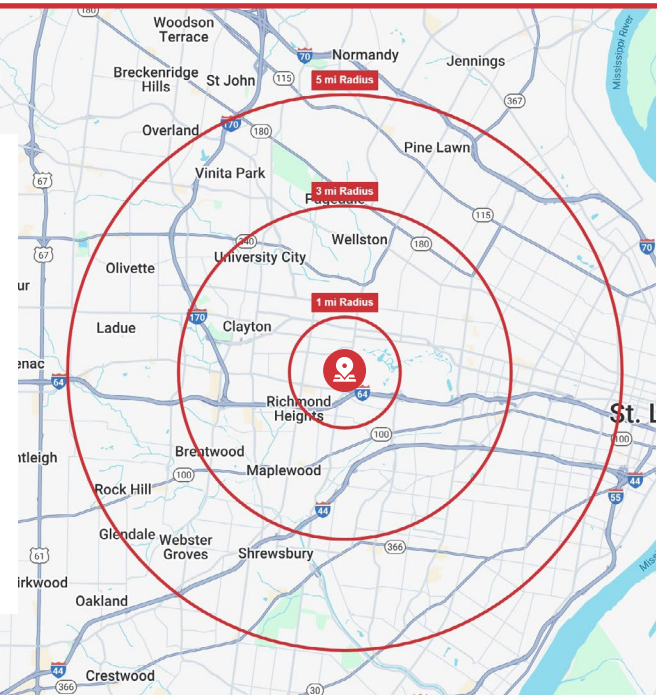
 **Lease Rate: Contact Broker**



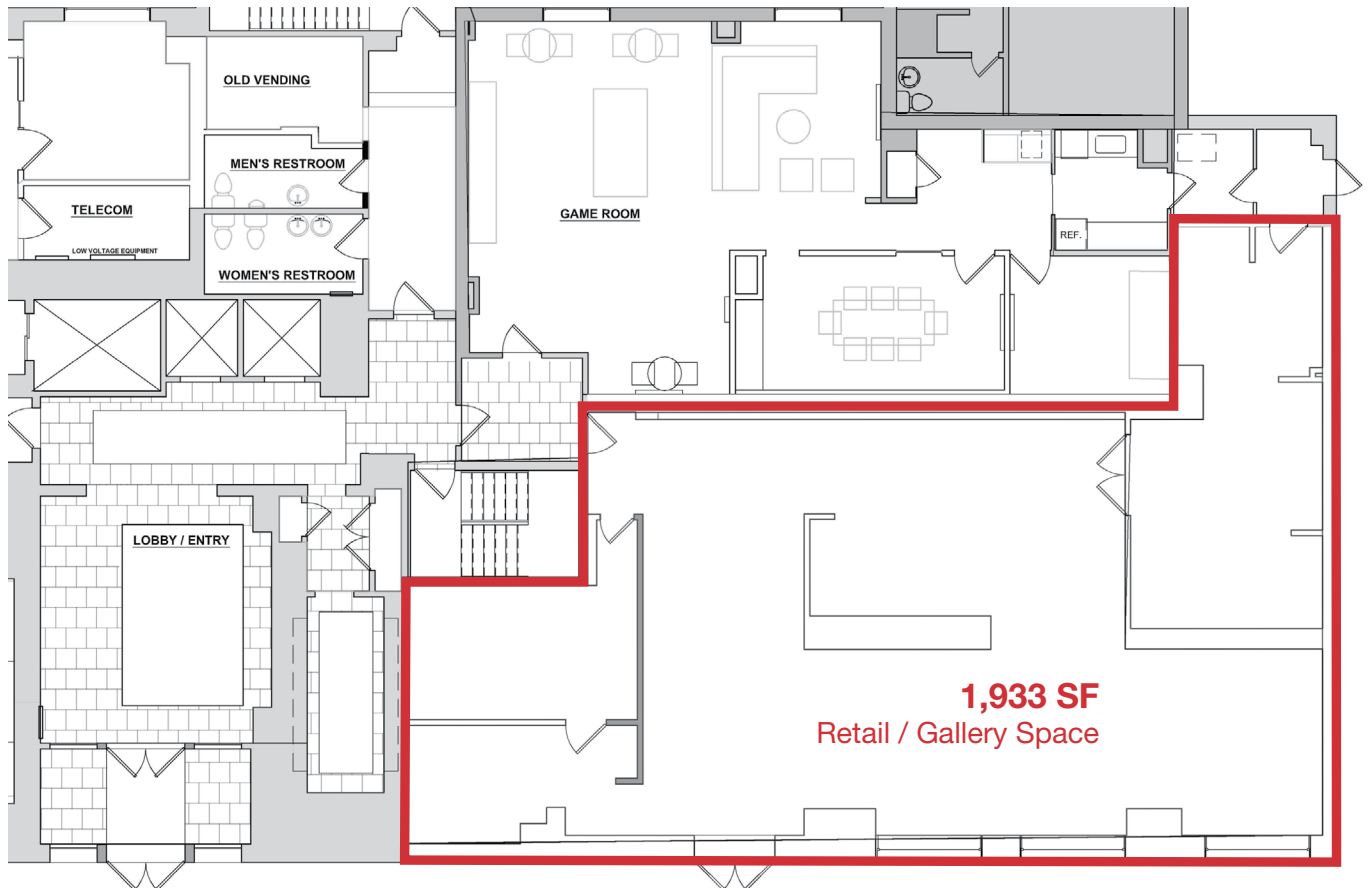
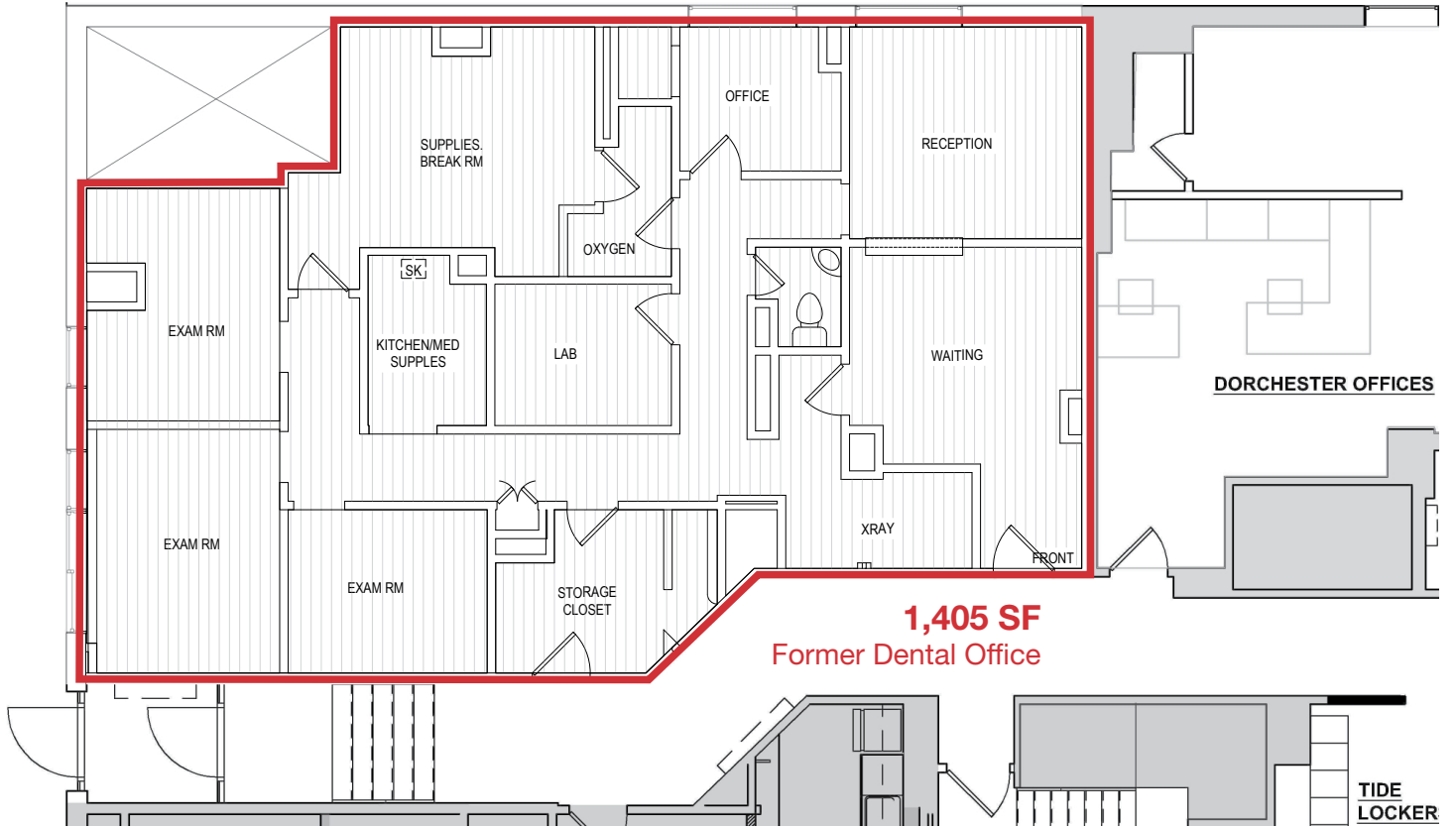
## Demographics

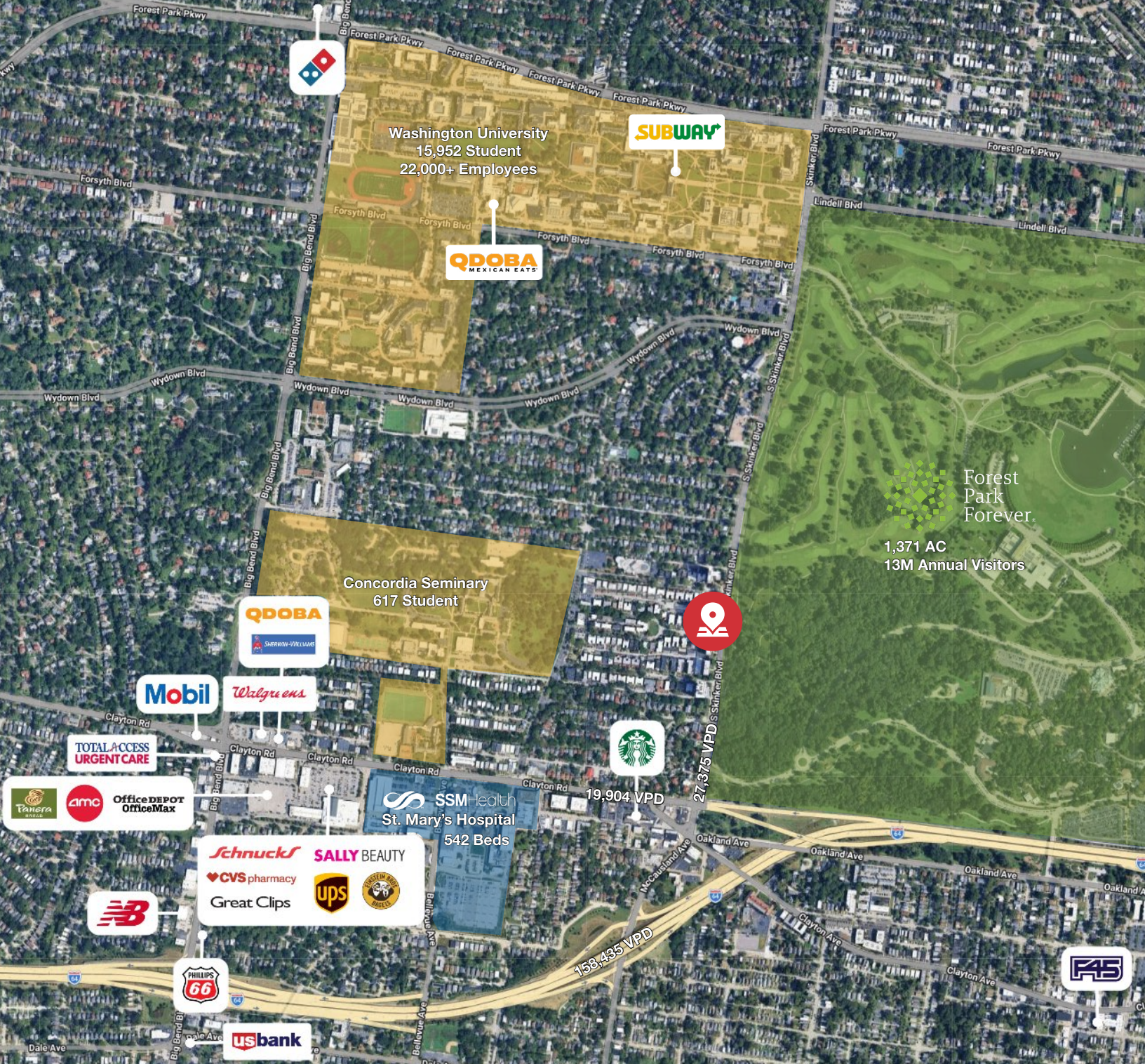


	POPULATION	DAYTIME POPULATION	AVG. HH INCOME	HOUSEHOLDS
<b>1 MILE</b>	14,516	10,758	\$163,271	5,651
<b>3 MILES</b>	139,066	105,493	\$137,820	68,258
<b>5 MILES</b>	349,893	342,452	\$130,233	164,510



# Floor Plans





**William Barnes**

d (314) 994 - 4401  
 c (314) 578 - 1708  
 wbarnes@naidesco.com



**Michelle Goodwin, CCIM**

d (314) 994 - 4944  
 c (636) 236 - 9802  
 mgoodwin@naidesco.com



**NAIDESCO**

8112 Maryland Ave, Suite 300  
 St. Louis, MO 63105  
 (314) 994 - 4800

[naidesco.com](http://naidesco.com)

No warranty or representation, express or implied, is made as to the accuracy of the information contained herein, and the same is submitted subject to errors, omissions, changes in price, rental, or other conditions, prior sale, lease, or financing, or withdrawal without notice, and any special listing conditions imposed by our principals. No warranties or representations are made as to the condition of the property or any hazards contained therein, nor are any to be implied.