

Office Space  
Reimagined

**301**

NORTH LAKE AVE

PASADENA, CALIFORNIA



KIDDER.COM

BARKER PACIFIC GROUP

**km** Kidder  
Mathews

*Premium office suites for lease,  
offering breathtaking views of the  
Pasadena skyline*

Unparalleled access to the 210 Freeway and  
Metro Gold Line station

Direct building access from subterranean  
parking levels

Onsite conference center

Wifi-enabled outdoor courtyard

Onsite management and leasing

Walk score of 92 with abundant restaurant and  
retail amenities

EV charging stations with complimentary charging

24-hour security and 24/7 building access

**3/1,000 PARKING RATIO**

**\$105**

UNRESERVED

**\$110**

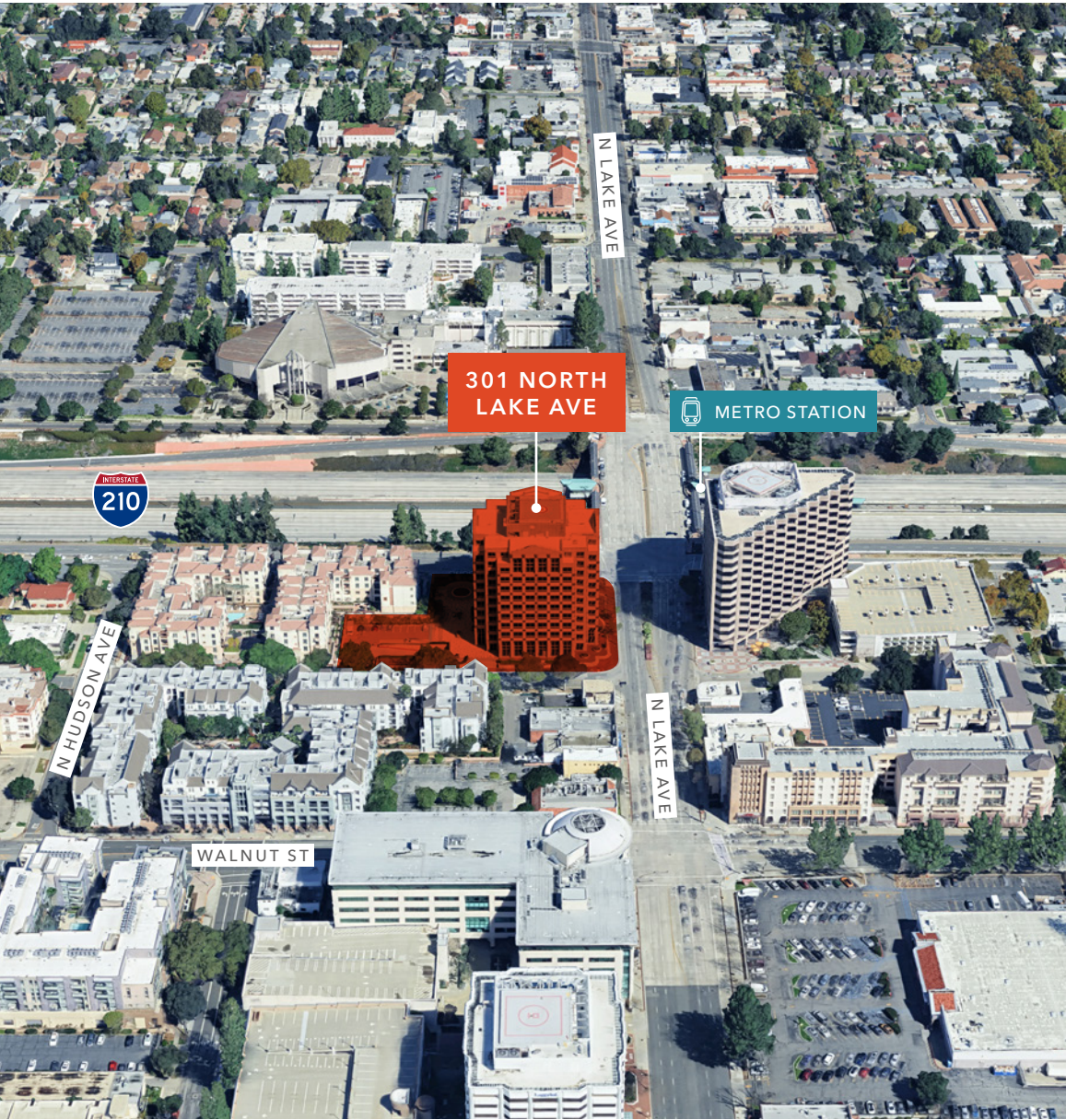
TANDEM RESERVED

**\$150**

RESERVED



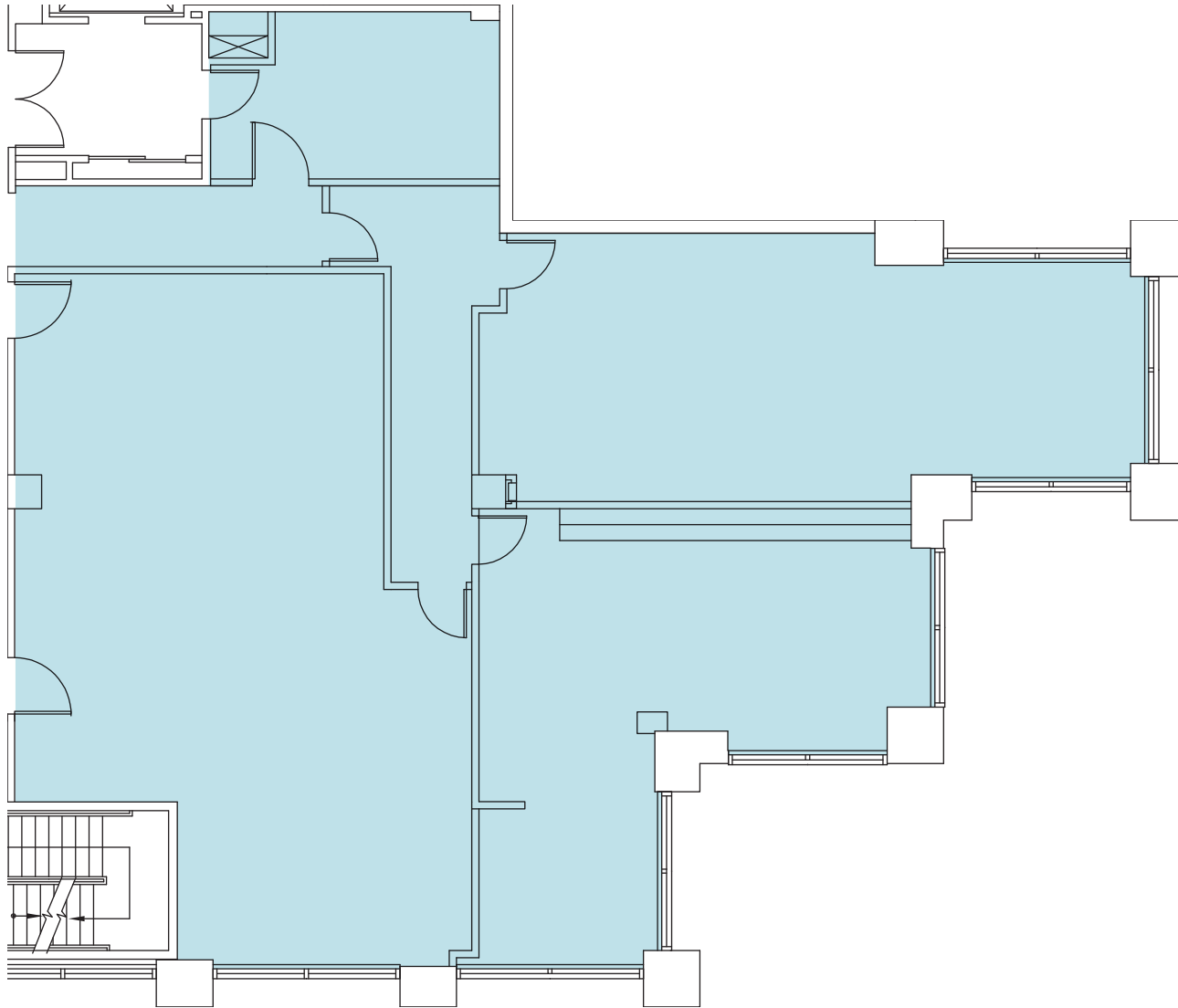
301 NORTH LAKE AVE



## SUITE AVAILABILITY

Suite	RSF	Rate (FSG)	Description
200	3,443	\$3.75 RSF/mo	Corner suite along Lake Avenue. Suite is customizable to tenant's specifications.
202	3,265	\$3.75 RSF/mo	Move-in ready north facing spec suite with double door identity, 3 window offices, conference room, break area, open work area and reception.
305	1,805	\$3.75 RSF/mo	Northeast suite customizable to tenant's specifications.
320	2,021	\$3.75 RSF/mo	3 window offices, glass conference room, break area, open work area and reception. Contiguous with Suite 340 to 4,677 RSF.
340	2,656	\$3.75 RSF/mo	Double door entry with 4 window offices, glass conference room, break area, open work area and reception. Contiguous with Suite 320 to 4,677 RSF.
420	3,278	\$3.75 RSF/mo	8 window offices, conference room, break room, storage, open work area and reception. Contiguous with Suite 430 to 7,540 RSF.
430	4,262	\$3.75 RSF/mo	Double-door identity with 4 offices and open work area. Suite is customizable to tenant's specifications. Contiguous with Suite 420 to 7,540 RSF.
650	5,909	\$3.75 RSF/mo	Suite customizable to tenant's specifications with 8 existing window offices.
815	2,972	\$3.75 RSF/mo	Move-in ready suite with 4 window offices, conference room, break area, open work area and reception. Contiguous with Suite 820 to 8,571 RSF.
820	5,599	\$3.75 RSF/mo	Double-door identity with 9 window offices, 2 interior offices, conference room, break room, storage/work room, open work area and reception. Contiguous with Suite 815 to 8,571 RSF.

## SUITE 200



---

*3,443 RSF*

AVAILABLE

---

*\$3.75 FSG*

LEASE RATE (RSF/MO)

---

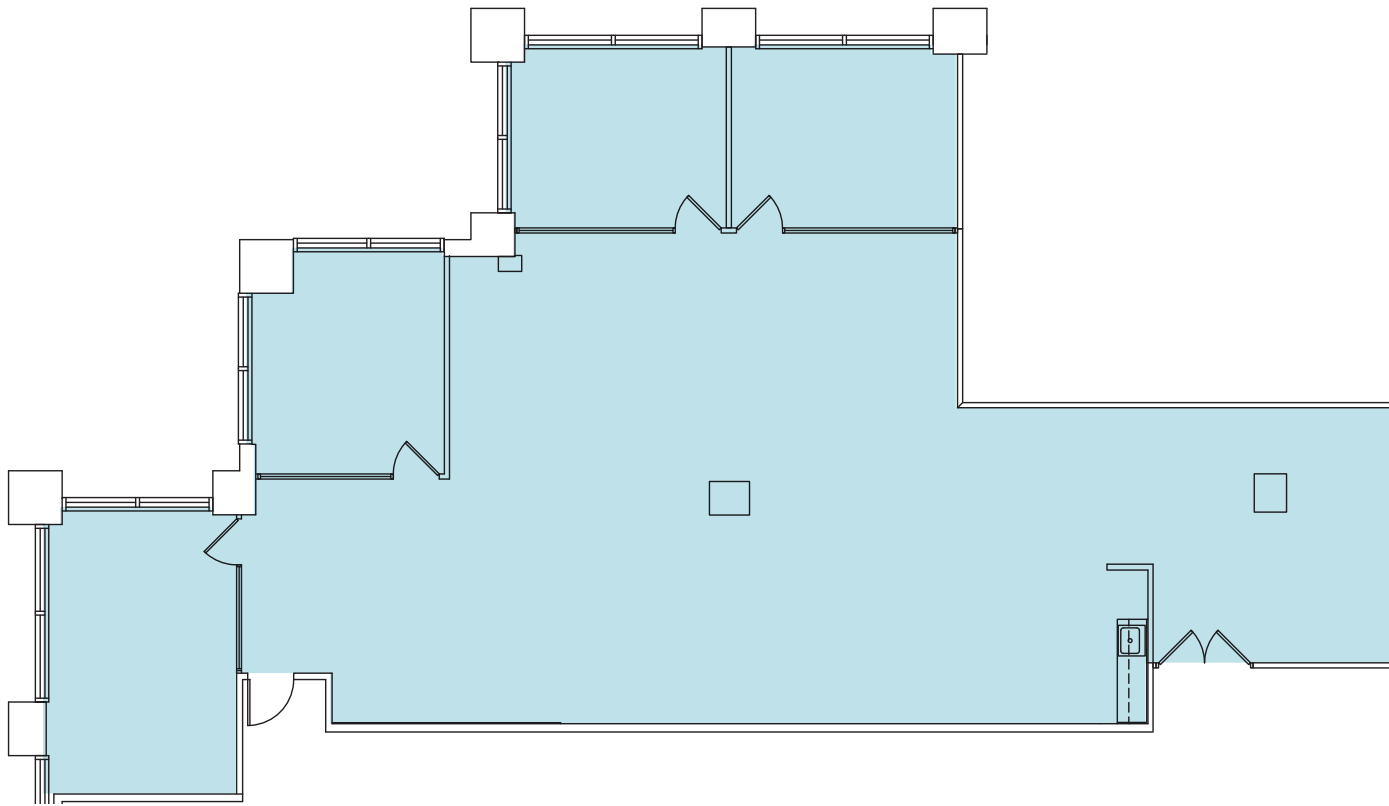
*NOW*

AVAILABLE

*Corner suite along  
Lake Avenue. Suite  
is customizable to  
tenant's specifications.*

301 NORTH LAKE AVE

## SUITE 202 | MOVE-IN READY SPEC SUITE



*3,265 RSF*

AVAILABLE

*\$3.75 FSG*

LEASE RATE (RSF/MO)

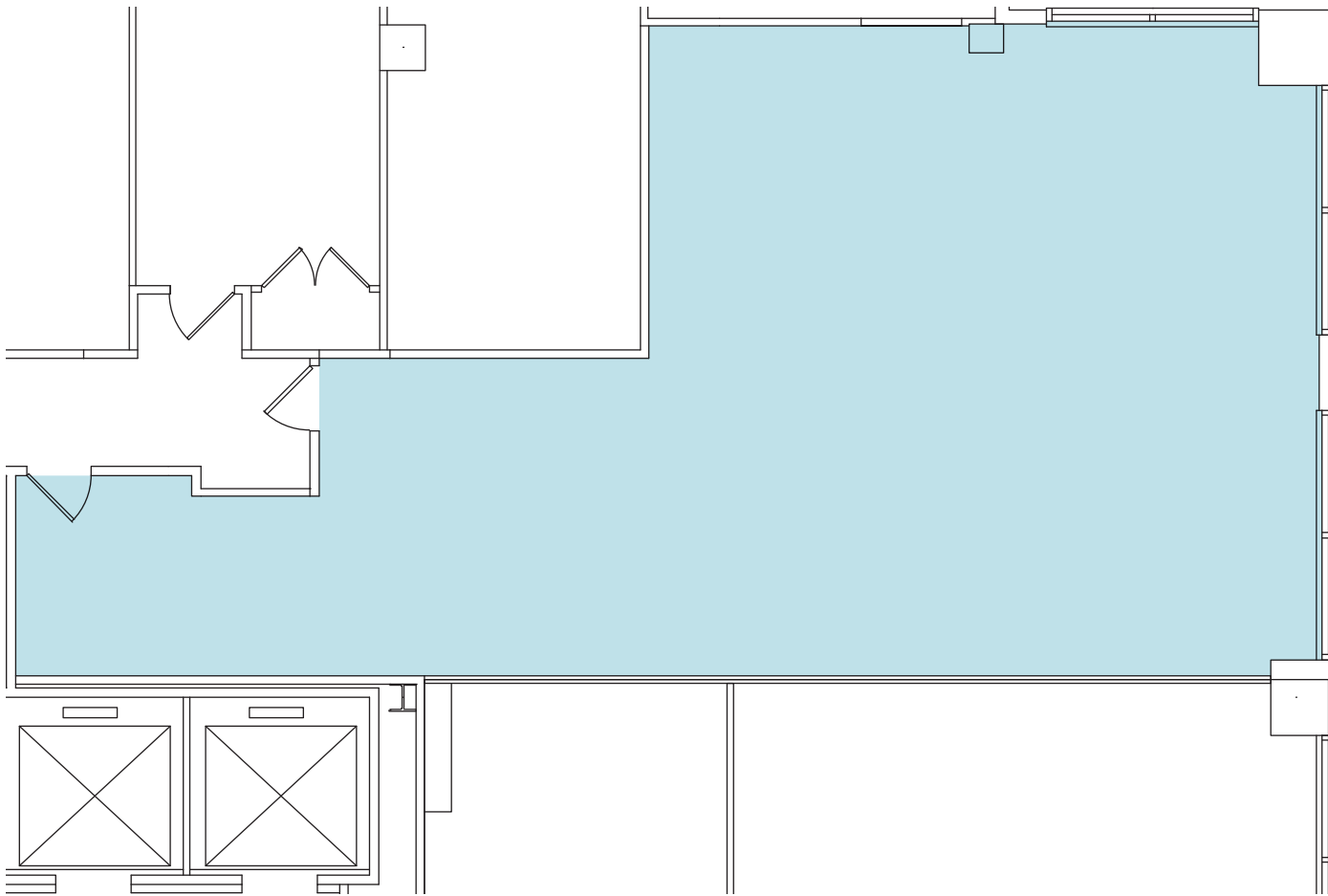
*NOW*

AVAILABLE

AVAILABLE FOR LEASE

KIDDER MATHEWS

## SUITE 305



*1,805 RSF*

AVAILABLE

*\$3.75 FSG*

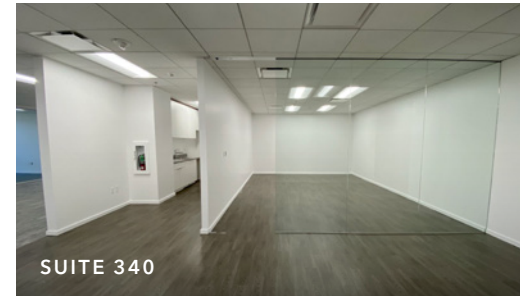
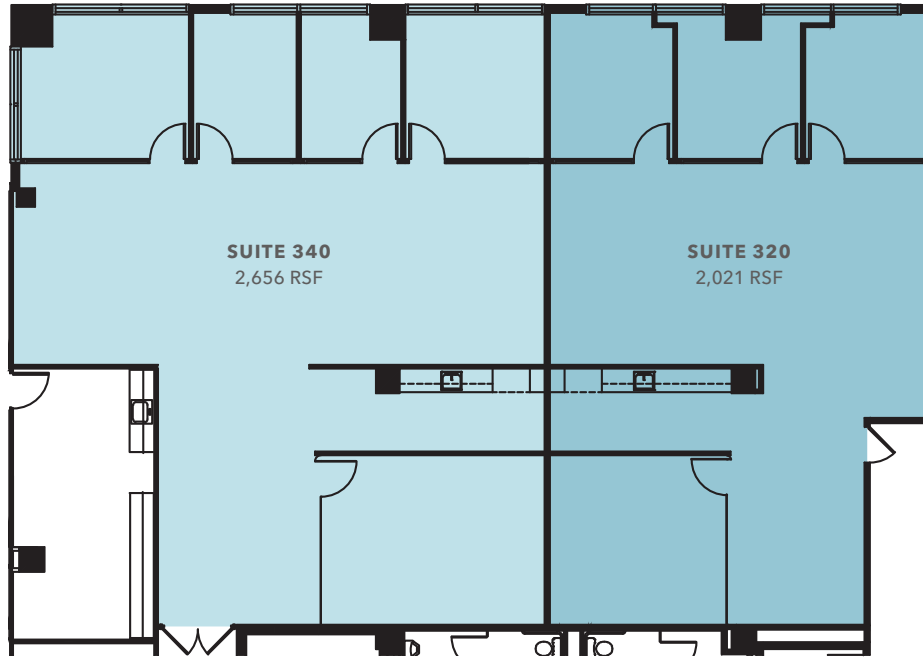
LEASE RATE (RSF/MO)

*NOW*

AVAILABLE

*Northeast suite  
customizable to  
tenant's specifications.*

# SUITES 320 & 340

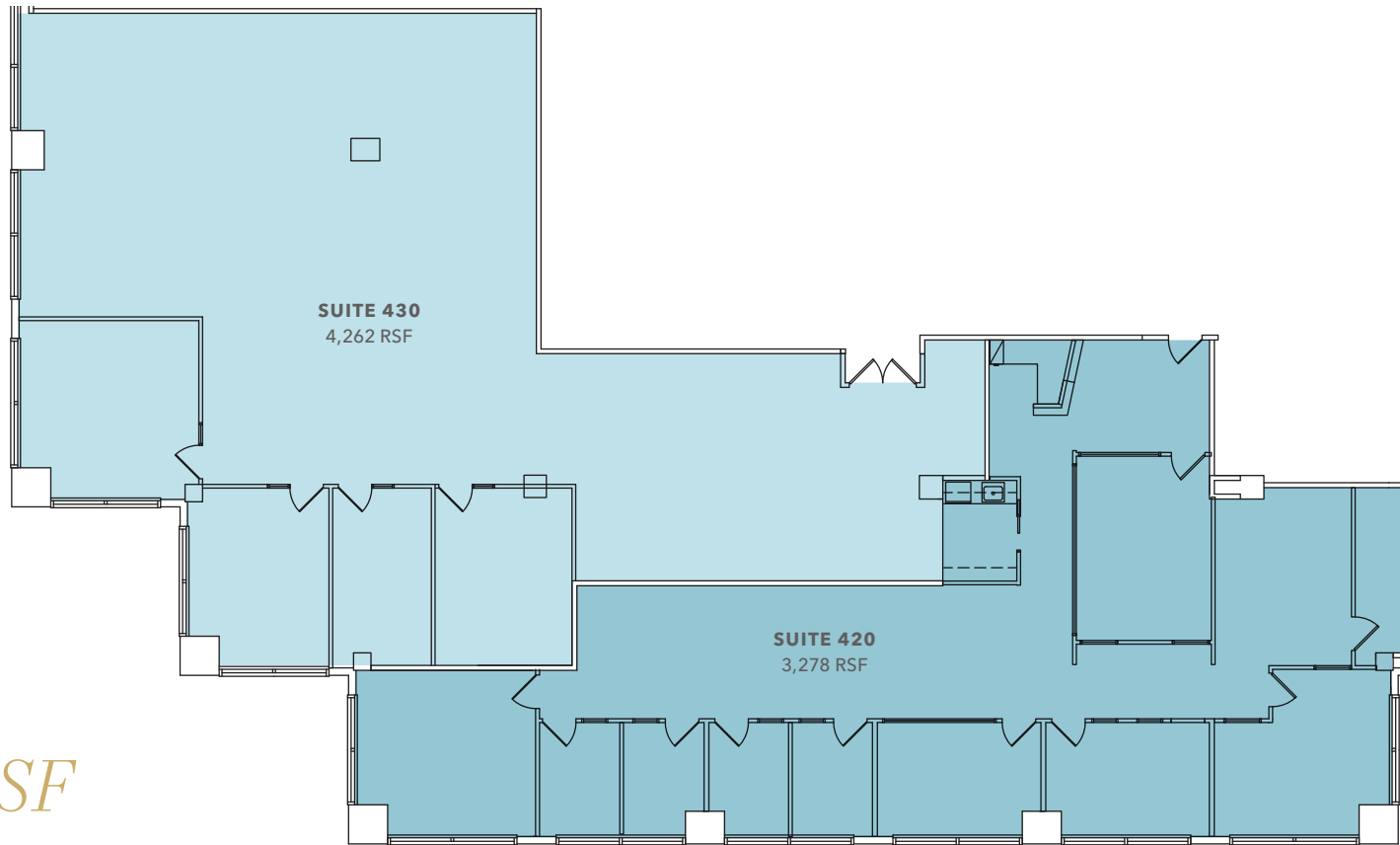


**4,677 RSF**

CONTIGUOUS SPACE

Suite	RSF	Rate (FSG)	Description
320	2,021	\$3.75 RSF/mo	3 window offices, glass conference room, break area, open work area and reception. Contiguous with Suite 340 to 4,677 RSF.
340	2,656	\$3.75 RSF/mo	Double door entry with 4 window offices, glass conference room, break area, open work area and reception. Contiguous with Suite 320 to 4,677 RSF.

## SUITES 420 & 430

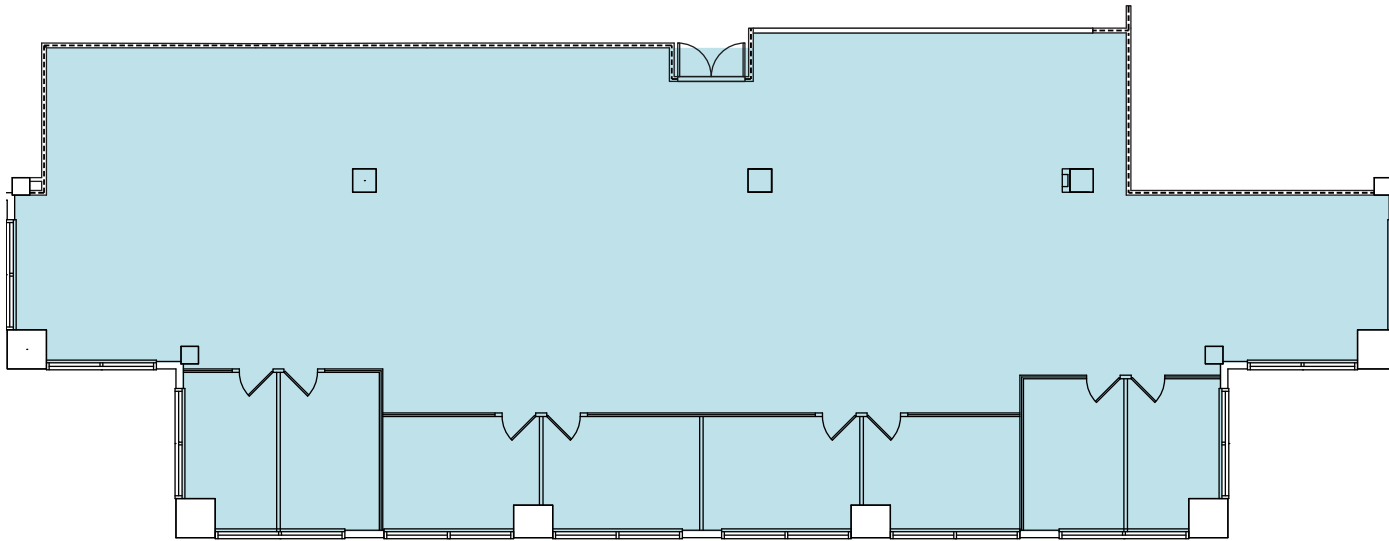


**7,540 RSF**

CONTIGUOUS SPACE

Suite	RSF	Rate (FSG)	Description
420	3,278	\$3.75 RSF/mo	8 window offices, conference room, break room, storage, open work area and reception. Contiguous with Suite 430 to 7,540 RSF.
430	4,262	\$3.75 RSF/mo	Double-door identity with 4 offices and open work area. Suite is customizable to tenant's specifications. Contiguous with Suite 420 to 7,540 RSF.

## SUITE 650



5,909 RSF

AVAILABLE

\$3.75 FSG

LEASE RATE (RSF/MO)

NOW

AVAILABLE

*Suite customizable to tenant's specifications with 8 existing window offices.*

# SUITES 815 & 820

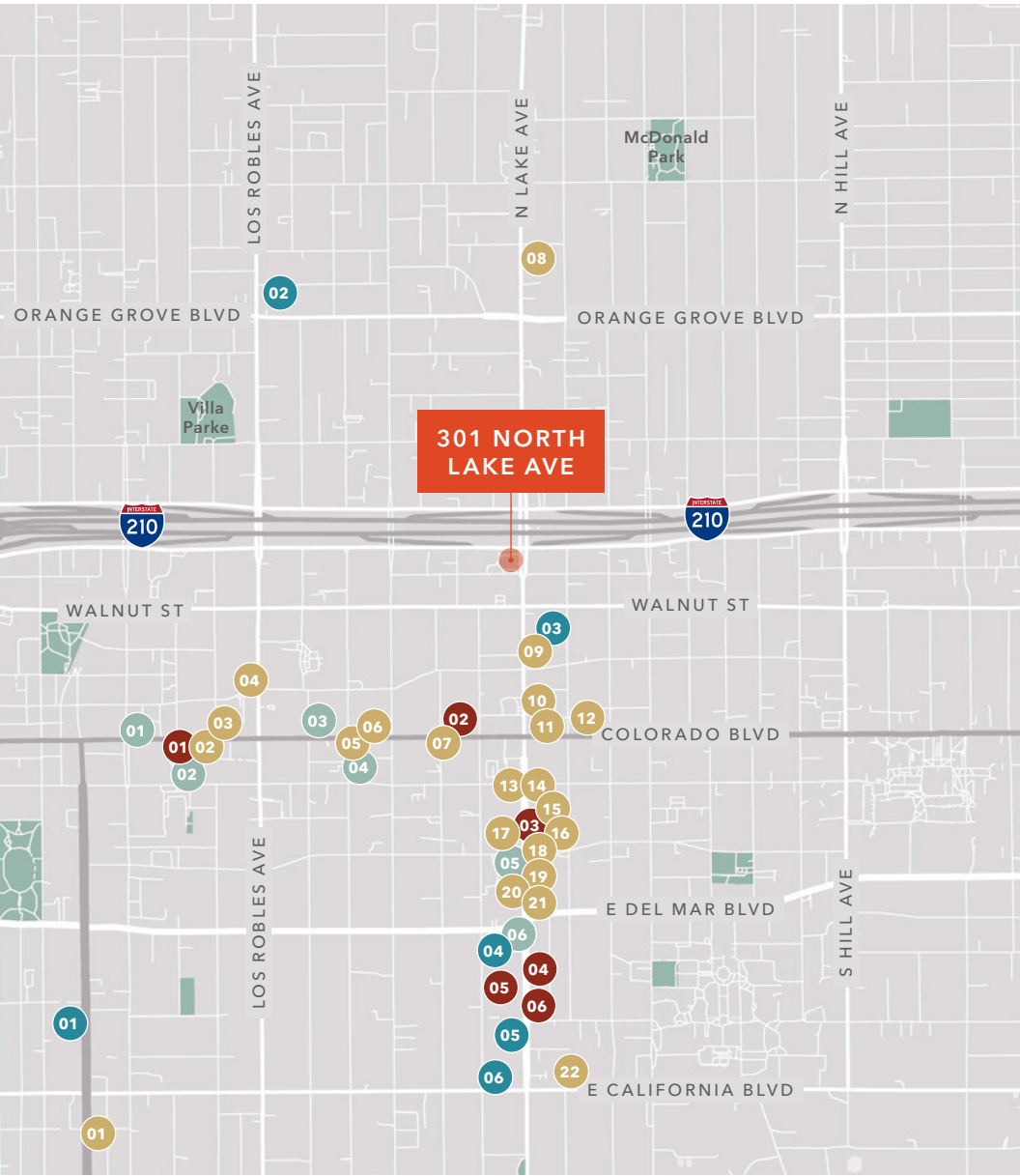


**8,571 RSF**

CONTIGUOUS SPACE



Suite	RSF	Rate (FSG)	Description
815	2,972	\$3.75 RSF/mo	Move-in ready suite with 4 window offices, conference room, break area, open work area and reception. Contiguous with Suite 820 to 8,571 RSF.
820	5,599	\$3.75 RSF/mo	Double-door identity with 9 window offices, 2 interior offices, conference room, break room, storage/work room, open work area and reception. Contiguous with Suite 815 to 8,571 RSF.



## NEARBY AMENITIES

### EAT & DRINK

- 01 Lucky Boy
- 02 Yard House
- 03 Ruth's Chris Steak House
- 04 California Pizza Kitchen
- 05 Urth Caffe
- 06 Tender Greens
- 07 Nine & Nine Thai Kitchen
- 08 Chick-fil-A
- 09 Go China Restaurant
- 10 Settebello Pizzeria Napoletana
- 11 Oh La La
- 12 Artisanal Goods by CAR
- 13 Republik Coffee
- 14 Nosy Neighbors Coffee
- 15 Sugarfish
- 16 Philz Coffee
- 17 Celestino Ristorante & Bar
- 18 UOVO
- 19 Mendocino Farms
- 20 Urban Plates
- 21 Granville
- 22 Pie 'n Burger

### SHOPPING

- 01 The Paseo
- 02 Target
- 03 The Commons
- 04 The Burlington Arcade
- 05 The Shops on Lake Avenue
- 06 Ross

### GROCERY

- 01 Whole Foods
- 02 Baja Ranch Market
- 03 Ralphs
- 04 Trader Joes
- 05 Erewhon
- 06 Pavilions

### FITNESS

- 01 Hot 8 Yoga
- 02 Equinox
- 03 24 Hour Fitness
- 04 Anytime Fitness
- 05 LA Fitness
- 06 Planet Fitness

# 301 NORTH LAKE AVE

---

*For leasing information, please contact:*

**SCOTT UNGER**

626.873.1803

scott.unger@kidder.com

LIC N° 01855517

**BILL BOYD**

626.873.1801

bill.boyd@kidder.com

LIC N° 00816177

**LINDA LEE**

626.873.1802

linda.lee@kidder.com

LIC N° 01278768

**KIDDER.COM**

This information supplied herein is from sources we deem reliable. It is provided without any representation, warranty, or guarantee, expressed or implied as to its accuracy. Prospective Buyer or Tenant should conduct an independent investigation and verification of all matters deemed to be material, including, but not limited to, statements of income and expenses. Consult your attorney, accountant, or other professional advisor. All Kidder Mathews designs are the sole property of Kidder Mathews. Branded materials and layouts are not authorized for use by any other firm or person.

