

FOR LEASE



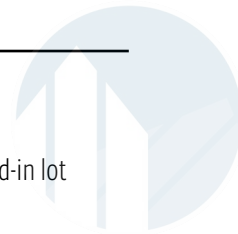
ASKING PRICE: \$1,950 /MONTH GROSS + UTILITIES

SUITE #101 | SPACE DETAILS:

| | |
|-------------------------|--------------------|
| Space Available: | +/- 1,120 SF |
| Heat: | Gas |
| Power: | 200 Amps |
| Occupancy: | Immediate |
| Lease Term: | Negotiable |
| RE Taxes: | Base Year Included |

OFFICE SPACE | Excellent Condition!

Space located at the front east-side corner of the building
 Can create 550 sf of warehouse space
 Part of a +/- 6,750 sf multi-tenanted flex building situated on a +/- 0.38 acre fenced-in lot
 Close proximity to LIRR Stations (Huntington Station & Cold Spring Harbor)



For further information or to arrange an inspection, please contact exclusive broker(s):

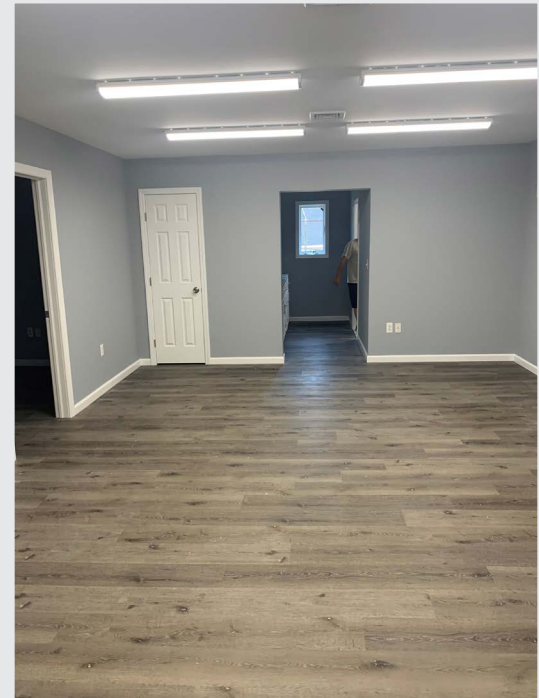
ALBERTO FIORINI
 Managing Principal
 (631) 392-0784 Ext. 102
 (516) 652-7159 Cell
afiorini@alliancerealestate.info

SCOTT HARZ
 Associate
 (631) 392-0784 Ext. 114
 (631) 495-4474 Cell
sharz@alliancerealestate.info

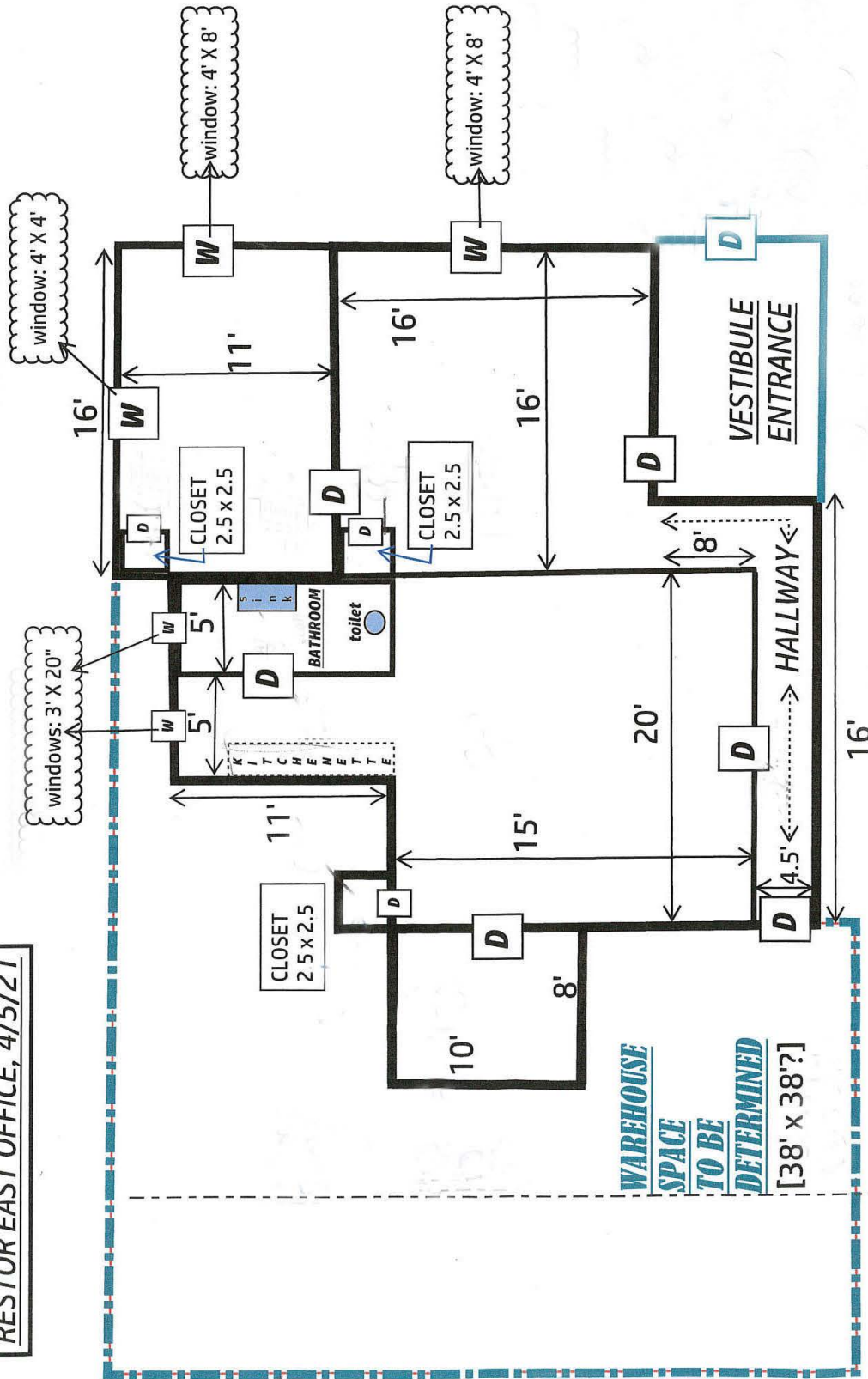
44 W. Jefryn Blvd, Suite M
 Deer Park, NY 11729
 P: 631-392-0784
 F: 631-392-0785
www.alliancerealestate.info



**E
X
C
L
U
S
I
V
E**



RESTOR EAST OFFICE, 4/5/21



1,120 SF

D= DOOR
W= WINDOW

