

# ±3,200 SF INDUSTRIAL SPACE AVAILABLE FOR SUBLEASE

9420 ACTIVITY ROAD, SUITES I & J, SAN DIEGO, CA 92126



DANNY ROGERS  
Lic. #02194441 | 858.458.3316  
drogers@voitco.com

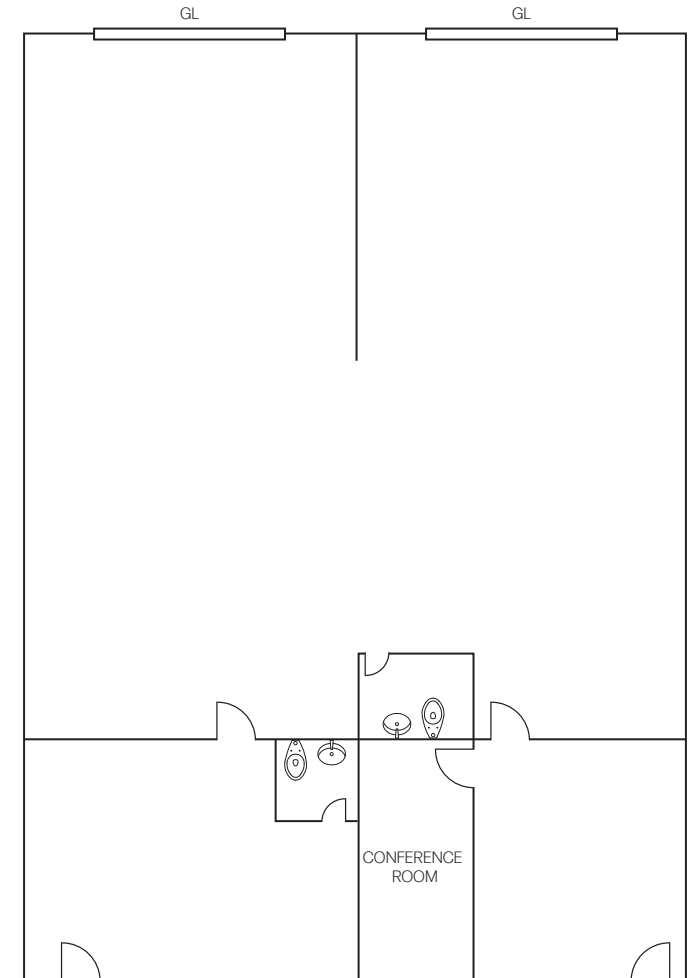
***Voit***  
REAL ESTATE SERVICES

## AVAILABILITY OVERVIEW

- » ±3,200 SF industrial suite available for sublease
- » Sublease Expiration: March 31, 2026
- » Sublease Rate: \$1.50 NNN + ±\$0.34 Operating Expenses
- » Available With 30 day notice

## PROPERTY OVERVIEW

- » Two grade level doors
- » 13' clear height
- » Direct deal possible
- » Easy access to I-15 and I-805
- » Located at the signalized intersection of Black Mountain and Activity Road
- » 3.1/1,000 SF parking ratio
- » Close proximity to numerous restaurants, retail amenities and public transportation
- » Responsive and strong local ownership and property management



## DANNY ROGERS

Lic. #02194441 | 858.458.3316 | drogers@voitco.com

4180 La Jolla Village Drive, Suite 100, La Jolla, CA 92037 | 858.453.0505 858.408.3976 F | Lic #01991785 | www.voitco.com

Licensed as a Real Estate Salesperson by the DRE. The information contained herein has been obtained from sources we deem reliable. While we have no reason to doubt its accuracy, we do not guarantee it. ©2025 Voit Real Estate Services, Inc. All Rights Reserved.