



HARPURHEY

# Harpurhey Shopping Centre - 9 (Unit 4)



## LOCATION

The premises occupy a prominent position near to Iceland, The Post Office and adjacent to William Hill.

## CAR PARKING

Free 500 space shoppers car park.

## LEASE

The premises are available on a new FRI lease for a term to be agreed.

## RENT

£28,500 pax

## SERVICE CHARGE

£3,000 per annum

## ACCOMODATION

The premises are arranged over ground floor only and provide the following floor areas:

Ground Floor: 1,186 sq ft

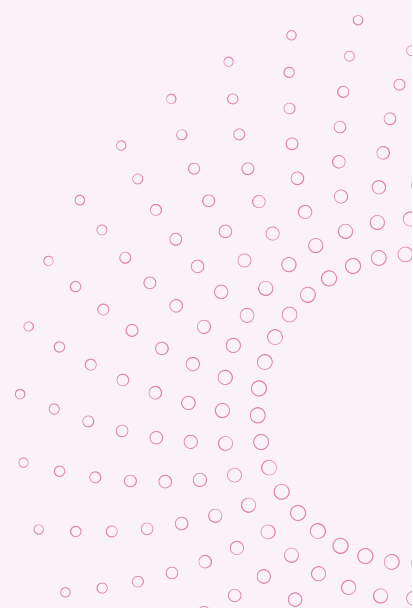
## BUSINESS RATES

The Valuation Office have confirmed the premises have been assessed for rates, as follows:

Rateable Value (2023): £17,500

## ENERGY PERFORMANCE CERTIFICATE

An EPC is available upon request.



# HARPURHEY SHOPPING CENTRE - 9 (UNIT 4)

