

# FOR LEASE

## 10552 WHYTE AVENUE



NEW  
NEW  
NEW

| 10552 82 Avenue | Edmonton, AB | T6E 2A4

### PROPERTY HIGHLIGHTS

- ★ Prime Whyte Avenue Retail Opportunity
- ★ 3213 SQ FT.
- ★ High-traffic retail corridor
- ★ Surrounded by established retailers, restaurants, and daily foot traffic.
- ★ expansive front-facing windows providing excellent natural light and prominent street visibility.



**David J. Olson**  
Director  
MUVE Commercial/EXP Realty  
Mobile: (780)908-1650  
Email: [Davidolson@muveteam.com](mailto:Davidolson@muveteam.com)

**FOR LEASE**

**10552 WHYTE AVENUE**



**ADDITIONAL INFORMATION**

**BUILDING SIZE: TOTAL: 3213 SQFT**

**LEGAL DESCRIPTION: Plan: 1  
Block: 66  
Lot: 16**

Amazing opportunity to place your business in the centre of Old Strathcona's dynamic shopping and entertainment district, steps from popular destinations, transit routes, and year-round pedestrian activity. Ideal for retail, boutique fitness, specialty services, or experiential concepts seeking high exposure in one of Edmonton's most sought-after commercial locations.



**David J. Olson**  
Director

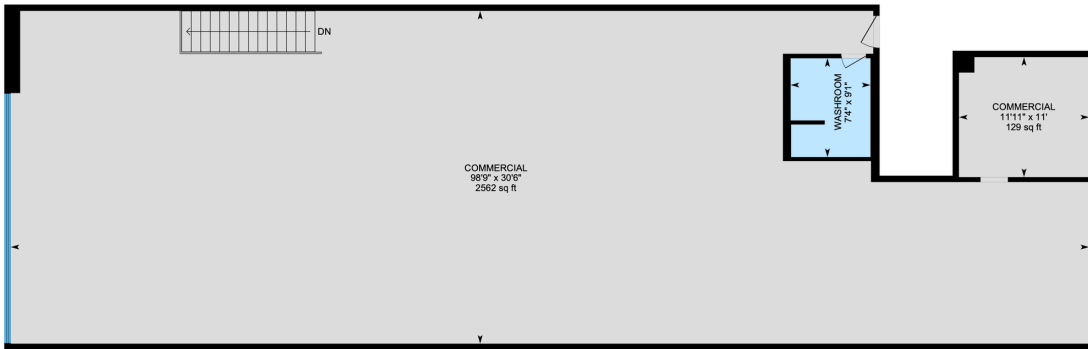
MUVE Commercial/EXP Realty

Mobile: (780)908-1650

Email: [Davidolson@muveteam.com](mailto:Davidolson@muveteam.com)



# FOR LEASE 10552 WHYTE AVENUE



For property details,  
contact David Olson at  
780-908-1650



David J. Olson  
Director  
MUVE Commercial/EXP Realty  
Mobile: (780)908-1650  
Email: [Davidolson@muveteam.com](mailto:Davidolson@muveteam.com)