



## Second Floor Dental ready space available in Huntington Beach

### Suite 209 Features

- Second Floor space - ±1,975 SF
- 3 dental operatories
- Private office space
- Dedicated dental Laboratory area
- On-site restroom
- Comfortable waiting area



Class-B Medical office building



100% Medical



Upscale demographics



In close proximity to the 5 Points Shopping Plaza



Ample patient parking

## Get more information

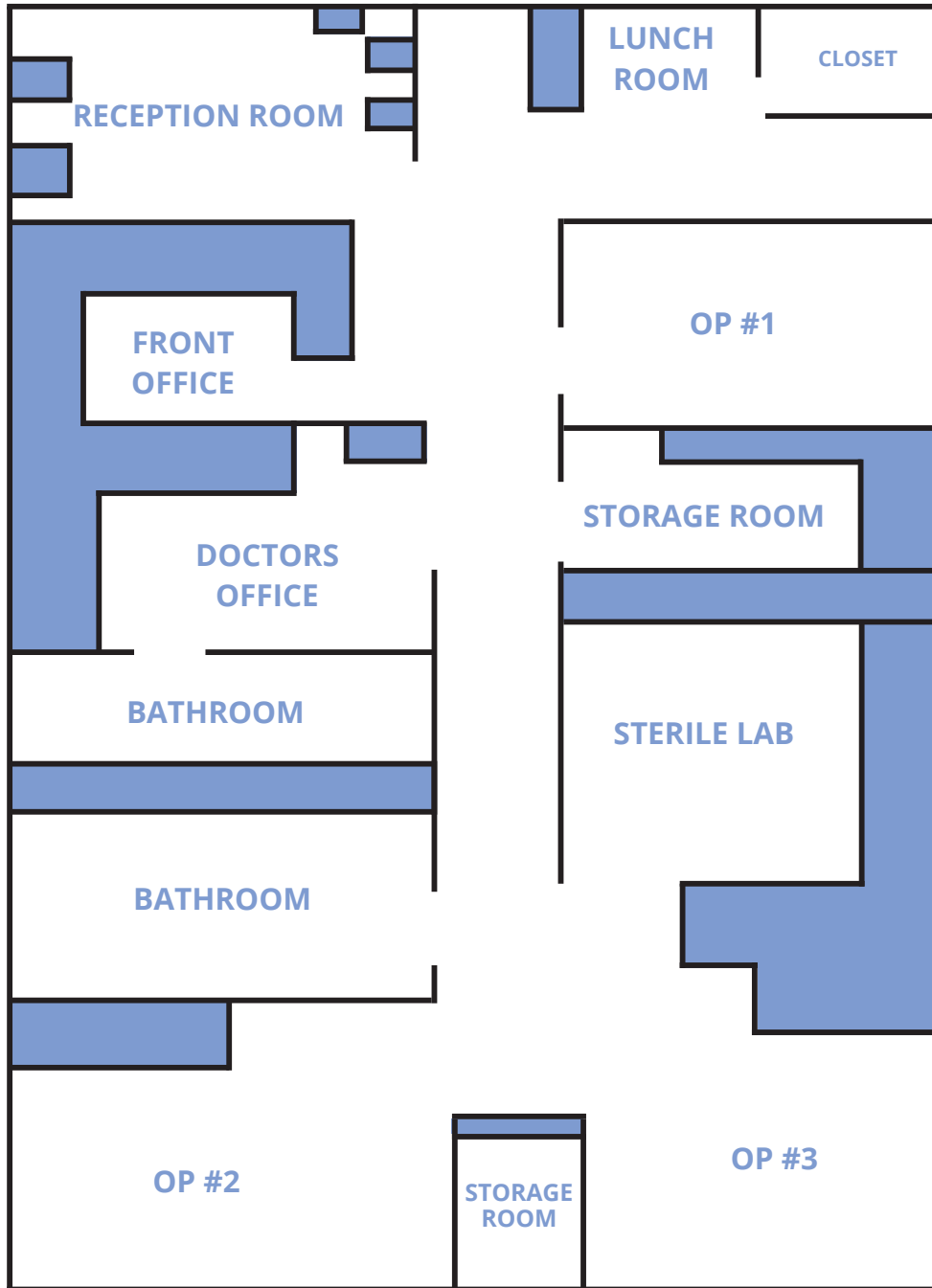
**Eileen Doody**  
Principal, Leasing and Brokerage  
eileen.doody@avisonyoung.com  
949.390.5506  
CA DRE Lic. # 00965140

1 Park Plaza, Suite 100  
Irvine, CA 92614

[avisonyoung.com](http://avisonyoung.com)

# Floor Plan

2<sup>ND</sup> FLOOR | SUITE 209 - ±1,975 SF



**Get more  
information**

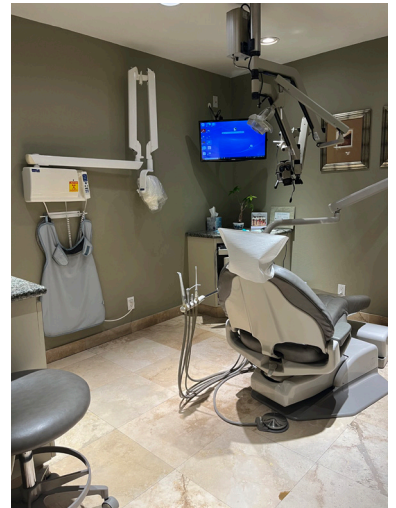
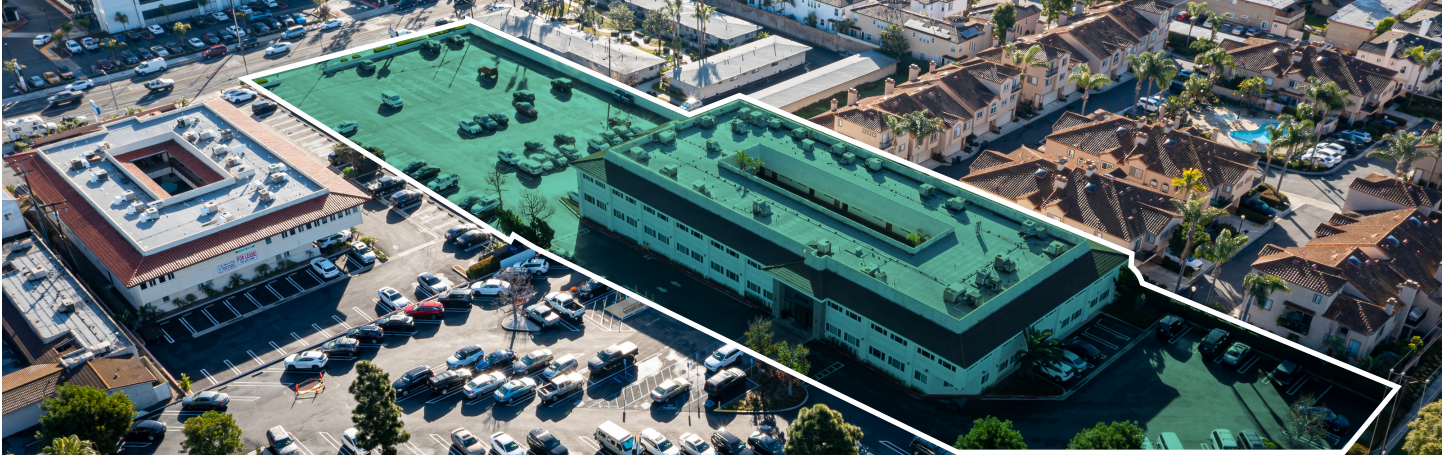
**Eileen Doody**  
Principal, Leasing and Brokerage  
eileen.doody@avisonyoung.com  
949.390.5506  
CA DRE Lic. # 00965140

1 Park Plaza, Suite 100  
Irvine, CA 92614

avisonyoung.com

# Dental Ready Space for Lease

18800 Main Street Medical Center  
Huntington Beach, CA 92648



**Get more  
information**

**Eileen Doody**  
Principal, Leasing and Brokerage  
eileen.doody@avisonyoung.com  
949.390.5506  
CA DRE Lic. # 00965140

1 Park Plaza, Suite 100  
Irvine, CA 92614

avisonyoung.com