

SANTIAGO BUSINESS PARK

FOR SUBLEASE

**1400 GRAVES AVE, UNIT G
OXNARD, CA 93030**

BRETT SAUNDERS

Principal

818.581.7061

bsaunders@lee-re.com

DRE# 01991011

FRANK TESORO

Associate

805.558.8315

ftesoro@lee-re.com

DRE# 01920803



LEE & ASSOCIATES



SIZE:
3,151 SF



LEASE RATE:
\$1.45 PSF GROSS



CLEAR HEIGHT:
24



PARKING
STALLS: 2/1,000



GRADE LOADING
DOORS: 1



ZONING:
ML



POWER:
200 AMP



1400 GRAVES AVE
UNIT G

SAKIOKA DRIVE

RICE AVE / PACIFIC COAST HWY

MAULHARDT AVE

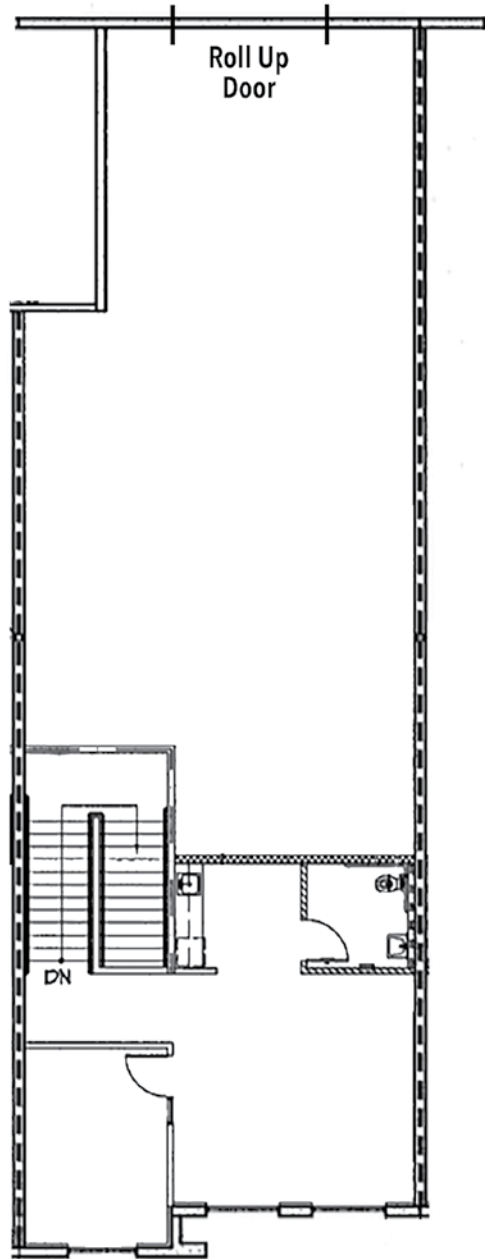
SANTIAGO COURT

GRAVES AVE

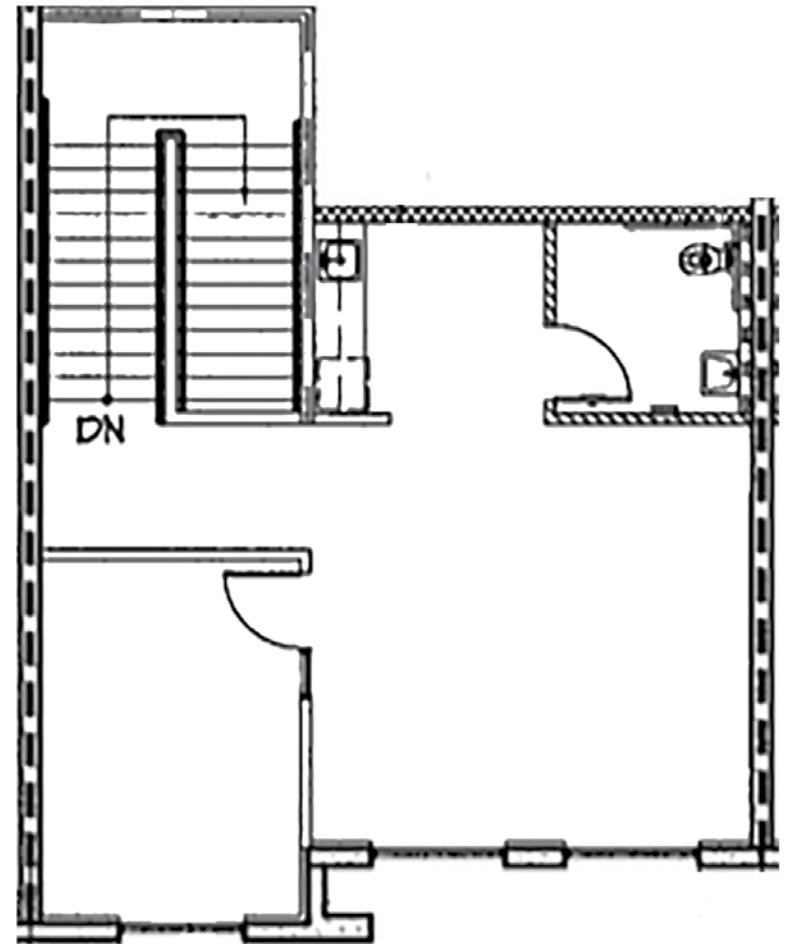
PHOTOS



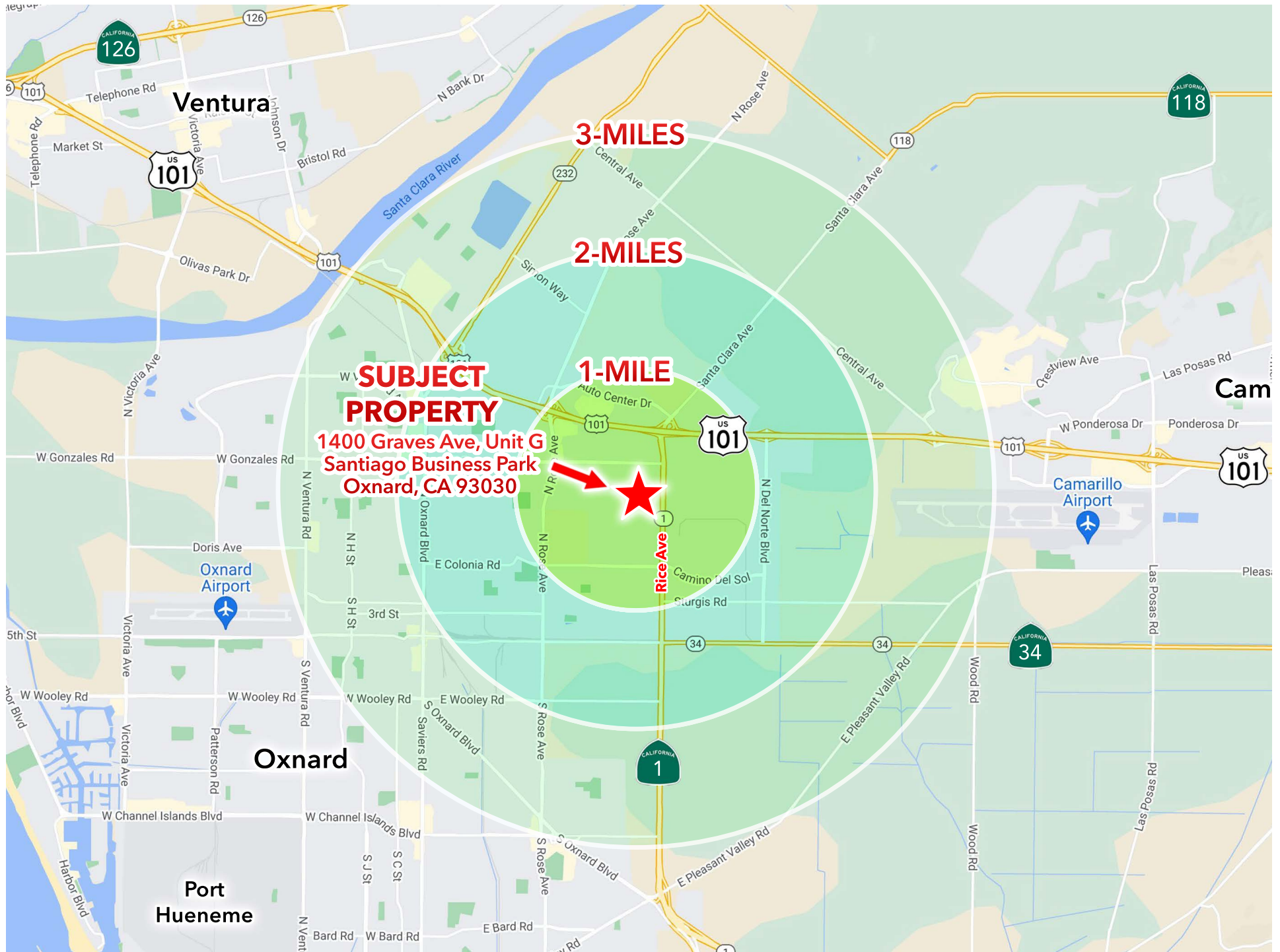
FIRST FLOOR | 2,427 SF



SECOND FLOOR | 724 SF



LOCATOR MAP



2301
SANTIAGO CT

BRETT SAUNDERS
Principal
818.581.7061
bsaunders@lee-re.com
DRE #01991011

FRANK TESORO
Associate
805.558.8315
ftesoro@lee-re.com
DRE #01920803



LEE & ASSOCIATES