

358 ROBBINS DRIVE
TROY, MICHIGAN



**SIGNATURE
ASSOCIATES**
KNOW SIGNATURE | KNOW RESULTS

INDUSTRIAL FOR SALE OR LEASE
9,600 Square Feet Available



PROPERTY FEATURES

- 9,600 square feet available
- 3,288 square feet of office
- 13'1"-13'6" clear height
- (1) 12' x 12' grade level door
- Zoned IB, Integrated Business
- 20 +/- parking spaces
- 1000 amps, 240 volts, buss duct POWER
- Fully air-conditioned shop
- Exhaust fans
- Kitchenette
- Lease possible
- Sale Price: \$1,195,000 (\$124.48/sq. ft.)



For more information, please contact:

PAUL HOGE
(248) 948 0103
paulhoge@signatureassociates.com

LUKE TIMMIS
(248) 359 0608
ltimmis@signatureassociates.com

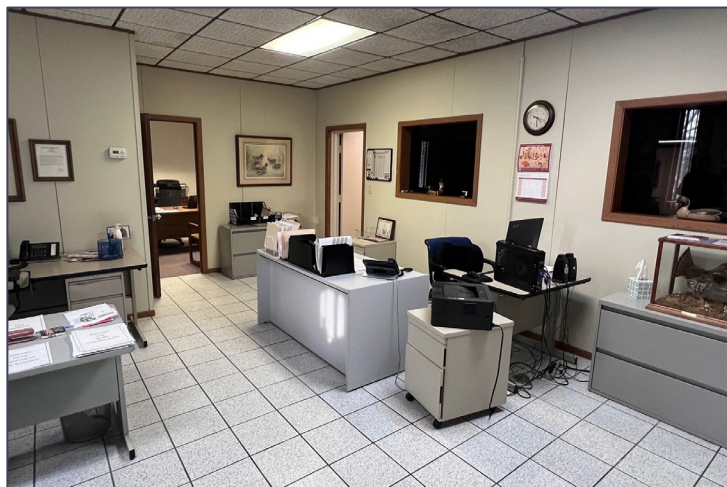
SIGNATURE ASSOCIATES
One Towne Square, Suite 1200
Southfield, MI 48076
www.signatureassociates.com

358 Robbins Drive – Troy, Michigan

Industrial For Sale or Lease

9,600
Square Feet
AVAILABLE

Interior Photos



For more information, please contact:

PAUL HOGE
(248) 948 0103
paulhoge@signatureassociates.com

LUKE TIMMIS
(248) 359 0608
ltimmis@signatureassociates.com

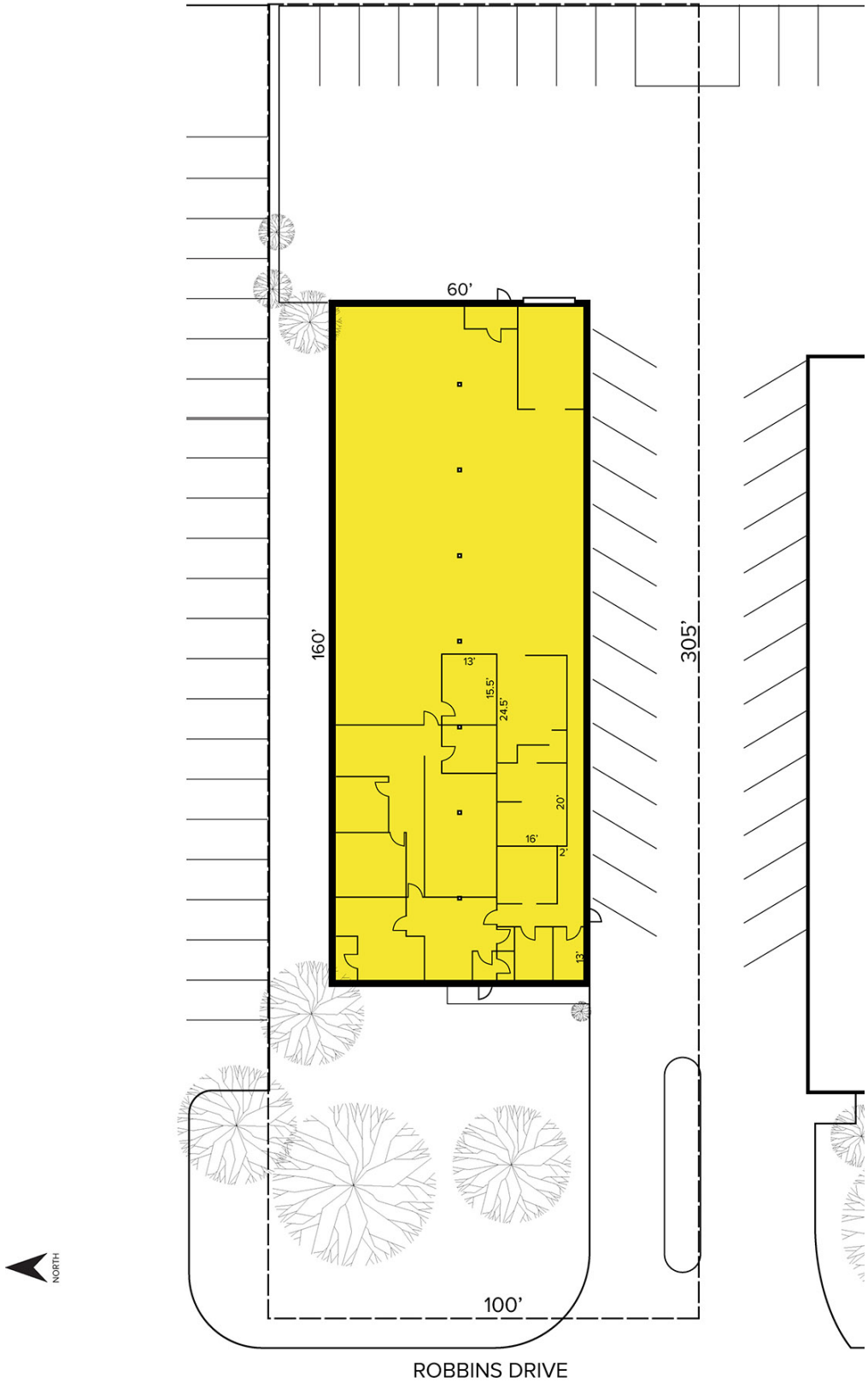
SIGNATURE ASSOCIATES
One Towne Square, Suite 1200
Southfield, MI 48076
www.signatureassociates.com

358 Robbins Drive – Troy, Michigan

Industrial For Sale or Lease

9,600
Square Feet
AVAILABLE

Site Plan



For more information, please contact:

PAUL HOGE
(248) 948 0103
paulhoge@signatureassociates.com

LUKE TIMMIS
(248) 359 0608
ltimmis@signatureassociates.com

SIGNATURE ASSOCIATES
One Towne Square, Suite 1200
Southfield, MI 48076
www.signatureassociates.com

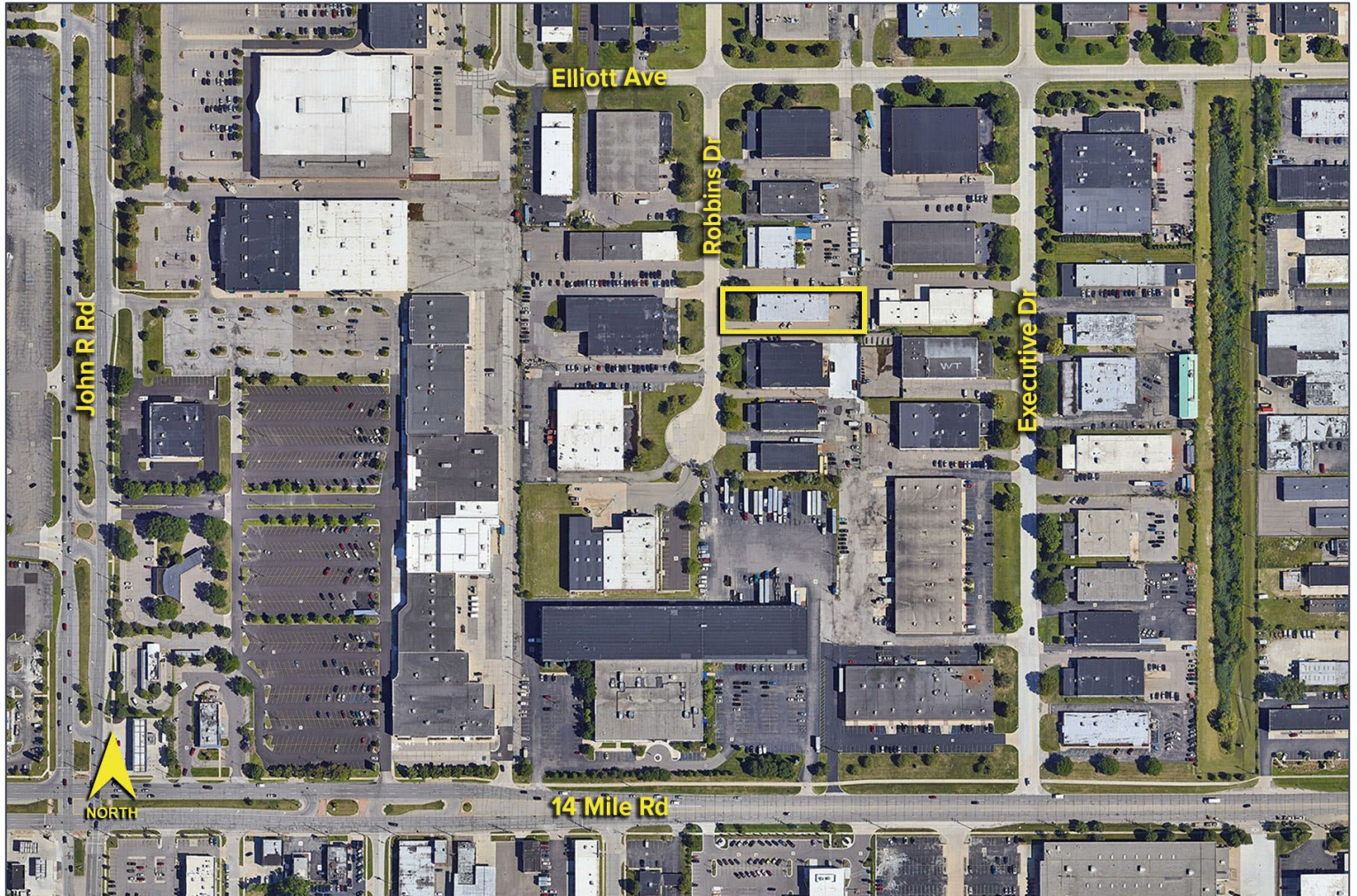
Information is subject to verification and no liability for errors or omissions is assumed. Price is subject to change and listing withdrawal.

358 Robbins Drive – Troy, Michigan

Industrial For Sale or Lease

9,600
Square Feet
AVAILABLE

Aerial



For more information, please contact:

PAUL HOGE
(248) 948 0103
paulhoge@signatureassociates.com

LUKE TIMMIS
(248) 359 0608
ltimmis@signatureassociates.com

SIGNATURE ASSOCIATES
One Towne Square, Suite 1200
Southfield, MI 48076
www.signatureassociates.com