

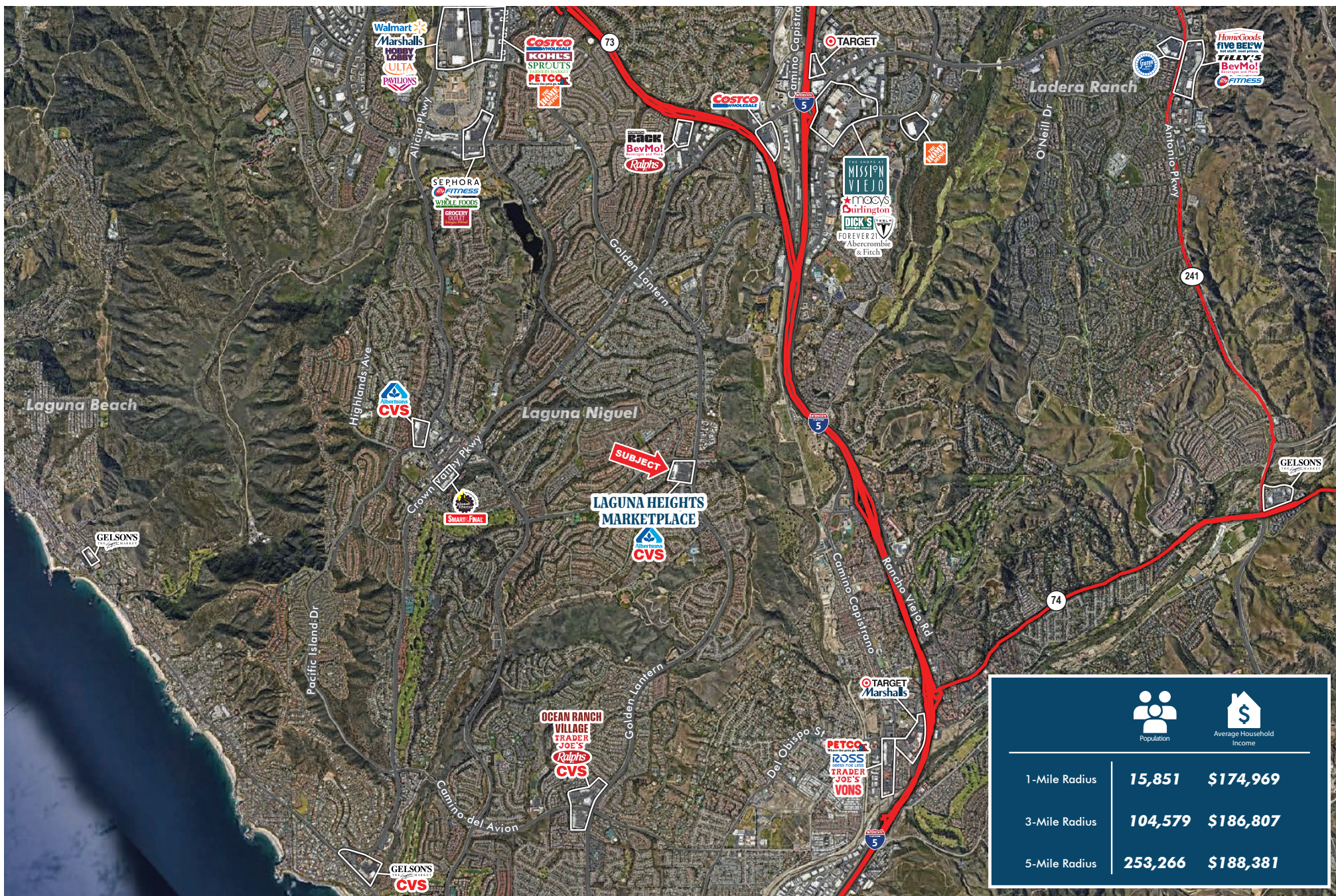




LAGUNA HEIGHTS MARKETPLACE

30201-30311 Golden Lantern, Laguna Niguel, CA



COMPETITION MAP



	 Population	 Average Household Income
1-Mile Radius	15,851	\$174,969
3-Mile Radius	104,579	\$186,807
5-Mile Radius	253,266	\$188,381

OBLIQUE AERIAL & AVAILABLE SPACE



SITE PLAN & ANCHOR TENANTS



BUILDING 30211

A	Menchie's Frozen Yogurt	1,074 SF
B	KAZ Jewelry	1,142 SF
C	Sharkey's Cuts for Kids	1,200 SF
D	Available (Do Not Disturb Tenant)	1,200 SF
E	Parks Salon	600 SF
F	Starbucks Coffee	1,800 SF

BUILDING 30231

A	Cold Rush Wellness	1,571 SF
B	Laguna Heights Optometry	1,305 SF
C	Balance Massage Spa	1,400 SF
D	Laguna Heights Dental	1,400 SF
E	Woof Gang Bakery	1,400 SF
F	Baja Fresh Mexican Grill	1,325 SF

BUILDING 30251

A/B	Marina Hills Animal Hospital	4,478 SF
C	Available (Do Not Disturb Tenant)	1,600 SF
D	Marina Cleaners & Laundry	1,600 SF
E	The UPS Store	1,600 SF
F	Good Choice Sushi	1,600 SF
G	Happy Nails & Spa	1,600 SF
H	F45 Training	2,760 SF
I	Verizon	2,500 SF

BUILDING 30271

A	Mathnasium	1,300 SF
B	HearUSA	1,225 SF
C	Stretch Lab	1,253 SF
D	Asian Kitchen	2,600 SF

BUILDING 30301

A	Thrive Juice Lab	1,124 SF
B	Pure Pilates	1,200 SF
C-D	Available	2,253 SF

OTHER TENANTS

Albertsons	43,480 SF
Berkshire Hathaway HomeServices	5,476 SF
Citibank	4,200 SF
CVS/pharmacy	27,465 SF
OC Dermatology	5,563 SF
Marina View Preschool	7,886 SF
McDonald's	5,200 SF
Optum Medical Group	7,500 SF

LAGUNA HEIGHTS MARKETPLACE

30201-30311 Golden Lantern, Laguna Niguel, CA



Shea Properties

CBRE

CONTACT US

Jeff Nichols

Lic # 01303258

jeff.nichols@cbre.com

949.725.8626

Ryan Sullivan

Lic # 01276308

ryan.sullivan@cbre.com

949.725.8616

Eric Whitmer

Lic # 01949298

eric.whitmer@cbre.com

714.362.7648

Justin McMahon

Lic # 01856260

justin.mcmahon@cbre.com

949.725.8589