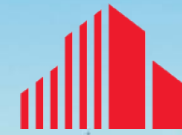


# ±3,920 SF 2-Story Commercial Building

940 S US Highway 1, Fort Pierce, FL 34950



CUSHMAN &  
WAKEFIELD

## SUBJECT

±3,920 SF  
COMMERCIAL  
BUILDING

AADT: 35,000

S US HWY 1



### Douglas Legler

Senior Director  
Mobile: +1 772 405 7778  
Office: +1 772 678 7606  
doug.legler@cushwake.com



### Casey Combs

Director  
Mobile: +1 772 285 8769  
Office: +1 772 678 7611  
casey.combs@cushwake.com

FOR LEASE:

**\$12.00/SF NNN**

## Property Details

Address:	940 S US Highway 1 Fort Pierce, FL 34950
Building Size:	3,920 SF
Rental Rate:	\$12.00/SF NNN
Traffic Count:	35,000 AADT

## Property Summary

This 2-story commercial building offers prime US-1 frontage in the heart of Fort Pierce's main commercial corridor. With approximately 35,000 vehicles passing daily, this location offers high visibility for any incoming business.

Suitable for a variety of uses, this building offers a side staircase with a separate balcony entry for the second floor space.

Near historic downtown Fort Pierce, the location offers proximity to a variety of restaurants, offices, and services that are ideal for future customers while out running errands. Add your business to their to-do list by setting up shop within minutes of their other stops.

Don't miss this prime commercial opportunity. Contact the listing team today.



LOOKING EAST

**SUBJECT**

±3,920 SF  
COMMERCIAL  
BUILDING



S US HWY 1

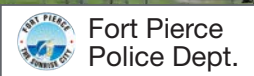
AADT: 35,000



Atlantic Ocean

Indian River

INDIAN HILLS DR

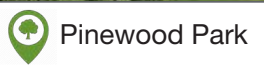


**SUBJECT**  
±3,920 SF  
COMMERCIAL  
BUILDING



S US HWY 1

35,000 AADT



HAYES RD



PINEWOOD DR





ORANGE AVE  
CITRUS AVE



GEORGIA AVE



INDIAN HILLS DR

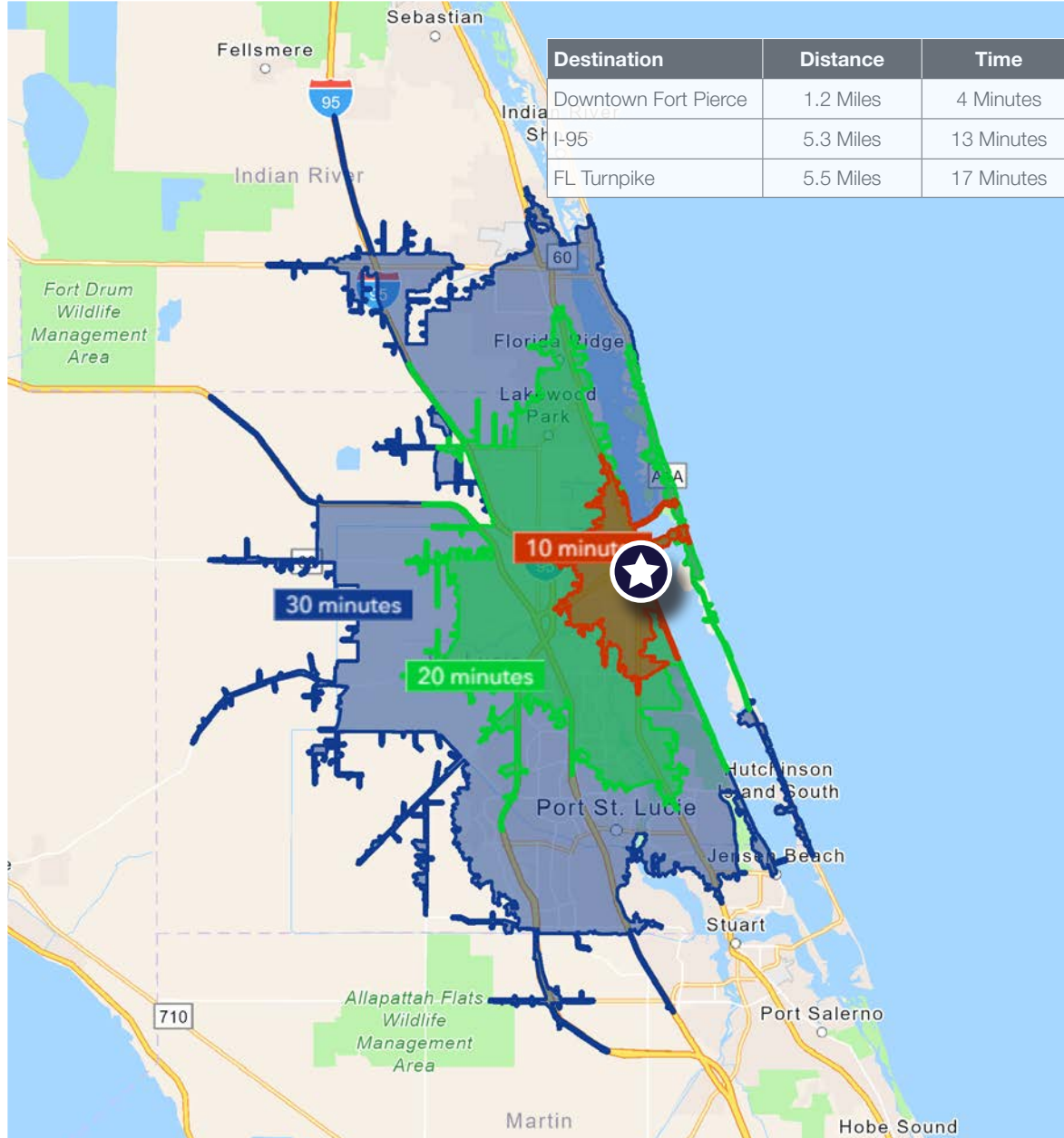


**SUBJECT**  
±3,920 SF  
COMMERCIAL  
BUILDING



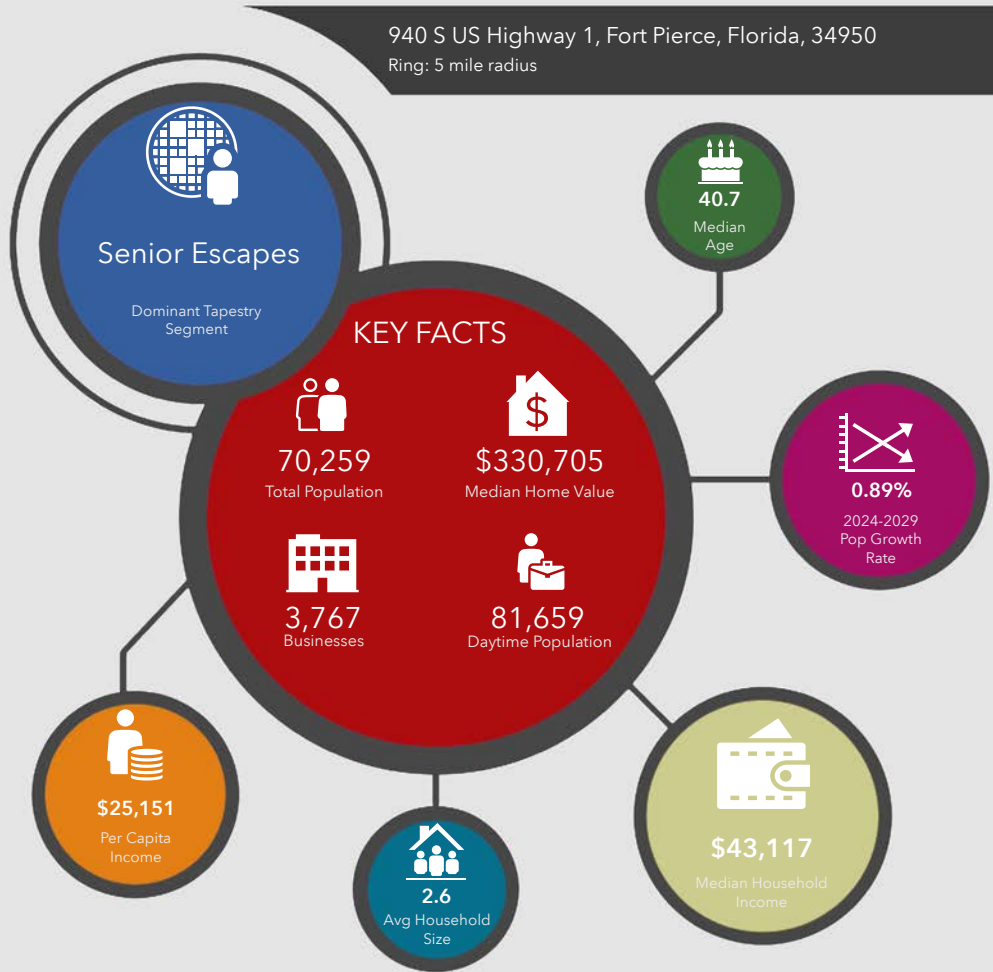
35,000 AADT



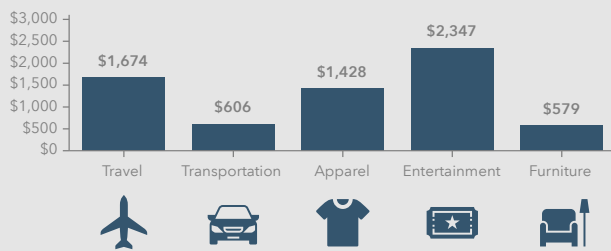


10 Minutes	20 Minutes	30 Minutes
<b>49,352</b> 2010 Population	<b>127,125</b> 2010 Population	<b>349,270</b> 2010 Population
<b>55,053</b> 2024 Population	<b>152,162</b> 2024 Population	<b>451,319</b> 2024 Population
<b>11.55%</b> 2010-2024 Population Growth	<b>19.69%</b> 2010-2024 Population Growth	<b>29.22%</b> 2010-2024 Population Growth
<b>0.33%</b> 2024-2029 (Annual) Est. Population Growth	<b>0.98%</b> 2024-2029 (Annual) Est. Population Growth	<b>1.65%</b> 2024-2029 (Annual) Est. Population Growth
<b>39.4</b> 2024 Median Age	<b>44.7</b> 2024 Median Age	<b>47.7</b> 2024 Median Age
<b>\$58,087</b> Average Household Income	<b>\$77,599</b> Average Household Income	<b>\$93,158</b> Average Household Income
<b>27.4%</b> Percentage with Associates Degree or Better	<b>35.6%</b> Percentage with Associates Degree or Better	<b>41.1%</b> Percentage with Associates Degree or Better
<b>48.1%</b> Percentage in White Collar Profession	<b>56.0%</b> Percentage in White Collar Profession	<b>58.3%</b> Percentage in White Collar Profession

940 S US Highway 1, Fort Pierce, Florida, 34950  
Ring: 5 mile radius



KEY SPENDING FACTS



Source: This infographic contains data provided by Esri (2024, 2029), Esri-Data Axle (2024), Esri-U.S. BLS (2024).  
© 2025 Esri  
Spending facts are average annual dollars per household

Population

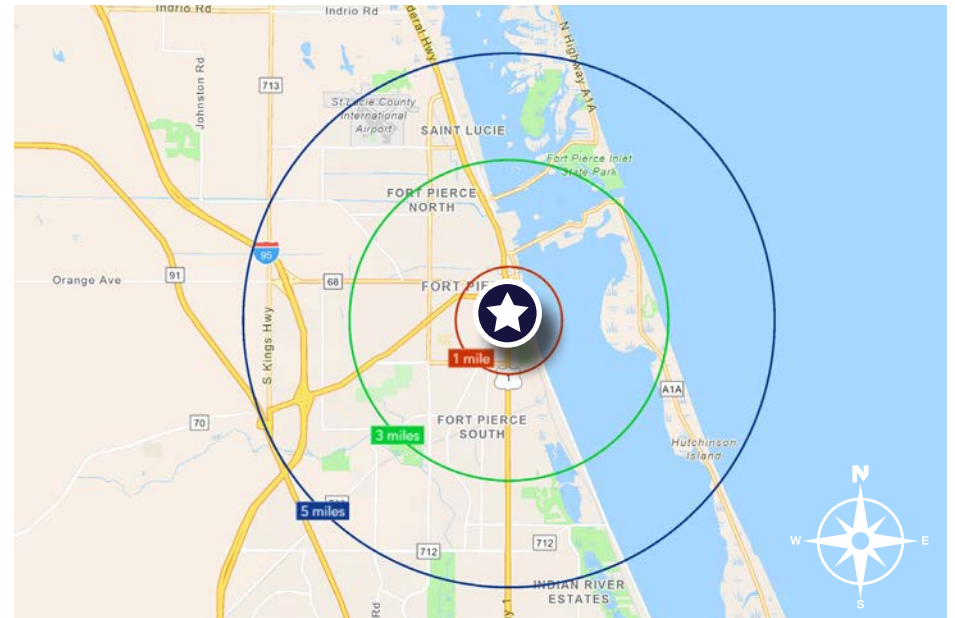
1 Mile:	7,019
3 Mile:	50,148
5 Mile:	70,259

Average Household Income

1 Mile:	\$52,550
3 Mile:	\$59,088
5 Mile:	\$64,619

Median Age

1 Mile:	39.3
3 Mile:	39.9
5 Mile:	40.7



## City of Ft. Pierce, Florida

Fort Pierce is famous for being a quaint fishing village, but take a closer look and you will find a treasure trove of activities. As one of the most diverse communities on the Treasure Coast, Fort Pierce has the cultural excitement to rival any “big city” atmosphere. With weekly and monthly events and premier shows at the Sunrise Theatre, visitors never run out of things to do or people to meet.

Fort Pierce is located on the pristine Indian River Lagoon with one of the best all-weather inlets in the state of Florida. Even though Fort Pierce is known for its world class fishing, some visitors would rather take an eco-friendly motorized kayak down the Indian River or dolphin watch on a tour boat. Paddle boarding and horseback riding on unspoiled beaches is also a hit among tourists. Fort Pierce’s natural beauty is world renowned.

Our cultural enhancements include the Zora Neale Hurston Trail, commemorating the noted author and anthropologist who lived her last years in Fort Pierce and the Highwaymen Heritage Trail. The Highwaymen, also referred to as the Florida Highwaymen, are 26 storied, world-renown African American landscape artists who originated in the City of Fort Pierce. Visitors from all over the United States visit Fort Pierce to experience the Highwaymen Heritage Trail, a self-guided engaging and educational experience that recognizes these mostly self-taught landscape artists who have strong local, state, national and international significance.

Museums in Fort Pierce include the newly-enlarged Florida landscape artist A.E. “Beanie” Backus museum and the St. Lucie Regional History Museum, with its satellite Adams Cobb Cultural Museum in the P.P. Cobb Building. Fort Pierce’s most popular tourist attraction, the National UDT Navy SEAL museum, commemorates the birth of the Navy frogmen here in Fort Pierce, and chronicles the evolution of this military unit to today’s Navy SEALs.

Fort Pierce City Marina is home to the Southern Kingfish Association’s National Championship Fishing Tournament every three years bringing 250-300 fishing teams to Downtown Fort Pierce. SKA has also committed to add Fort Pierce to the tournament’s Pro Tour schedule during the off years.

## St. Lucie County, Florida

Extensive, dependable transportation and easy access is the key to growth, and St. Lucie County has both in abundance. Interstate Highway 95 and U.S. Highway 1 provide easy access to the country's east coast, from Key West to Maine. The Florida Turnpike stretches from just south of Miami through northern-central Florida, while State Road 70 runs from U.S. Highway 1 in Fort Pierce west to Bradenton, Florida. St. Lucie County offers a plethora of transportation linkages which include rail, a custom-serviced international airport, and a deep-water port – all of which enable easy access to all St. Lucie County has to offer. The St. Lucie County International Airport is also one of the busiest general aviation airports in the state.

The county has a population of over 358,704 and has experienced growth of over 28% since 2010. The area economy is a blend of emerging life science R&D with traditional manufacturing, agriculture, tourism and services. St. Lucie County's natural resources are enviable, with more than 21 miles of pristine coastline and beaches, coral reefs, more than 20,000 acres of public parks and nature preserves, and miles of rivers and waterways. The area boasts over 20 public and semiprivate courses, with prices ranging from upscale to very affordable, and the great weather allows for play all year round. St. Lucie County is home to Clover Park in Port St. Lucie, the Spring training home of the New York Mets.

The county is host to Indian River State College, an institution that has won national recognition for excellence and innovation applied toward training and education. St. Lucie County boasts 52 schools with a total of 43,612 students and 8,800 staff. The Economic Development Council of St. Lucie County (EDC) is a non-profit organization with the goal of creating more, high-paying jobs for residents by working in concert on agreed upon strategies to promote the retention and expansion of existing businesses, as well as attracting new ones to St. Lucie County. Workers employed in St. Lucie County are clustered in the Health Care and Social Assistance (18.4%), and Retail Trade (11.9%) industries. Workers living in St. Lucie County are concentrated in the Health Care and Social Assistance (16.3%), and Retail Trade (14.1%) industries. Since 2017 the EDC has facilitated 40 expansion and new attraction job creating projects with a net growth of building area of approximately 6,500,000 square feet.



# ±3,920 SF 2-Story Commercial Building

940 S US Highway 1, Fort Pierce, FL 34950

FOR LEASE: \$12.00/SF NNN



## CONTACTS



**DOUG LEGLER**

Senior Director

Mobile: +1 772 405 7778

Office: +1 772 678 7606

[doug.legler@cushwake.com](mailto:doug.legler@cushwake.com)



**CASEY COMBS**

Director

Mobile: +1 772 285 8769

Office: +1 772 678 7611

[casey.combs@cushwake.com](mailto:casey.combs@cushwake.com)

©2026 Cushman & Wakefield. All rights reserved. The material in this presentation has been prepared solely for information purposes, and is strictly confidential. Any disclosure, use, copying or circulation of this presentation (or the information contained within it) is strictly prohibited, unless you have obtained Cushman & Wakefield's prior written consent. The views expressed in this presentation are the views of the author and do not necessarily reflect the views of Cushman & Wakefield. Neither this presentation nor any part of it shall form the basis of, or be relied upon in connection with any offer, or act as an inducement to enter into any contract or commitment whatsoever. NO REPRESENTATION OR WARRANTY IS GIVEN, EXPRESS OR IMPLIED, AS TO THE ACCURACY OF THE INFORMATION CONTAINED WITHIN THIS PRESENTATION, AND CUSHMAN & WAKEFIELD IS UNDER NO OBLIGATION TO SUBSEQUENTLY CORRECT IT IN THE EVENT OF ERRORS



**CUSHMAN &  
WAKEFIELD**