



COLEMAN CENTER

Premium Flex/Executive Office/Creative campus centrally located with immediate access to I-280, I-880, & Hwy 101

1650-1678 COLEMAN AVE, SANTA CLARA, CA 95050

±5,375 SF

SUITE 1650

±2,150 SF

SUITE 1660

±5,600 SF

SUITE 1678

±13,125 SF

TOTAL AVAILABLE SQUARE FEET



Property Highlights

Secure fenced campus with market-ready renovations and upgrades

10 minutes to downtown San Jose, and 10 minutes to Santa Clara Convention Center

Adjacent to Coleman Highline mixed use development and SJC International Airport

Less than 0.5mi from Santa Clara Police Department

Silicon Valley power savings up to 30% over PG&E

New glass roll-up doors throughout

Ample dedicated parking

AI/ Tech/ R&D user ideal

Flexible expansion opportunities

\$2.65 - 2.85 NNN

INTRODUCTORY ASKING RATE
COMPETITIVE OCCUPANCY COST

COLEMAN CENTER

LOCATED IN THE *HEART OF SILICON VALLEY, SANTA CLARA*

Coleman Center offers a rare, two-building premium flex campus designed for high-growth startups, executive offices, or established businesses seeking a private, secure footprint. The campus provides scalable suites from 2,150 to 5,600 SF. Located in the heart of the Silicon Valley, Coleman Center is steps from SJC, PayPal Park and the Coleman Highline, a world-class 1.7M SF mixed-use hub featuring major tech headquarters, over 1,500 luxury apartments, and full-service hotel.



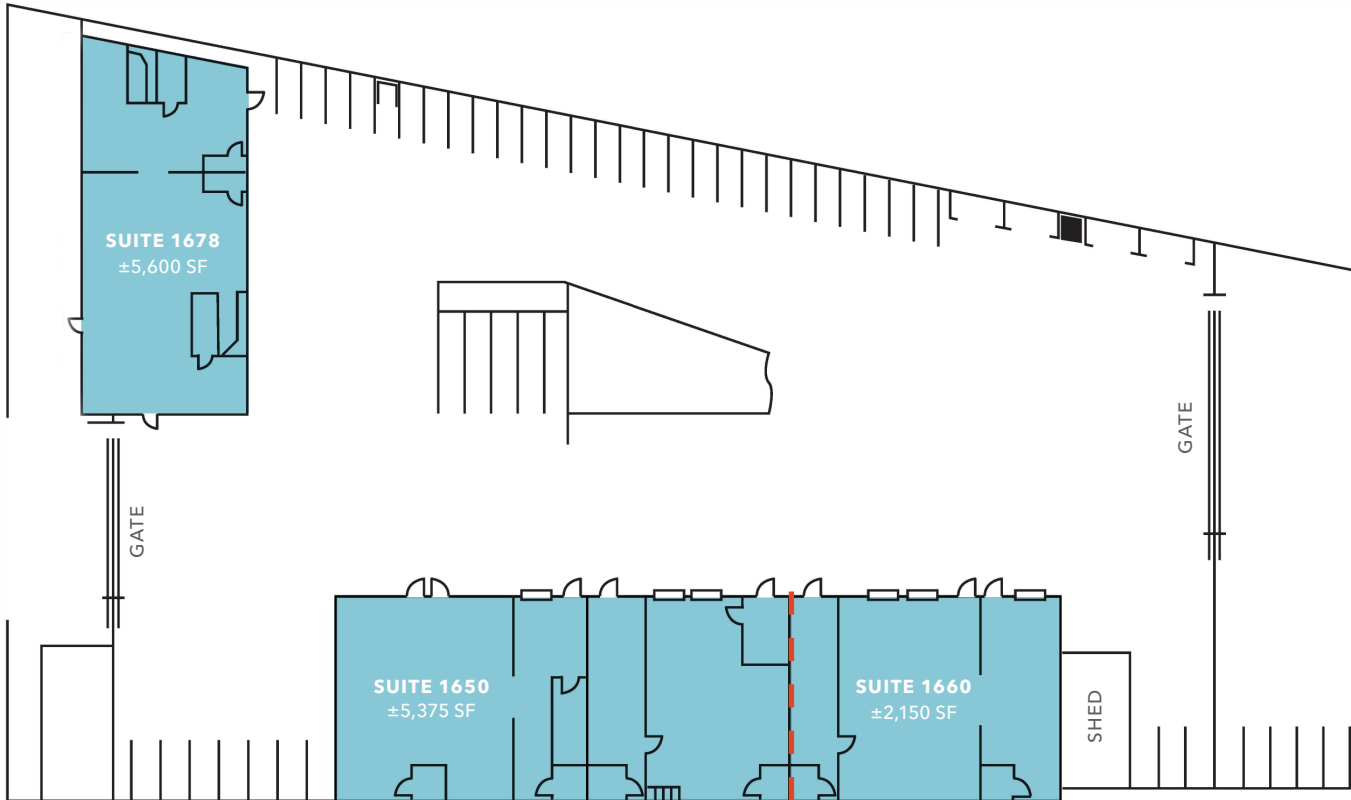
**SUBJECT
PROPERTY**

 **VIEW
VIDEO**

AVAILABLE FOR LEASE

KIDDER MATHEWS

SITE PLAN



FLOOR PLAN NOT TO SCALE

±7,525 SF

1650 COLEMAN AVE

±5,600 SF

1678 COLEMAN AVE

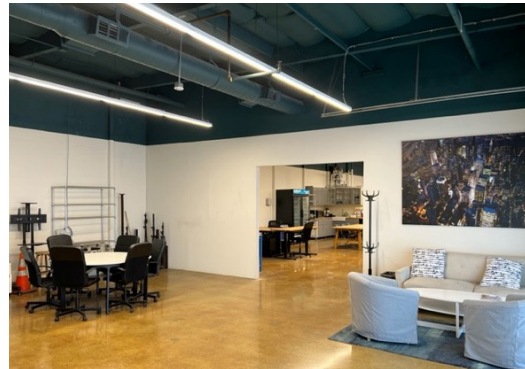
±2,150 SF

DIVISIBLE

FLEX

USE TYPE





SUITE 1650

PROPERTY HIGHLIGHTS

- Building and monument signage
- Modern 15' open ceiling environment
- New glass motorized roll-up doors
- LED lighting
- Open concept and break area/kitchen
- Plug and play
- HVAC

±5,375 SF
AVAILABLE



SUITE 1678

PROPERTY HIGHLIGHTS

- Freestanding 1-story building
- Highly visible monument and building signage
- Modern 15' open ceiling environment
- Contemporary LED lighting
- Sprinklered throughout
- Polished concrete floors throughout
- Glass roll-up capability
- Break room with kitchenette
- HVAC



±5,600 SF
AVAILABLE

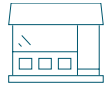
IDEAL USES



CREATIVE
STUDIO
SUITES



ROBOTICS LAB



SHOWROOM



LUXURY GYM/
PREMIUM
HEALTH CLUB



PERFORMANCE
TRAINING



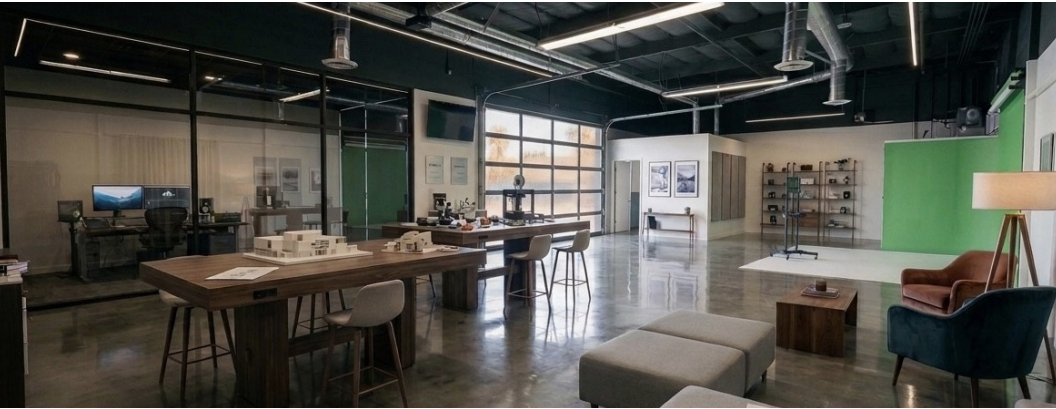
BOUTIQUE
FITNESS
STUDIO



EXECUTIVE
AUTO STORAGE
AND OFFICE



PRIVATE
WORKSPACE
SUITES





SUITE 1660

PROPERTY HIGHLIGHTS

- Building and monument signage
- Modern 15' open ceiling environment
- (2) new glass roll-up doors with state of the art motors
- LED lighting
- Open concept and break area/ kitchen
- HVAC
- Available immediately

±2,150 SF
AVAILABLE



DEMOGRAPHICS

POPULATION

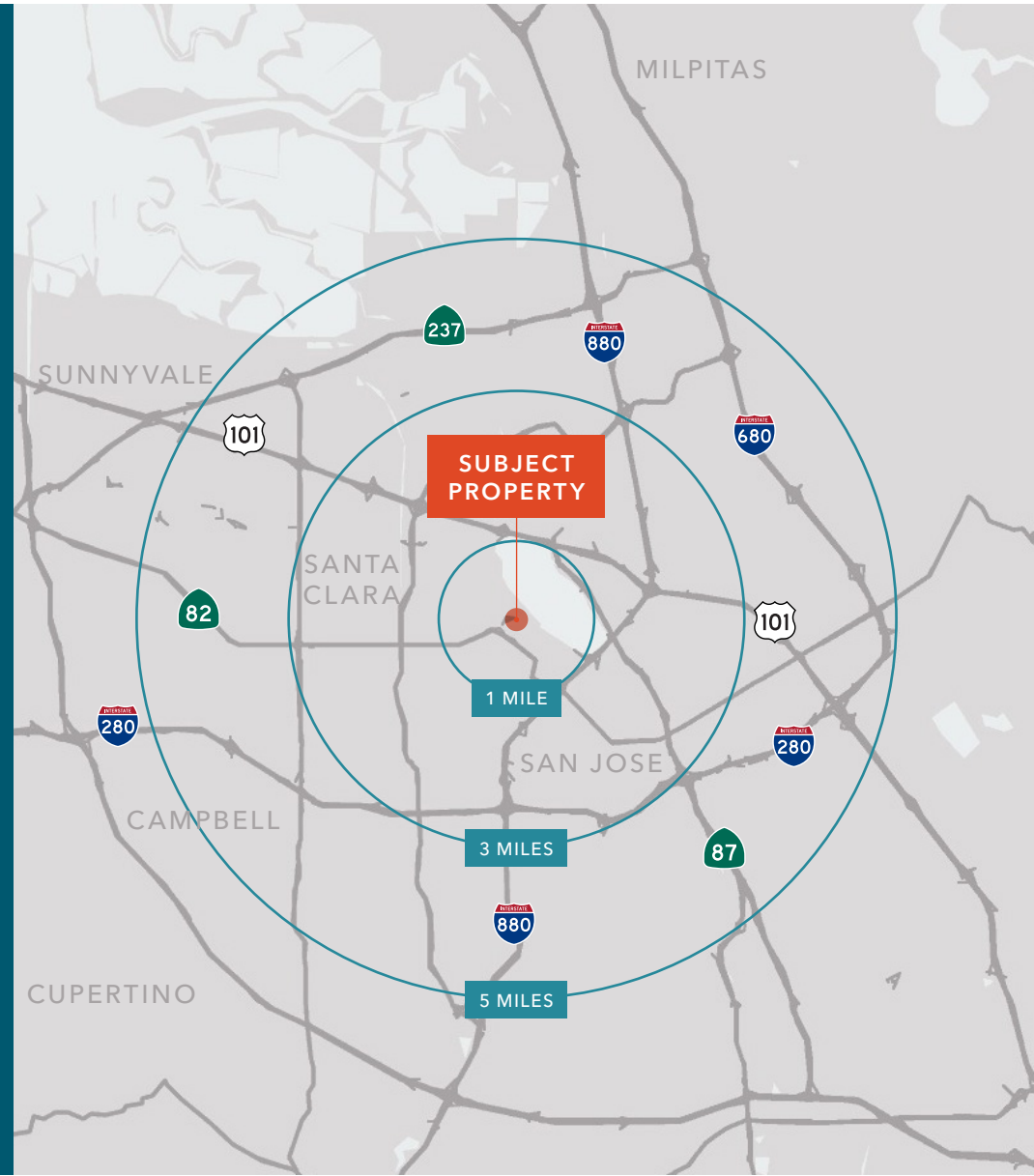
	1 Mile	3 Miles	5 Miles
2023 TOTAL POPULATION	13,343	170,902	621,433
2028 PROJECTED POPULATION	14,740	175,653	622,800
DAYTIME EMPLOYEES	20,796	224,039	463,990
BUSINESSES	1,080	14,104	32,024

HOUSEHOLDS

	1 Mile	3 Miles	5 Miles
2023 TOTAL HOUSEHOLDS	4,479	67,201	229,158
2028 PROJECTED HOUSEHOLDS	5,109	69,907	232,616

INCOME

	1 Mile	3 Miles	5 Miles
2023 AVERAGE HH INCOME	\$151,285	\$203,799	\$206,614
2028 PROJECTED AVERAGE	\$144,410	\$215,161	\$223,574
MEDIAN HH INCOME	\$142,361	\$170,435	\$172,131
2028 PROJECTED MEDIAN	\$149,879	\$176,257	\$178,521





COLEMAN CENTER

For more information on this property, please contact

RODNEY MORESCHINI
 408.588.2305
 rodney.moreschini@kidder.com
 LIC N° 01257858

KIDDER.COM

This information supplied herein is from sources we deem reliable. It is provided without any representation, warranty, or guarantee, expressed or implied as to its accuracy. Prospective Buyer or Tenant should conduct an independent investigation and verification of all matters deemed to be material, including, but not limited to, statements of income and expenses. Consult your attorney, accountant, or other professional advisor.

