

For Lease: Office

Lennard:



New
Pricing

1200 Markham Road &
2100 Ellesmere Road
Toronto, ON

Virtual Space
Planning



1200 Markham Road



Executive office units available for lease at the corner of Markham Road & Ellesmere Road in Toronto.



Available Space

Suite 200:	8,919 SF
Suite 218:	826 SF
Suite 219:	813 SF
Suite 300:	4,751 SF
Suite 319:	1,674 SF



Net Rent

Contact Listing Agents

Additional Rent

\$17.68 PSF (2025)



Availability

Immediate



Listing Agents

Marty Atkins**

Vice President
416.565.3455
matkins@lennard.com

David Ranson*

Vice President
416.729.7066
dranson@lennard.com

*Sales Representative **Broker

Property Highlights

- **Free covered and surface parking for both tenants and visitors**
- Established office location
- Access to public transit routes and Highway 401
- On-site property management
- Podium signage available on Markham Road
- On-site security
- Restaurants on-site
- Pharmacy, labs, x-rays, etc. on-site
- Space planning available will result in a Virtual Tour in 3D and full colour
- Very aggressive, market savvy Landlord

1200 Markham Road



Suite

200

Available Space (can be demised)

8,919 SF



Availability

Immediate

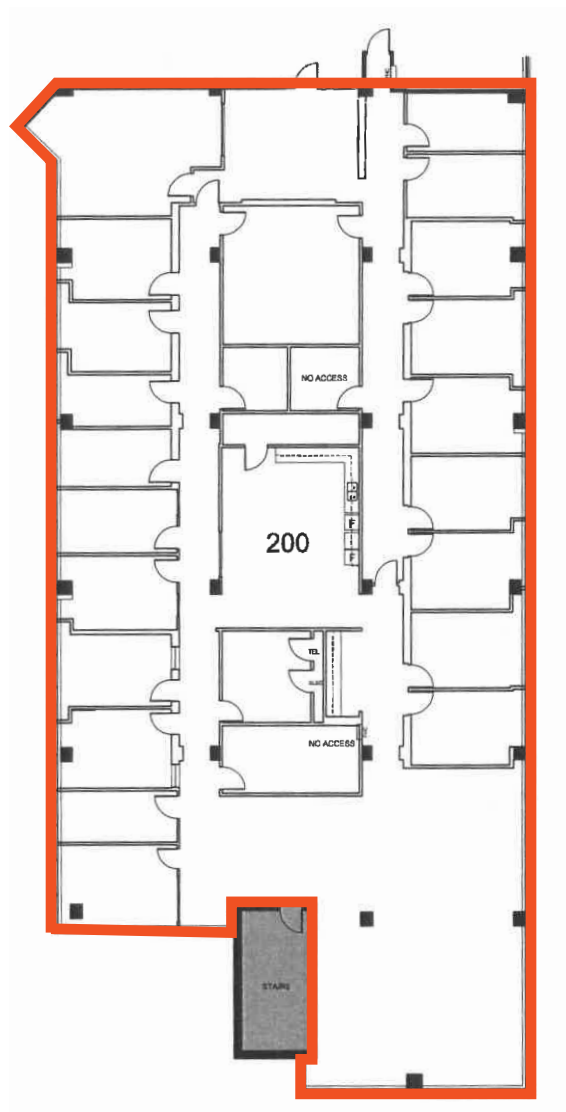


Net Rent

Contact Listing Agents

Additional Rent

\$17.68 PSF (2025)



1200 Markham Road



Suite

300

Available Space (can be demised)

4,751 SF



Availability

Immediate

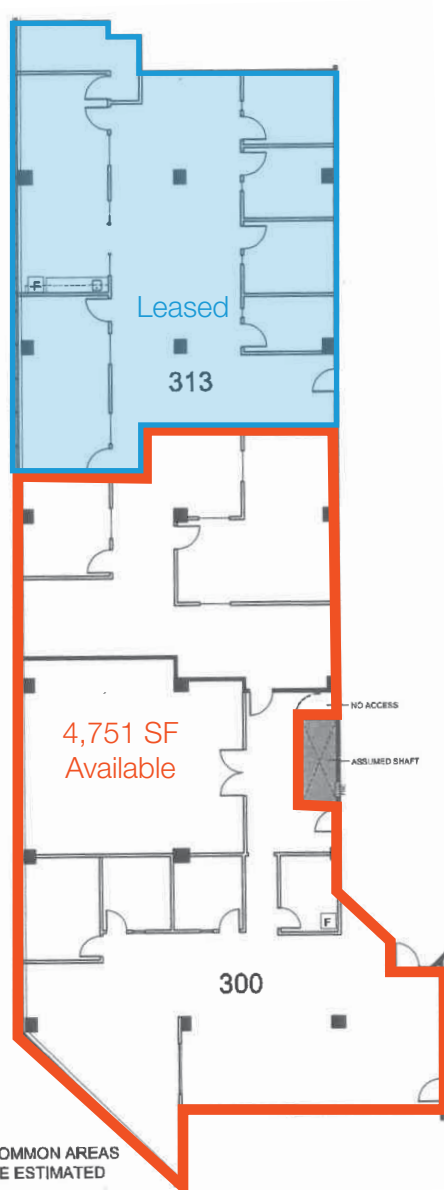


Net Rent

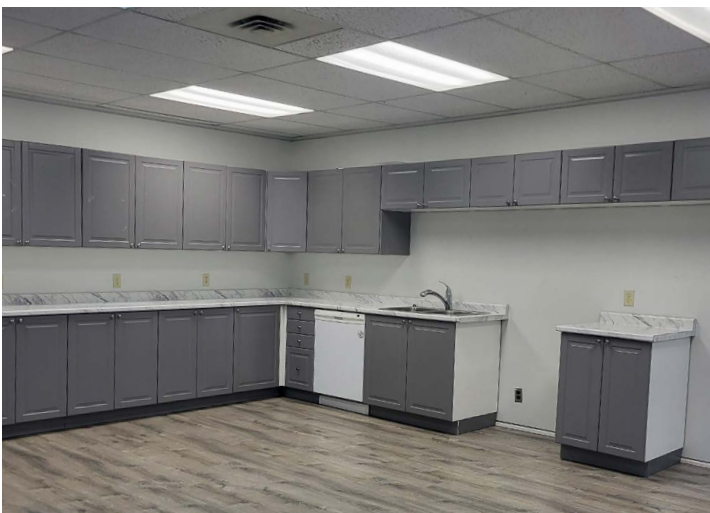
Contact Listing Agents

Additional Rent

\$17.68 PSF (2025)



1200 Markham Road



*A bright future
for your business
is right here.*

2100 Ellesmere Road



Executive office units available for lease at the corner of Markham Road & Ellesmere Road in Toronto.



Available Space

Suite 202:	801 SF
Suite 208:	1,320 SF
Suite 315:	909 SF
Suite 320:	2,515 SF
Suite 323:	626 SF
Suite 326:	2,910 SF
Suite 328:	1,471 SF



Net Rent

Contact Listing Agents

Additional Rent

\$18.84 PSF (2025)



Availability

Immediate



Listing Agents

Marty Atkins**

Vice President
416.565.3455
matkins@lennard.com

David Ranson*

Vice President
416.729.7066
dranson@lennard.com

*Sales Representative **Broker

Property Highlights

- **Free covered and surface parking for both tenants and visitors**
- Established office location
- Access to public transit routes and Highway 401
- On-site property management
- Podium signage available on Markham Road
- On-site security
- Restaurants on-site
- Pharmacy, labs, x-rays, etc. on-site
- Space planning available will result in a Virtual Tour in 3D and full colour
- Very aggressive, market savvy Landlord

2100 Ellesmere Road



*A bright future
for your business
is right here.*

Lennard:

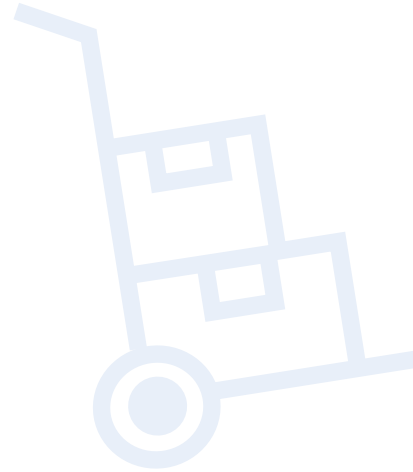
lennard.com

Need Extra Space?



Storage Rental

Room	Dimensions	Monthly Cost + HST
A	10' X 10'	\$250
E	17' X 9'	\$350
K	12' X 9'	\$300
P	9' X 8'	\$220
Q	7' X 10'	\$210
S	7' X 8'	\$200

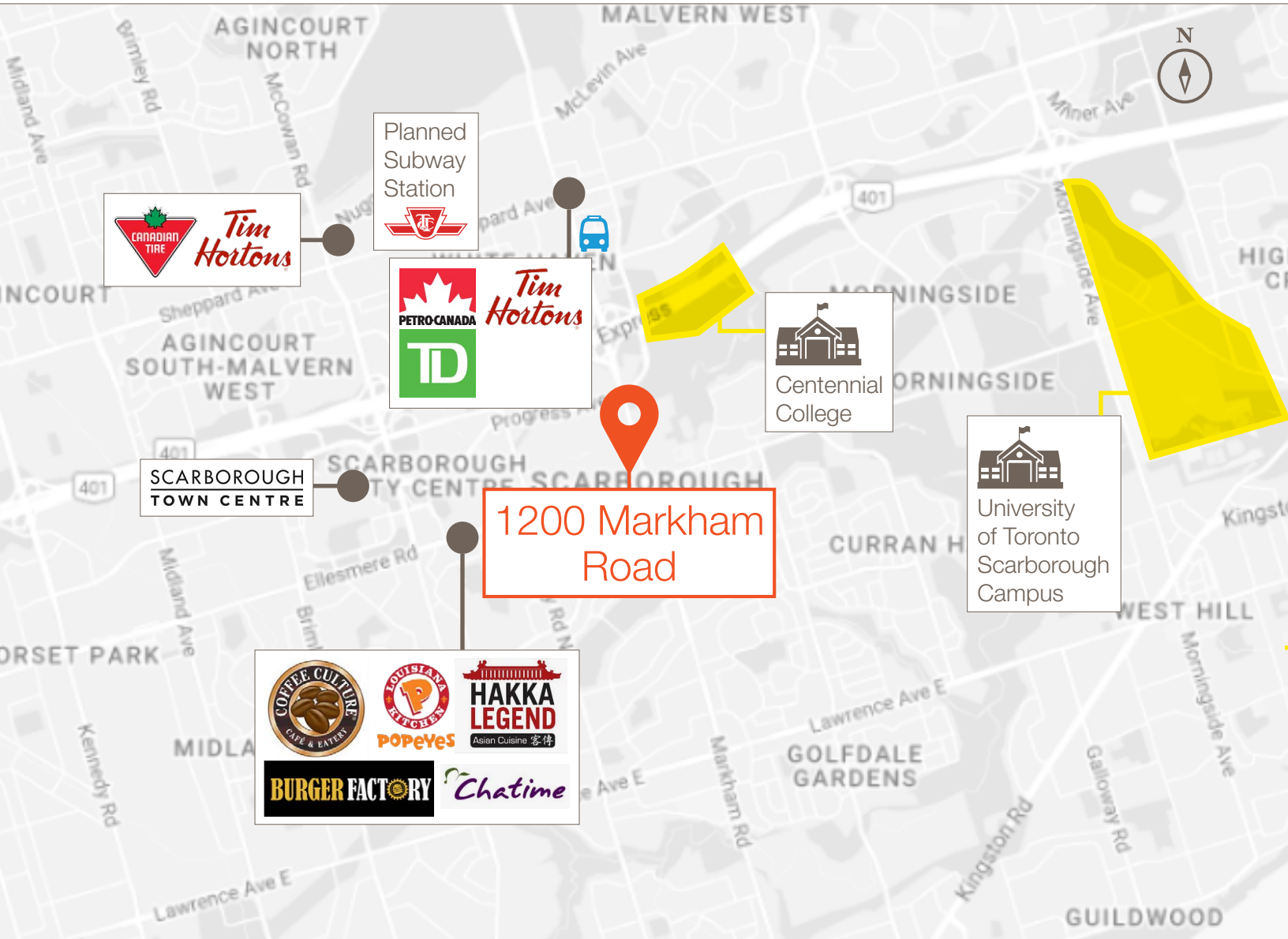


Daily Boardroom Rental

Full Day: \$150 plus HST

Half Day: \$75 plus HST

Nearby Amenities



testfit+

INNOVATION IN THE CONVENTIONAL TEST FIT

Bennett Design is thrilled to introduce Test Fit+, a game-changer in helping brokers and their clients make informed decisions.

What is Test Fit+?

Traditional test fits and feasibility studies often leave clients with just a single 2D floor plan to evaluate a potential office space. While functional, they don't always inspire confidence — or excitement.

Test Fit+ is an elevated test fit offering that generates:



3 Space Plan Options



1 Virtual Tour (3D, Full Colour)

This immersive experience helps clients better visualize their future office and makes the decision-making process more engaging and effective. It's not just a tool, it's a way to bring the vision of a new space to life.

Why Test Fit+?

- 1 Maximize comprehension of space potential
- 2 Offer more clarity in decision making
- 3 Create a faster path to Client approval

Experience an immersive experience of your space.

[View sample virtual tour](#)

video.wixstatic.com/video/5184b7_0972bc6d554d17bc6792006e7bc3911080/amp4file.mp4

We create intelligent design that fuels business, inspires people, and shapes a greener world.

Bennett Design Associates is an award-winning, full-service Interior Design firm offering strategic, creative and management services for corporate, model suite, retail, hospitality and institutional services across Canada.

We are thought leaders in the future of design and understand the importance of assisting your clients in the visualization of prospective spaces.

We're confident Test Fit+ will help you present your properties in a premium manner — minimizing showings and maximizing persuasive impact.

For more information on Test Fit+, please contact:

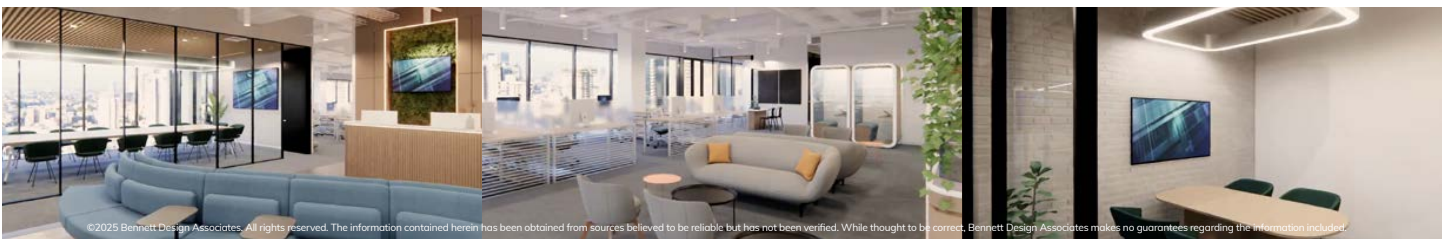
905.852.4617
TestFitPlus@bennettdesign.ca

bennettdesign.ca

10 Douglas Road
Uxbridge, Ontario
L9P 1S9



BENNETT



©2025 Bennett Design Associates. All rights reserved. The information contained herein has been obtained from sources believed to be reliable but has not been verified. While thought to be correct, Bennett Design Associates makes no guarantees regarding the information included.

Lennard:

Marty Atkins**, Vice President
416.565.3455
matkins@lennard.com

David Ranson*, Vice President
416.729.7066
dranson@lennard.com

201-60 Columbia Way, Markham
905.752.2220
lennard.com

*Sales Representative **Broker

Statements and information contained are based on the information furnished by principals and sources which we deem reliable but for which we can assume no responsibility. Lennard Commercial Realty, Brokerage.