

299

PARK AVE

NEWMARK

Entire 21st Floor – Brand New Sublease Opportunity





Floor / Area: Entire 21st Floor - 29,173 RSF

Sublease Term: April 2029

Possession: Immediate

Asking Rent: Upon Request

BUILDING FEATURES

Newly Renovated Lobby featuring a 60-foot LED interactive display

Upgraded Entrance & Plaza

Close Proximity to Grand Central

SPACE OVERVIEW

Recently built installation

Plug and Play space, delivered fully furnished & wired

Excellent light and views

Only full floor available in the building

LAYOUT FEATURES

62 Trading Desks

67 Workstations

5 Conference Rooms (1 for 16 people, 2 for 10 people, 2 for 6 people)

43 Windowed Offices; 4 Interior Offices

Pantry; 3 Coffee Bars

Reception Area

ENTIRE 21ST FLOOR | AS-BUILT PLAN

29,173 RSF

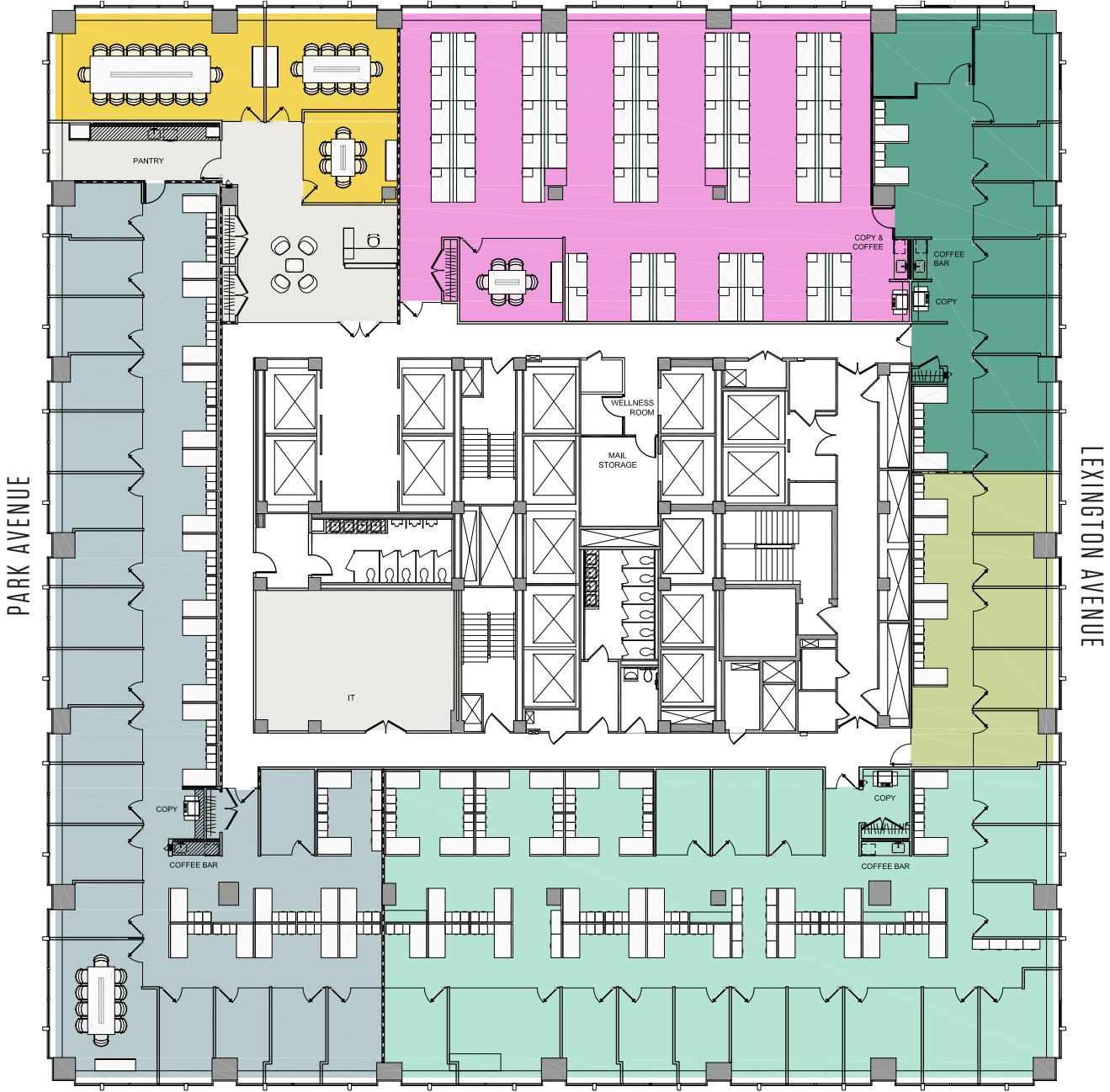


PHOTO GALLERY



PHOTO GALLERY



PHOTO GALLERY



CONTACT

JARED HOROWITZ

Vice Chairman
212-372-2022
jared.horowitz@nmrk.com

JUSTIN POLLNER

Managing Director
212-372-0780
justin.pollner@nmrk.com



The information contained herein has been obtained from sources deemed reliable but has not been verified and no guarantee, warranty or representation, either express or implied, is made with respect to such information. Terms of sale or lease and availability are subject to change or withdrawal without notice.

© Newmark. All Rights Reserved.

NEWMARK