

WRH BUILDING

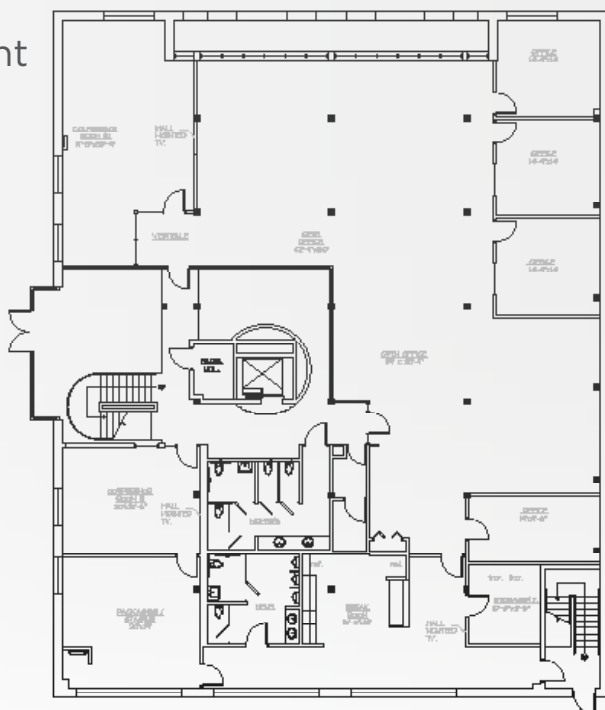
OFFICE SPACE FOR LEASE



100 THIRD STREET SOUTH
DOWNTOWN ST. PETE

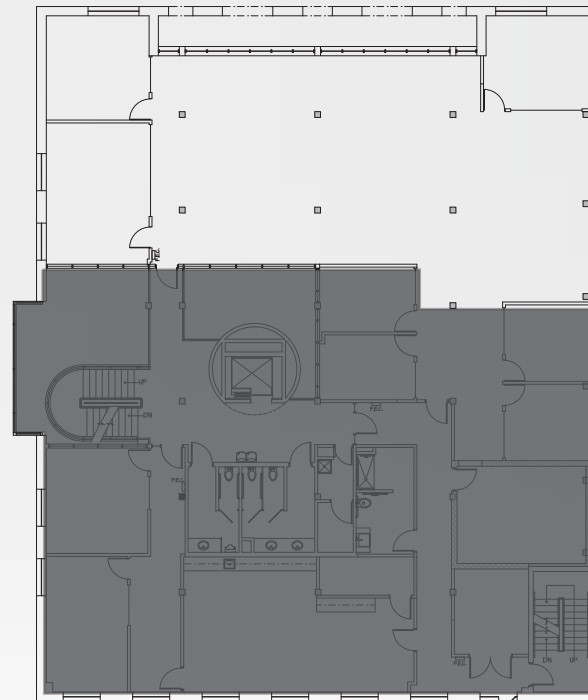
DETAILS MATTER

- 9,605 RSF available on contiguous floors
- Rate: \$42.00/SF, Full Service
- Rate includes the free use of all existing furniture, workstations, and kitchen equipment
- Flexible lease term
- Parking: 3/1000 parking ratio at standard garage rates



First Floor

- 6,473 RSF
- Four (4) private offices
- Large open workspace
- Large Training room
- Two (2) Conference rooms
- Break room
- Storage/IT closet
- Private bathrooms



Second Floor

- 3,132 RSF
- Fully furnished offices, conference room and workstations
- Two (2) private offices with glass
- Large conference room
- Large open area with workstations
- Views overlooking private courtyard and Central Avenue
- Shared 2nd floor common area restrooms

VIEW THE VIRTUAL TOURS



Click For Courtyard/
Lobby Virtual Tour



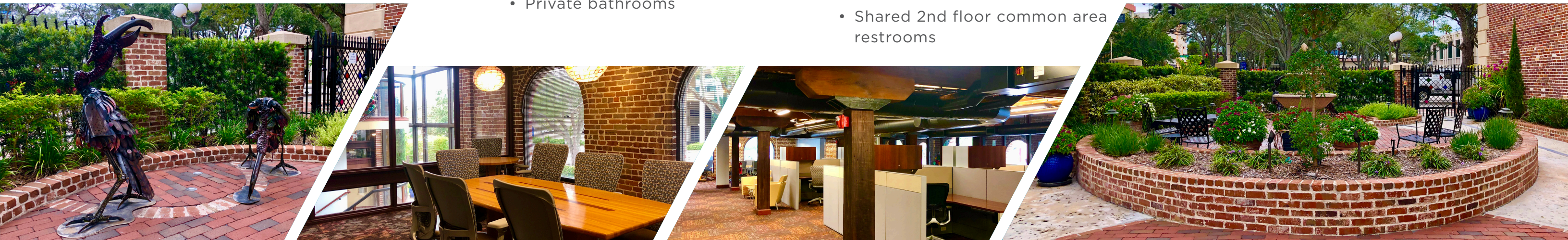
Click For First Floor
Virtual Tour



Click For Second
Floor Matteport Tour

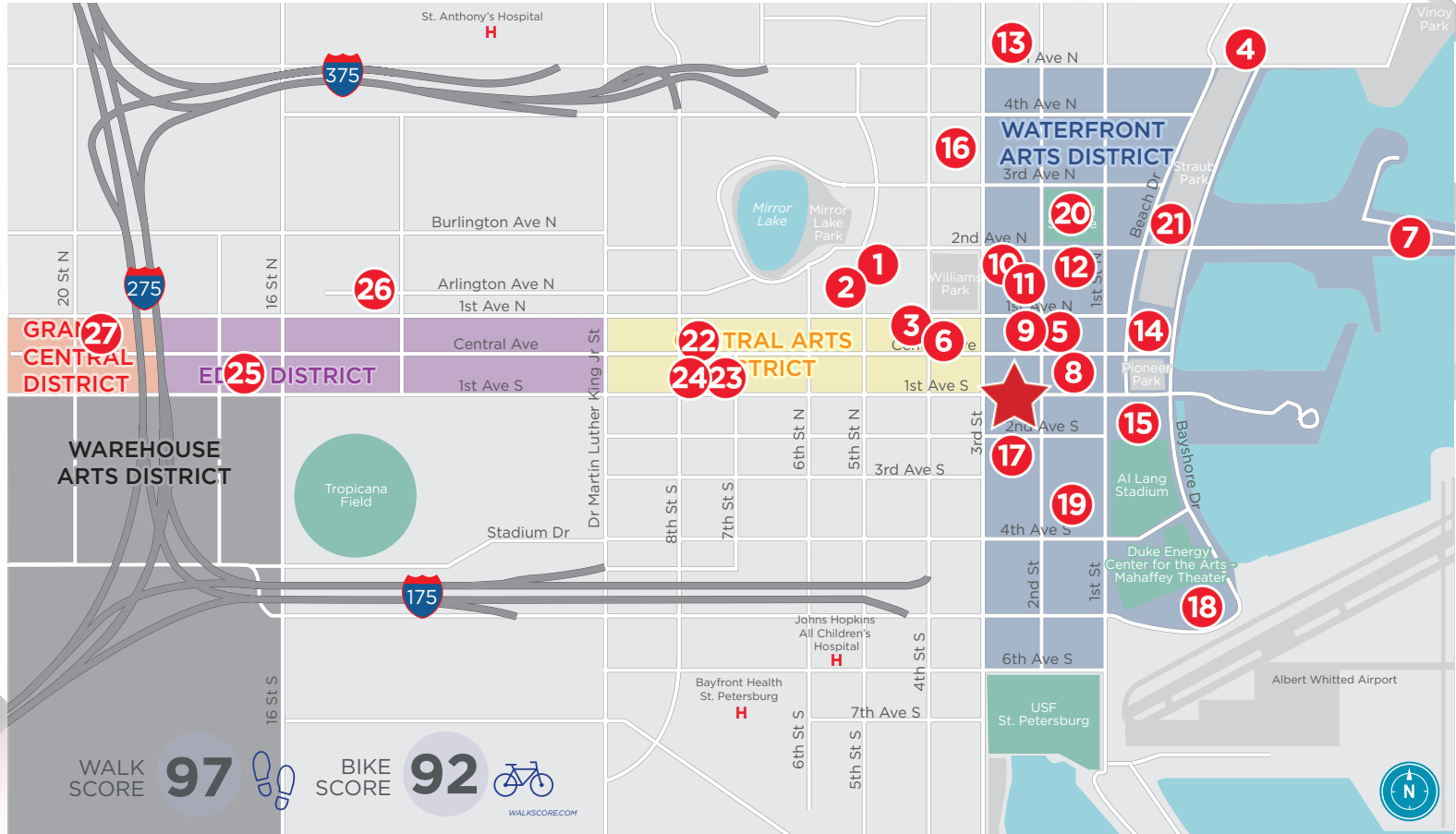
HISTORIC FEATURES MODERN UPGRADES

- Historically designated, three-story building built in 1917
- Former McNulty Rail Station renovated into a boutique office building
- Open ceilings, exposed wood beams and columns, and brick walls
- Dramatic arched windows
- Beautiful gated courtyard with seating areas, fountains, heavy landscaping, and custom art
- Glass art features throughout building
- Touchless entry and exit
- Upgraded LED lighting
- Highly upgraded restrooms
- Large break room in the first floor suite



CENTRALLY LOCATED WALKABLE AMENITIES

100 THIRD STREET SOUTH
IN THE HISTORIC MCNULTY STATION BLOCK WITH STATION HOUSE
CO-WORKING, RED MESA CANTINA & FORD'S GARAGE.



- | | | |
|--|-----------------------------------|--------------------------------|
| 1 City Hall | 10 American Stage | 19 Hilton |
| 2 County Courthouse | 11 St. Pete College | 20 Sundial/AMC Theaters |
| 3 US Post Office | 12 Chamber of Commerce | 21 Museum of Fine Arts |
| 4 Autograph Vinoy | 13 Palladium Theater | 22 Morean Arts Center |
| 5 Hyatt Place | 14 St. Pete Yacht Club | 23 Publix |
| 6 City Municipal Service Building | 15 Saturday Morning Market | 24 Chihuly Collection |
| 7 St. Pete Pier | 16 Museum of Arts & Crafts | 25 TRU by Hilton |
| 8 The James Museum | 17 Publix/CVS | 26 Police Department |
| 9 Jannus Landing | 18 Salvador Dali Museum | 27 Imagine Museum |

For more information, please contact:

Wendy Giffin
Executive Director
+1 727 599 3799
wendy.giffin@cushwake.com

©2026 Cushman & Wakefield. All rights reserved. The information contained in this communication is strictly confidential. This information has been obtained from sources believed to be reliable but has not been verified. NO WARRANTY OR REPRESENTATION, EXPRESS OR IMPLIED, IS MADE AS TO THE CONDITION OF THE PROPERTY (OR PROPERTIES) REFERENCED HEREIN OR AS TO THE ACCURACY OR COMPLETENESS OF THE INFORMATION CONTAINED HEREIN, AND SAME IS SUBMITTED SUBJECT TO ERRORS, OMISSIONS, CHANGE OF PRICE, RENTAL OR OTHER CONDITIONS, WITHDRAWAL WITHOUT NOTICE, AND TO ANY SPECIAL LISTING CONDITIONS IMPOSED BY THE PROPERTY OWNER(S). ANY PROJECTIONS, OPINIONS OR ESTIMATES ARE SUBJECT TO UNCERTAINTY AND DO NOT SIGNIFY CURRENT OR FUTURE PROPERTY PERFORMANCE.