

330 Atlantic Avenue

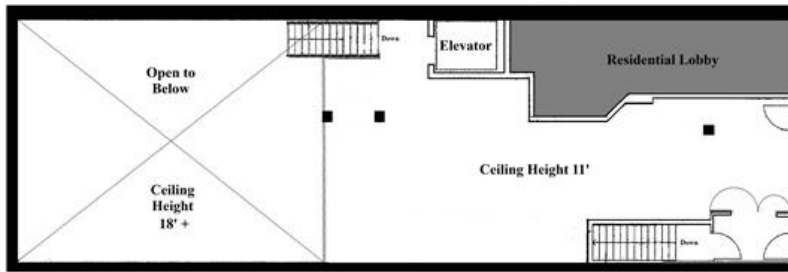
Brooklyn, New York

between Smith & Hoyt Streets

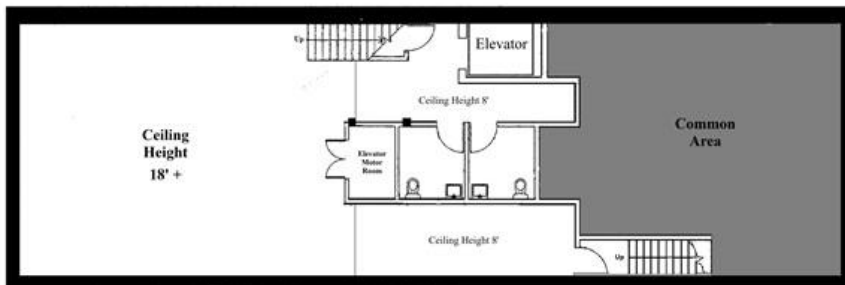


20' Frontage on high traffic Atlantic Avenue. Ground Floor ceiling height 11'
Lower Level 18' + ceiling height and four oversized skylights. Elevator.

Neighbors: Hilton Brooklyn, Nu Hotel, Brooklyn Ballet, PetSmart, Planet Fitness, Marshalls, VeraYoga, Refresh Massage, Otium Nails & Lashes, Absolute Coffee, Mile End Delicastessen, Fed Ex



FIRST FLOOR PLAN



CELLAR PLAN

Accuracy of square footage, dimensions, lot size, or other information concerning the property provided by seller or lessor or obtained from public records or other sources is not guaranteed.

Extraordinary Turnkey Retail Space



3,100 RSF +/- Total
1,265 RSF +/- Ground Floor
1,835 RSF +/- Lower Level

Price upon Request



Tom Currier
Currier Real Estate
917.699.2802

tom@currierrealestate.com