



COURTHILL

H O U S E

WATER LANE | WILMSLOW | SK9 5AP



DESCRIPTION

Courthill House is a prominently located office building ideally situated in the heart of Wilmslow town centre fronting Water Lane. The building has fantastic amenities and transport on its doorstep, including Gail's Bakery, Smoke and Hotel Chocolat.

The second-floor space is currently under refurbishment with the common area to follow. This will deliver a warm, welcoming environment.



AT THE CORE OF WILMSLOW



SPECIFICATIONS



REFURBISHMENT
COMING SOON



CENTRAL
LOCATION



ON-SITE
PARKING



24-HOUR
ACCESS



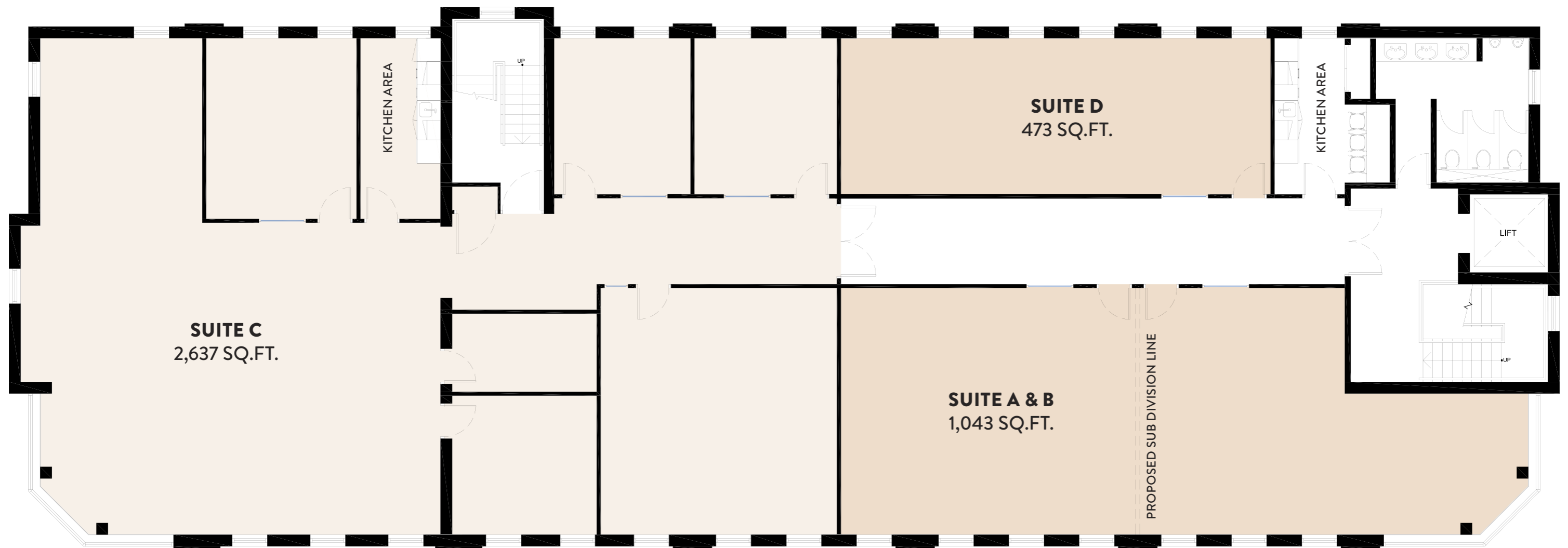
CCTV
SECURITY



OPEN PLAN
FLOOR PLATES

FLEXIBLE FOR YOUR NEEDS

SECOND FLOOR





WALKING

- Courthill House**
- Gail's Bakery
1 Min
- Juniper
2 Mins
- Stolen Lamb
3 Mins
- Rex Cinema
4 Mins
- Tesco/Post Office
5 Mins
- Cibo
6 Mins
- Waitrose
7 Mins
- Leisure Centre
8 Mins
- Wilmslow Train Station
9 Mins

10 MINS

DRIVING

- Courthill House**
- A34
2 Mins
- A555
5 Mins
- Manchester Airport
10 Mins
- M60
12 Mins
- M56
13 Mins
- Manchester City Centre
25 Mins
- M6
28 Mins
- Chester
50 Mins
- Liverpool
1 Hour

1 HOUR

TRAIN

- Wilmslow**
- Alderley Edge
3 Mins
- Chelford
7 Mins
- Cheadle Hulme
7 Mins
- Manchester Airport
8 Mins
- Stockport
13 Mins
- Manchester Piccadilly
27 Mins
- Crewe
28 Mins
- Stafford
40 Mins
- London Euston
1 Hour 55 Mins

2 HOURS

WILMSLOW



COURTHILL

H O U S E

WATER LANE | WILMSLOW | SK9 5AP

Orbit
Developments
01625 588200
orbit-developments.co.uk

Images are for illustrative purposes only and may not represent the exact office space available.

Developer reserves the right to change the scheme in the future. However, the Vendors / Lessors and Agents of intended as a general outline only, for the guidance of prospective purchasers or tenants, and do not constitute the whole or any part of an offer or contract. (2) They cannot guarantee the accuracy of any description, dimension or other details contained in these Particulars and prospective purchasers or tenants should not rely on them as statements of fact or representation, but must satisfy themselves as to the accuracy of such details. (3) No employee of the Agents has any authority to make or give any representation or warranty, or enter into any contract whatsoever in relation to the property (0326)