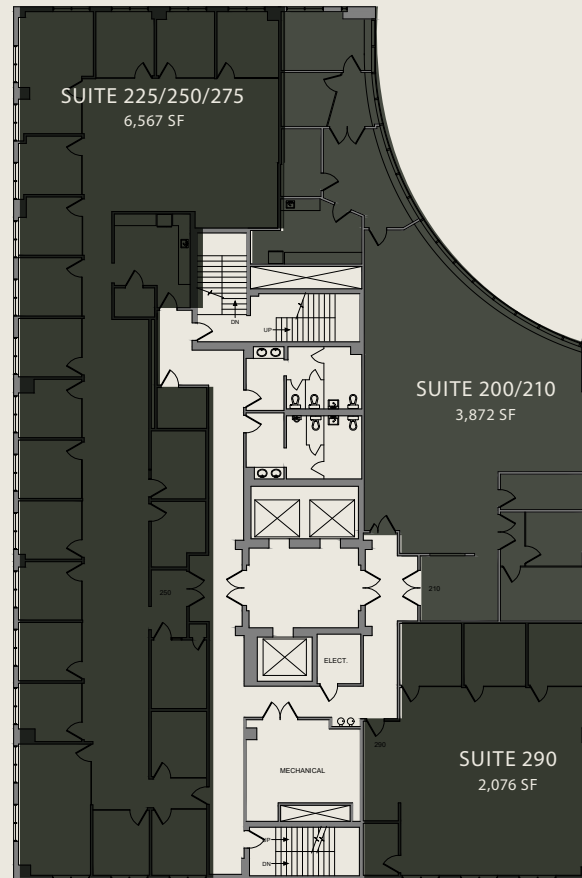


Bldg 925  
South Federal Hwy



2ND FLOOR

Available:

FULL FLOOR: 12,515 SF

SUITE 225/250/275: 6,567 SF

SUITE 200/210: 3,872 SF

SUITE 290: 2,076 SF

For more information contact:

**John Criddle**

Executive Vice President

+1 561 283 5176

john.criddle@cbre.com

**Joe Freitas**

Senior Vice President

+1 561 512 8844

joe.freitas@cbre.com

**Maxwell Pawk**

Vice President

+1 561 393 1670

max.pawk@cbre.com

**Nicholas Mulligan**

Associate

+1 561 393 1680

nicholas.mulligan@cbre.com

