

# 20 EAST 46<sup>TH</sup> STREET

Medical Office Space

**re** | solution  
REAL ESTATE



## Space Features

### Suite 600

- 5,364 RSF
- 2<sup>nd</sup> Generation built orthopedic / PT office
- Large PT space with gym flooring
- PT space has separate entrance
- TI and Free rent available
- Exam rooms have sinks
- Private bathroom

### Suite 402

- 1,749 RSF
- Raw space
- Can accommodate as many as five exam / consultation rooms
- Water access in the space
- TI and Free rent available

Jeffrey Zund  
Executive Director / Leasing  
212.519.2032  
[jzund@rreny.com](mailto:jzund@rreny.com)

Michael Adler  
Director/Leasing  
212.519.2046  
[madler@rreny.com](mailto:madler@rreny.com)

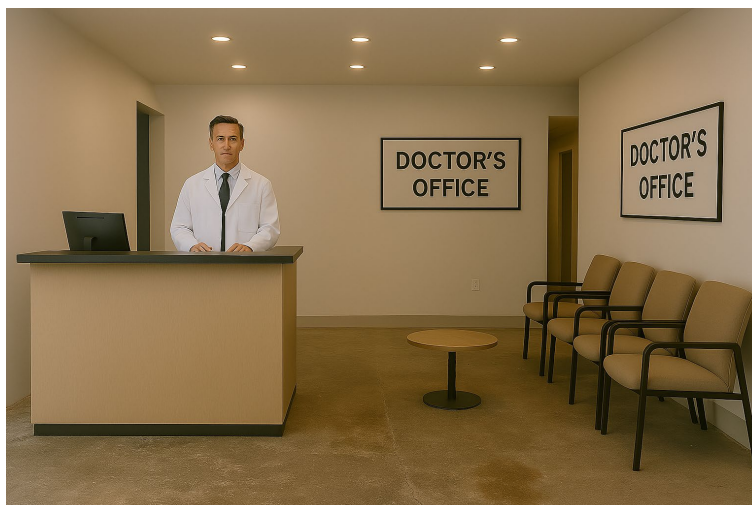
Although all information furnished regarding property for sale, rental, or financing is from sources deemed reliable, such information has not been verified and no express representation is made, nor is any to be implied as to the accuracy thereof, and it is submitted subject to errors, omissions, change of price, rental or other conditions, prior sale, lease or financing, or withdrawal without notice

# 20 EAST 46<sup>TH</sup> STREET

Medical Office Space

**re** | solution  
REAL ESTATE

**Suite 402 | 1,749 RSF**



Note: Rendering for illustrative purposes

Jeffrey Zund  
Executive Director / Leasing  
212.519.2032  
[jzund@rreny.com](mailto:jzund@rreny.com)

Michael Adler  
Director/Leasing  
212.519.2046  
[madler@rreny.com](mailto:madler@rreny.com)

Although all information furnished regarding property for sale, rental, or financing is from sources deemed reliable, such information has not been verified and no express representation is made, nor is any to be implied as to the accuracy thereof, and it is submitted subject to errors, omissions, change of price, rental or other conditions, prior sale, lease or financing, or withdrawal without notice

# 20 EAST 46<sup>TH</sup> STREET

Medical Office Space

**re** | solution  
REAL ESTATE

Suite 600 | 5,364 RSF



Note: Rendering for illustrative purposes

Jeffrey Zund  
Executive Director / Leasing  
212.519.2032  
[jzund@rreny.com](mailto:jzund@rreny.com)

Michael Adler  
Director/Leasing  
212.519.2046  
[madler@rreny.com](mailto:madler@rreny.com)

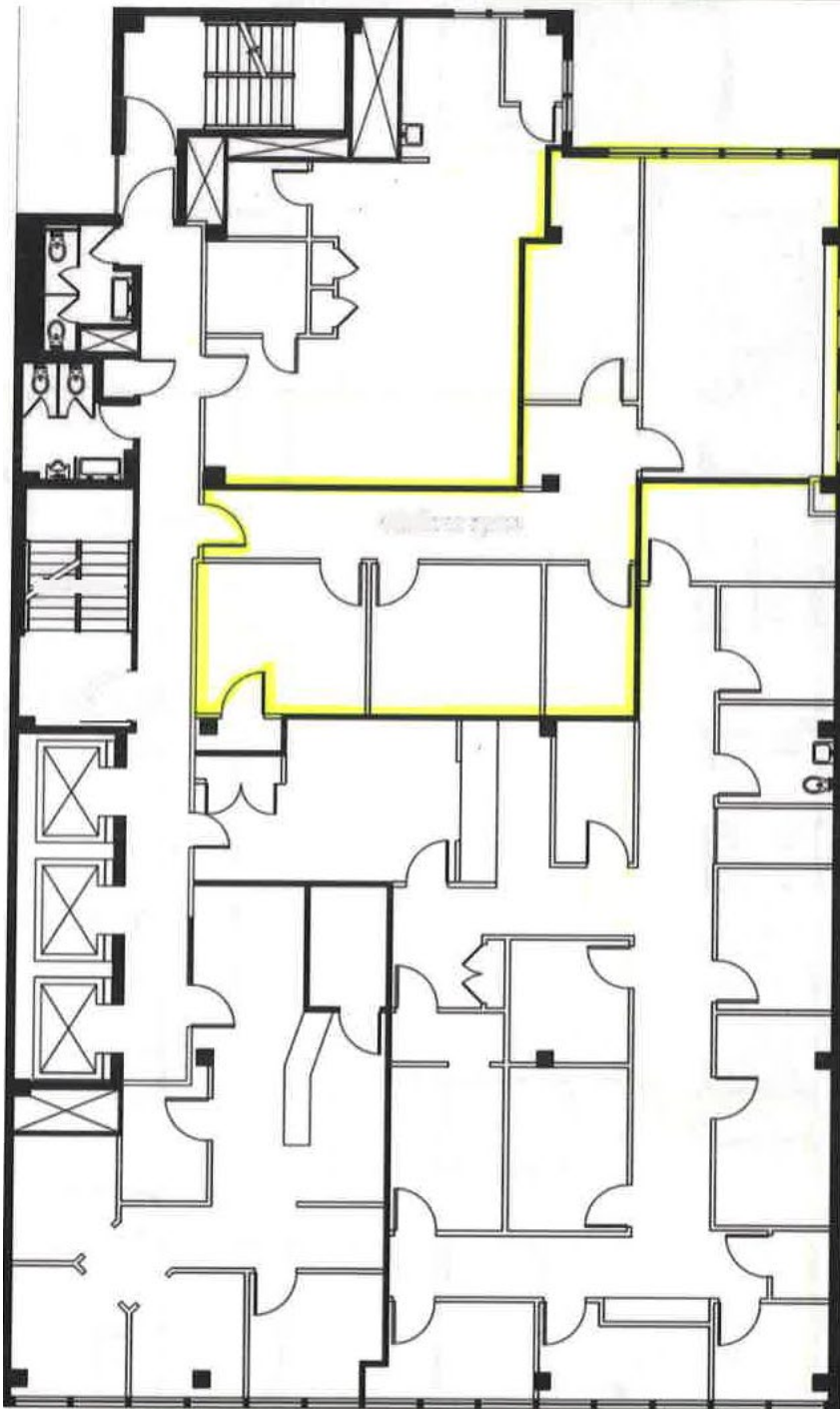
Although all information furnished regarding property for sale, rental, or financing is from sources deemed reliable, such information has not been verified and no express representation is made, nor is any to be implied as to the accuracy thereof, and it is submitted subject to errors, omissions, change of price, rental or other conditions, prior sale, lease or financing, or withdrawal without notice

# 20 EAST 46<sup>TH</sup> STREET

Medical Office Space

**re** | solution  
REAL ESTATE

20 East 46<sup>th</sup>  
Street – 4<sup>th</sup> Floor



Jeffrey Zund  
Executive Director / Leasing  
212.519.2032  
[jzund@rreny.com](mailto:jzund@rreny.com)

Michael Adler  
Director/Leasing  
212.519.2046  
[madler@rreny.com](mailto:madler@rreny.com)

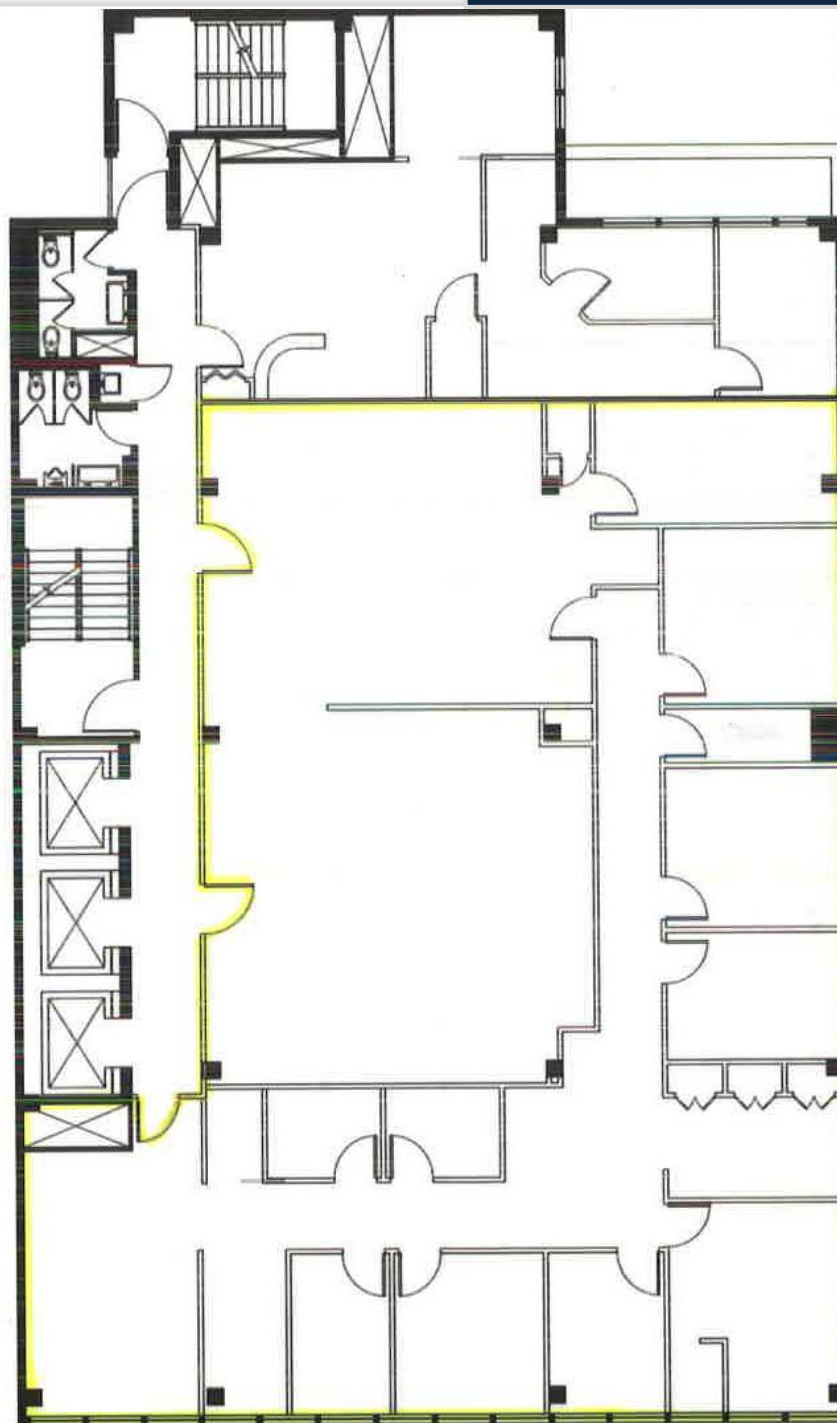
Although all information furnished regarding property for sale, rental, or financing is from sources deemed reliable, such information has not been verified and no express representation is made, nor is any to be implied as to the accuracy thereof, and it is submitted subject to errors, omissions, change of price, rental or other conditions, prior sale, lease or financing, or withdrawal without notice

# 20 EAST 46<sup>TH</sup> STREET

Medical Office Space

**re** | solution  
REAL ESTATE

20 East 46<sup>th</sup>  
Street – 6<sup>th</sup> Floor



Jeffrey Zund  
Executive Director / Leasing  
212.519.2032  
[jzund@rreny.com](mailto:jzund@rreny.com)

Michael Adler  
Director/Leasing  
212.519.2046  
[madler@rreny.com](mailto:madler@rreny.com)

Although all information furnished regarding property for sale, rental, or financing is from sources deemed reliable, such information has not been verified and no express representation is made, nor is any to be implied as to the accuracy thereof, and it is submitted subject to errors, omissions, change of price, rental or other conditions, prior sale, lease or financing, or withdrawal without notice