

Available
Office Space
in
Stone Haven

10602
Trademark
Parkway
Suite
507
&
508

FOR LEASING
INFORMATION
CONTACT:

Carol D. Plowman
BRE License # 00849369
909-373-2905

Danielle Parker
BRE License # 01927503
909-373-2906

3535 Inland Empire Blvd
Ontario, CA 91764



Corporate ID# 00976995

STONE HAVEN BUSINESS PARK

10600 - 10608 Trademark Parkway
Rancho Cucamonga, CA 91730



Great Business Park Environment:

- Multi-Tenant Office / Flex Spaces
- Building and Monument Signs Available
- Move-In Ready Suites
- Up to 4:1,000 Parking on Select Units
- Easy Access to Interstate 10 and 15 Freeways
- Near LA-Ontario International Airport, Ontario Mills Mall, and Victoria Gardens



STONE HAVEN BUSINESS PARK

Available
Office Space
in
Stone Haven
Business Park
10602
Trademark
Parkway

FOR LEASING
INFORMATION
CONTACT:

**LEE &
ASSOCIATES**
COMMERCIAL REAL ESTATE SERVICES

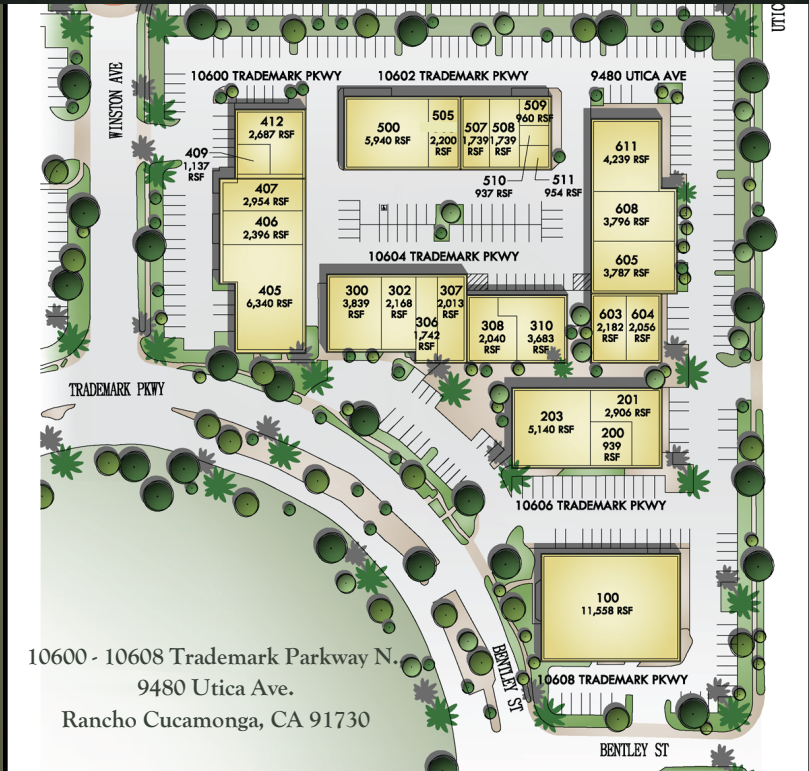
Corporate ID# 00976995

Carol D. Plowman
BRE License # 00849369
909-373-2905

Danielle Parker
BRE License # 01927503
909-373-2906

3535 Inland Empire Blvd
Ontario, CA 91764

CIP REAL ESTATE



AVAILABILITIES:

STREET ADDRESS	SUITE	±SF	RATE / SF	AVAILABILITY
10602 Trademark Pkwy	507	1,739	\$1.65	Immediate
10602 Trademark Pkwy	508	1,739	\$1.65	Immediate

Lease Term: 1 – 5 Years
 Tenant Improvements: Negotiable
 CAM Fee: \$0.13 / SF

STONE HAVEN BUSINESS PARK

10602
Trademark
Parkway
Suite #507

FOR LEASING
INFORMATION
CONTACT:

 **LEE &
ASSOCIATES**
COMMERCIAL REAL ESTATE SERVICES

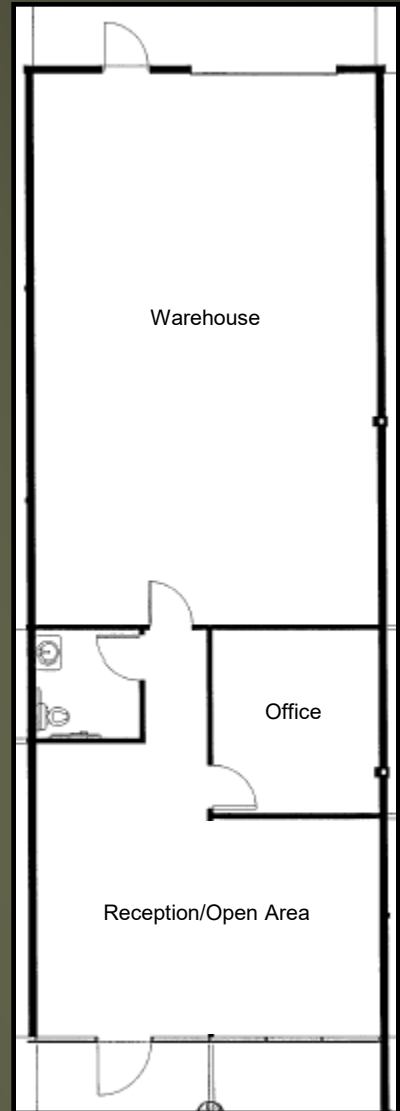
Corporate ID# 00976995

Carol D. Plowman
BRE License # 00849369
909-373-2905

Danielle Parker
BRE License # 01927503
909-373-2906

3535 Inland Empire Blvd
Ontario, CA 91764

 **CIP REAL ESTATE**

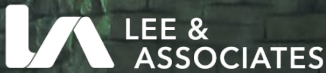


Suite 507
± 1,739 SF

STONE HAVEN BUSINESS PARK

10602
Trademark
Parkway
Suite #508

FOR LEASING
INFORMATION
CONTACT:



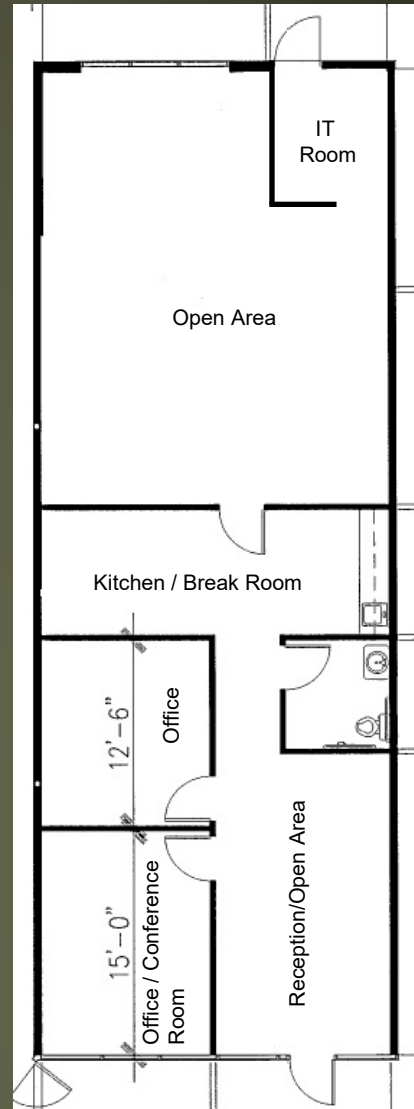
COMMERCIAL REAL ESTATE SERVICES

Corporate ID# 00976995

Carol D. Plowman
BRE License # 00849369
909-373-2905

Danielle Parker
BRE License # 01927503
909-373-2906

3535 Inland Empire Blvd
Ontario, CA 91764



Suite 508
± 1,739 SF